

# System Requirements

## CUNA CPDOnline System Requirements Health Check

To ensure your pc has met all necessary system requirements, click on the link below to run a health check:

[http://www.cuna.org/training/lms/lms\\_health\\_check.php](http://www.cuna.org/training/lms/lms_health_check.php)

**Note:** If you receive all green checks, you can assume your pc fully meets the systems requirement. For other results, read below for related system requirements.

### Hardware Requirements

Windows	MAC OS X
·Intel Pentium 333 MHz processor or equivalent	·PowerPC G4 1.25 GHz processor
·128 MB RAM	·512 MB SDRAM
·Video graphics adapter - 1024x768 screen resolution or higher (compatible with 8-bit color)	·Video graphics adapter - 1024X768 screen resolution; 32-bit color setting

### Operating System Requirements

Operating Systems	Browsers Supported
· <b>Microsoft Windows 7</b>	·Internet Explorer 8.0 * ·Firefox 3.6.10 (Learner/Manager Modes only)
· <b>Microsoft Windows XP (SP2/SP3)</b>	·Internet Explorer 6.0 ·Internet Explorer 7.0 ·Internet Explorer 8.0 * ·Firefox 3.6.10 (Learner/Manager Modes only)
· <b>Microsoft Vista SP2</b>	·Internet Explorer 7.0 ·Internet Explorer 8.0 * ·Firefox 3.6.10 (Learner/Manager Modes only)
· <b>Mac OS X (10.4.11)</b>	·Firefox 3.6.10 (Learner/Manager Modes only) ·Safari 4.0 (Learner/Manager Modes only)

\*Note: After thorough testing by SumTotal, there are no known issues using Internet Explorer 9.0 (IE 9) at this time. Full support of IE 9 will come shortly after our upgrade.

# System Requirements

## Web Plug-ins

To take full advantage of the sound, animation and graphics included in the courses, we ask that you download the following free web plug-ins. Some of these may already be located on your computer. You may download them yourself, or you may prefer to have your IT/IS department assist you with this.



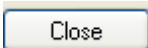
- Adobe PDF Reader: <http://www.adobe.com/products/acrobat/readstep2.html>
- Adobe Flash Player Version 8.0.24 or higher: <http://get.adobe.com/flashplayer/>

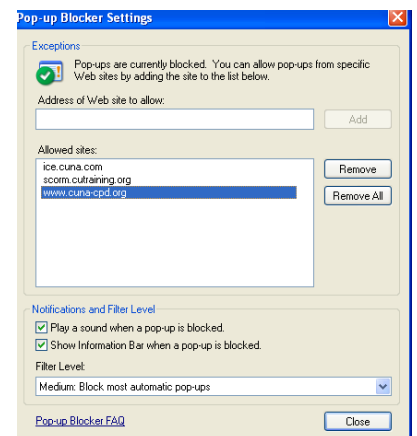
## Java Applet Requirements

Java build 1.4.2\_03 or above must be installed on your pc (NOTE: Java Version 1.5.0\_0, 1.6.0\_0 and 1.6.0\_18 have known issues and should be avoided)

- **Current Java Applet** - Please check with your IT department for assistance; they can determine if your computer has this software installed. If your computer does not have this software installed, please click on the link below to install:  
<http://java.com/en/download/index.jsp>
- **Previous Java Versions**- To obtain previous versions of Java, please click on this link and select the desired version under the Java 2 Platform Standard Edition (J2SE) heading:  
<http://java.sun.com/products/archive>

## Disable Pop-up Blockers for the CPDOnline Website:

1. Open Internet Explorer.
2. On the **Tools** menu, click **Pop-up Blocker**.
3. Click the **Pop-up Blocker Settings**.
4. In the **Address of Web site to allow** box, type the following address: <https://www.cuna-cpd.org>.
5. Click on .
6. In the **Address of Web site to allow** box, type the following address: <http://scorm.cutraining.org>.
7. Click on .
8. In the **Address of Web site to allow** box, type the following address: <http://lmsapps.cuna.org>
9. Click on  > Click on .

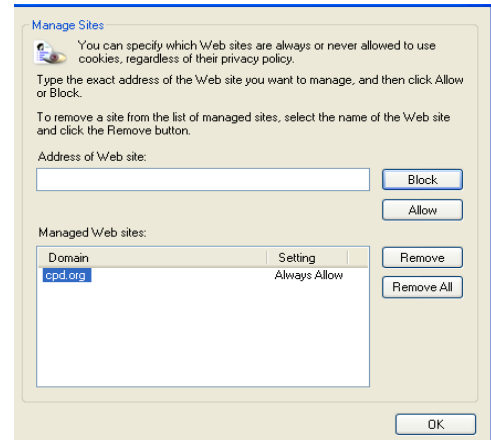


**Note:** On occasion computers can have additional pop-up blockers installed in search toolbars and other free downloads, for information on disabling pop-up blocker for these tools, click on this link: [http://www.hotcomm.com/faq/faq\\_popups.asp](http://www.hotcomm.com/faq/faq_popups.asp)

# System Requirements

## Enable Cookies for the CPDOnline Website:

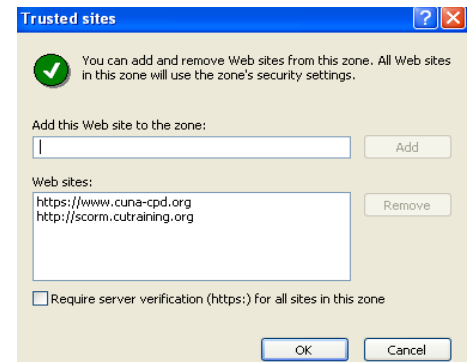
1. Open Internet Explorer.
2. On the **Tools** menu, click **Internet Options**.
3. Click the **Privacy** tab and then click **Sites...**
4. In **Address of Web site** field, type the following address: <https://www.cuna-cpd.org>.
5. To specify that you want Internet Explorer to always allow cookies from the specified Web site to be saved on your computer, click **Allow**.
6. Click **OK**.



## Enable Trusted Sites for the CPDOnline Website: (This step is a recommendation, though not a requirement).

1. Open Internet Explorer.
2. On the **Tools** menu, click **Internet Options**.
3. Click the **Security** tab.
4. Click **Trusted sites** > Click **Sites...**
5. In the **Add Web site to the Zone:** box, type the following address: <https://www.cuna-cpd.org>
6. Click on **Add**.
7. Uncheck the box:
 

Require server verification (https:) for all sites in this zone
8. In the **Add Web site to the Zone:** box, type the following address: <http://scorm.cutraining.org>
9. Click on **Add** > Click on **OK**.



## CUNA CPDOnline System Requirements Health Check

To repeat the system health check to ensure your pc now meet all necessary system requirements, click on the link below: [http://www.cuna.org/training/lms/lms\\_health\\_check.php](http://www.cuna.org/training/lms/lms_health_check.php)

If you continue to receive results other than green checks, please contact CUNA CPDOnline Student Services at 800-356-9655, x 4072 or [CPDOnline@cuna.coop](mailto:CPDOnline@cuna.coop).