

CPDOnline System Requirements


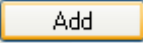

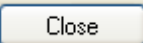
Software Required:

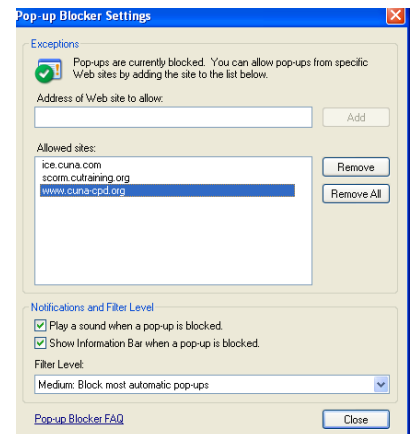
- Internet Explorer 6.0 or Internet Explorer 7 with browser set to enable cookies; Web pop-up blockers must be disabled (**NOTE: Internet Explorer 8 is not supported**)
- Java build 1.4.2_03 or above (**NOTE: Java Version 1.5.0_0, 1.6.0_0 and 1.6.0_18 have known issues and should be avoided**)
- Microsoft Windows 98 SE, Windows NT 4.0 SP6a, Windows 2000 SP4 (Professional, Server, or Advanced Server), Windows XP SP1 or SP2, Windows 2003 Server SP1

Hardware Required:

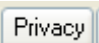
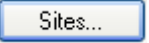
- Intel Pentium 333 MHz processor or equivalent
- 128 MB RAM
- Video graphics adapter able to display 800x600 screen resolution or higher;16-bit color setting or higher (compatible with 8-bit color)

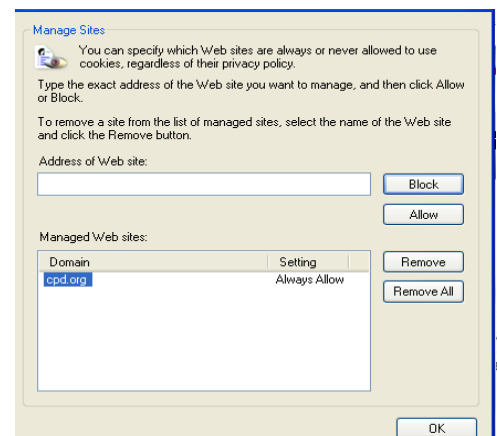
Disable Pop-up Blockers for the CPDOnline Website:

1. Open Internet Explorer.
2. On the **Tools** menu, click **Pop-up Blocker**.
3. Click the **Pop-up Blocker Settings**.
4. In the **Address of Web site to allow** box, type the following address: <https://www.cuna-cpd.org>.
5. Click on .
6. In the **Address of Web site to allow** box, type the following address: <http://scorm.cutraining.org>.
7. Click on .
8. In the **Address of Web site to allow** box, type the following address: <http://ice.cuna.com>.
9. Click on .
10. Click on .


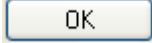


Enable Cookies for the CPDOnline Website:

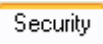



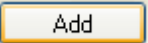
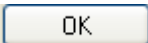
1. Open Internet Explorer.
2. On the **Tools** menu, click **Internet Options**.
3. Click the  **tab** and then click .

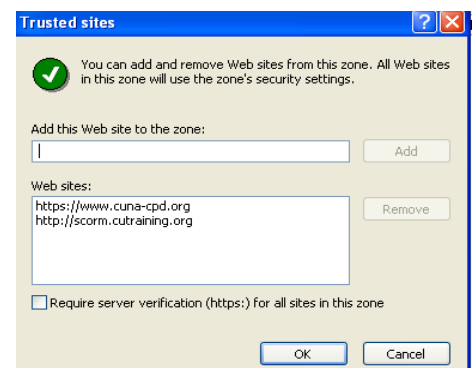


CPDOnline System Requirements

4. In **Address of Web site** field, type the following address:
<https://www.cuna-cpd.org>.
5. To specify that you want Internet Explorer to always allow cookies from the specified Web site to be saved on your computer, click .
6. Click .

Enable Trusted Sites for the CPDOnline Website: (This step is a recommendation, though not a requirement).

1. Open Internet Explorer.
2. On the **Tools** menu, click **Internet Options**.
3. Click the  tab.

4. Click **Trusted sites**.
5. Click .
6. In the **Add Web site to the Zone:** box, type the following address:
<https://www.cuna-cpd.org>
7. Click on .
8. Uncheck the box:
 Require server verification (https:) for all sites in this zone
9. In the **Add Web site to the Zone:** box, type the following address:
<http://scorm.cutraining.org>
10. Click on .
11. Click on .



Optimized Screen Resolution

Screen resolution is the number of little boxes of color called pixels your monitor can show at one time. There are 3 main screen resolutions:

- 640 x 480 - Very basic screen resolution, minimum desktop area
- 800 x 600 - Most common, good desktop area, medium resolution.
- 1024 x 768 - Most desktop area, high resolution, but you must have a good video card to view. Text and images appear much smaller with this setting.

If you have difficulty viewing the screens in full, consider changing to a higher screen resolution.

CPD Online System Requirements

Web Plug-ins

In order to take full advantage of the sound, animation, and graphics included in the courses, we ask that you download the following free web plug-ins. Some of these may already be located on your computer. You may download these yourself, or you may prefer to have your IT/IS department assist you with this.

- Adobe PDF Reader
<http://www.adobe.com/products/acrobat/readstep2.html>
- Adobe Flash Player Version 8.0.24 or higher
<http://get.adobe.com/flashplayer/>

Java Applet Requirements

- Java build 1.4.2_03 or above must be installed on your pc (**NOTE:** Java Version 1.5.0_0, 1.6.0_0 and 1.6.0_18 have known issues and should be avoided)
- **Current Java Applet** - Please check with your IT department for assistance; they can determine if your computer has this software installed. If your computer does not have this software installed, please click on the link below to install:

<http://java.com/en/download/index.jsp>

- **Previous Java Versions**- To obtain previous versions of Java, please click on this link and select the desired version under the Java 2 Platform Standard Edition (J2SE) heading:

<http://java.sun.com/products/archive>