

Arizona Statistics Totals

Year	# of CUs	# of Memberships	Savings (\$)	Loans (\$)	Reserves (\$)*	Assets (\$)
1939	21	2,686	168,236	174,531	6,222	197,741
1940	21	3,128	248,224	253,639		285,018
1941	23	3,920	317,577	298,828		359,974
1942	25	3,802		180,107		
1943	26	3,504		112,421		
1944	24	3,419	318,418	117,812	24,464	349,497
1945	23	3,285	340,278	135,613	16,331	370,860
1946	22	3,661	419,254	249,351		461,877
1947	24	4,667	612,910	513,916	23,233	685,375
1948	28	6,149	865,546	766,559	74,478	958,912
1949	30	7,376	1,141,482	1,118,939	39,032	1,303,535
1950	29	8,750	1,658,826	1,603,895	58,020	1,849,972
1951	36	10,877	2,096,121	1,730,104	75,122	2,298,215
1952	46	15,118	3,148,616	2,966,549	99,544	3,497,081
1953	49	20,353	4,669,381	4,840,861	139,774	5,409,920
1954	68	25,984	6,569,637	6,372,022	209,483	7,517,319
1955	97	37,045	9,578,818	9,823,800	277,820	10,972,129
1956	109	47,984	13,302,203	13,255,216	400,580	15,328,247
1957	120	58,572	17,705,056	18,106,034	546,701	20,310,316
1958	130	71,603	24,431,731	24,468,730	754,365	27,946,053
1959	134	81,011	30,232,358	31,158,476	1,017,654	34,773,236
1960	134	87,537	35,405,082	36,885,105	1,177,154	40,594,710
1961	133	96,641	41,259,568	40,981,075	1,620,149	47,045,899
1962	139	107,268	47,575,358	47,068,200	1,907,977	54,302,617
1963	139	115,410	55,498,261	53,007,622	2,473,558	62,761,825
1964	140	124,992	64,598,981	60,819,161	3,103,952	72,809,752
1965	145	136,401	74,346,483	70,819,319	3,881,592	84,354,546
1966	152	152,659	83,710,036	82,484,993	4,874,963	96,656,918
1967	164	169,668	93,249,992	91,096,161	5,947,000	109,680,968
1968	170	187,980	105,923,510	104,522,951	7,252,297	123,901,221
1969	166	206,249	128,010,741	124,265,393	8,810,975	145,586,388
1970	165	225,982	149,410,619	143,933,156	10,593,342	169,936,082
1971	165	252,633	189,728,934	170,868,163	12,168,731	211,922,825
1972	169	284,075	234,667,441	210,455,507	14,023,904	260,487,657
1973	172	320,724	277,263,790	257,767,453	16,439,138	312,249,742
1974	171	357,110	323,002,912	297,946,213	19,010,868	365,369,855
1975	165	392,336	402,020,233	354,341,026	21,617,706	447,681,370
1976	162	432,867	487,446,006	435,813,859	25,237,923	540,370,684
1977	159	497,699	618,948,523	539,057,386	28,860,954	682,471,741
1978	156	580,642	718,101,557	666,882,700	30,982,932	795,065,273
1979	158	594,418	723,049,525	688,022,294	33,615,475	801,327,870
1980	154	639,411	798,361,343	652,505,941	33,616,095	878,596,496
1981	141	664,772	825,177,725	687,181,140	37,190,501	907,099,732
1982	131	671,009	953,790,306	705,354,628	42,702,644	1,039,811,796
1983	117	665,654	1,127,310,973	821,917,940	49,209,126	1,223,417,338
1984	105	695,902	1,311,271,315	1,040,764,506	59,160,291	1,456,241,930
1985	97	737,677	1,612,323,454	1,198,817,524	71,396,814	1,803,099,402
1986	92	765,696	1,953,237,505	1,370,334,623	79,752,092	2,126,997,899
1987	88	790,641	2,085,776,492	1,500,105,624	86,455,290	2,266,347,653
1988	86	797,373	2,219,859,169	1,620,524,379	105,771,712	2,406,318,585
1989	82	799,063	2,320,820,529	1,738,411,601	91,673,256	2,522,875,994
1990	79	799,237	2,443,902,323	1,775,309,975	159,519,814	2,661,214,926
1991	77	808,314	2,665,897,192	1,764,420,045	179,892,256	2,873,396,990
1992	74	820,166	2,964,522,442	1,825,414,437	230,368,684	3,220,195,926
1993	74	841,073	3,169,983,119	1,964,434,569	288,291,545	3,480,903,401
1994	74	892,092	3,367,320,143	2,404,908,508	339,739,908	3,773,071,766
1995	74	946,149	3,685,684,134	2,834,862,020	392,558,727	4,112,238,343
1996	71	976,692	3,952,448,048	3,126,803,462	452,134,243	4,445,885,363
1997	70	1,042,446	4,355,445,465	3,390,774,904	514,100,159	4,970,516,283
1998	70	1,099,598	5,078,196,802	3,536,663,699	560,683,479	5,702,821,341
1999	67	1,155,005	5,389,328,812	3,958,955,423	616,825,943	6,162,034,604
2000	68	1,241,995	5,782,468,069	4,753,978,226	695,531,235	6,607,948,999
2001	67	1,352,424	7,089,501,968	5,128,251,835	783,655,574	7,985,934,909
2002	66	1,331,328	7,788,665,978	5,403,230,161	884,424,707	8,827,093,200
2003	65	1,370,040	8,390,245,172	5,861,078,550	981,614,198	9,630,851,362
2004	64	1,412,299	8,921,310,595	6,322,197,852	1,070,551,505	10,238,843,774
2005	63	1,477,820	9,686,691,501	7,488,877,544	1,175,889,780	11,138,684,078
2006	58	1,530,964	9,980,549,714	8,686,537,013	1,301,895,098	11,733,849,652
2007	55	1,575,928	10,262,845,559	9,518,567,154	1,395,424,669	12,213,786,404
2008	54	1,578,857	10,770,639,507	9,725,522,868	1,165,261,456	12,524,473,159
2009	53	1,578,110	11,391,999,895	8,848,561,054	949,950,604	12,712,818,011
2010	52	1,467,417	10,868,606,120	7,590,806,409	892,170,572	11,954,000,222
2011	48	1,424,005	10,761,845,055	6,825,093,079	1,026,015,205	12,071,470,163
2012	46	1,433,438	11,287,983,921	7,149,333,196	1,204,776,313	12,823,359,149
2013	45	1,418,881	11,634,260,187	7,718,408,322	1,285,852,015	13,360,735,913
2014	44	1,427,574	12,135,274,409	8,517,466,990	1,470,415,369	14,215,957,529
2015	44	1,458,156	13,124,505,751	9,354,882,293	1,588,995,214	15,273,980,186
2016	43	1,499,714	14,027,301,119	10,311,376,798	1,714,981,566	16,205,156,207

* Beginning 1990, Reserves contains undivided earnings.

Arizona State Statistics

Year	# of CUs	# of Memberships	Savings (\$)	Loans (\$)	Reserves (\$)*	Assets (\$)
1939	4	330	29,406	33,866	2,126	37,480
1940	5	450	45,224	51,639		56,018
1941	5	500	48,580	51,828		
1942	4	475		35,994		
1943	6	400		14,421		
1944	4	310	29,948	14,388	10,938	37,720
1945	4	279	30,135	9,035	3,531	38,713
1946	4	326	35,298	12,471		43,955
1947	5	390	40,070	22,654	4,031	48,455
1948	6	662	64,562	58,313	46,954	74,011
1949	7	743	69,578	77,490	4,074	89,570
1950	6	931	115,132	118,910	6,100	125,818
1951	5	909	116,197	115,460	6,065	136,875
1952	9	1,139	157,834	188,811	6,368	215,081
1953	9	2,512	399,205	448,520	12,785	464,967
1954	22	3,599	706,376	757,764	21,965	863,202
1955	36	6,672	1,386,136	1,441,064	31,145	1,570,555
1956	40	9,447	2,065,895	2,207,485	40,325	2,437,186
1957	48	13,041	3,298,819	3,514,033	66,291	3,878,567
1958	56	16,675	4,960,845	5,352,773	117,851	5,897,659
1959	59	19,466	6,470,310	7,241,308	144,873	7,858,224
1960	57	20,933	8,095,187	8,433,422	132,944	9,376,801
1961	56	23,378	9,091,850	9,131,618	281,115	10,730,446
1962	59	26,490	10,465,933	10,165,362	330,556	12,293,059
1963	55	28,427	12,348,275	11,379,663	341,384	14,490,309
1964	54	30,453	14,269,981	13,051,161	493,952	16,676,752
1965	50	34,165	16,532,483	15,000,319	668,592	19,713,546
1966	49	36,554	18,442,036	17,232,993	939,963	22,120,918
1967	52	38,317	18,956,992	17,899,161	1,188,000	24,184,968
1968	50	43,863	21,156,510	19,387,951	1,517,297	26,754,221
1969	48	46,498	28,520,741	22,497,393	1,821,975	31,907,388
1970	46	48,218	31,801,619	25,212,156	2,072,342	35,533,082
1971	53	54,354	41,305,934	30,547,163	2,401,731	45,681,825
1972	55	71,851	58,779,441	47,094,507	3,190,904	64,893,657
1973	66	85,975	70,782,790	58,834,453	3,831,138	79,476,742
1974	66	97,194	89,233,912	70,857,213	4,560,868	96,870,855
1975	64	104,677	110,407,879	85,515,035	5,187,706	118,549,513
1976	65	116,695	135,093,006	106,667,859	5,937,923	145,570,684
1977	64	144,541	178,741,523	144,228,386	7,112,954	193,538,741
1978	66	188,415	212,569,557	181,276,700	8,651,932	231,795,273
1979	66	189,498	199,470,525	184,834,294	10,596,475	217,877,870
1980	66	196,793	212,547,343	177,729,941	11,721,095	239,364,496
1981	62	210,564	222,874,725	195,119,140	13,427,501	253,970,732
1982	62	214,549	289,035,306	230,900,628	17,132,644	322,912,796
1983	55	205,915	358,410,973	280,017,940	20,851,126	397,017,338
1984	45	216,662	423,890,923	356,695,396	24,067,553	474,583,646
1985	43	236,650	536,056,185	426,527,127	29,428,490	605,314,565
1986	41	237,168	652,249,246	499,497,293	32,562,111	720,356,113
1987	37	244,661	699,472,219	528,754,843	33,889,167	768,312,397
1988	36	243,573	723,977,299	557,591,553	40,673,111	789,524,008
1989	33	248,333	743,826,869	583,791,253	32,372,977	814,557,407
1990	32	245,894	775,055,363	593,916,839	35,713,716	850,961,943
1991	30	229,681	777,715,002	531,782,696	45,751,158	835,083,325
1992	28	234,639	868,872,017	540,756,839	58,638,976	932,804,044
1993	28	243,446	945,816,843	603,855,484	75,375,409	1,026,471,073
1994	28	255,609	1,000,006,643	735,429,504	91,958,453	1,110,218,314
1995	28	269,510	1,091,393,395	862,645,731	106,209,680	1,205,654,375
1996	25	282,508	1,171,796,138	961,665,075	120,592,416	1,310,333,708
1997	25	302,255	1,286,759,603	1,047,938,729	137,749,191	1,472,359,808
1998	26	344,125	1,629,546,234	1,180,966,142	156,185,277	1,814,601,679
1999	27	367,553	1,775,573,608	1,355,951,173	197,832,335	1,987,477,305
2000	29	456,225	2,162,144,332	1,882,712,136	254,157,460	2,501,966,349
2001	28	470,619	2,683,289,053	1,861,473,945	272,893,650	2,971,203,705
2002	29	504,955	3,115,393,080	1,964,359,684	326,692,350	3,457,764,017
2003	30	522,217	3,367,758,407	2,086,272,953	350,450,875	3,744,405,362
2004	29	525,999	3,502,249,605	2,232,742,438	370,331,945	3,900,964,030
2005	28	533,630	3,626,769,404	2,638,230,786	399,061,079	4,064,313,351
2006	27	645,790	4,571,934,194	3,818,647,984	540,187,890	5,234,442,512
2007	25	666,261	4,665,073,664	4,305,834,688	582,747,825	5,385,146,680
2008	25	667,943	4,904,224,528	4,424,459,373	508,770,357	5,543,404,053
2009	23	639,893	5,104,377,656	4,041,879,316	443,690,830	5,664,082,846
2010	21	593,467	4,900,966,557	3,608,065,264	450,010,724	5,413,777,527
2011	20	576,712	4,941,063,173	3,405,316,422	499,799,870	5,506,703,538
2012	19	586,853	5,128,988,851	3,678,859,073	556,474,819	5,789,637,826
2013	19	605,607	5,352,570,976	4,173,475,790	593,980,142	6,165,396,033
2014	19	621,005	5,646,625,335	4,713,623,336	647,699,237	6,536,708,326
2015	19	635,725	6,121,337,194	5,119,190,489	686,957,744	7,017,786,908
2015	19	656,092	6,446,301,489	5,560,728,279	720,014,249	7,411,492,943

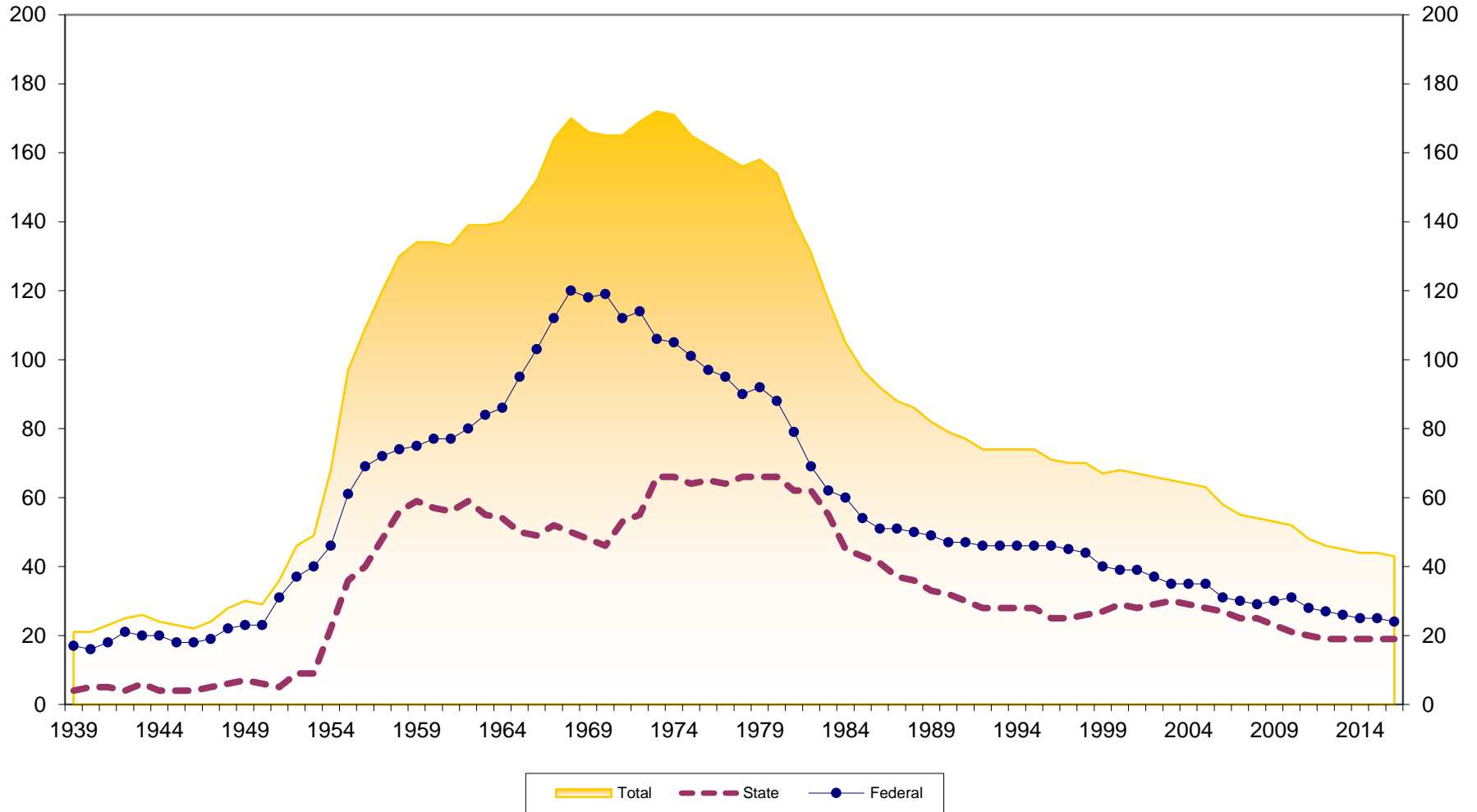
* Beginning 1990, Reserves includes undivided earnings.

Arizona Federal Statistics

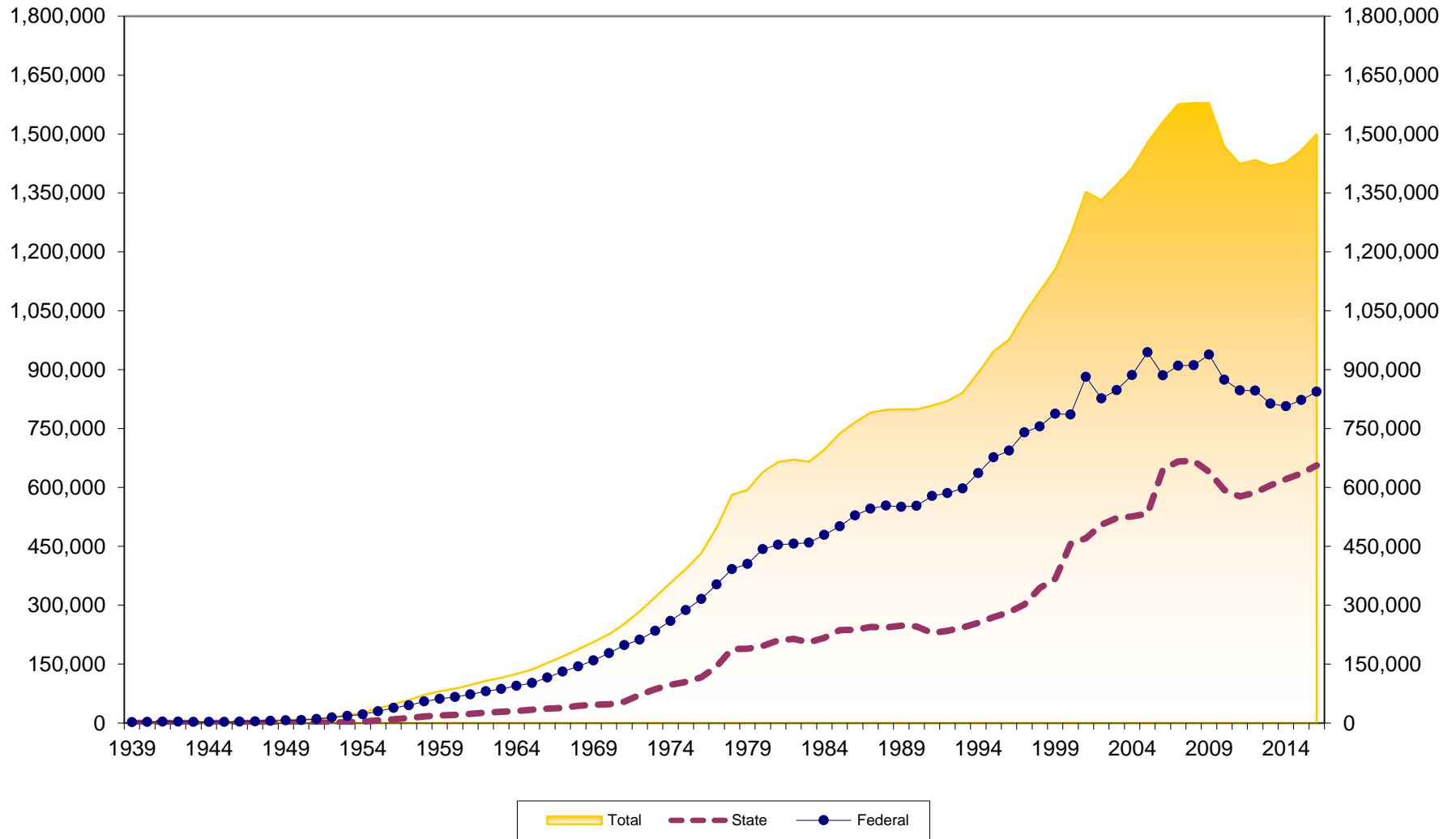
Year	# of CUs	# of Memberships	Savings (\$)	Loans (\$)	Reserves (\$)*	Assets (\$)
1939	17	2,356	138,830	140,665	4,096	160,261
1940	16	2,678	203,000	202,000	8,665	229,000
1941	18	3,420	268,997	247,000		302,000
1942	21	3,327	283,857	144,113	11,810	312,937
1943	20	3,104	284,845	98,000		307,000
1944	20	3,109	288,470	103,424	13,526	311,777
1945	18	3,006	310,143	126,578	12,800	332,147
1946	18	3,335	383,956	236,880		417,922
1947	19	4,277	572,840	491,262	19,202	636,920
1948	22	5,487	800,984	708,246	27,524	884,901
1949	23	6,633	1,071,904	1,041,449	34,958	1,213,965
1950	23	7,819	1,543,694	1,484,985	51,920	1,724,154
1951	31	9,968	1,979,924	1,614,644	69,057	2,161,340
1952	37	13,979	2,990,782	2,777,738	93,176	3,282,000
1953	40	17,841	4,270,176	4,392,341	126,989	4,944,953
1954	46	22,385	5,863,261	5,614,258	187,518	6,654,117
1955	61	30,373	8,192,682	8,382,736	246,675	9,401,574
1956	69	38,537	11,236,308	11,047,731	360,255	12,891,061
1957	72	45,531	14,406,237	14,592,001	480,410	16,431,749
1958	74	54,928	19,470,886	19,115,957	636,514	22,048,394
1959	75	61,545	23,762,048	23,917,168	872,781	26,915,012
1960	77	66,604	27,309,895	28,451,683	1,044,210	31,217,909
1961	77	73,263	32,167,718	31,849,457	1,339,034	36,315,453
1962	80	80,778	37,109,425	36,902,838	1,577,421	42,009,558
1963	84	86,983	43,149,986	41,627,959	2,132,174	48,271,516
1964	86	94,539	50,329,000	47,768,000	2,610,000	56,133,000
1965	95	102,236	57,814,000	55,819,000	3,213,000	64,641,000
1966	103	116,105	65,268,000	65,252,000	3,935,000	74,536,000
1967	112	131,351	74,293,000	73,197,000	4,759,000	85,496,000
1968	120	144,117	84,767,000	85,135,000	5,735,000	97,147,000
1969	118	159,751	99,490,000	101,768,000	6,989,000	113,679,000
1970	119	177,764	117,609,000	118,721,000	8,521,000	134,403,000
1971	112	198,279	148,423,000	140,321,000	9,767,000	166,241,000
1972	114	212,224	175,888,000	163,361,000	10,833,000	195,594,000
1973	106	234,749	206,481,000	198,933,000	12,608,000	232,773,000
1974	105	259,916	233,769,000	227,089,000	14,450,000	268,499,000
1975	101	287,659	291,612,354	268,825,991	16,430,000	329,131,857
1976	97	316,172	352,353,000	329,146,000	19,300,000	394,800,000
1977	95	353,158	440,207,000	394,829,000	21,748,000	488,933,000
1978	90	392,227	505,532,000	485,606,000	22,331,000	563,270,000
1979	92	404,920	523,579,000	503,188,000	23,019,000	583,450,000
1980	88	442,618	585,814,000	474,776,000	21,895,000	639,232,000
1981	79	454,208	602,303,000	492,062,000	23,763,000	653,129,000
1982	69	456,460	664,755,000	474,454,000	25,570,000	716,899,000
1983	62	459,739	768,900,000	541,900,000	28,358,000	826,400,000
1984	60	479,240	887,380,392	684,069,110	35,092,738	981,658,284
1985	54	501,027	1,076,267,269	772,290,397	41,968,324	1,197,784,837
1986	51	528,528	1,300,988,259	870,837,330	47,189,981	1,406,641,786
1987	51	545,980	1,386,304,273	971,350,781	52,566,123	1,498,035,256
1988	50	553,800	1,495,881,870	1,062,932,826	65,098,601	1,616,794,577
1989	49	550,730	1,576,993,660	1,154,620,348	59,300,279	1,708,318,587
1990	47	553,343	1,668,846,960	1,181,393,136	123,806,098	1,810,252,983
1991	47	578,633	1,888,182,190	1,232,637,349	134,141,098	2,038,313,665
1992	46	585,527	2,095,650,425	1,284,657,598	171,729,708	2,287,391,882
1993	46	597,627	2,224,166,276	1,360,579,085	212,916,136	2,454,432,328
1994	46	636,483	2,367,313,500	1,669,479,004	247,781,455	2,662,853,452
1995	46	676,639	2,594,290,739	1,972,216,289	286,349,047	2,906,583,968
1996	46	694,184	2,780,651,910	2,165,138,387	331,541,827	3,135,551,655
1997	45	740,191	3,068,685,862	2,342,836,175	376,350,968	3,498,156,475
1998	44	755,473	3,448,650,568	2,355,697,557	404,498,202	3,888,219,662
1999	40	787,452	3,613,755,204	2,603,004,250	418,993,608	4,174,557,299
2000	39	785,770	3,620,323,737	2,871,266,090	441,373,775	4,105,982,650
2001	39	881,805	4,406,212,915	3,266,777,890	510,761,924	5,014,731,204
2002	37	826,373	4,673,272,898	3,438,870,477	557,732,357	5,369,329,183
2003	35	847,823	5,022,486,765	3,774,805,597	631,163,323	5,886,446,000
2004	35	886,300	5,419,060,990	4,089,455,414	700,219,560	6,337,879,744
2005	35	944,190	6,059,922,097	4,850,646,758	776,828,701	7,074,370,727
2006	31	885,174	5,408,615,520	4,867,889,029	761,707,208	6,499,407,140
2007	30	909,667	5,597,771,895	5,212,732,466	812,676,844	6,828,639,724
2008	29	910,914	5,866,414,979	5,301,063,495	656,491,099	6,981,069,106
2009	30	938,217	6,287,622,239	4,806,681,738	506,259,774	7,048,735,165
2010	31	873,950	5,967,639,563	3,982,741,145	442,159,848	6,540,222,695
2011	28	847,293	5,820,781,882	3,419,776,657	526,215,335	6,564,766,625
2012	27	846,585	6,158,995,070	3,470,474,123	648,301,494	7,033,721,323
2013	26	813,274	6,281,689,211	3,544,932,532	691,871,873	7,195,339,880
2014	25	806,569	6,488,649,074	3,803,843,654	822,716,132	7,679,249,203
2015	25	822,431	7,003,168,557	4,235,691,804	902,037,470	8,256,193,278
2016	24	843,622	7,580,999,630	4,750,648,519	994,967,317	8,793,663,264

* Beginning 1990, Reserves contains undivided earnings.

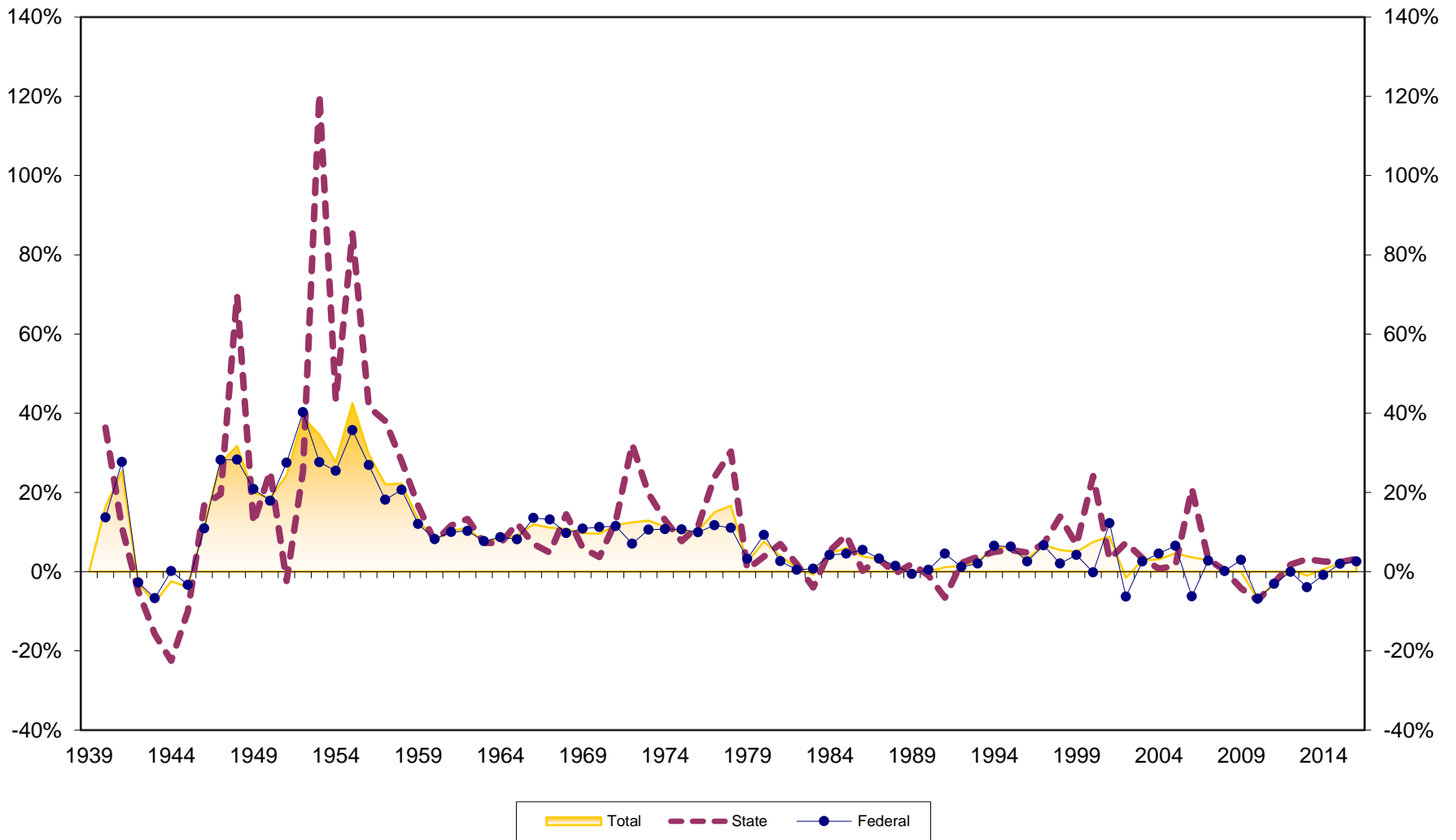
Number of Credit Unions in Arizona 1939-2016



Credit Union Memberships in Arizona 1939-2016

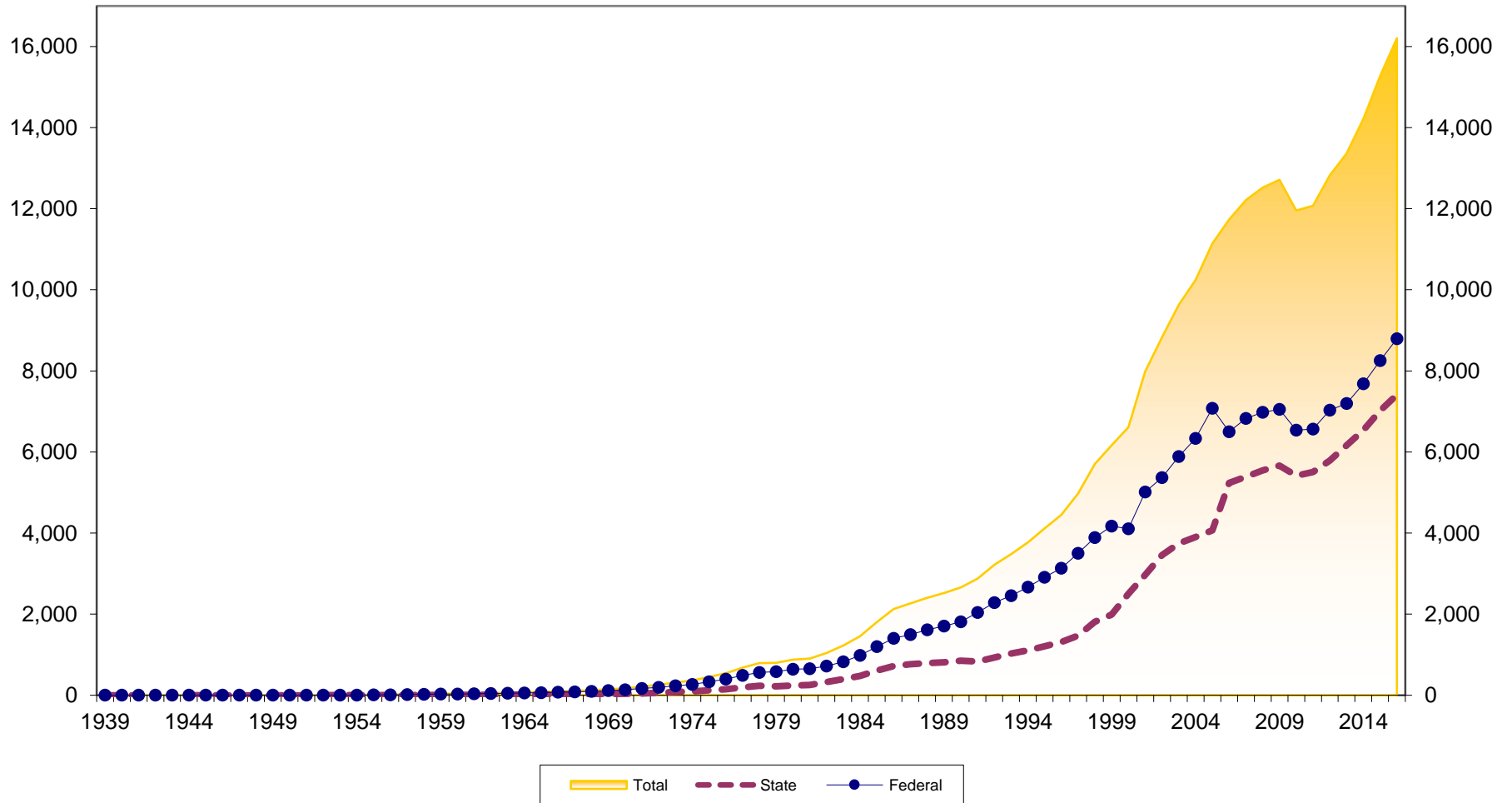


Membership Growth at Arizona Credit Unions 1939-2016

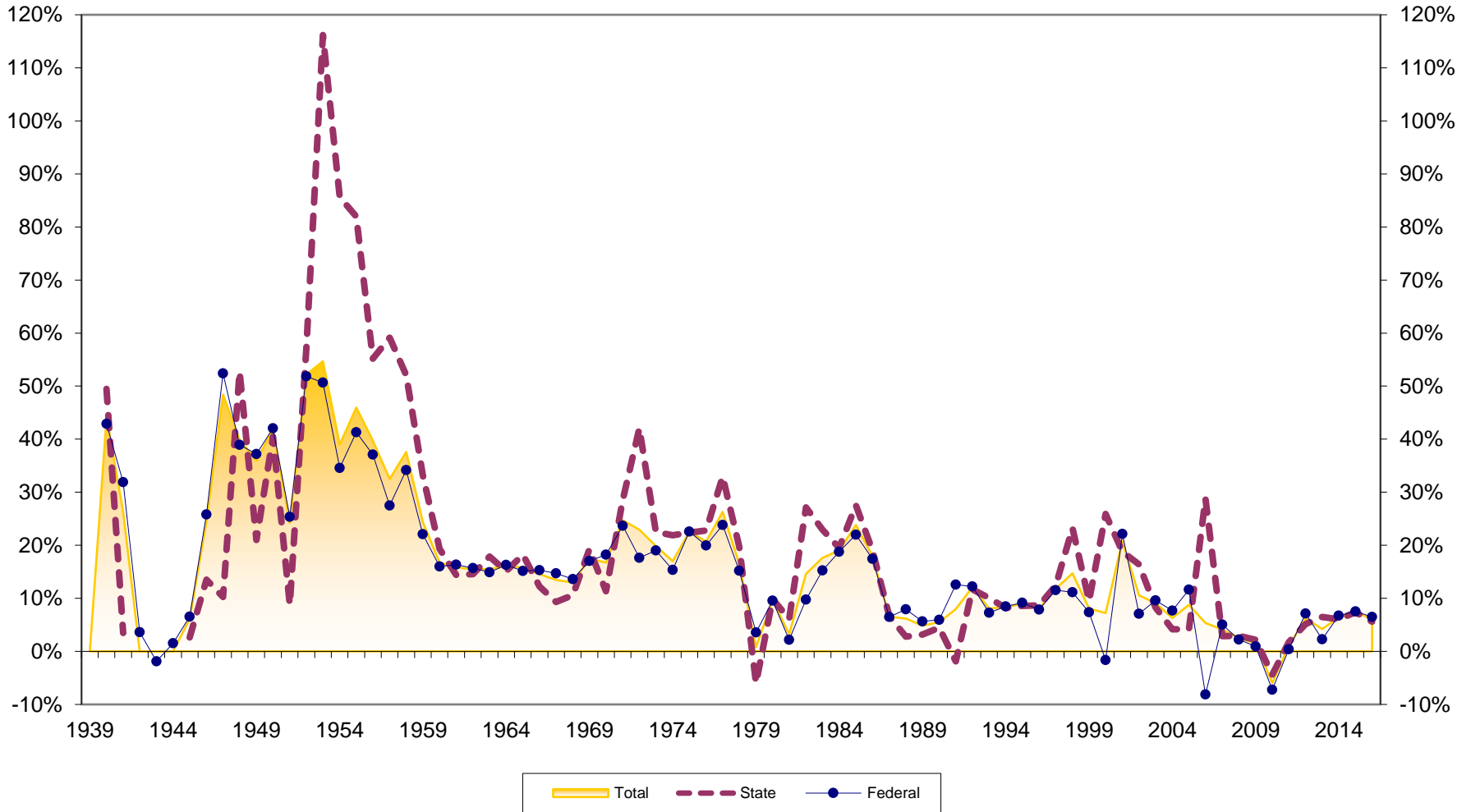


Arizona Credit Union Assets (in \$Millions)

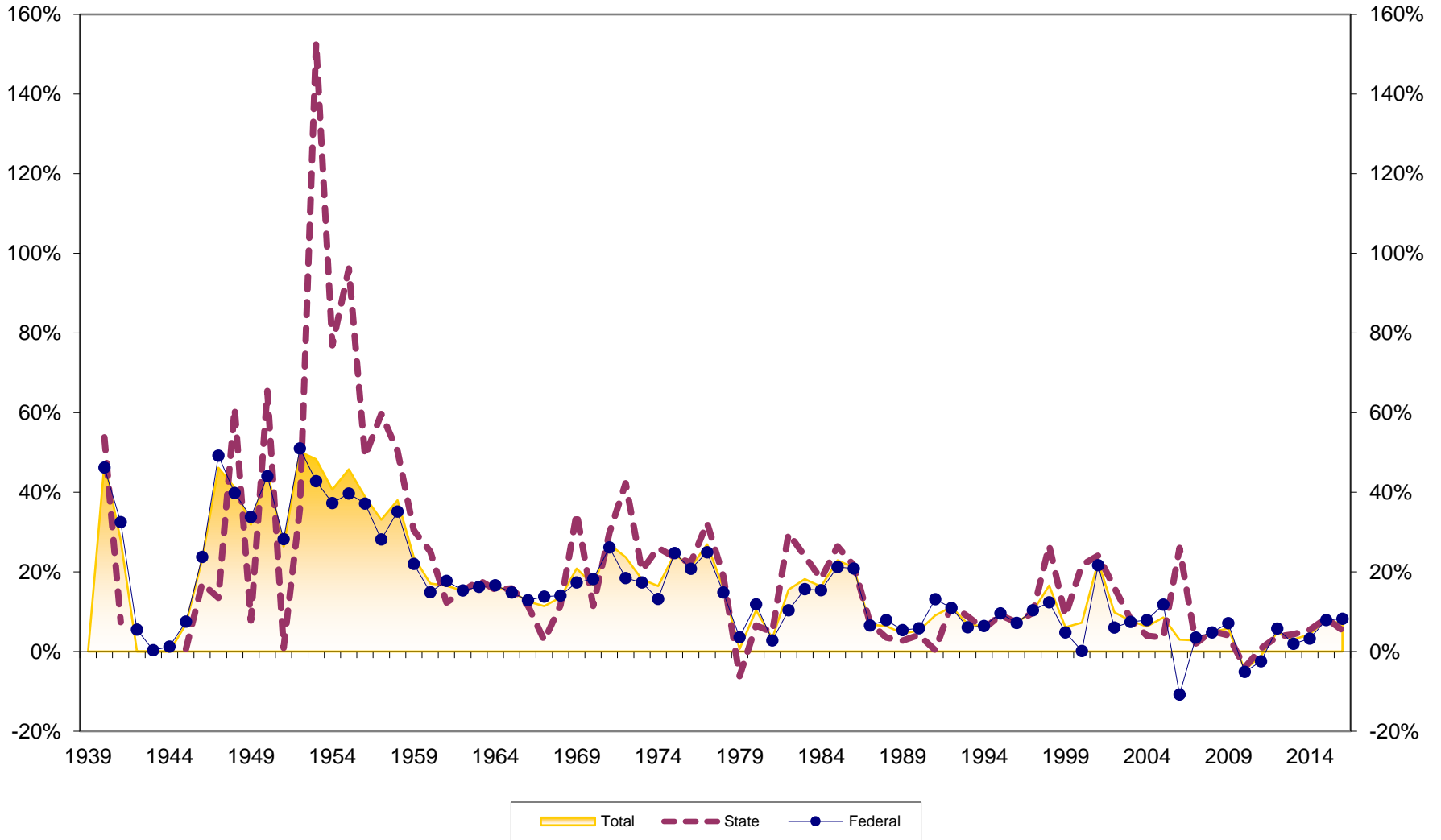
1939-2016



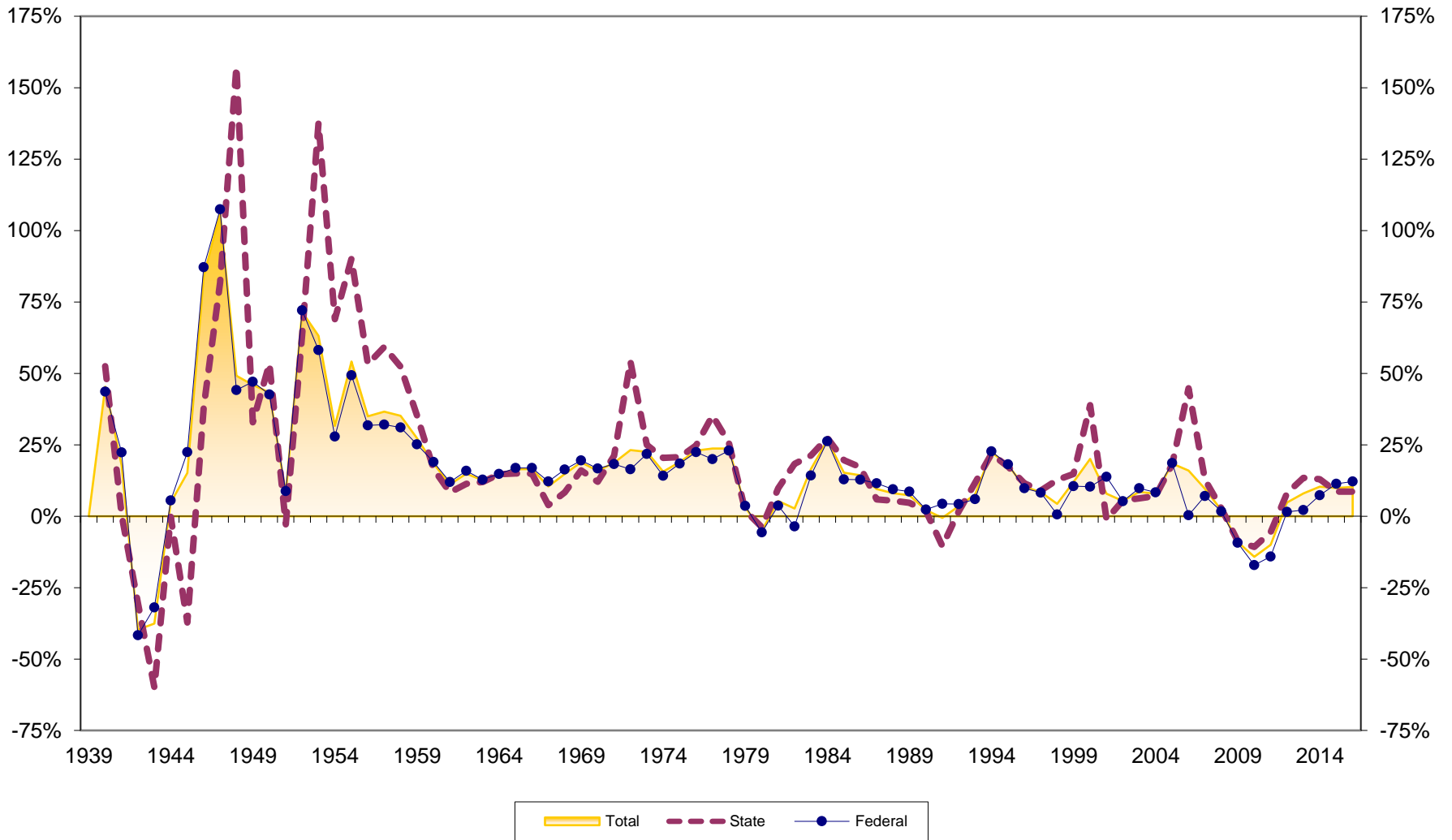
Asset Growth at Arizona Credit Unions 1939-2016



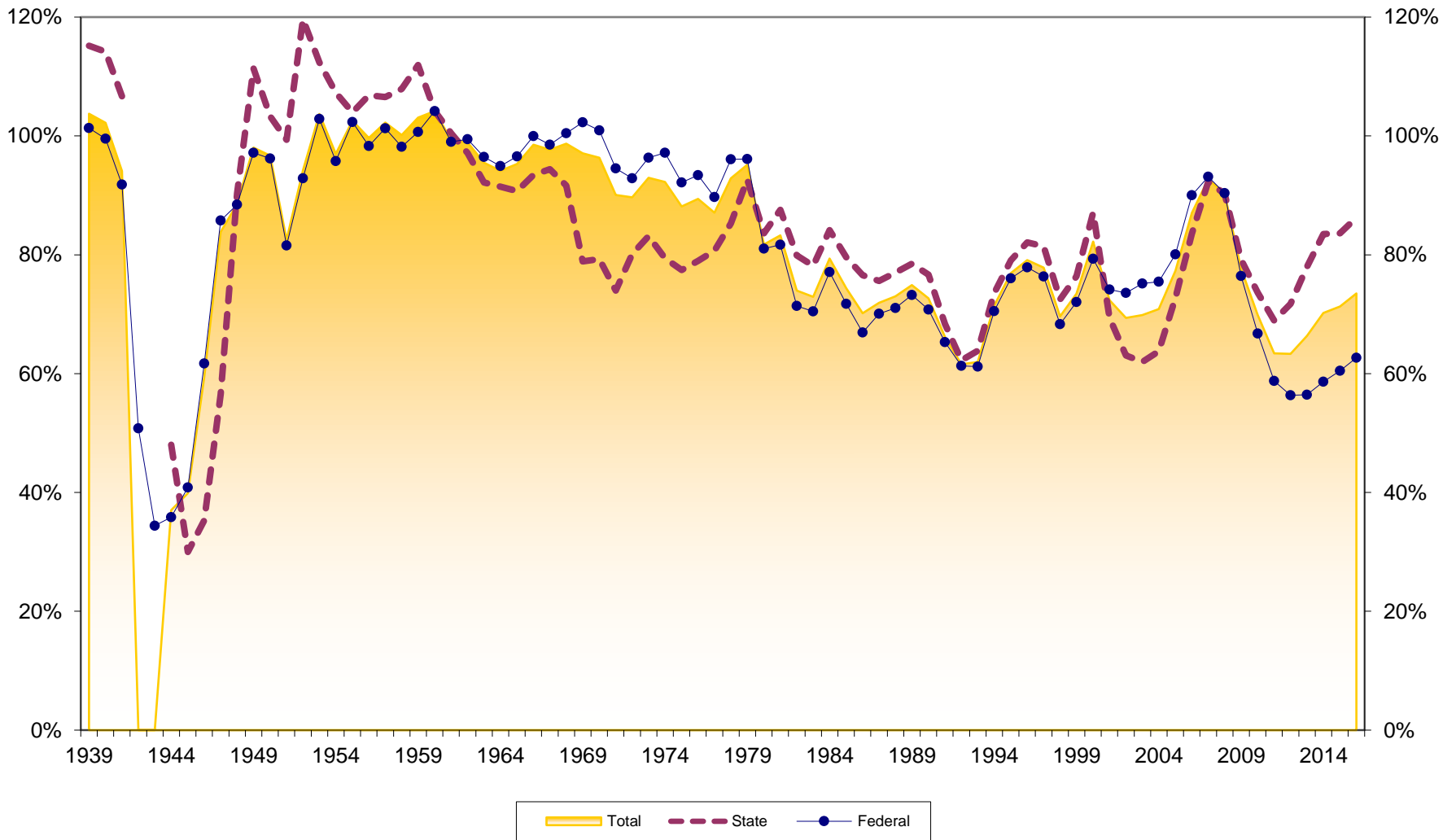
Savings Growth at Arizona Credit Unions 1939-2016



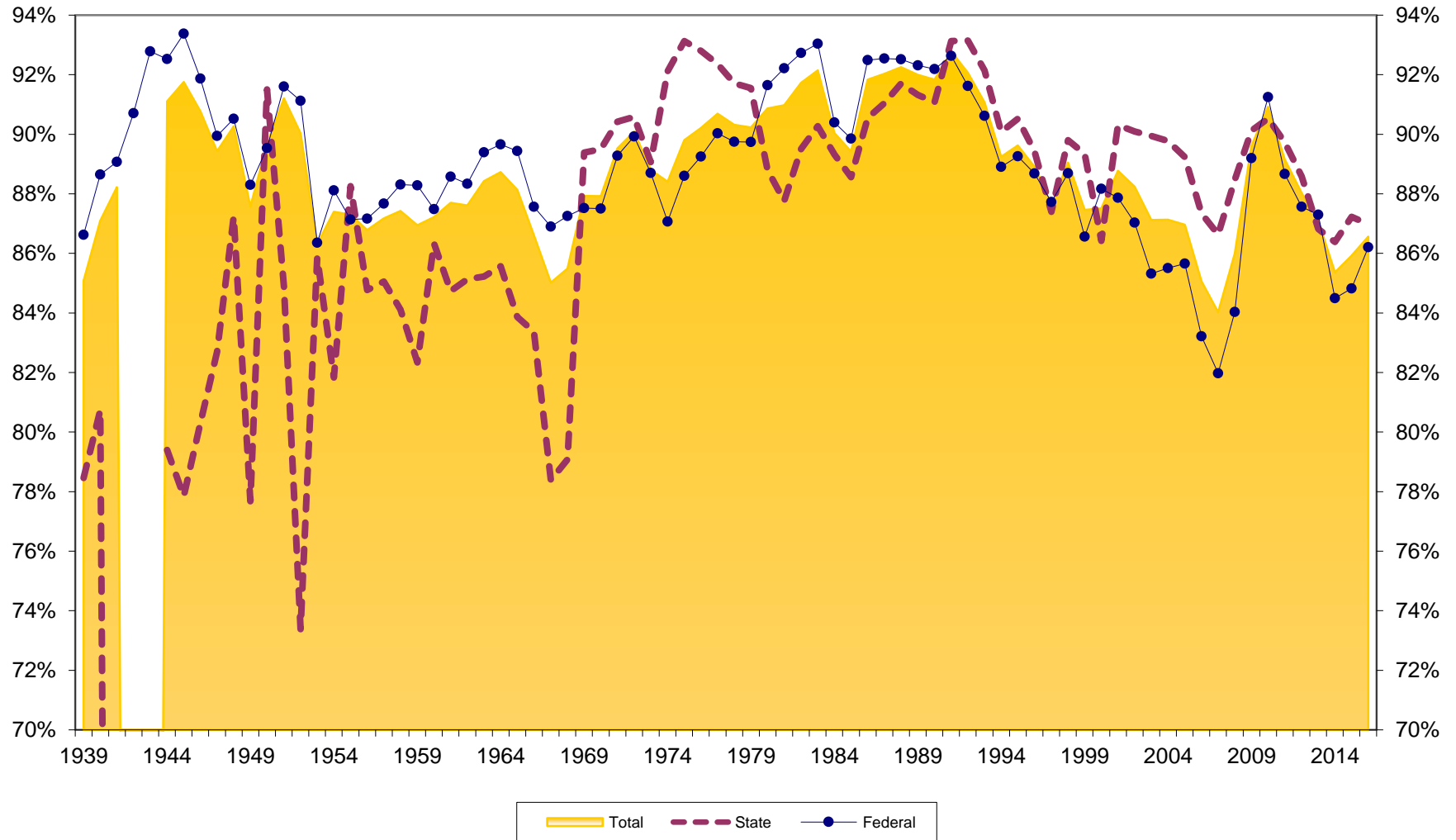
Loan Growth at Arizona Credit Unions 1939-2016



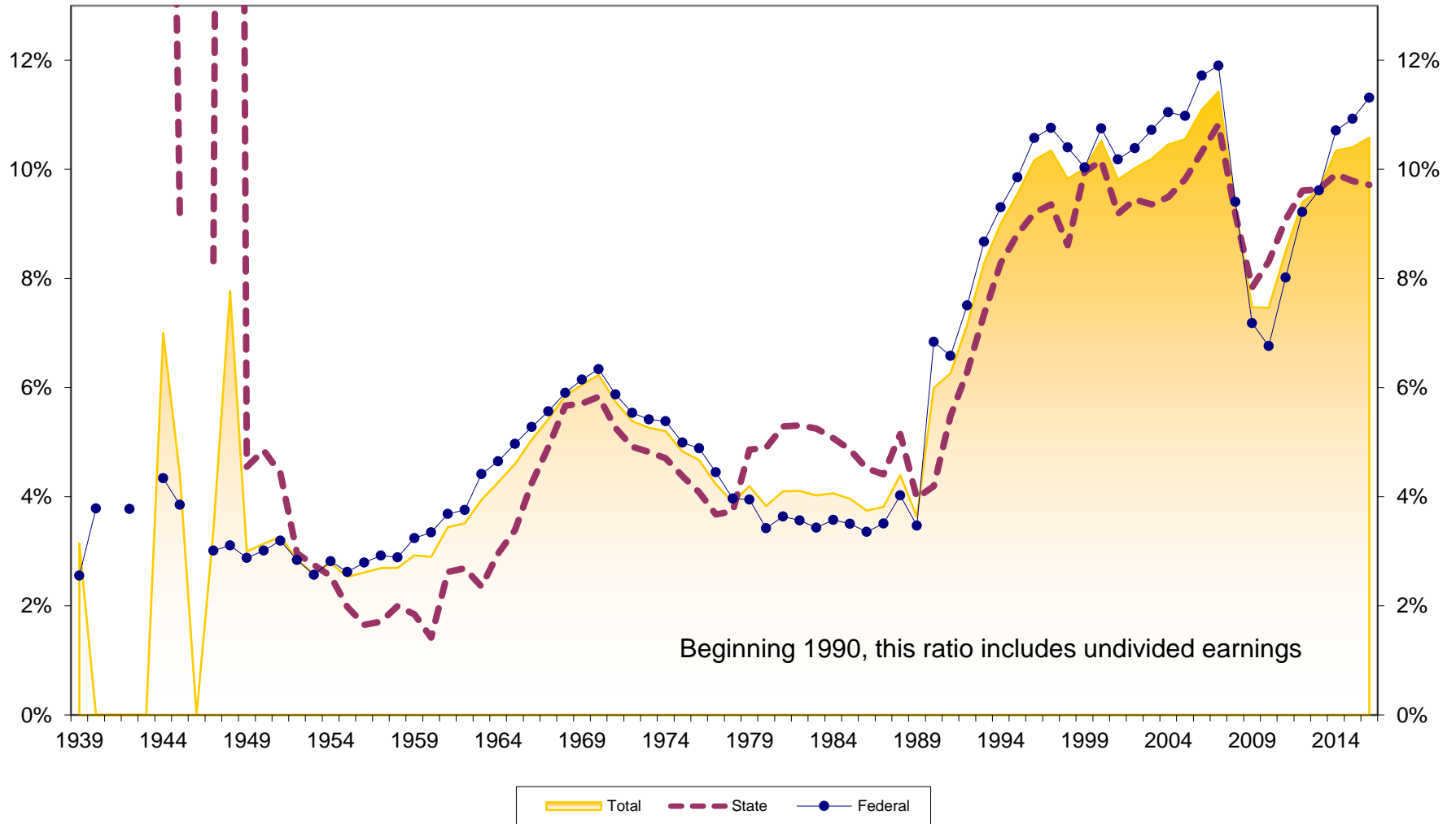
Loan to Savings Ratios at Arizona Credit Unions 1939-2016



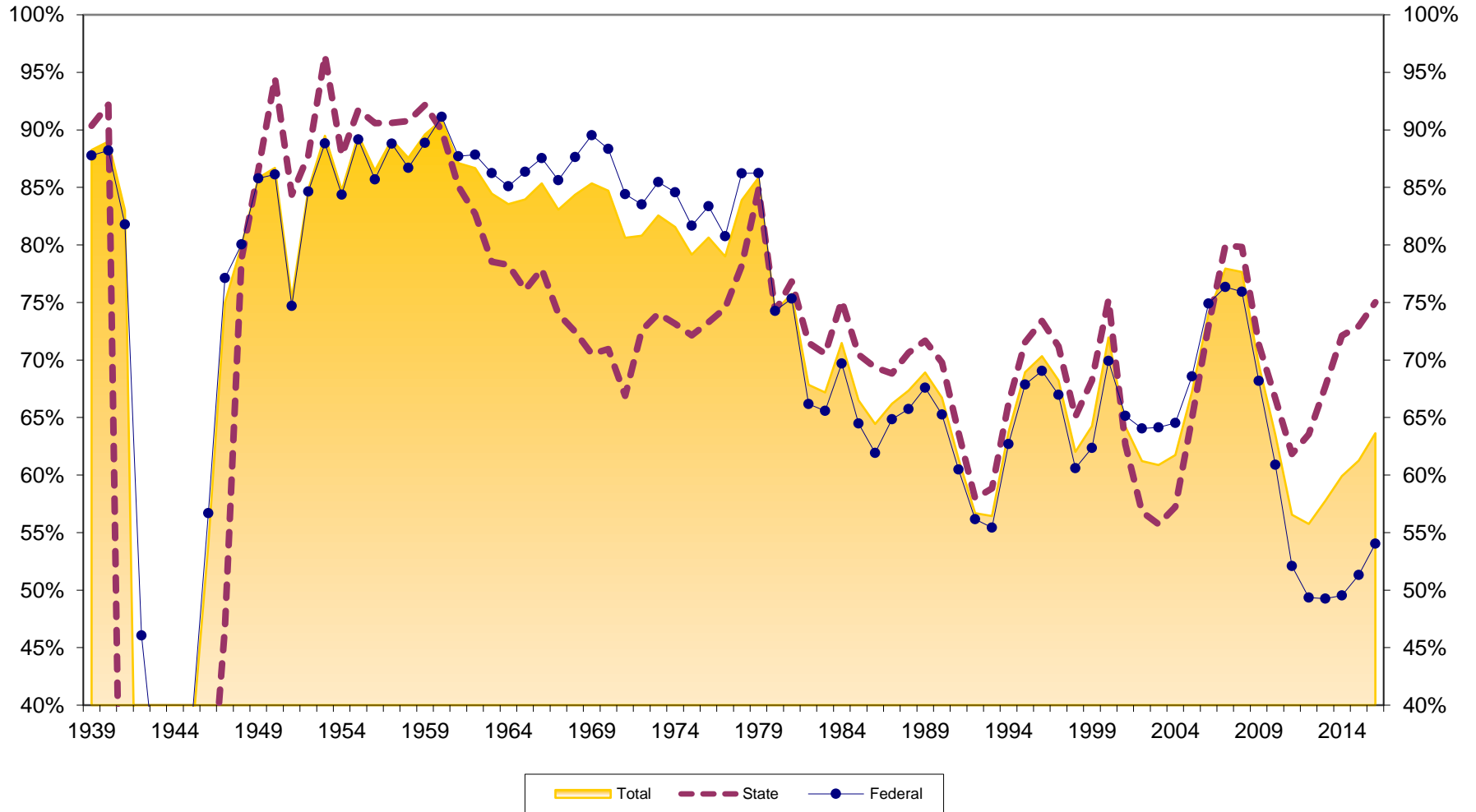
Savings to Assets Ratios at Arizona Credit Unions 1939-2016



Reserves to Assets at Arizona Credit Unions 1939-2016



Loans to Assets Ratios at Arizona Credit Unions 1939-2016



Dollar Asset Growth Among Arizona Credit Unions (in \$Millions) 1939-2016

