

Arkansas Totals Statistics

Year	# of CUs	# of Memberships	Savings (\$)	Loans (\$)	Reserves (\$)*	Assets (\$)
1939	36	4,660	207,996	192,920	12,621	236,235
1940	39	4,867	251,168	238,570	0	289,427
1941	40	5,498	313,817	260,072	0	358,891
1942	37	3,282	74,578	132,043	5,246	83,949
1943	35	3,682	65,752	103,315	0	74,000
1944	26	2,865	219,261	86,860	17,720	232,625
1945	25	2,642	280,647	113,615	19,108	314,409
1946	26	2,642	336,930	161,700	18,059	369,260
1947	27	3,861	424,136	245,165	21,093	462,538
1948	30	4,951	550,656	366,520	42,592	601,167
1949	33	6,002	714,505	481,792	39,919	783,393
1950	34	7,101	861,005	628,156	57,679	986,462
1951	42	8,346	1,093,187	789,475	74,117	1,206,464
1952	45	10,032	1,452,360	1,074,666	59,939	1,590,944
1953	62	12,505	1,901,638	1,454,194	75,322	2,102,042
1954	67	14,947	2,545,718	1,980,311	95,974	2,773,598
1955	75	18,012	2,842,141	2,603,117	122,865	3,617,768
1956	85	22,136	3,387,349	3,573,502	159,396	4,798,274
1957	102	26,788	5,762,913	4,918,819	203,783	6,360,442
1958	113	32,004	7,337,509	6,221,945	112,896	8,152,449
1959	125	38,195	9,875,168	9,099,617	360,709	11,260,391
1960	131	38,786	10,998,784	10,262,988	502,115	12,522,394
1961	129	44,869	13,599,096	11,771,560	587,494	15,294,351
1962	134	49,309	16,052,957	14,472,890	749,670	18,157,138
1963	139	52,956	18,605,273	16,637,067	1,016,245	21,242,483
1964	139	57,610	21,910,683	20,296,299	1,197,703	24,977,208
1965	141	61,774	25,434,849	24,036,364	1,474,827	29,291,490
1966	148	65,815	28,440,440	27,089,316	1,779,407	32,800,534
1967	157	72,743	32,084,205	29,467,838	2,092,592	37,032,205
1968	158	74,361	36,204,218	34,317,564	2,556,268	42,541,679
1969	161	81,540	40,907,273	40,182,059	3,078,832	48,151,344
1970	161	86,562	45,741,523	43,711,289	3,524,478	53,615,188
1971	163	92,172	53,263,080	51,667,892	3,970,089	62,489,304
1972	166	97,572	62,310,312	60,638,751	4,582,440	72,780,745
1973	163	101,762	71,426,649	68,097,836	5,194,120	83,323,204
1974	161	108,333	79,649,057	73,721,075	5,867,572	91,468,537
1975	164	111,930	89,594,346	81,161,826	6,656,637	102,889,850
1976	155	114,968	101,222,400	97,512,914	7,502,315	118,386,138
1977	157	120,669	116,067,322	112,270,153	8,202,502	135,216,907
1978	158	132,940	133,983,000	127,571,000	8,325,000	152,862,000
1979	157	135,626	140,989,567	129,600,734	9,149,287	160,001,580
1980	156	139,890	147,986,000	115,439,000	9,849,000	166,666,000
1981	154	141,686	153,782,000	114,024,000	12,840,000	174,468,000
1982	147	145,235	176,571,000	116,963,000	11,879,000	201,215,000
1983	144	151,100	220,352,872	157,001,643	13,014,989	249,568,326
1984	138	153,469	246,625,498	190,541,895	15,048,970	279,523,931
1985	133	158,322	280,124,155	195,147,931	16,025,008	316,529,559
1986	126	166,118	343,907,011	226,463,922	21,463,414	383,809,914
1987	121	167,836	384,698,388	262,482,786	23,578,979	429,629,366
1988	117	176,854	422,043,271	305,394,482	24,411,620	472,753,025
1989	113	184,153	453,690,179	333,814,240	24,263,128	509,234,655
1990	106	190,506	499,303,678	357,343,760	58,337,987	561,009,943
1991	102	202,270	572,770,861	381,094,765	65,643,472	642,127,270
1992	96	206,207	628,744,263	420,834,433	77,071,214	711,389,199
1993	95	217,225	660,315,382	473,716,621	87,711,387	753,477,933
1994	94	227,021	690,136,376	547,034,989	97,526,756	794,011,631
1995	91	236,715	739,069,248	606,321,729	109,376,393	853,667,589
1996	88	241,199	784,637,233	636,142,561	120,945,612	911,726,277
1997	86	251,679	829,479,539	661,413,601	133,511,231	970,012,273
1998	85	260,323	899,535,845	695,601,453	145,650,619	1,052,693,904
1999	84	268,559	949,017,540	779,238,270	156,384,042	1,113,981,206
2000	82	275,754	1,009,432,665	848,059,331	170,084,868	1,187,631,032
2001	78	277,470	1,119,951,068	855,746,373	183,450,476	1,311,031,608
2002	75	280,028	1,186,168,508	887,931,061	201,970,844	1,395,396,184
2003	74	279,296	1,257,773,673	922,510,532	219,820,283	1,520,207,931
2004	73	280,699	1,309,024,804	966,753,519	233,473,356	1,552,722,849
2005	71	281,985	1,310,623,658	1,005,567,402	241,633,296	1,565,748,886
2006	70	287,185	1,330,817,205	1,026,879,013	254,359,116	1,624,506,280
2007	68	292,665	1,401,864,484	1,105,604,064	266,685,393	1,736,624,620
2008	67	302,913	1,580,949,314	1,255,524,814	274,822,444	1,983,215,167
2009	64	314,551	1,772,997,307	1,393,747,408	288,535,903	2,199,335,429
2010	62	321,953	1,863,481,651	1,426,961,952	296,307,033	2,306,643,303
2011	62	325,529	1,945,899,007	1,454,129,863	310,006,515	2,394,458,117
2012	62	326,035	2,010,299,877	1,490,597,897	323,316,543	2,473,078,083
2013	61	325,137	2,056,603,472	1,575,293,732	334,920,302	2,575,437,512
2014	60	331,264	2,160,250,968	1,709,243,519	349,056,772	2,680,060,962
2015	59	328,686	2,218,703,164	1,689,349,068	358,514,973	2,720,464,123

* Beginning 1990, Reserves contains undivided earnings.

Arkansas Federal Statistics

Year	# of CUs	# of Memberships	Savings (\$)	Loans (\$)	Reserves (\$)*	Assets (\$)
1939	15	1,653	42,955	42,628	2,302	48,256
1940	12	1,761	64,000	61,000		74,000
1941	13	2,207	99,906	74,000		110,000
1942	17	1,266	74,578	33,683	5,246	83,949
1943	14	1,082	65,752	26,000		74,000
1944	9	967	61,918	21,528	5,960	70,853
1945	9	1,023	80,621	28,830	6,286	89,438
1946	9	1,063	94,794	42,583	5,354	103,166
1947	9	1,267	113,364	66,484	6,377	124,221
1948	9	1,518	152,385	101,822	7,993	167,349
1949	12	2,002	214,505	142,802	9,919	233,393
1950	14	2,301	261,005	203,156	12,679	286,462
1951	16	2,743	342,124	241,690	15,793	373,430
1952	17	3,128	468,456	351,989	19,921	509,192
1953	29	4,586	619,774	505,495	24,084	678,505
1954	30	6,014	965,895	805,593	33,537	1,045,014
1955	34	7,283	1,307,543	1,090,807	43,845	1,420,120
1956	36	9,630	1,897,977	1,607,823	61,010	2,063,218
1957	48	13,271	2,649,242	2,377,104	81,643	2,912,107
1958	51	16,441	3,599,381	3,043,432	112,896	3,966,599
1959	56	19,476	5,049,840	4,695,560	169,093	5,729,267
1960	59	22,419	6,376,714	6,001,275	251,752	7,123,484
1961	61	24,343	7,436,895	6,753,874	305,362	8,324,994
1962	62	26,106	8,682,036	7,812,704	384,647	9,767,406
1963	64	28,731	10,164,342	9,437,379	485,605	11,523,276
1964	65	31,696	12,380,000	11,598,000	678,000	14,000,000
1965	68	34,055	14,663,000	13,995,000	867,000	16,812,000
1966	73	37,025	16,478,000	16,025,000	1,074,000	18,845,000
1967	84	41,290	18,817,000	17,392,000	1,258,000	21,459,000
1968	87	44,048	21,686,000	20,525,000	1,531,000	25,047,000
1969	90	48,594	24,913,000	24,829,000	1,846,000	29,129,000
1970	92	52,541	28,678,000	27,712,000	2,152,000	33,577,000
1971	94	56,803	34,017,000	33,635,000	2,475,000	39,889,000
1972	93	59,738	40,669,000	40,150,000	2,891,000	47,356,000
1973	94	64,446	47,616,000	45,706,000	3,383,000	55,118,000
1974	94	68,722	53,857,000	50,139,000	3,904,000	61,589,000
1975	97	71,534	61,414,263	55,478,393	4,553,000	70,391,314
1976	96	74,784	70,844,000	66,963,000	5,170,000	82,558,000
1977	98	79,385	82,329,000	79,071,000	5,809,000	95,479,000
1978	103	88,354	96,590,000	91,010,000	6,067,000	109,448,000
1979	106	92,402	104,715,000	95,004,000	6,920,000	117,944,000
1980	106	96,329	111,084,000	84,332,000	7,070,000	123,966,000
1981	105	96,407	116,094,000	84,354,000	9,842,000	131,159,000
1982	100	100,824	137,423,000	86,318,000	8,542,000	155,834,000
1983	101	112,755	175,300,000	122,400,000	9,420,000	196,200,000
1984	97	115,294	197,956,781	149,878,598	10,865,370	223,526,720
1985	95	128,605	245,169,447	168,393,315	13,464,065	277,097,371
1986	91	134,960	304,050,121	197,675,532	18,958,138	339,192,120
1987	88	139,006	339,907,916	231,978,110	21,077,534	379,789,574
1988	85	147,934	373,978,400	270,734,191	21,754,836	419,287,058
1989	83	156,858	413,195,436	301,193,596	21,988,319	464,472,180
1990	79	163,263	456,545,780	322,314,206	54,655,487	513,789,234
1991	77	184,054	530,928,099	350,398,857	62,181,303	596,255,364
1992	91	203,782	622,505,930	417,019,468	76,534,394	704,585,828
1993	91	214,798	653,759,512	469,934,787	87,139,972	746,305,606
1994	90	224,652	683,790,163	543,048,274	96,930,195	786,933,696
1995	87	234,393	732,623,590	602,393,374	108,743,401	846,506,983
1996	84	238,892	777,690,947	632,358,279	120,290,123	904,080,244
1997	83	250,632	825,186,206	659,045,105	133,286,943	965,411,956
1998	83	259,553	895,756,766	693,603,821	145,436,515	1,048,697,323
1999	82	267,825	945,303,038	777,394,752	156,107,858	1,109,966,721
2000	80	275,132	1,006,405,363	846,321,461	169,817,533	1,184,336,395
2001	78	277,470	1,119,951,068	855,746,373	183,450,476	1,311,031,608
2002	75	280,028	1,186,168,508	887,931,061	201,970,844	1,395,396,184
2003	74	279,296	1,257,773,673	922,510,532	219,820,283	1,520,207,931
2004	73	280,699	1,309,024,804	966,753,519	233,473,356	1,552,722,849
2005	71	281,985	1,310,623,658	1,005,567,402	241,633,296	1,565,748,886
2006	70	287,185	1,330,817,205	1,026,879,013	254,359,116	1,624,506,280
2007	68	292,665	1,401,864,484	1,105,604,064	266,685,393	1,736,624,620
2008	67	302,913	1,580,949,314	1,255,524,814	274,822,444	1,983,215,167
2009	64	314,551	1,772,997,307	1,393,747,408	288,535,903	2,199,335,429
2010	62	321,953	1,863,481,651	1,426,961,952	296,307,033	2,306,643,303
2011	62	325,529	1,945,899,007	1,454,129,863	310,006,515	2,394,458,117
2012	62	326,035	2,010,299,877	1,490,597,897	323,316,543	2,473,078,083
2013	61	325,137	2,056,603,472	1,575,293,732	334,920,302	2,575,437,512
2014	60	331,264	2,160,250,968	1,709,243,519	349,056,772	2,680,060,962
2015	59	328,686	2,218,703,164	1,689,349,068	358,514,973	2,720,464,123

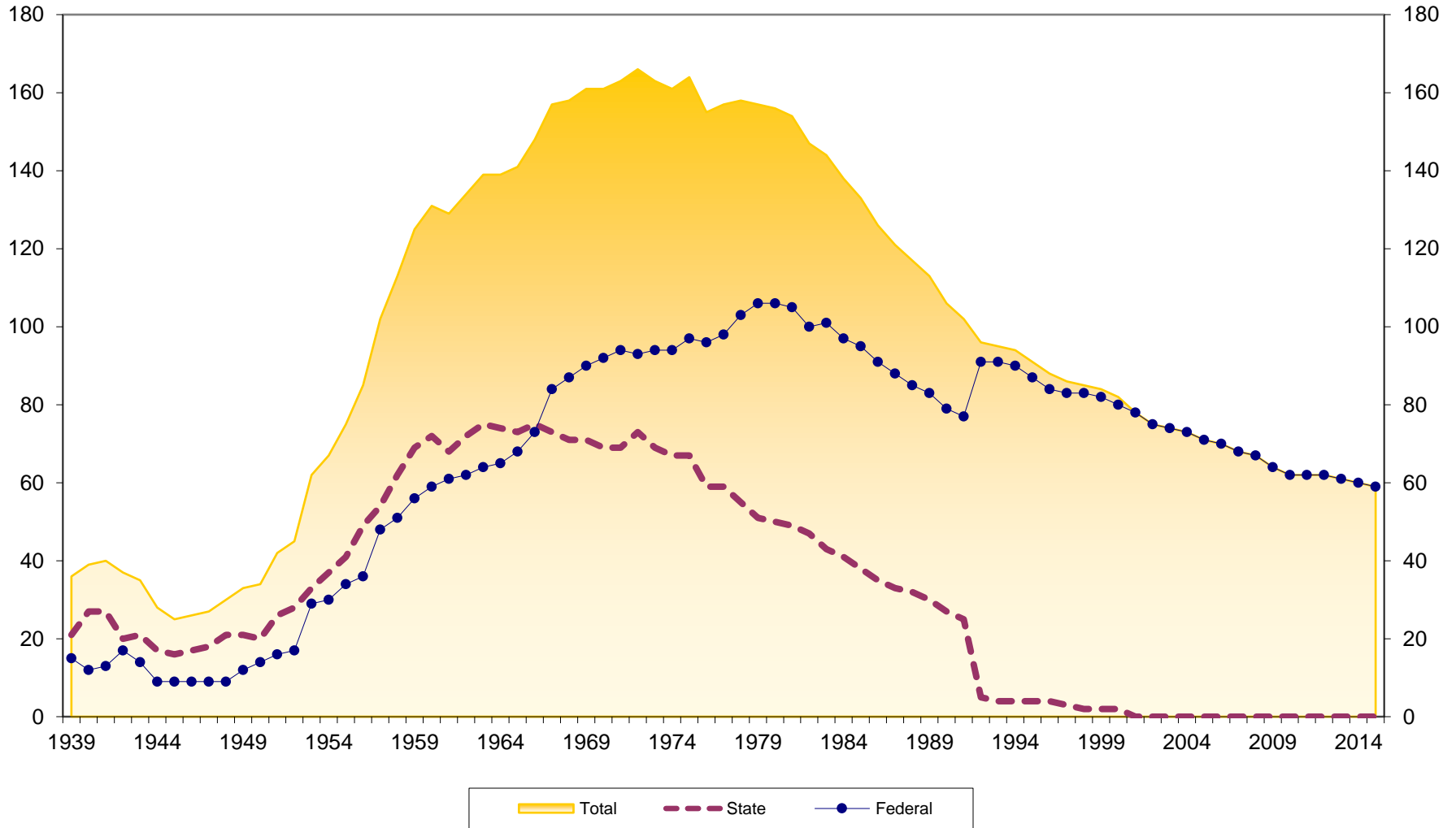
* Beginning 1990, Reserves contains undivided earnings.

Arkansas State Statistics

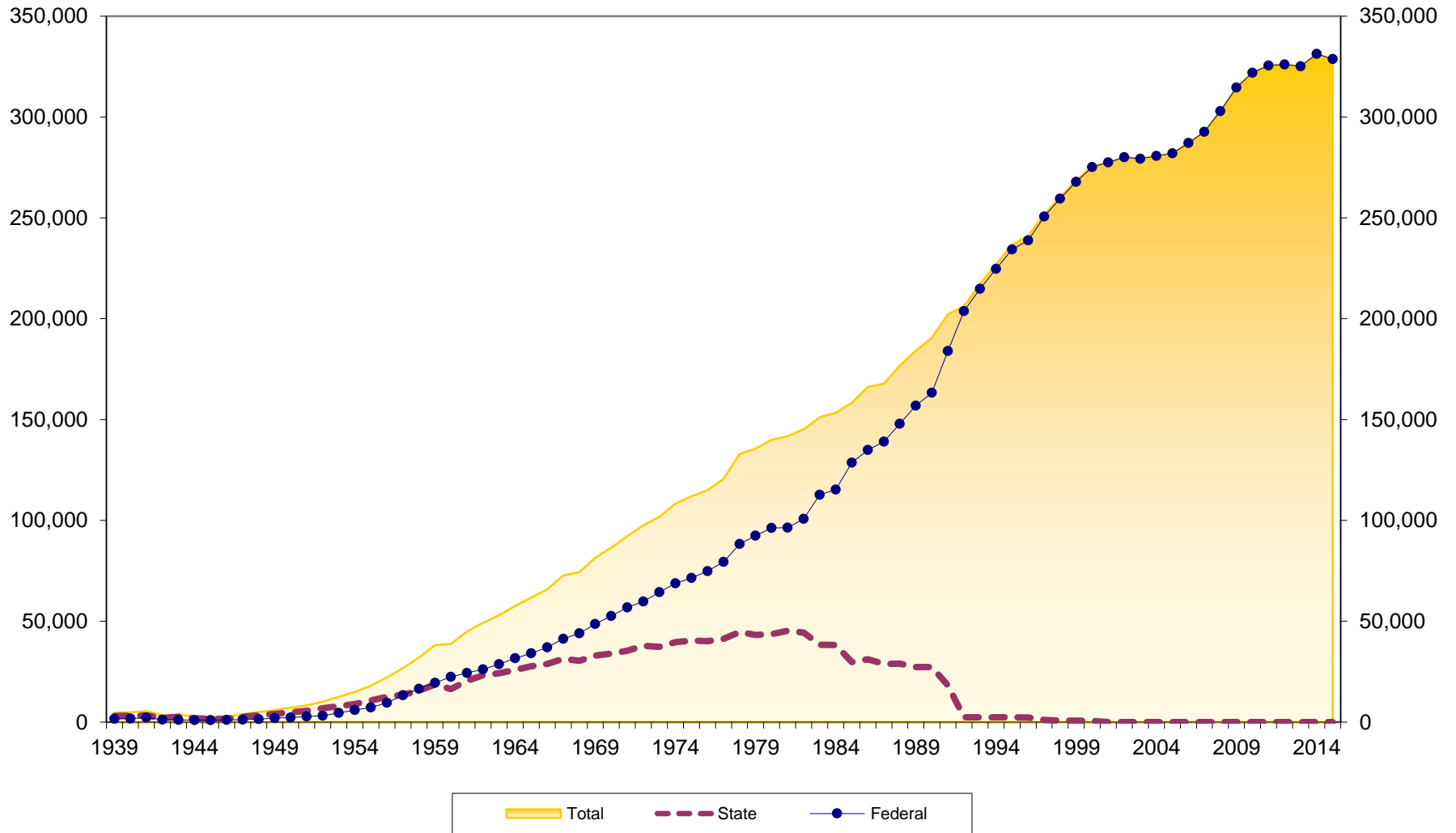
Year	# of CUs	# of Memberships	Savings (\$)	Loans (\$)	Reserves (\$)*	Assets (\$)
1939	21	3,007	165,041	150,292	10,319	187,979
1940	27	3,106	187,168	177,570		215,427
1941	27	3,291	213,911	186,072		248,891
1942	20	2,016		98,360		
1943	21	2,600		77,315		
1944	17	1,898	157,343	65,332	11,760	161,772
1945	16	1,619	200,026	84,785	12,822	224,971
1946	17	1,579	242,136	119,117	12,705	266,094
1947	18	2,594	310,772	178,681	14,716	338,317
1948	21	3,433	398,271	264,698	34,599	433,818
1949	21	4,000	500,000	338,990	30,000	550,000
1950	20	4,800	600,000	425,000	45,000	700,000
1951	26	5,603	751,063	547,785	58,324	833,034
1952	28	6,904	983,904	722,677	40,018	1,081,752
1953	33	7,919	1,281,864	948,699	51,238	1,423,537
1954	37	8,933	1,579,823	1,174,718	62,437	1,728,584
1955	41	10,729	1,534,598	1,512,310	79,020	2,197,648
1956	49	12,506	1,489,372	1,965,679	98,386	2,735,056
1957	54	13,517	3,113,671	2,541,715	122,140	3,448,335
1958	62	15,563	3,738,128	3,178,513		4,185,850
1959	69	18,719	4,825,328	4,404,057	191,616	5,531,124
1960	72	16,367	4,622,070	4,261,713	250,363	5,398,910
1961	68	20,526	6,162,201	5,017,686	282,132	6,969,357
1962	72	23,203	7,370,921	6,660,186	365,023	8,389,732
1963	75	24,225	8,440,931	7,199,688	530,640	9,719,207
1964	74	25,914	9,530,683	8,698,299	519,703	10,977,208
1965	73	27,719	10,771,849	10,041,364	607,827	12,479,490
1966	75	28,790	11,962,440	11,064,316	705,407	13,955,534
1967	73	31,453	13,267,205	12,075,838	834,592	15,573,205
1968	71	30,313	14,518,218	13,792,564	1,025,268	17,494,679
1969	71	32,946	15,994,273	15,353,059	1,232,832	19,022,344
1970	69	34,021	17,063,523	15,999,289	1,372,478	20,038,188
1971	69	35,369	19,246,080	18,032,892	1,495,089	22,600,304
1972	73	37,834	21,641,312	20,488,751	1,691,440	25,424,745
1973	69	37,316	23,810,649	22,391,836	1,811,120	28,205,204
1974	67	39,611	25,792,057	23,582,075	1,963,572	29,879,537
1975	67	40,396	28,180,083	25,683,433	2,103,637	32,498,536
1976	59	40,184	30,378,400	30,549,914	2,332,315	35,828,138
1977	59	41,284	33,738,322	33,199,153	2,393,502	39,737,907
1978	55	44,586	37,393,000	36,561,000	2,258,000	43,414,000
1979	51	43,224	36,274,567	34,596,734	2,229,287	42,057,580
1980	50	43,561	36,902,000	31,107,000	2,779,000	42,700,000
1981	49	45,279	37,688,000	29,670,000	2,998,000	43,309,000
1982	47	44,411	39,148,000	30,645,000	3,337,000	45,381,000
1983	43	38,345	45,052,872	34,601,643	3,594,989	53,368,326
1984	41	38,175	48,668,717	40,663,297	4,183,600	55,997,211
1985	38	29,717	34,954,708	26,754,616	2,560,943	39,432,188
1986	35	31,158	39,856,890	28,788,390	2,505,276	44,617,794
1987	33	28,830	44,790,472	30,504,676	2,501,445	49,839,792
1988	32	28,920	48,064,871	34,660,291	2,656,784	53,465,967
1989	30	27,295	40,494,743	32,620,644	2,274,809	44,762,475
1990	27	27,243	42,757,898	35,029,554	3,682,500	47,220,709
1991	25	18,216	41,842,762	30,695,908	3,462,169	45,871,906
1992	5	2,425	6,238,333	3,814,965	536,820	6,803,371
1993	4	2,427	6,555,870	3,781,834	571,415	7,172,327
1994	4	2,369	6,346,213	3,986,715	596,561	7,077,935
1995	4	2,322	6,445,658	3,928,355	632,992	7,160,606
1996	4	2,307	6,946,286	3,784,282	655,489	7,646,033
1997	3	1,047	4,293,333	2,368,496	224,288	4,600,317
1998	2	770	3,779,079	1,997,632	214,104	3,996,581
1999	2	734	3,714,502	1,843,518	276,184	4,014,485
2000	2	622	3,027,302	1,737,870	267,335	3,294,637
2001	0	0	0	0	0	0
2002	0	0	0	0	0	0
2003	0	0	0	0	0	0
2004	0	0	0	0	0	0
2005	0	0	0	0	0	0
2006	0	0	0	0	0	0
2007	0	0	0	0	0	0
2008	0	0	0	0	0	0
2009	0	0	0	0	0	0
2010	0	0	0	0	0	0
2011	0	0	0	0	0	0
2012	0	0	0	0	0	0
2013	0	0	0	0	0	0
2014	0	0	0	0	0	0
2015	0	0	0	0	0	0

* Beginning 1990, Reserves contains undivided earnings.

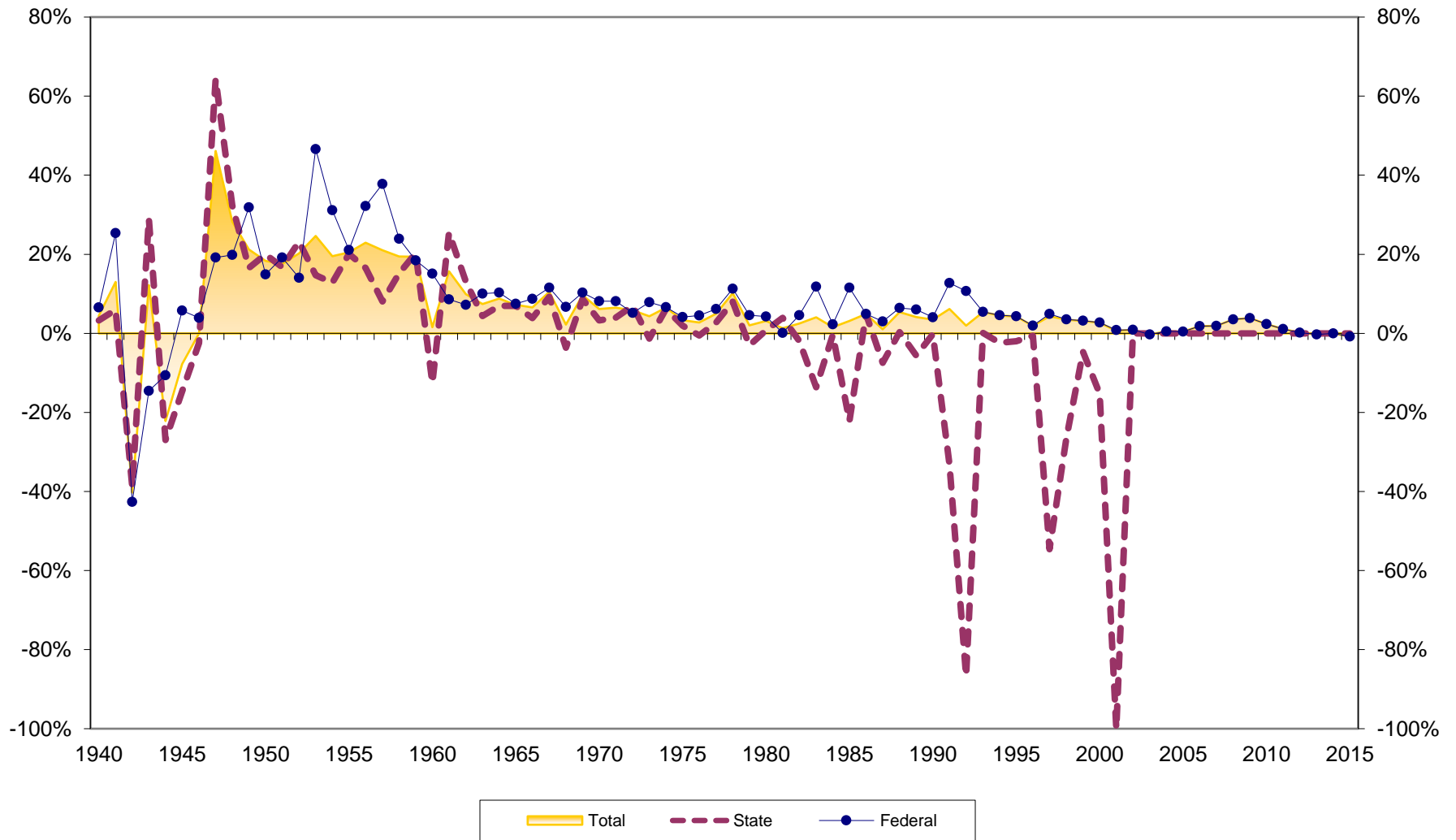
Number of Arkansas Credit Unions 1939-2015



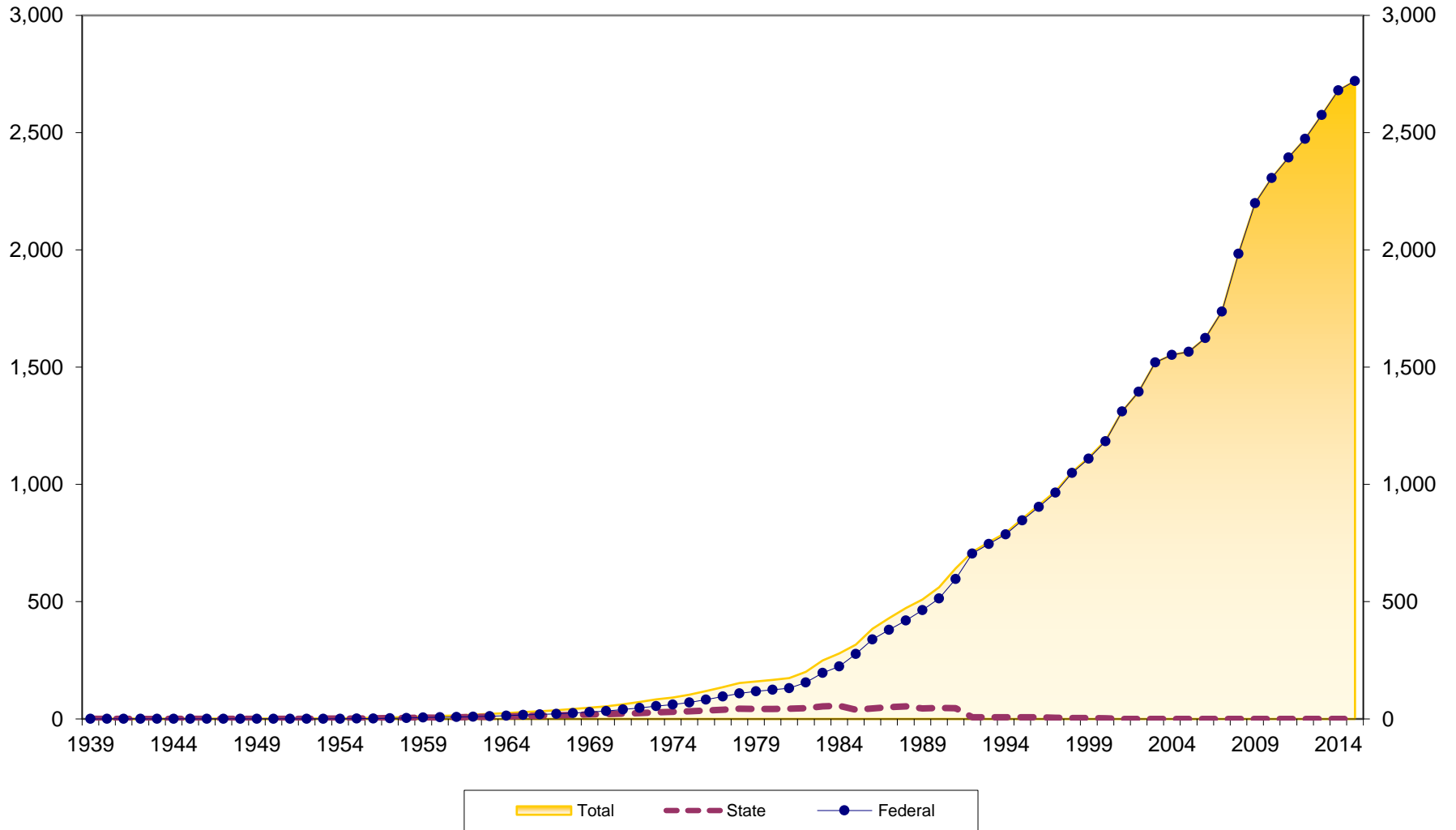
Number of Memberships at Arkansas Credit Unions 1939-2015



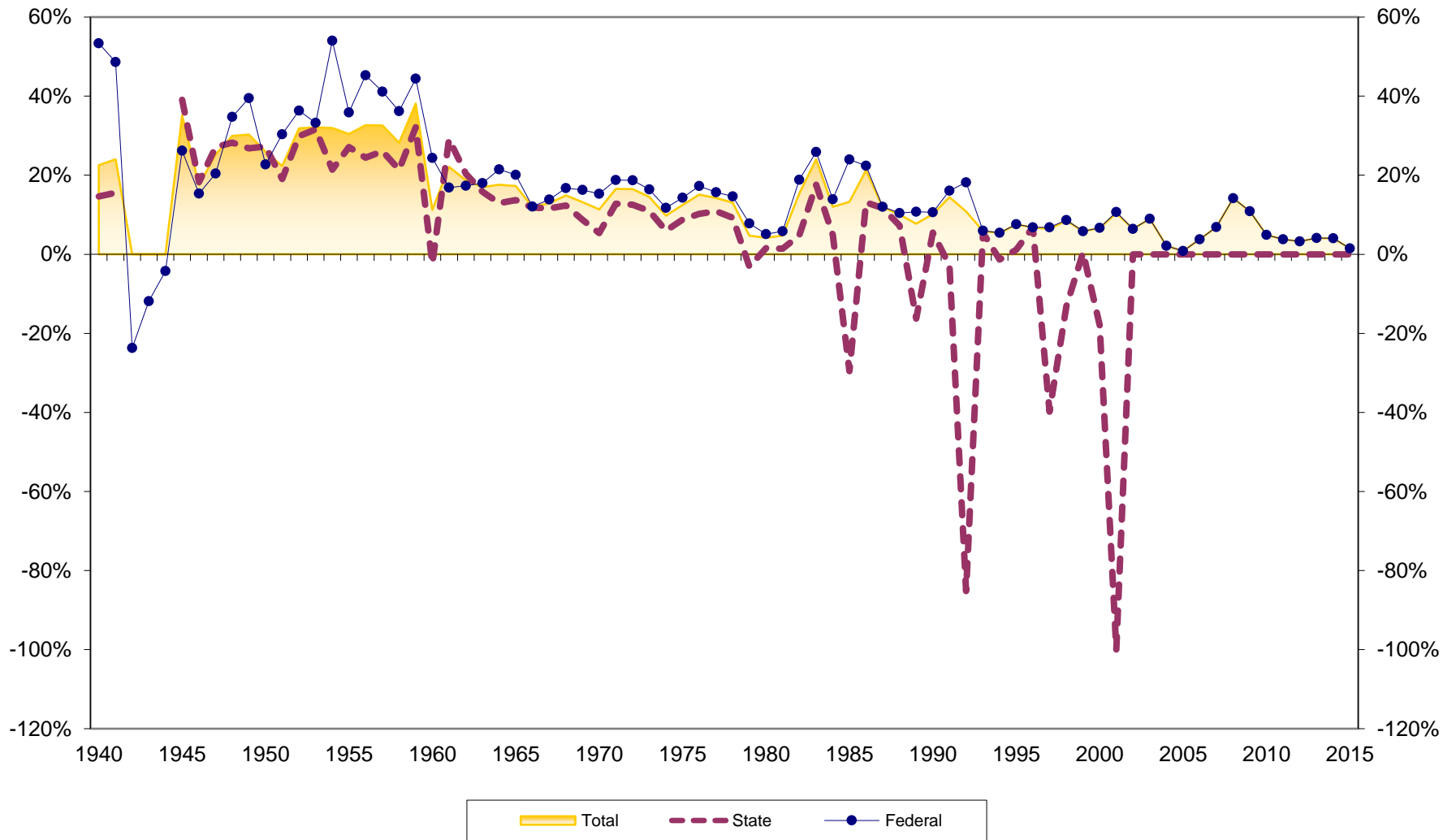
Membership Growth at Arkansas Credit Unions 1940-2015



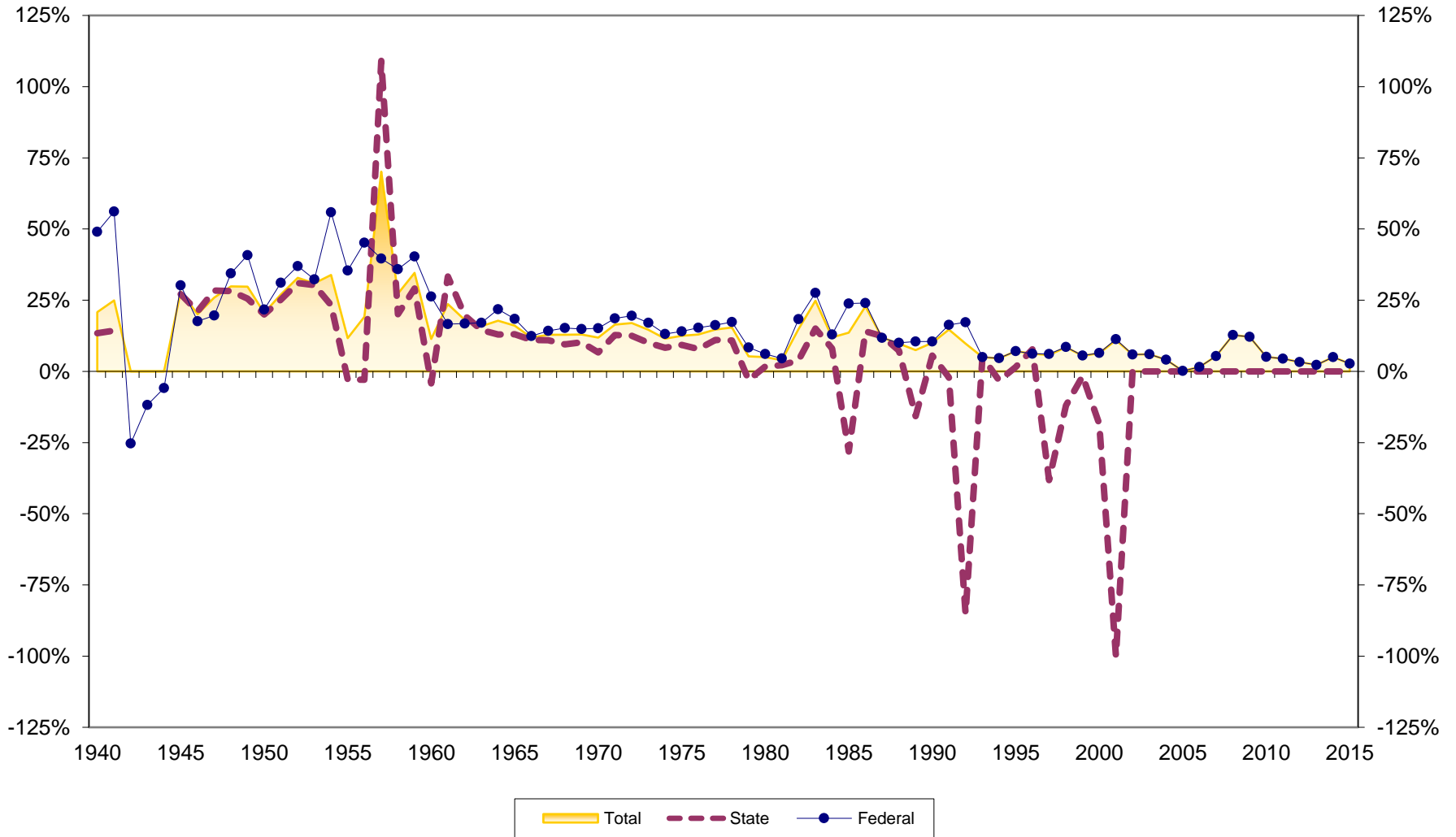
Arkansas Credit Union Assets (in \$Millions) 1939-2015



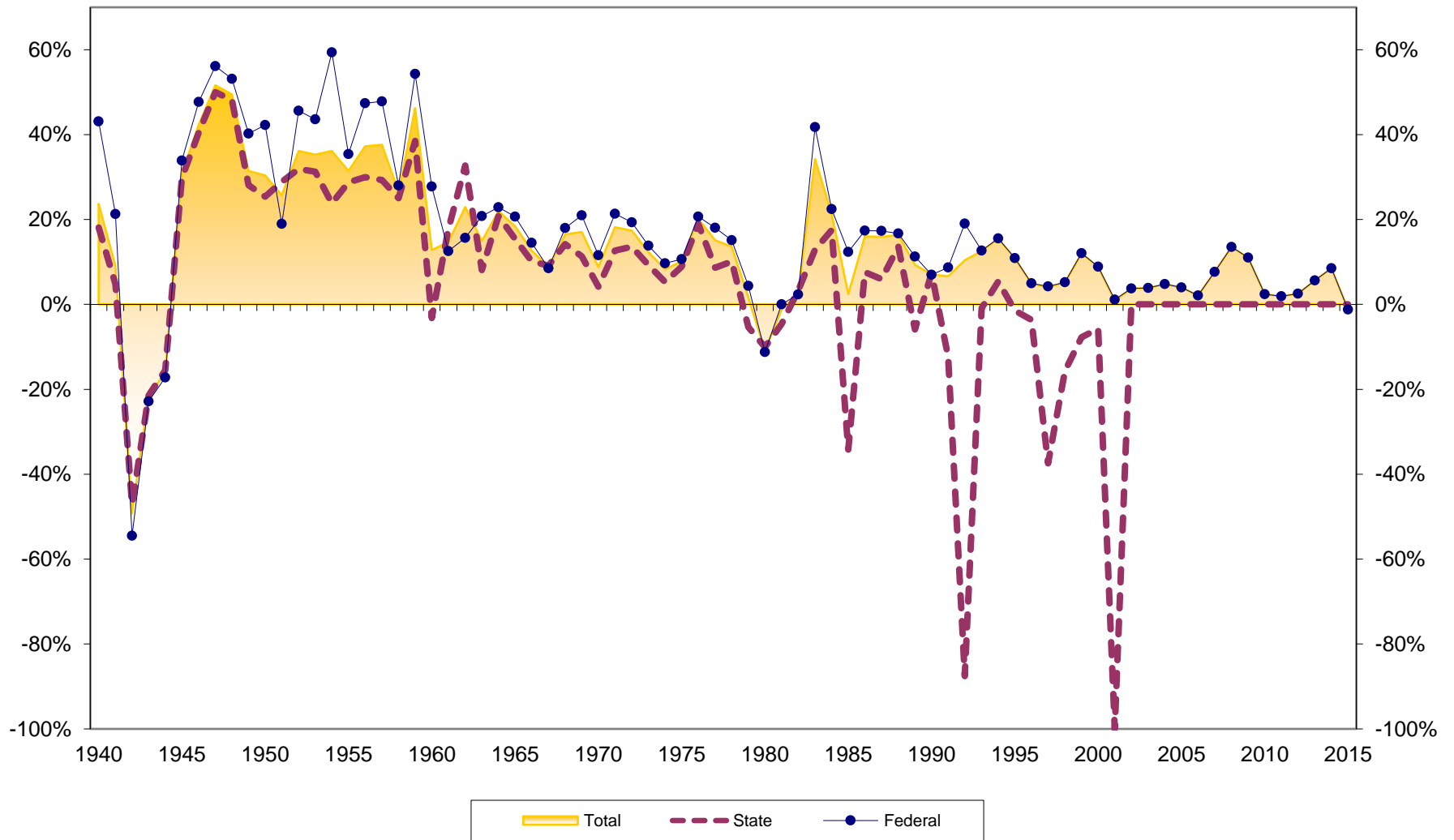
Asset Growth at Arkansas Credit Unions 1940-2015



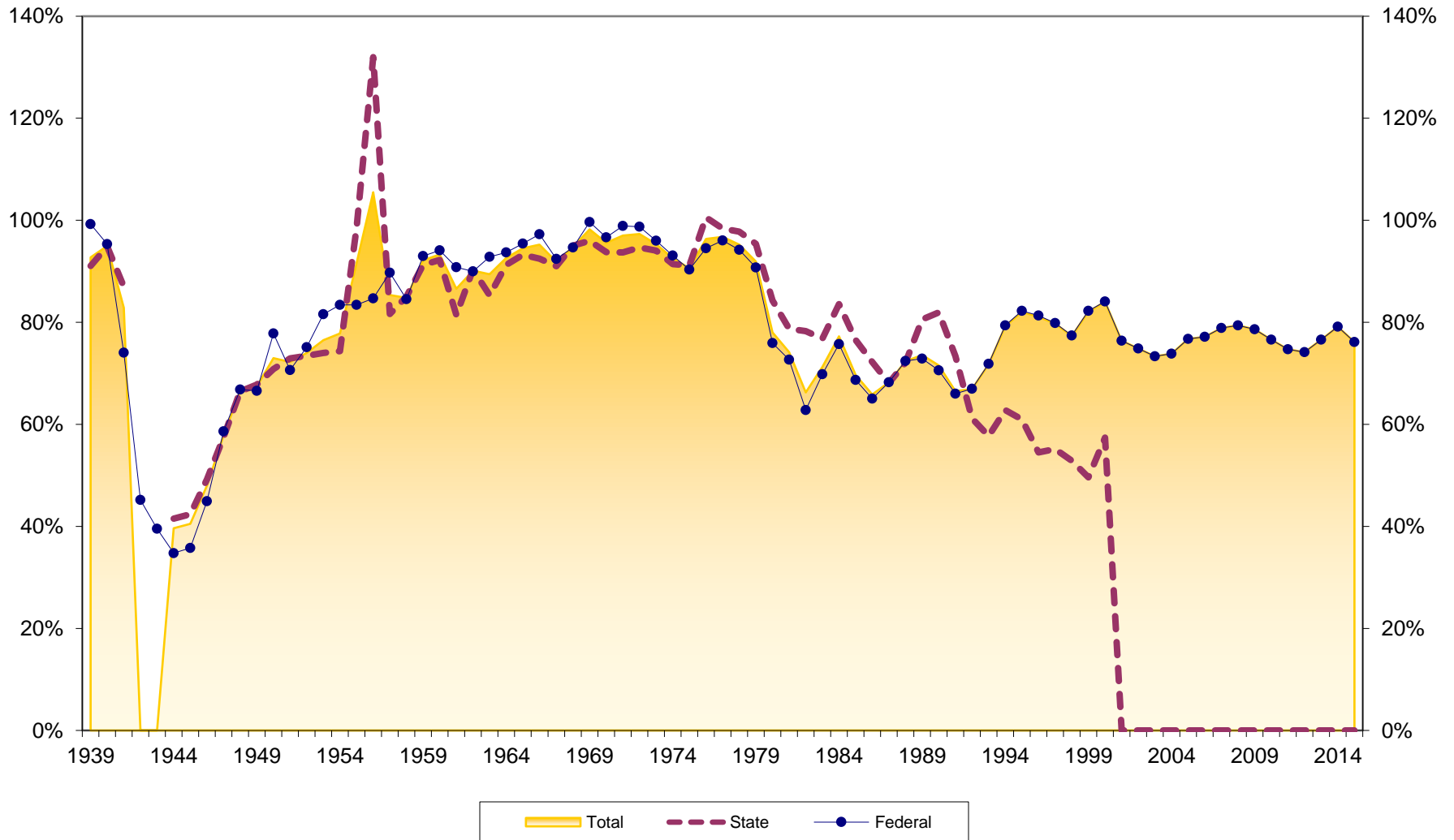
Savings Growth at Arkansas Credit Unions 1940-2015



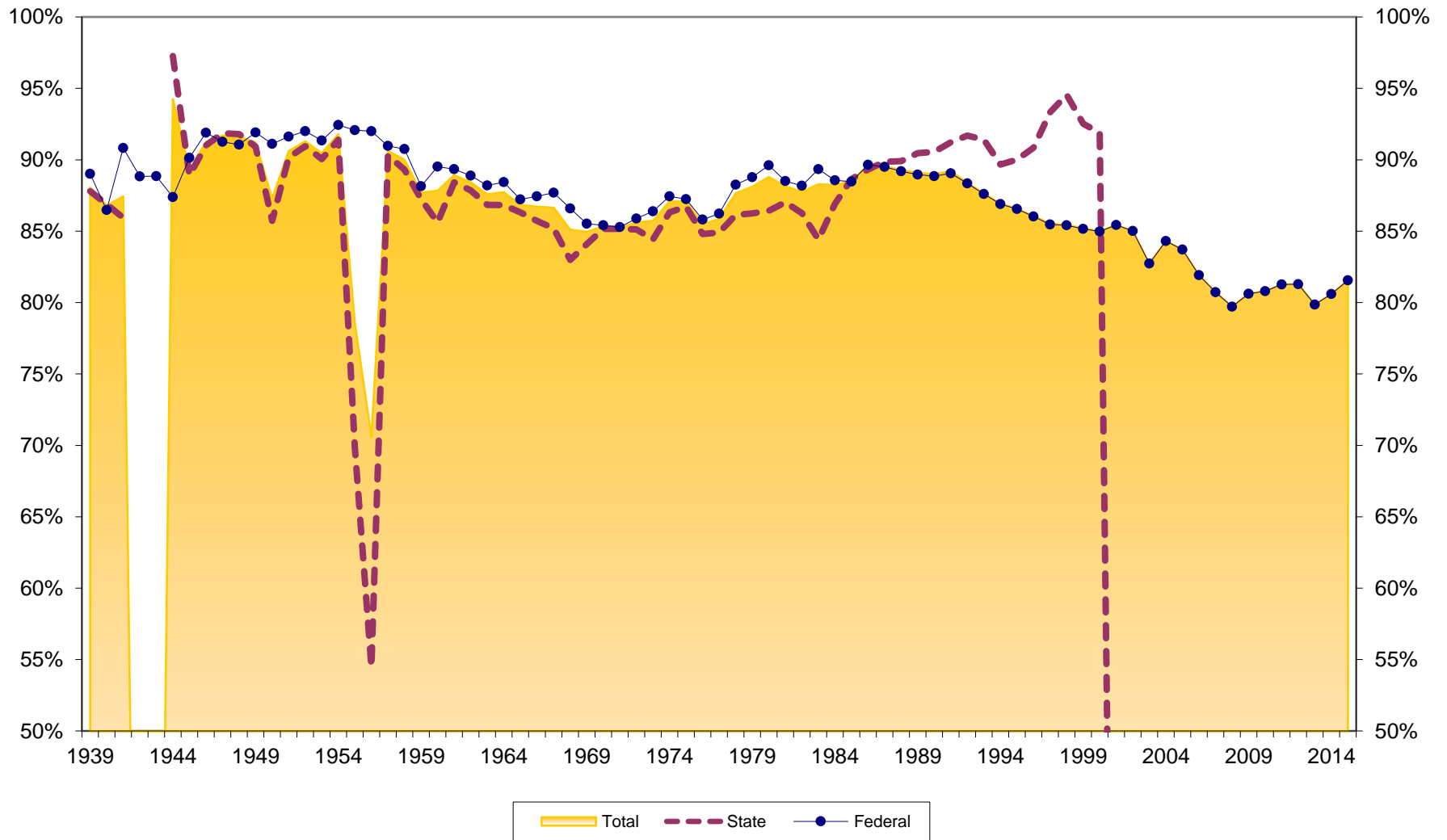
Loan Growth at Arkansas Credit Unions 1940-2015



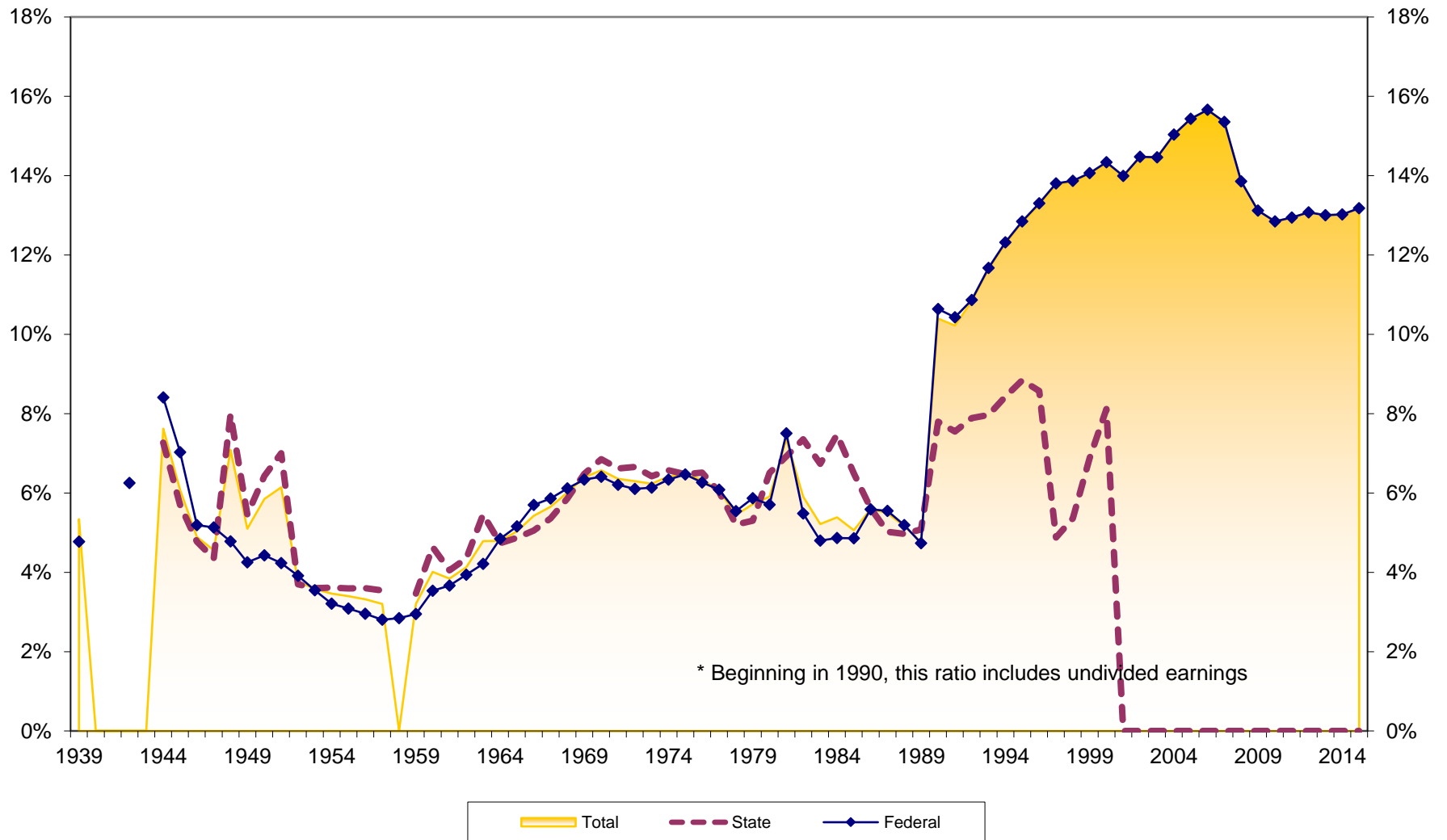
Loans to Savings Ratio at Arkansas Credit Unions 1939-2015



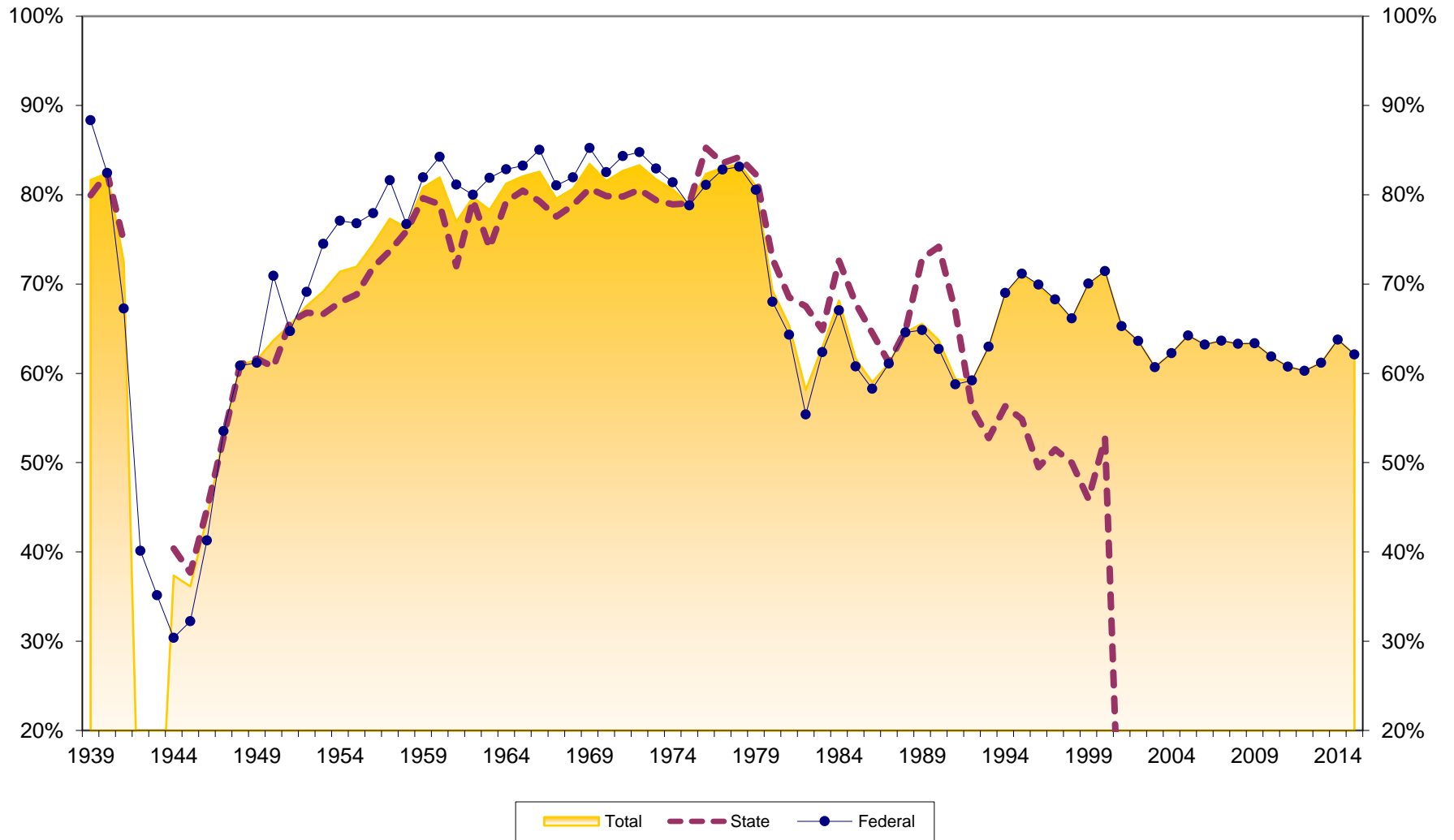
Savings to Assets at Arkansas Credit Unions 1939-2015



Reserves to Assets at Arkansas Credit Unions 1939-2015



Loans to Assets at Arkansas Credit Unions 1939-2015



Dollar Asset Growth at Arkansas Credit Unions 1940-2015

