

California Totals Statistics

Year	# of CUs	# of Memberships	Savings (\$)	Loans (\$)	Reserves (\$)*	Assets (\$)
1939	405	145,350	12,192,848	11,708,928	482,714	14,599,521
1940	445	101,770	23,692,757	15,149,858	0	19,114,143
1941	498	211,423	19,958,493	17,425,644	0	23,796,573
1942	508	199,172	0	10,233,838	0	0
1943	523	191,773	0	7,818,505	0	0
1944	442	184,969	22,313,274	7,761,778	1,487,572	25,910,483
1945	432	171,391	23,072,165	8,171,810	1,192,163	26,986,463
1946	451	191,411	27,509,068	14,523,890	0	32,198,135
1947	460	219,611	33,865,415	24,868,353	1,743,052	40,303,228
1948	500	254,587	42,844,966	36,400,859	2,899,436	50,661,902
1949	565	310,892	57,015,448	49,311,759	2,070,037	66,234,330
1950	603	367,706	74,974,405	69,407,481	2,739,099	87,709,572
1951	684	432,291	93,212,471	75,723,398	3,466,958	106,362,713
1952	795	512,203	123,434,422	105,701,509	4,427,088	141,837,583
1953	950	604,710	163,521,443	146,250,390	5,492,632	186,586,422
1954	1,096	702,630	213,745,747	184,529,217	7,211,453	236,327,103
1955	1,240	813,885	267,767,177	235,433,918	9,209,993	300,044,993
1956	1,374	936,849	328,078,558	287,653,679	11,891,460	370,156,789
1957	1,462	1,043,206	384,386,809	350,743,460	15,099,820	435,855,969
1958	1,522	1,150,652	451,641,829	393,567,000	0	510,358,664
1959	1,587	1,267,193	530,215,276	482,448,739	23,240,914	600,120,344
1960	1,616	1,360,998	604,195,726	579,618,345	28,124,577	688,608,412
1961	1,658	1,482,335	697,135,699	641,565,726	33,885,782	792,026,943
1962	1,659	1,602,941	797,206,675	747,656,793	40,249,931	908,167,051
1963	1,688	1,725,719	928,032,013	851,236,795	49,527,463	1,050,256,820
1964	1,725	1,891,196	1,067,599,055	985,449,363	58,631,281	1,212,552,092
1965	1,729	2,021,321	1,190,594,184	1,137,142,747	70,043,859	1,362,713,814
1966	1,802	2,199,382	1,302,744,034	1,286,827,854	82,388,989	1,500,439,452
1967	1,845	2,362,806	1,451,968,450	1,381,961,195	97,190,276	1,658,776,701
1968	1,842	2,498,241	1,607,863,272	1,580,771,661	111,533,134	1,850,854,780
1969	1,878	2,662,354	1,795,225,953	1,813,247,647	130,313,750	2,082,745,333
1970	1,880	2,794,679	2,026,784,858	1,968,555,219	150,857,017	2,359,517,729
1971	1,824	2,929,203	2,418,504,472	2,243,957,463	170,731,594	2,778,703,920
1972	1,822	3,119,750	2,850,969,000	2,577,360,000	191,754,000	3,259,061,000
1973	1,835	3,341,605	3,255,756,000	3,045,191,000	214,049,000	3,783,205,000
1974	1,820	3,594,023	3,708,248,000	3,494,359,000	238,845,000	4,335,174,000
1975	1,794	3,785,350	4,602,055,000	4,101,778,000	271,342,000	5,304,659,000
1976	1,764	4,185,502	5,552,749,000	5,072,883,000	310,110,000	6,421,964,000
1977	1,719	4,596,280	6,893,065,000	6,398,922,000	350,310,000	7,996,775,000
1978	1,661	5,098,332	7,958,368,000	7,785,008,000	383,767,000	9,381,735,000
1979	1,600	5,232,609	8,234,545,000	7,891,605,000	405,425,000	9,756,878,000
1980	1,534	5,645,817	8,859,105,000	7,270,105,000	431,564,000	10,102,433,000
1981	1,429	5,721,800	8,914,798,000	7,347,057,000	446,366,000	10,117,736,000
1982	1,322	5,784,543	9,983,124,000	7,131,831,000	464,966,000	11,064,567,000
1983	1,247	6,014,719	12,257,248,534	8,467,821,425	525,690,253	13,445,669,096
1984	1,189	6,000,942	13,829,063,404	10,537,422,974	625,284,433	15,213,667,972
1985	1,150	6,246,005	17,127,940,069	12,090,280,276	696,510,997	18,671,505,332
1986	1,111	6,634,633	21,105,410,470	14,174,293,914	819,344,719	22,910,418,175
1987	1,068	6,744,244	23,121,535,736	16,467,932,998	934,204,645	25,210,392,269
1988	1,018	7,304,668	25,170,299,734	18,866,723,595	1,216,731,158	27,525,448,676
1989	959	7,196,352	26,325,558,393	20,433,535,909	1,200,892,442	28,889,824,820
1990	912	7,357,217	28,731,580,838	21,533,287,396	2,511,487,635	31,597,445,308
1991	877	7,312,892	31,457,033,362	21,430,977,037	2,812,599,967	34,642,236,444
1992	846	7,320,067	34,895,177,981	21,486,645,059	3,288,507,043	38,596,402,760
1993	806	7,435,371	36,236,898,507	22,742,781,047	3,767,437,974	40,432,284,467
1994	787	7,512,760	37,305,199,790	25,480,571,051	4,087,137,209	42,148,542,982
1995	767	7,598,325	39,413,883,674	27,349,039,015	4,580,826,437	44,479,315,773
1996	737	7,738,894	41,201,621,865	29,629,305,274	5,003,090,124	46,694,436,082
1997	723	7,929,156	43,959,869,940	32,133,734,837	5,481,305,884	49,942,435,743
1998	704	8,202,668	49,375,863,807	34,327,026,063	5,982,046,702	55,925,017,752
1999	685	8,495,705	52,793,562,964	38,982,212,100	6,399,088,407	60,503,377,329
2000	652	8,787,554	57,750,923,596	44,659,731,805	7,157,230,903	66,179,768,551
2001	626	9,088,787	67,715,700,505	49,136,811,081	7,989,986,620	77,004,554,615
2002	610	9,360,178	76,340,168,809	52,756,848,652	9,027,895,788	87,032,799,728
2003	589	9,534,788	83,901,207,611	58,110,616,628	9,877,135,835	95,935,022,447
2004	574	9,690,378	89,082,890,008	65,704,890,365	10,801,082,652	103,058,369,444
2005	554	9,832,989	94,505,106,793	75,670,572,083	11,675,753,492	111,045,956,279
2006	537	9,936,707	98,133,583,362	82,777,845,444	12,622,530,765	116,044,134,775
2007	509	10,098,563	101,015,344,874	86,603,137,475	13,162,039,722	120,606,757,194
2008	489	10,097,952	103,557,740,363	87,215,989,895	12,909,983,059	123,694,976,696
2009	457	9,894,820	106,653,556,564	79,841,494,730	11,530,875,572	126,686,283,061
2010	440	9,519,476	106,794,693,544	72,679,684,607	12,013,606,010	124,234,715,314
2011	423	9,705,883	111,733,428,751	71,650,365,297	13,233,170,962	129,484,194,683
2012	403	9,696,361	117,056,276,844	72,357,802,590	14,460,634,257	136,032,347,022
2013	381	9,808,583	121,213,331,392	76,981,892,882	15,192,117,996	141,535,753,329
2014	364	10,083,117	127,775,875,195	87,408,003,952	16,747,027,825	150,676,424,561
2015	364	10,083,117	127,775,875,195	87,408,003,952	16,747,027,825	150,676,424,561
2016	347	10,464,351	137,920,744,093	99,406,897,270	52,323,171,337	162,742,583,862

* Beginning in 1990, Reserves includes undivided earnings.

California State Statistics

Year	# of CUs	# of Memberships	Savings (\$)	Loans (\$)	Reserves (\$)*	Assets (\$)
1939	184	74,988	7,719,993	7,684,550	367,551	9,656,013
1940	187	8,320	16,821,757	9,053,858		11,509,143
1941	203	89,496	10,257,886	9,900,644		13,167,573
1942	207	83,095		6,043,789		
1943	233	77,919		4,407,505		
1944	159	77,000	9,304,108	4,315,861	1,041,104	11,730,952
1945	158	75,000	10,047,717	4,967,971	714,750	12,885,754
1946	172	85,000	12,540,699	8,731,330		15,932,996
1947	168	95,541	15,571,399	13,997,370	1,122,896	20,127,233
1948	188	106,530	19,428,360	19,291,708	2,109,622	24,845,172
1949	215	133,551	25,031,334	24,584,056	1,049,627	31,054,896
1950	221	154,952	31,865,277	32,853,474	1,340,878	39,217,804
1951	258	176,117	37,933,400	35,826,713	1,648,742	45,648,355
1952	295	203,842	47,635,813	47,716,731	2,109,457	57,743,138
1953	365	238,834	62,868,313	63,724,441	2,463,580	74,683,147
1954	424	277,645	83,934,157	81,862,221	3,281,790	92,965,681
1955	481	324,809	105,000,000	100,000,000	4,100,000	119,182,233
1956	536	373,619	126,261,633	120,674,796	5,208,431	146,024,400
1957	571	422,816	149,800,585	147,604,936	6,559,806	172,953,868
1958	605	477,782	179,681,691	168,669,516		206,537,213
1959	619	535,994	229,487,704	222,780,365	10,921,150	261,137,905
1960	602	573,548	264,030,438	266,373,754	13,098,468	304,885,486
1961	602	630,121	303,307,854	294,163,870	15,873,209	350,725,389
1962	578	675,287	343,890,197	337,687,657	18,296,298	396,342,809
1963	582	709,911	394,586,679	377,939,984	22,963,114	448,962,589
1964	597	788,816	449,214,055	435,299,363	26,354,281	513,302,092
1965	587	828,389	496,601,184	500,688,747	31,223,859	577,006,814
1966	617	889,636	549,354,034	568,781,854	36,066,989	639,154,452
1967	636	955,166	617,575,450	613,189,195	42,850,276	712,320,701
1968	617	1,006,190	684,727,272	696,890,661	48,713,134	795,757,780
1969	623	1,077,259	760,476,953	788,419,647	56,526,750	891,033,333
1970	631	1,139,372	845,620,858	858,839,219	64,779,017	998,763,729
1971	599	1,182,550	981,552,472	976,271,463	75,028,594	1,152,209,920
1972	590	1,248,463	1,135,693,000	1,105,569,000	84,266,000	1,330,711,000
1973	596	1,296,105	1,268,618,000	1,287,143,000	92,792,000	1,511,003,000
1974	591	1,312,193	1,358,180,000	1,396,985,000	103,271,000	1,615,949,000
1975	587	1,341,288	1,641,167,000	1,621,089,000	112,602,000	1,935,507,000
1976	576	1,503,437	1,979,573,000	1,991,402,000	126,307,000	2,332,994,000
1977	556	1,601,603	2,430,288,000	2,453,163,000	139,886,000	2,851,789,000
1978	519	1,678,279	2,743,109,000	2,903,982,000	163,190,000	3,261,776,000
1979	493	1,825,160	2,877,833,000	3,065,700,000	176,176,000	3,535,214,000
1980	478	1,973,513	3,189,679,000	2,977,642,000	202,503,000	3,798,533,000
1981	450	1,975,104	3,221,836,000	3,011,722,000	192,645,000	3,794,317,000
1982	417	1,921,032	3,351,392,000	2,710,921,000	189,958,000	3,788,929,000
1983	397	2,040,746	4,258,248,534	3,264,821,425	216,290,253	4,761,669,096
1984	376	2,010,832	4,885,542,000	4,088,618,000	246,224,000	5,439,894,000
1985	360	2,074,771	5,854,804,000	4,568,946,000	226,659,000	6,384,522,000
1986	345	2,327,473	7,094,186,975	5,284,878,425	270,021,990	7,698,995,952
1987	326	2,140,276	7,439,507,048	5,801,524,101	287,234,581	8,108,148,488
1988	306	2,244,916	8,151,267,715	6,599,921,928	377,830,106	8,895,831,526
1989	275	2,313,126	8,467,293,055	6,974,235,023	353,930,086	9,273,976,469
1990	262	2,358,936	9,402,875,928	7,561,753,558	799,790,526	10,325,717,221
1991	252	2,332,399	10,355,944,241	7,571,643,816	901,749,730	11,370,343,251
1992	242	2,385,573	11,600,351,430	7,716,439,940	1,058,938,650	12,758,760,177
1993	224	2,468,953	12,227,138,123	8,252,600,471	1,240,158,974	13,560,348,317
1994	211	2,433,423	12,218,182,878	8,992,987,691	1,285,392,157	13,691,744,308
1995	203	2,426,237	12,569,894,129	9,335,185,788	1,408,559,984	14,122,767,797
1996	193	2,455,550	12,995,808,054	9,861,280,868	1,529,542,613	14,648,599,122
1997	193	2,577,973	14,080,775,433	10,941,090,679	1,705,634,271	15,944,333,655
1998	198	3,058,407	18,124,120,683	13,442,463,968	2,119,205,093	20,532,005,178
1999	210	3,831,651	23,731,323,333	18,868,152,306	2,768,461,824	27,217,781,226
2000	215	4,567,307	31,243,381,347	24,863,533,959	3,693,563,571	35,812,794,602
2001	218	5,035,301	38,454,705,219	28,804,705,264	4,389,907,599	43,740,157,832
2002	223	5,384,212	44,255,257,098	32,262,835,957	5,098,188,290	50,535,077,047
2003	216	5,534,401	48,543,683,656	35,612,184,709	5,631,283,082	55,603,176,830
2004	212	5,678,917	51,946,370,556	40,218,756,524	6,176,805,808	60,242,669,166
2005	207	5,843,985	55,509,707,868	46,091,451,755	6,729,689,210	65,426,183,978
2006	203	5,947,761	58,275,679,184	50,308,536,097	7,338,826,350	69,091,279,384
2007	196	6,068,564	59,691,685,093	51,876,709,663	7,614,414,190	71,423,521,093
2008	186	6,076,559	60,531,691,175	52,035,686,040	7,429,659,662	72,640,903,945
2009	170	5,897,062	61,569,911,856	47,065,713,829	6,489,797,648	73,494,167,412
2010	163	5,606,674	61,541,224,682	42,763,417,224	6,775,514,659	72,011,464,170
2011	158	5,576,275	62,943,709,928	40,594,216,521	7,381,982,523	73,077,205,524
2012	152	5,534,296	65,997,714,802	40,304,316,404	8,081,210,571	76,663,026,504
2013	145	5,576,149	68,388,646,823	43,011,255,898	8,479,489,985	79,564,317,798
2014	145	5,849,081	72,872,172,015	49,819,874,663	9,470,236,909	85,654,344,095
2015	143	6,143,792	79,777,639,972	57,282,050,237	10,198,324,304	93,664,417,770
2016	137	6,455,965	87,249,051,153	65,598,133,289	10,987,369,783	102,407,041,412

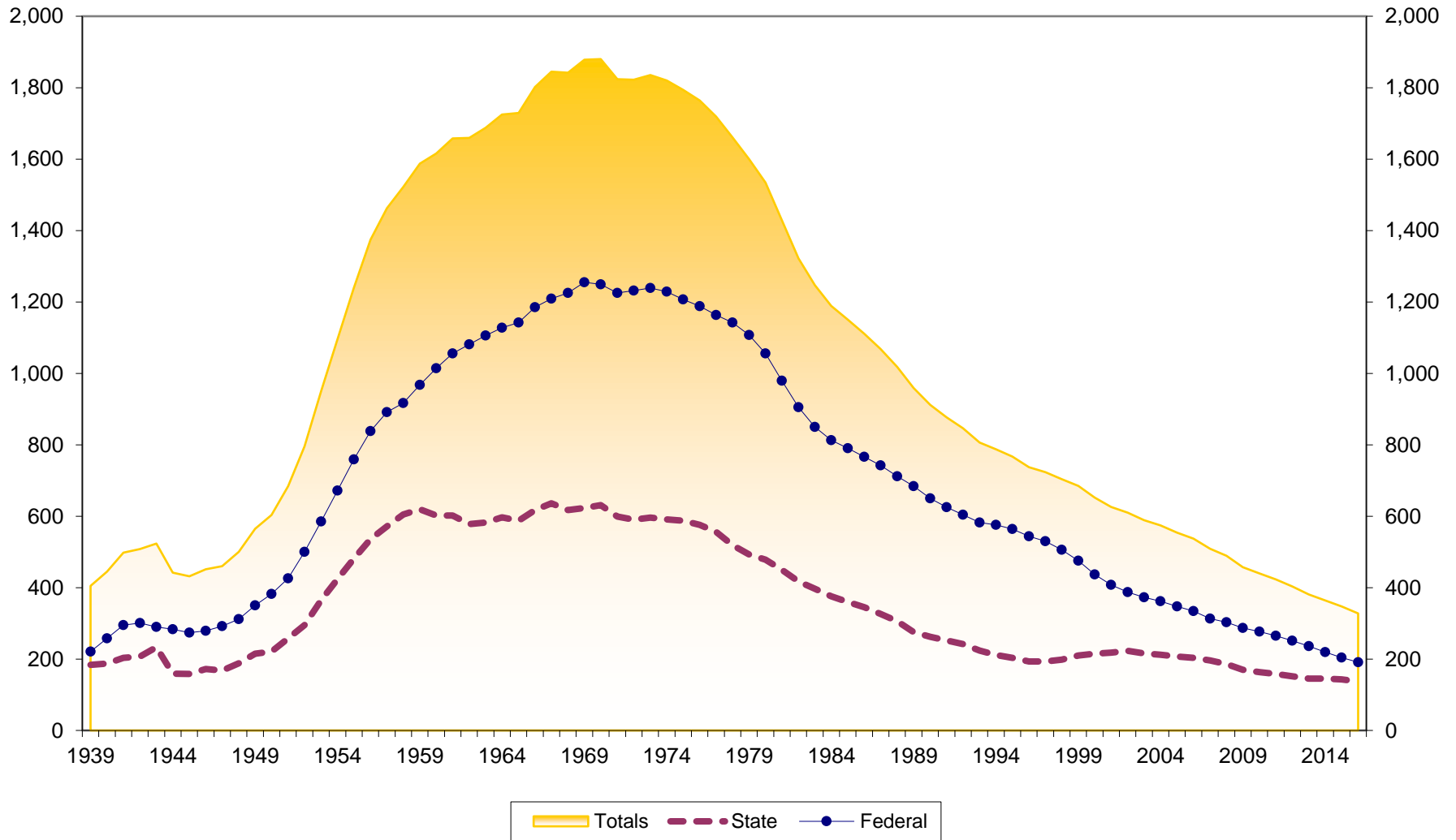
* Beginning in 1990, Reserves includes undivided earnings.

California Federal Statistics

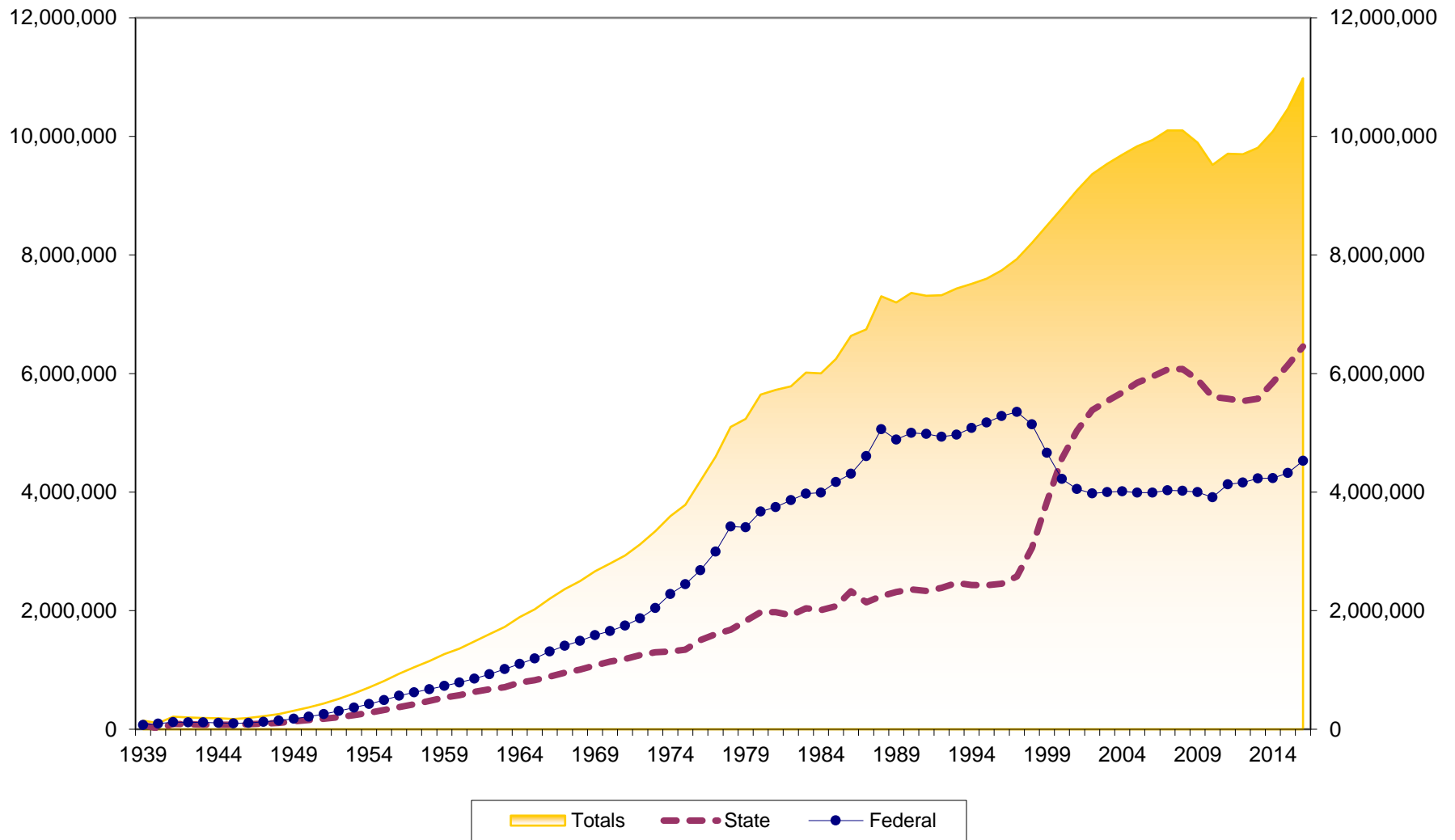
Year	# of CUs	# of Memberships	Savings (\$)	Loans (\$)	Reserves (\$)*	Assets (\$)
1939	221	70,362	4,472,855	4,024,378	115,163	4,943,508
1940	258	93,450	6,871,000	6,096,000		7,605,000
1941	295	121,927	9,700,607	7,525,000		10,629,000
1942	301	116,077	10,334,838	4,190,049	364,803	11,354,045
1943	290	113,854	11,387,500	3,411,000		12,440,000
1944	283	107,969	13,009,166	3,445,917	446,468	14,179,531
1945	274	96,391	13,024,448	3,203,839	477,413	14,100,709
1946	279	106,411	14,968,369	5,792,560		16,265,139
1947	292	124,070	18,294,016	10,870,983	620,156	20,175,995
1948	312	148,057	23,416,606	17,109,151	789,814	25,816,730
1949	350	177,341	31,984,114	24,727,703	1,020,410	35,179,434
1950	382	212,754	43,109,128	36,554,007	1,398,221	48,491,768
1951	426	256,174	55,279,071	39,896,685	1,818,216	60,714,358
1952	500	308,361	75,798,609	57,984,778	2,317,631	84,094,445
1953	585	365,876	100,653,130	82,525,949	3,029,052	111,903,275
1954	672	424,985	129,811,590	102,666,996	3,929,663	143,361,422
1955	759	489,076	162,767,177	135,433,918	5,109,993	180,862,760
1956	838	563,230	201,816,925	166,978,883	6,683,029	224,132,389
1957	891	620,390	234,586,224	203,138,524	8,540,014	262,902,101
1958	917	672,870	271,960,138	224,897,484	10,542,009	303,821,451
1959	968	731,199	300,727,572	259,668,374	12,319,764	338,982,439
1960	1,014	787,450	340,165,288	313,244,591	15,026,109	383,722,926
1961	1,056	852,214	393,827,845	347,401,856	18,012,573	441,301,554
1962	1,081	927,654	453,316,478	409,969,136	21,953,633	511,824,242
1963	1,106	1,015,808	533,445,334	473,296,811	26,564,349	601,294,231
1964	1,128	1,102,380	618,385,000	550,150,000	32,277,000	699,250,000
1965	1,142	1,192,932	693,993,000	636,454,000	38,820,000	785,707,000
1966	1,185	1,309,746	753,390,000	718,046,000	46,322,000	861,285,000
1967	1,209	1,407,640	834,393,000	768,772,000	54,340,000	946,456,000
1968	1,225	1,492,051	923,136,000	883,881,000	62,820,000	1,055,097,000
1969	1,255	1,585,095	1,034,749,000	1,024,828,000	73,787,000	1,191,712,000
1970	1,249	1,655,307	1,181,164,000	1,109,716,000	86,078,000	1,360,754,000
1971	1,225	1,746,653	1,436,952,000	1,267,686,000	95,703,000	1,626,494,000
1972	1,232	1,871,287	1,715,276,000	1,471,791,000	107,488,000	1,928,350,000
1973	1,239	2,045,500	1,987,138,000	1,758,048,000	121,257,000	2,272,202,000
1974	1,229	2,281,830	2,350,068,000	2,097,374,000	135,574,000	2,719,225,000
1975	1,207	2,444,062	2,960,888,000	2,480,689,000	158,740,000	3,369,152,000
1976	1,188	2,682,065	3,573,176,000	3,081,481,000	183,803,000	4,088,970,000
1977	1,163	2,994,677	4,462,777,000	3,945,759,000	210,424,000	5,144,986,000
1978	1,142	3,420,053	5,215,259,000	4,881,026,000	220,577,000	6,119,959,000
1979	1,107	3,407,449	5,356,712,000	4,825,905,000	229,249,000	6,221,664,000
1980	1,056	3,672,304	5,669,426,000	4,292,463,000	229,061,000	6,303,900,000
1981	979	3,746,696	5,692,962,000	4,335,335,000	253,721,000	6,323,419,000
1982	905	3,863,511	6,631,732,000	4,420,910,000	275,008,000	7,275,638,000
1983	850	3,973,973	7,999,000,000	5,203,000,000	309,400,000	8,684,000,000
1984	813	3,990,110	8,943,521,404	6,448,804,974	379,060,433	9,773,773,972
1985	790	4,171,234	11,273,136,069	7,521,334,276	469,851,997	12,286,983,332
1986	766	4,307,160	14,011,223,495	8,889,415,489	549,322,729	15,211,422,223
1987	742	4,603,968	15,682,028,688	10,666,408,897	646,970,064	17,102,243,781
1988	712	5,059,752	17,019,032,019	12,266,801,667	838,901,052	18,629,617,150
1989	684	4,883,226	17,858,665,338	13,459,300,886	846,962,356	19,615,848,351
1990	650	4,998,281	19,328,704,910	13,971,533,838	1,711,697,109	21,271,728,087
1991	625	4,980,493	21,101,089,121	13,859,333,221	1,910,850,237	23,271,893,193
1992	604	4,934,494	23,294,826,551	13,770,205,119	2,229,568,393	25,837,642,583
1993	582	4,966,418	24,009,760,384	14,490,180,576	2,527,279,000	26,871,936,150
1994	576	5,079,337	25,087,016,912	16,487,583,360	2,801,745,052	28,456,798,674
1995	564	5,172,088	26,843,989,545	18,013,853,227	3,172,266,453	30,356,547,976
1996	544	5,283,344	28,205,813,811	19,768,024,406	3,473,547,511	32,045,836,960
1997	530	5,351,183	29,879,094,507	21,192,644,158	3,775,671,613	33,998,102,088
1998	506	5,144,261	31,251,743,124	20,884,562,095	3,862,841,609	35,393,012,574
1999	475	4,664,054	29,062,239,631	20,114,059,794	3,630,626,583	33,285,596,103
2000	437	4,220,247	26,507,542,249	19,796,197,846	3,463,667,332	30,366,973,949
2001	408	4,053,486	29,260,950,286	20,332,105,817	3,600,079,021	33,264,396,783
2002	387	3,975,966	32,084,911,711	20,494,012,695	3,929,707,498	36,497,722,681
2003	373	4,000,387	35,357,523,955	22,498,431,919	4,245,852,753	40,331,845,617
2004	362	4,011,461	37,136,519,452	25,486,133,841	4,624,276,844	42,815,700,278
2005	347	3,989,004	38,995,398,925	29,579,120,328	4,946,064,282	45,619,772,301
2006	334	3,988,946	39,857,904,178	32,469,309,347	5,283,704,415	46,952,855,391
2007	313	4,029,999	41,323,659,781	34,726,427,812	5,547,625,532	49,183,236,101
2008	303	4,021,393	43,026,049,188	35,180,303,855	5,480,323,397	51,054,072,751
2009	287	3,997,758	45,083,644,708	32,775,780,901	5,041,077,924	53,192,115,649
2010	277	3,912,802	45,253,468,862	29,916,267,383	5,238,091,351	52,223,251,144
2011	265	4,129,608	48,789,718,823	31,056,148,776	5,851,188,439	56,406,989,159
2012	251	4,162,065	51,058,562,042	32,053,486,186	6,379,423,686	59,369,320,518
2013	236	4,232,434	52,824,684,569	33,970,636,984	6,712,628,011	61,971,435,531
2014	219	4,234,036	54,903,703,180	37,588,129,289	7,276,790,916	65,022,080,466
2015	204	4,320,559	58,143,104,121	42,124,847,033	42,124,847,033	69,078,166,092
2016	191	4,525,485	63,077,280,603	47,089,719,014	8,131,310,830	74,323,070,762

* Beginning in 1990, Reserves includes undivided earnings.

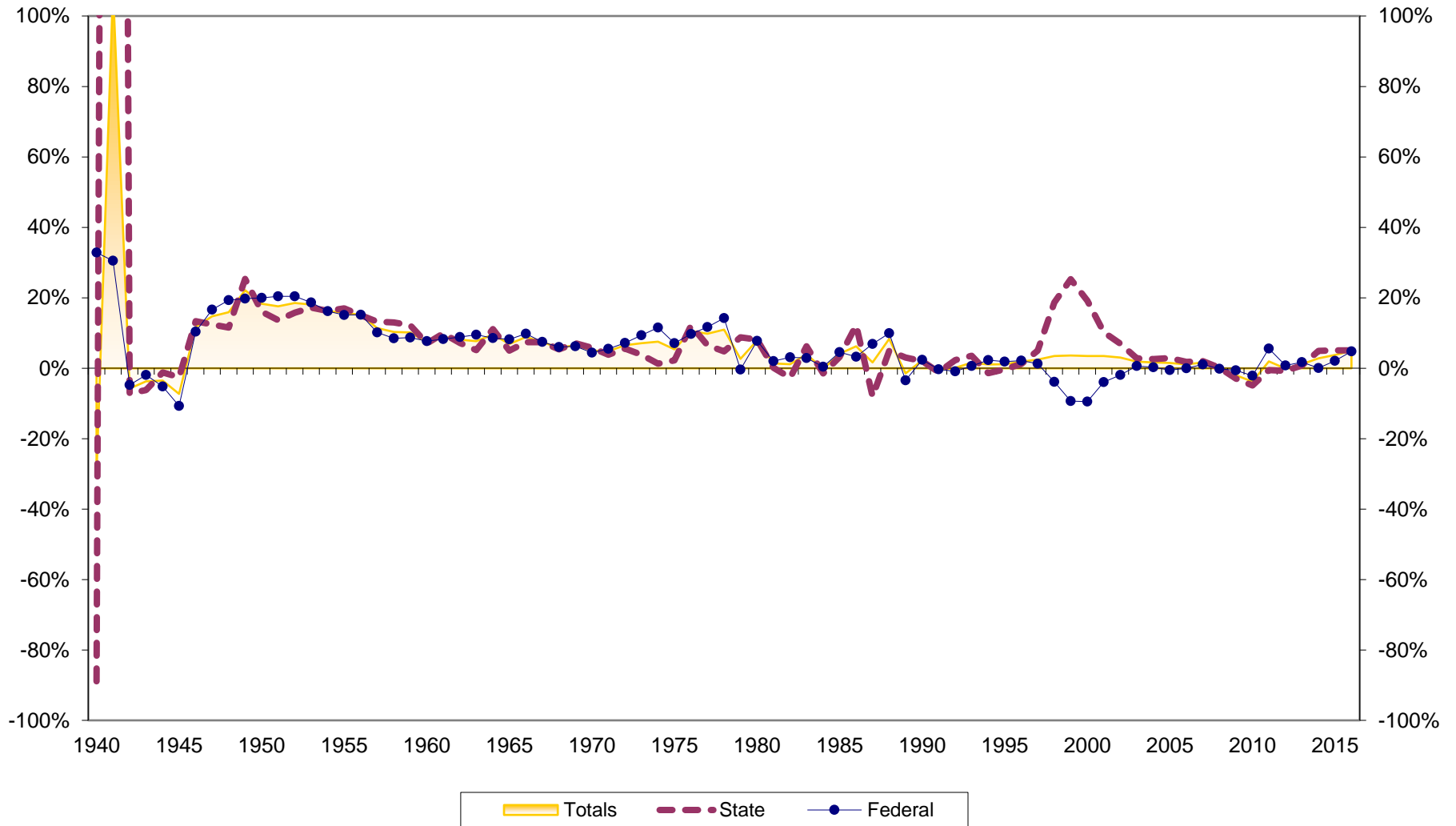
Number of California Credit Unions 1939-2016



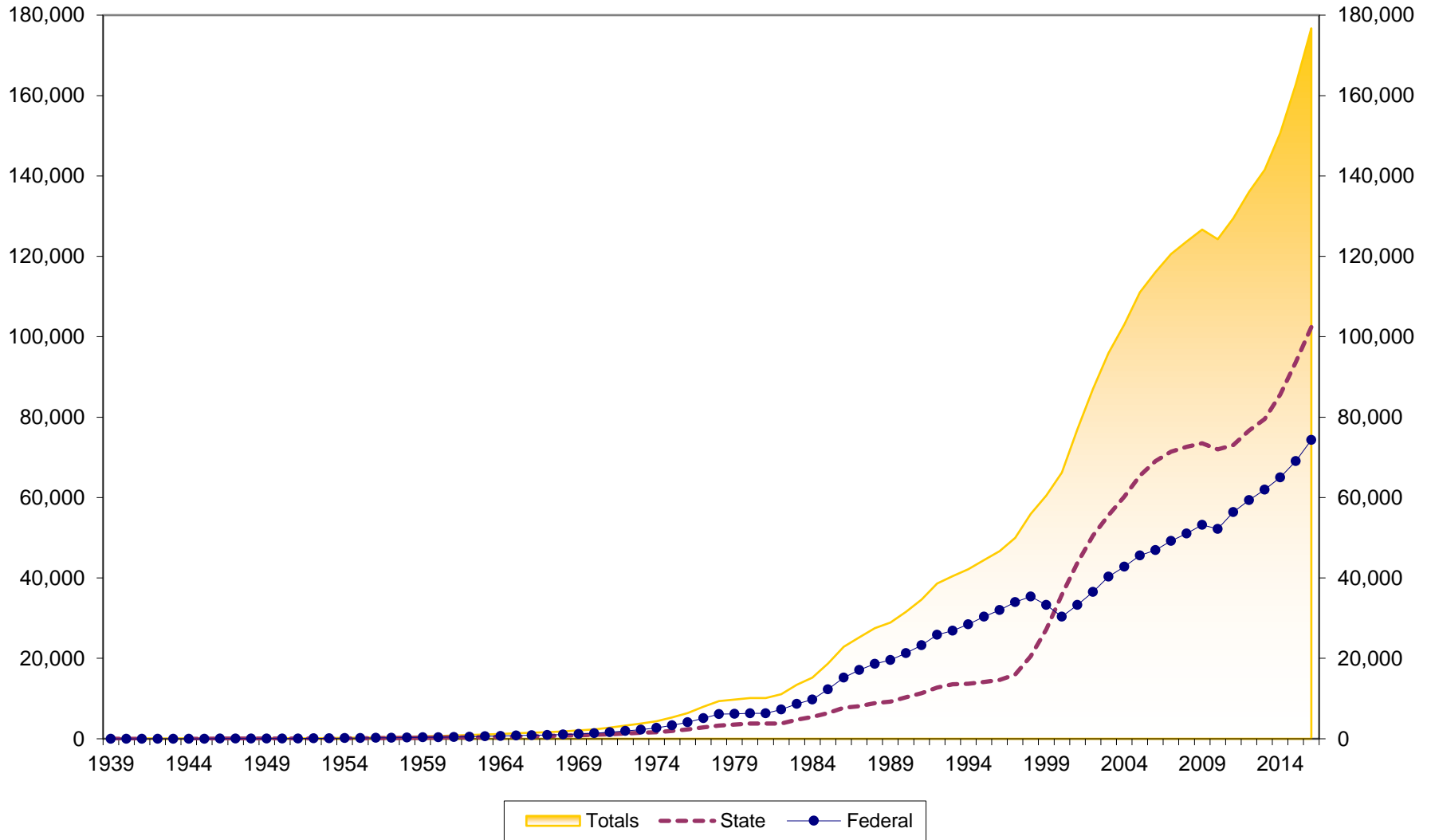
Number of Memberships at California CUs 1939-2016



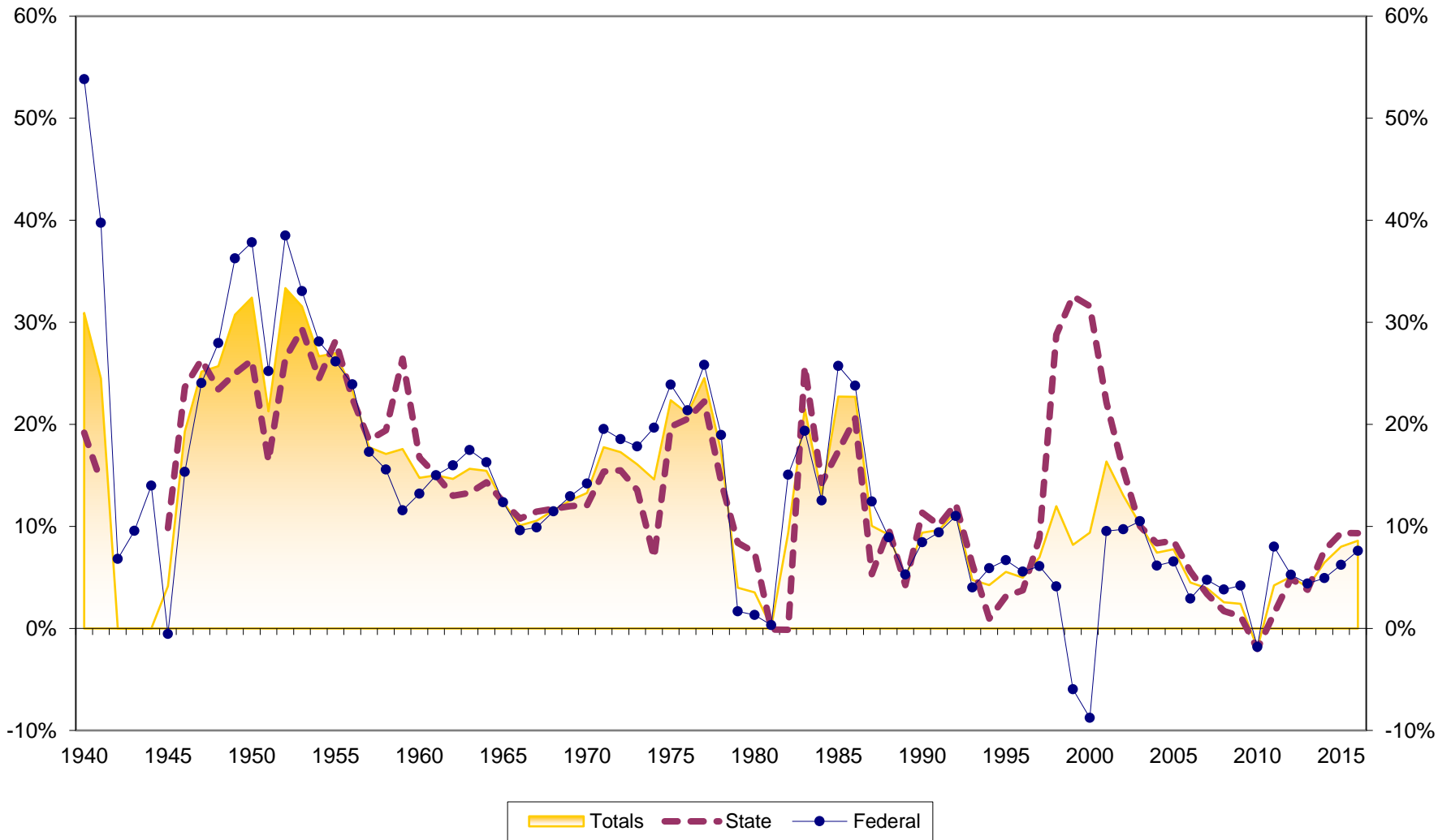
Membership Growth at California Credit Unions 1940-2016



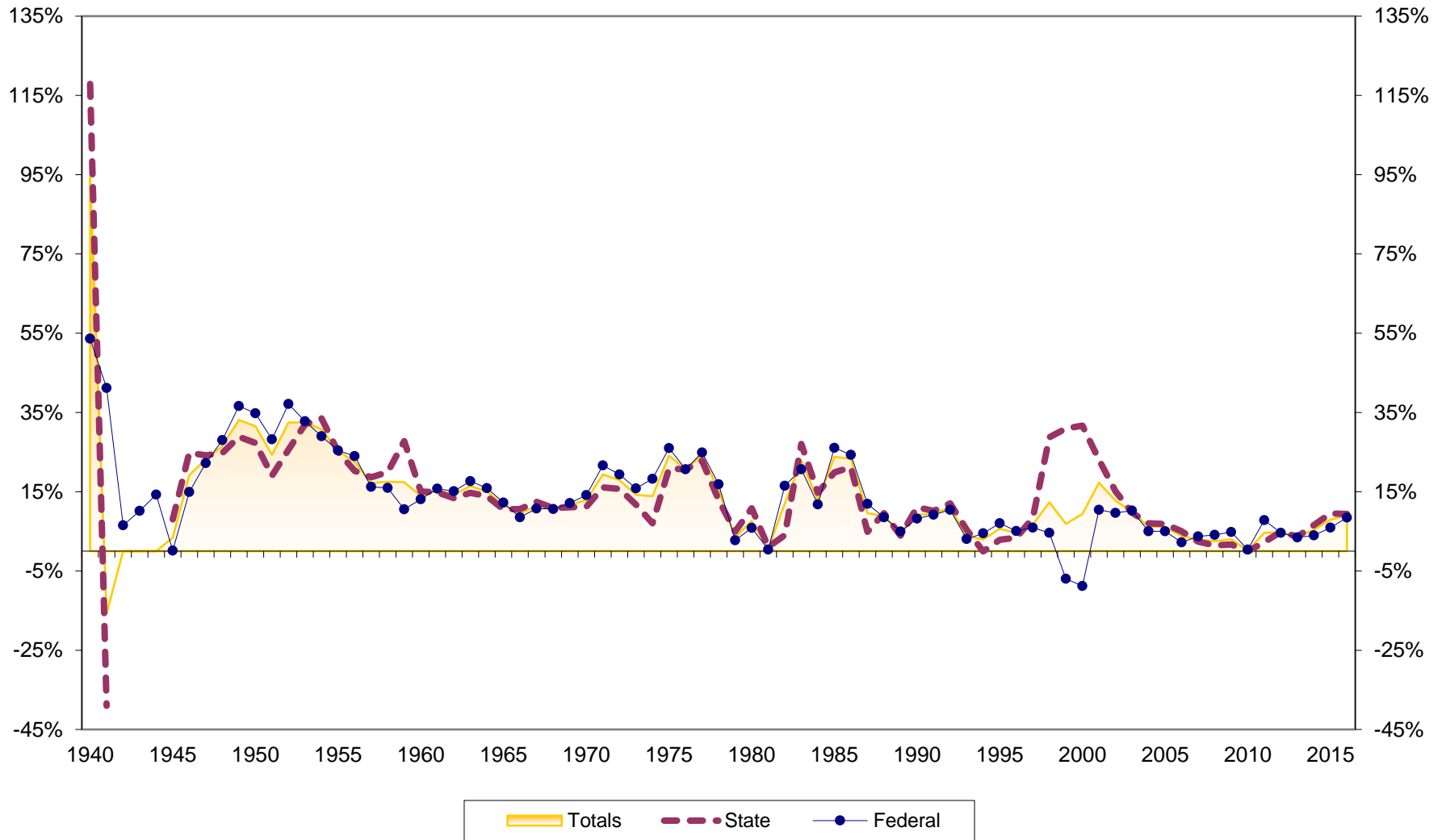
California Credit Union Assets (in \$Millions) 1939-2016



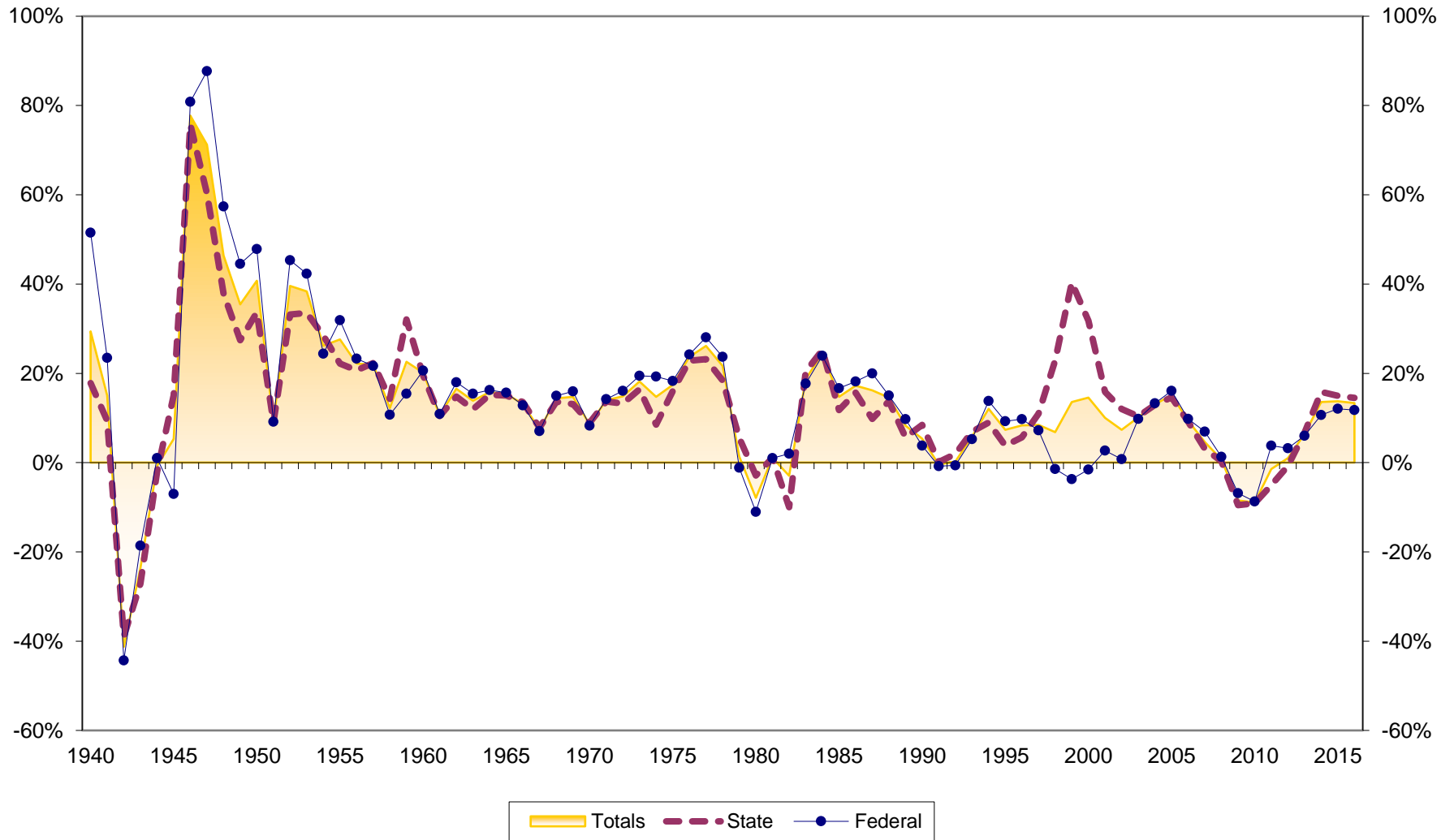
Asset Growth at California Credit Unions 1940-2016



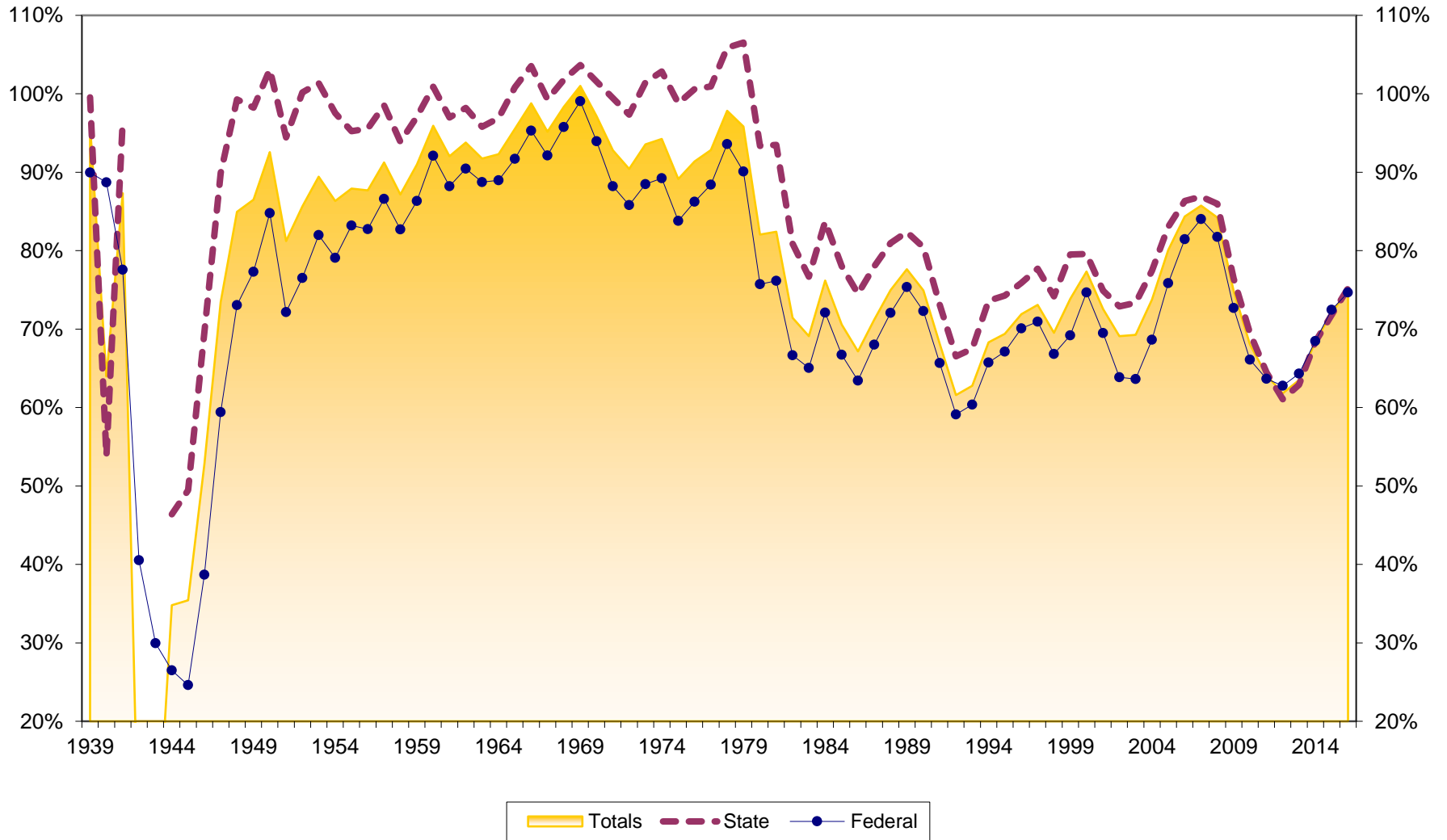
Savings Growth at California Credit Unions 1940-2016



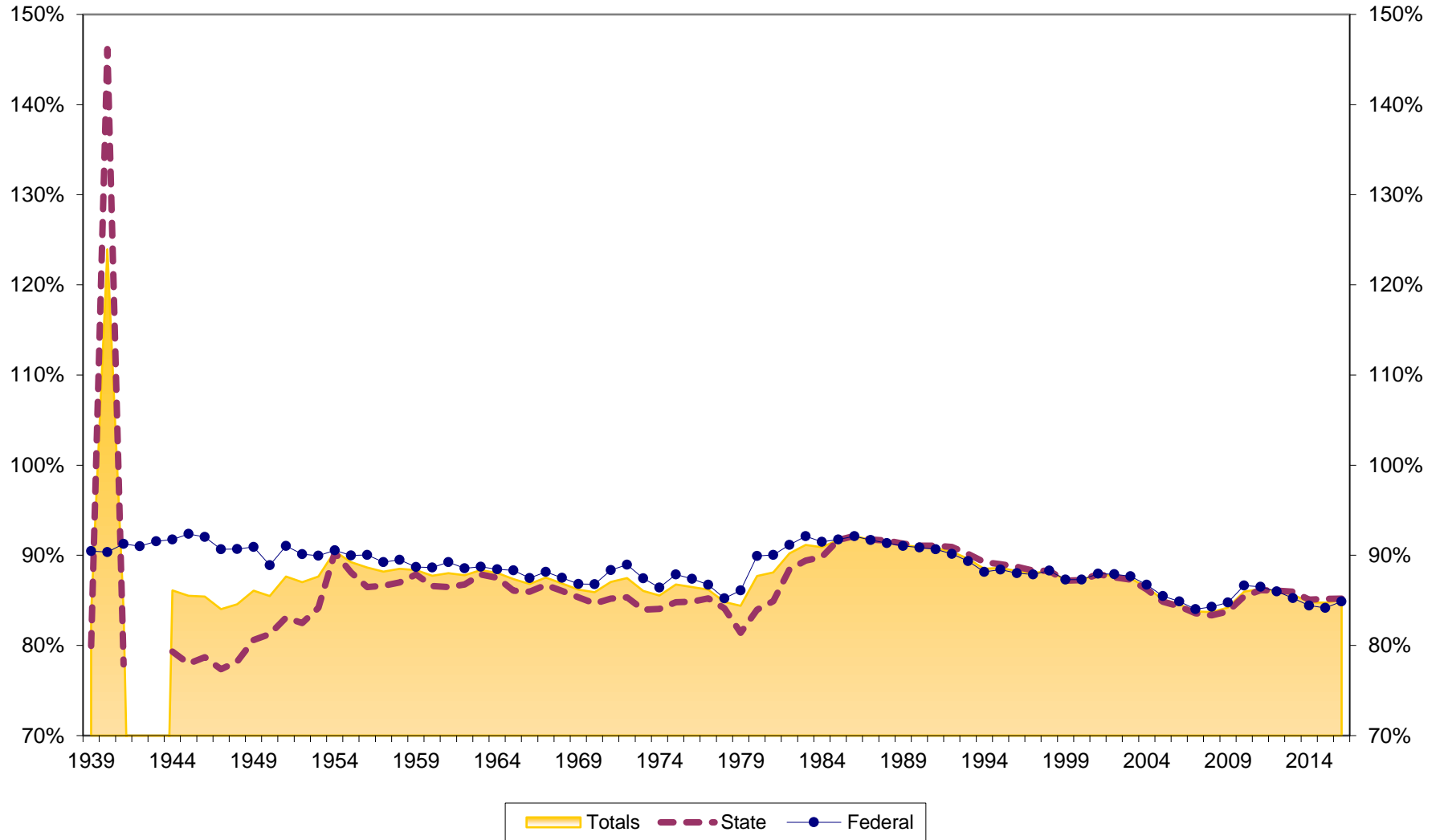
Loan Growth at California Credit Unions 1940-2016



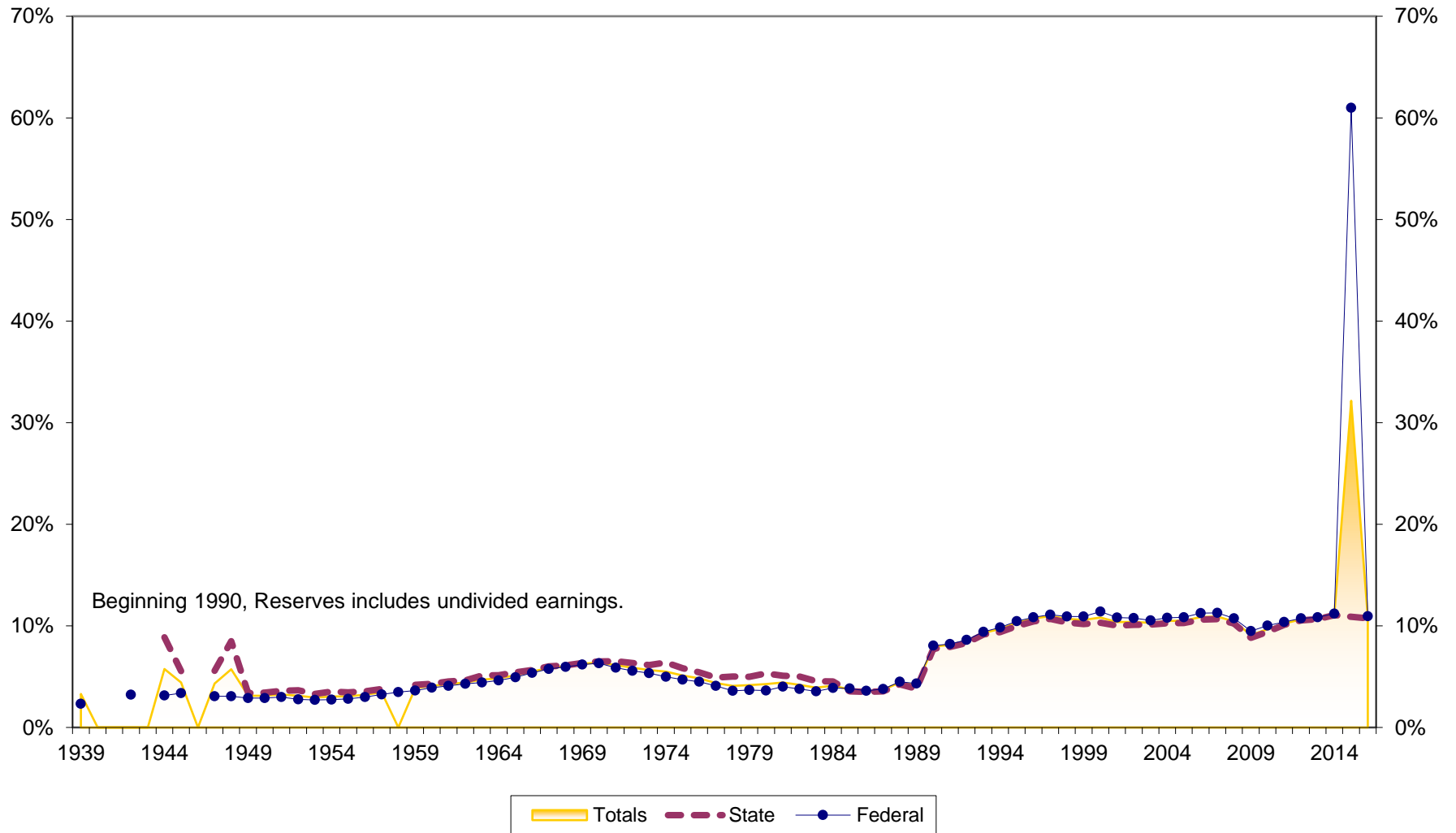
Loans to Savings Ratios at California Credit Unions 1939-2016



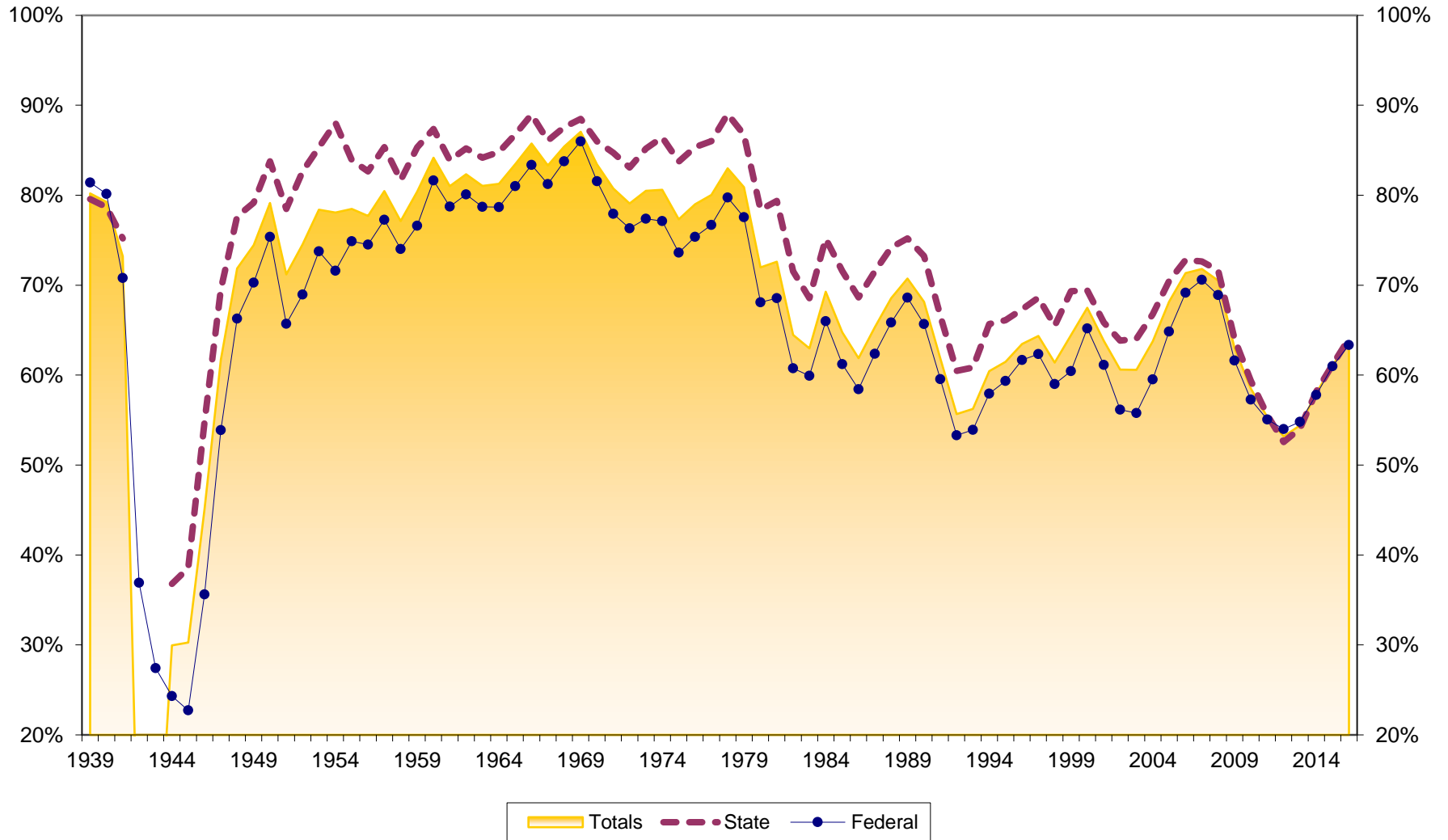
Savings to Assets at California Credit Unions 1939-2016



Reserves to Assets at California Credit Unions 1939-2016



Loans to Assets at California Credit Unions 1939-2016



Dollar Asset Growth at California Credit Unions (in \$Millions) 1940-2016

