

Florida Totals Statistics

Year	# of CUs	# of Memberships	Savings (\$)	Loans (\$)	Reserves (\$)*	Assets (\$)
1939	142	25,407	1,706,071	2,081,128	39,115	1,944,380
1940	166	30,395	2,267,355	3,659,269	0	2,572,612
1941	201	39,142	3,125,054	2,749,794	0	3,512,655
1942	204	36,066	2,028,646	1,732,640	96,227	2,230,058
1943	192	34,431	2,015,766	1,559,768	0	2,198,000
1944	168	34,991	4,629,791	1,774,033	278,735	5,014,622
1945	160	35,202	5,742,807	2,099,007	228,720	6,191,836
1946	174	39,007	6,608,819	3,237,060	250,891	7,182,915
1947	173	45,339	7,548,875	4,911,313	304,897	8,370,812
1948	175	52,679	9,140,186	6,696,827	603,484	10,277,333
1949	203	62,710	11,244,448	8,875,035	488,075	12,608,618
1950	218	71,762	13,991,045	12,215,678	640,087	16,142,239
1951	245	83,811	17,143,024	13,791,213	793,278	19,141,834
1952	271	102,559	23,086,664	19,039,590	1,004,728	25,645,662
1953	328	122,349	30,288,174	27,085,708	1,322,437	34,356,836
1954	382	145,757	38,344,367	32,848,158	1,691,986	43,122,863
1955	414	169,152	47,902,267	42,234,225	2,154,426	54,327,365
1956	432	196,868	59,476,203	51,267,807	2,837,844	67,519,291
1957	487	229,942	71,631,328	64,441,507	3,888,132	80,941,297
1958	506	261,115	85,305,272	75,873,520	4,723,133	97,012,005
1959	529	294,297	103,047,430	94,597,569	5,815,171	117,810,273
1960	549	327,027	118,965,784	113,746,065	7,263,414	136,176,451
1961	575	357,312	137,118,971	125,882,791	8,840,058	155,338,908
1962	569	390,911	156,226,845	145,374,756	11,265,433	179,130,411
1963	563	417,119	180,161,379	163,467,858	12,849,521	204,986,901
1964	575	451,113	213,072,370	189,144,999	14,998,935	241,745,411
1965	589	480,313	242,614,706	219,164,167	17,990,638	277,398,769
1966	617	530,784	272,834,448	250,189,242	21,933,484	312,718,414
1967	612	597,418	309,423,806	277,709,860	25,408,959	353,161,435
1968	634	626,643	353,897,680	334,712,222	29,594,232	406,200,933
1969	660	679,964	413,801,976	394,875,229	33,466,516	476,419,048
1970	652	722,362	492,242,456	458,710,199	38,062,955	567,225,152
1971	648	793,678	620,380,140	553,790,851	43,550,232	708,566,085
1972	632	862,078	780,495,320	673,009,765	49,635,718	877,963,201
1973	625	936,443	928,566,984	821,135,969	55,641,291	1,057,413,248
1974	628	1,022,162	1,045,821,498	946,073,026	64,034,435	1,211,998,909
1975	622	1,124,208	1,287,825,176	1,096,186,053	73,583,613	1,462,318,365
1976	617	1,201,068	1,516,759,307	1,319,591,306	88,361,169	1,752,686,740
1977	609	1,284,163	1,838,299,148	1,570,030,209	98,444,632	2,135,630,379
1978	596	1,629,402	2,143,181,556	1,888,327,920	100,981,604	2,491,703,993
1979	599	1,469,446	2,236,163,769	1,988,617,737	117,816,645	2,589,975,221
1980	572	1,656,055	2,548,484,290	1,920,944,702	133,515,789	2,836,575,628
1981	548	1,756,233	2,679,803,990	2,063,737,025	142,550,215	3,000,990,086
1982	548	1,806,173	3,108,094,198	2,145,091,812	152,649,198	3,450,624,026
1983	502	1,882,727	3,734,729,853	2,507,425,471	164,879,980	4,112,757,397
1984	477	1,931,268	4,365,488,970	3,146,322,047	198,714,052	4,807,456,619
1985	449	2,048,528	5,426,963,024	3,585,767,220	233,745,122	5,906,086,681
1986	418	2,184,426	6,680,309,813	4,148,573,558	266,032,043	7,259,775,516
1987	400	2,373,607	7,394,174,289	4,829,587,263	290,318,983	8,080,763,362
1988	384	2,453,011	8,060,337,501	5,415,679,897	374,039,448	8,830,897,491
1989	369	2,546,879	8,250,987,545	5,807,832,001	347,123,955	8,997,355,920
1990	351	2,632,831	8,852,630,055	5,965,104,628	707,701,812	9,678,261,846
1991	330	2,680,562	9,760,552,146	5,995,602,436	786,709,972	10,722,079,750
1992	305	2,813,164	11,485,562,460	6,214,696,108	968,017,914	12,563,931,002
1993	289	2,911,903	11,772,320,225	6,928,401,104	1,188,907,042	13,135,198,786
1994	281	3,042,271	12,215,322,419	8,230,212,851	1,332,599,527	13,756,380,974
1995	276	3,229,935	13,274,087,327	9,344,592,012	1,561,389,034	14,968,901,782
1996	273	3,381,766	14,060,203,601	10,433,355,904	1,735,110,813	15,936,347,103
1997	265	3,529,339	15,354,140,224	11,313,290,658	1,906,376,610	17,407,594,533
1998	263	3,684,182	17,052,773,111	12,074,731,174	2,089,376,500	19,391,441,674
1999	253	3,770,720	17,923,048,880	13,132,033,047	2,211,673,623	20,623,190,861
2000	249	3,893,092	19,135,512,518	14,850,520,450	2,502,366,074	22,031,822,191
2001	246	4,013,003	22,281,575,376	16,162,724,730	2,766,484,617	25,619,543,679
2002	241	4,134,298	25,235,430,617	17,625,888,183	3,113,580,203	29,141,901,686
2003	235	4,245,482	27,995,198,144	19,643,480,631	3,367,943,562	32,289,410,717
2004	229	4,393,381	30,880,603,513	22,203,398,319	3,652,415,272	35,561,025,140
2005	217	4,480,669	32,609,437,028	25,196,922,967	3,996,027,053	37,887,934,552
2006	206	4,531,514	33,865,689,717	27,434,845,263	4,348,506,057	39,737,430,584
2007	195	4,549,865	35,044,326,215	29,064,185,869	4,468,093,117	41,025,955,240
2008	185	4,550,479	34,937,360,013	29,335,581,378	4,334,568,373	41,575,177,132
2009	179	4,562,417	36,743,552,047	28,260,497,971	4,026,749,497	42,594,624,999
2010	176	4,532,693	36,447,322,776	26,451,930,254	4,037,228,509	42,015,422,764
2011	167	4,607,812	37,505,814,821	25,467,746,181	4,280,851,357	43,382,850,558
2012	161	4,595,050	39,339,216,307	26,378,661,051	4,639,198,876	45,505,485,448
2013	158	4,716,196	40,734,184,021	28,283,201,470	4,892,431,030	47,255,723,982
2014	156	4,964,794	42,632,246,213	31,206,570,780	5,361,305,229	49,783,027,538
2015	150	5,215,117	46,218,605,116	34,501,323,436	5,694,367,149	54,019,370,916
2016	141	5,394,879	49,955,961,529	38,524,152,551	6,053,038,711	58,733,788,995

* Beginning 1990, Reserves includes undivided earnings.

Florida State Statistics

Year	# of CUs	# of Memberships	Savings (\$)	Loans (\$)	Reserves (\$)*	Assets (\$)
1939	56	8,164	629,592	1,119,302		745,389
1940	74	10,031	868,355	2,347,269		996,612
1941	98	14,350	1,228,401	1,150,794		1,394,655
1942	109	13,606		812,849		
1943	100	14,987		889,768		
1944	80	15,589	2,339,109	1,060,078	177,459	2,543,963
1945	71	15,110	2,818,872	1,155,792	118,469	3,063,098
1946	85	16,638	3,110,125	1,612,833	130,052	3,396,431
1947	85	19,638	3,532,589	2,389,882	153,781	3,921,537
1948	86	22,466	4,310,292	3,216,393	409,766	4,902,034
1949	104	26,905	5,354,874	4,228,954	242,998	6,023,678
1950	108	30,404	6,550,834	5,799,970	314,735	7,569,266
1951	117	35,419	7,925,978	6,486,917	386,894	8,837,737
1952	136	42,064	10,380,145	8,638,546	488,057	11,556,130
1953	178	49,739	13,456,175	12,479,334	622,385	15,321,440
1954	220	61,419	17,244,739	15,037,610	805,455	19,326,266
1955	239	72,011	21,533,249	18,581,281	1,056,336	24,126,695
1956	247	84,613	26,469,419	22,417,975	1,339,661	29,740,387
1957	288	100,510	32,063,239	28,928,698	1,957,088	36,208,995
1958	298	116,599	39,576,208	35,969,424	2,485,257	44,949,606
1959	310	130,019	48,091,224	44,497,186	2,531,713	54,553,288
1960	318	141,518	54,267,296	51,699,002	2,997,701	61,973,203
1961	315	150,702	61,510,616	55,784,113	3,649,024	69,702,638
1962	309	164,081	71,024,185	63,510,024	4,472,774	79,981,933
1963	305	175,677	81,827,721	72,012,960	5,316,517	92,603,479
1964	322	190,005	95,620,370	82,645,999	6,293,935	108,123,411
1965	318	201,304	107,210,706	93,723,167	7,714,638	121,882,769
1966	322	224,016	119,945,448	106,918,242	9,835,484	136,882,414
1967	301	258,982	136,074,806	117,555,860	11,240,959	154,198,435
1968	304	255,787	155,574,680	139,649,222	12,987,232	176,324,933
1969	318	279,852	177,471,976	160,617,229	14,057,516	200,718,048
1970	306	291,397	208,273,456	184,270,199	15,603,955	236,446,152
1971	316	324,522	255,074,140	220,309,851	17,280,232	289,635,085
1972	309	346,688	317,672,320	262,171,765	18,562,718	350,820,201
1973	308	377,373	374,995,984	317,543,969	20,209,291	414,935,248
1974	300	409,163	415,814,498	361,002,026	22,470,435	467,404,909
1975	296	447,467	506,502,176	404,571,053	24,963,613	551,081,365
1976	283	451,415	581,395,307	486,720,306	33,093,169	648,855,740
1977	266	475,817	695,839,148	585,090,209	35,627,632	766,517,379
1978	251	595,120	678,815,556	587,235,920	27,121,604	748,087,993
1979	257	528,976	688,428,769	603,528,737	38,866,645	776,429,221
1980	238	587,510	752,739,290	587,953,702	45,517,789	831,404,628
1981	227	613,927	774,995,990	614,415,025	42,750,215	869,160,086
1982	243	622,089	884,319,198	635,928,812	45,216,198	982,557,026
1983	207	638,812	1,034,729,853	747,425,471	43,879,980	1,143,757,397
1984	197	645,483	1,206,248,604	938,565,124	48,038,703	1,322,333,724
1985	185	668,053	1,464,441,183	989,322,715	48,249,646	1,560,448,545
1986	173	713,576	1,857,134,901	1,149,318,786	54,514,021	1,974,049,070
1987	167	753,732	2,063,857,990	1,372,435,682	61,839,569	2,203,243,331
1988	161	782,170	2,210,278,279	1,493,753,112	79,732,368	2,360,204,171
1989	153	795,963	2,240,128,889	1,572,955,036	69,465,023	2,401,344,362
1990	145	820,384	2,412,676,938	1,610,890,509	159,526,111	2,592,545,869
1991	137	841,994	2,637,536,681	1,634,886,640	182,810,562	2,839,159,790
1992	129	877,278	3,039,071,828	1,704,935,511	231,983,152	3,293,123,000
1993	119	900,076	3,080,795,339	1,908,827,869	292,830,693	3,410,796,079
1994	117	889,872	3,058,346,950	2,144,229,158	323,261,965	3,423,729,287
1995	115	923,850	3,336,155,029	2,428,920,987	367,705,002	3,728,389,365
1996	114	958,282	3,451,035,201	2,615,433,335	407,655,094	3,886,242,337
1997	115	1,051,041	3,960,793,642	2,952,425,734	483,057,591	4,477,500,003
1998	115	1,117,128	4,530,863,593	3,197,996,151	545,815,480	5,123,294,547
1999	113	1,319,358	5,691,036,622	4,137,040,996	713,107,377	6,474,672,502
2000	111	1,399,224	6,276,428,275	4,928,347,403	833,750,544	7,208,380,893
2001	112	1,931,752	10,573,793,411	7,705,801,378	1,320,777,590	12,262,351,634
2002	108	1,970,836	11,646,465,992	8,294,215,160	1,488,543,502	13,713,194,478
2003	105	1,960,256	12,529,717,333	8,844,176,909	1,557,576,786	14,662,842,371
2004	101	1,980,940	13,460,924,094	9,896,216,678	1,674,176,782	15,771,644,125
2005	96	2,034,829	14,401,200,826	11,342,311,916	1,826,701,279	16,810,737,872
2006	93	2,061,020	15,226,539,079	12,540,822,182	2,005,905,076	18,165,926,299
2007	85	2,059,792	15,630,381,966	13,283,985,281	1,986,837,553	18,458,104,166
2008	81	2,043,367	15,605,670,044	13,481,613,842	1,917,873,611	18,760,787,303
2009	79	2,179,641	17,655,518,907	13,909,728,462	1,929,147,431	20,735,243,658
2010	76	2,166,513	17,588,329,875	13,308,031,443	1,957,655,133	20,539,777,215
2011	74	2,228,381	18,233,610,398	12,979,879,872	2,097,991,260	21,380,215,199
2012	73	2,187,198	19,136,798,376	13,607,271,823	2,288,161,471	22,403,234,988
2013	72	2,806,068	24,530,426,540	18,478,301,192	2,879,268,039	28,768,395,157
2014	71	2,989,477	25,849,051,255	20,649,496,646	3,211,545,760	30,553,079,407
2015	70	3,251,307	29,260,549,069	23,777,039,489	3,567,941,105	34,581,960,430
2016	67	3,404,999	32,076,878,533	26,755,498,558	3,846,889,671	38,243,522,001

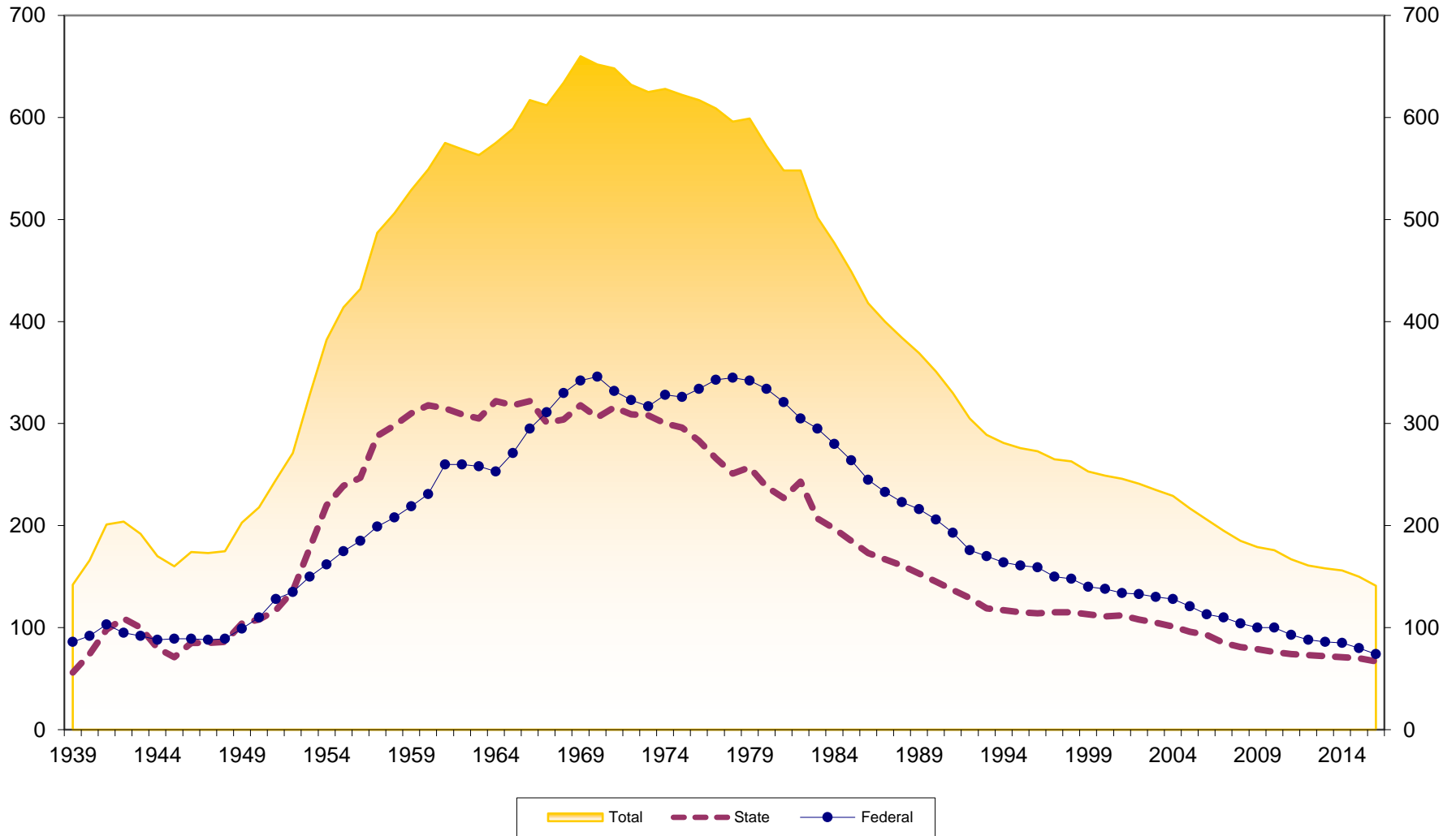
* Beginning 1990, Reserves includes undivided earnings.

Florida Federal Statistics

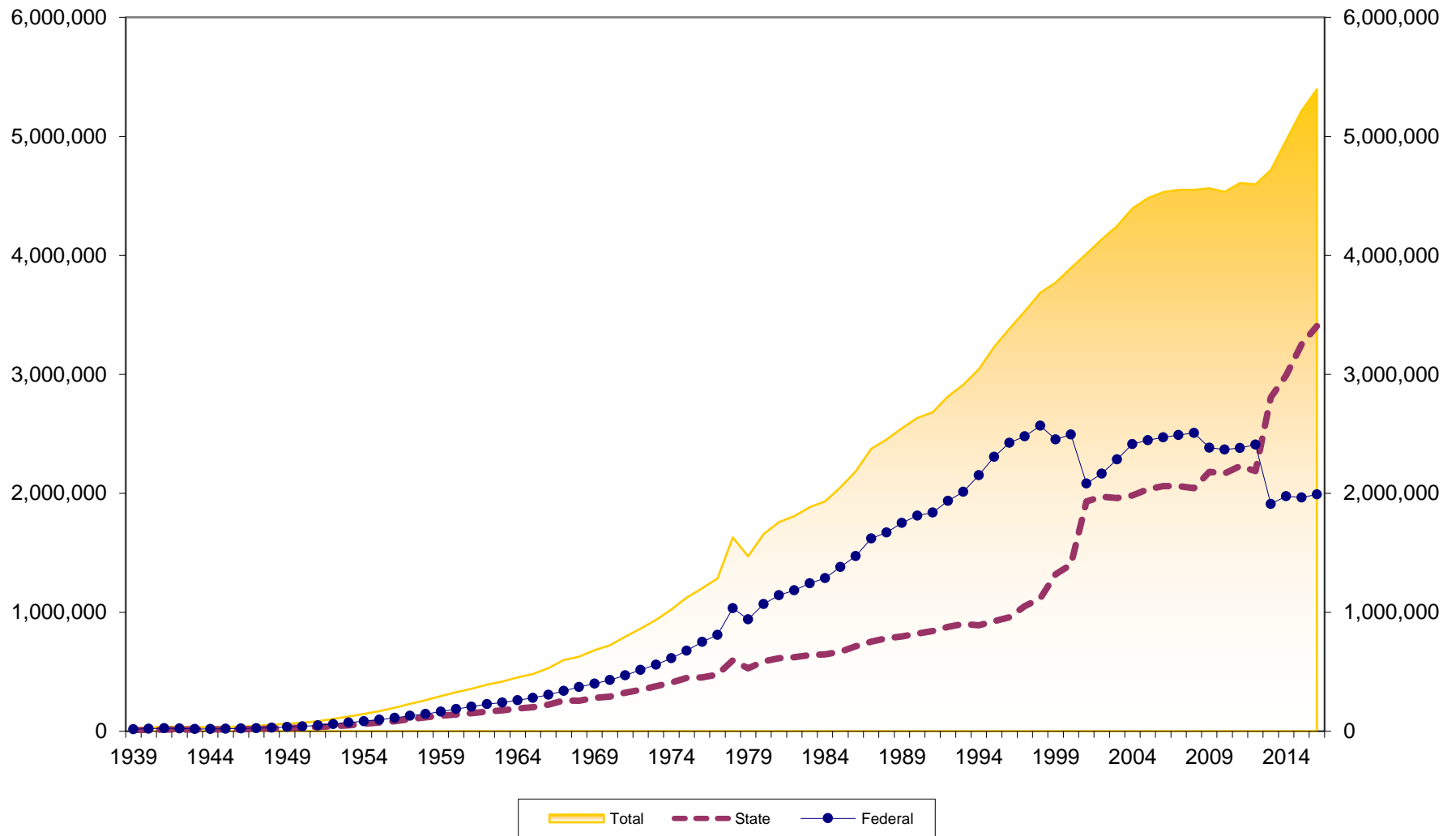
Year	# of CUs	# of Memberships	Savings (\$)	Loans (\$)	Reserves (\$)*	Assets (\$)
1939	86	17,243	1,076,479	961,826	39,115	1,198,991
1940	92	20,364	1,399,000	1,312,000		1,576,000
1941	103	24,792	1,896,653	1,599,000		2,118,000
1942	95	22,460	2,028,646	919,791	96,227	2,230,058
1943	92	19,444	2,015,766	670,000		2,198,000
1944	88	19,402	2,290,682	713,955	101,276	2,470,659
1945	89	20,092	2,923,935	943,215	110,251	3,128,738
1946	89	22,369	3,498,694	1,624,227	120,839	3,786,484
1947	88	25,701	4,016,286	2,521,431	151,116	4,449,275
1948	89	30,213	4,829,894	3,480,434	193,718	5,375,299
1949	99	35,805	5,889,574	4,646,081	245,077	6,584,940
1950	110	41,358	7,440,211	6,415,708	325,352	8,572,973
1951	128	48,392	9,217,046	7,304,296	406,384	10,304,097
1952	135	60,495	12,706,519	10,401,044	516,671	14,089,532
1953	150	72,610	16,831,999	14,606,374	700,052	19,035,396
1954	162	84,338	21,099,628	17,810,548	886,531	23,796,597
1955	175	97,141	26,369,018	23,652,944	1,098,090	30,200,670
1956	185	112,255	33,006,784	28,849,832	1,498,183	37,778,904
1957	199	129,432	39,568,089	35,512,809	1,931,044	44,732,302
1958	208	144,516	45,729,064	39,904,096	2,237,876	52,062,399
1959	219	164,278	54,956,206	50,100,383	3,283,458	63,256,985
1960	231	185,509	64,698,488	62,047,063	4,265,713	74,203,248
1961	260	206,610	75,608,355	70,098,678	5,191,034	85,636,270
1962	260	226,830	85,202,660	81,864,732	6,792,659	99,148,478
1963	258	241,442	98,333,658	91,454,898	7,533,004	112,383,422
1964	253	261,108	117,452,000	106,499,000	8,705,000	133,622,000
1965	271	279,009	135,404,000	125,441,000	10,276,000	155,516,000
1966	295	306,768	152,889,000	143,271,000	12,098,000	175,836,000
1967	311	338,436	173,349,000	160,154,000	14,168,000	198,963,000
1968	330	370,856	198,323,000	195,063,000	16,607,000	229,876,000
1969	342	400,112	236,330,000	234,258,000	19,409,000	275,701,000
1970	346	430,965	283,969,000	274,440,000	22,459,000	330,779,000
1971	332	469,156	365,306,000	333,481,000	26,270,000	418,931,000
1972	323	515,390	462,823,000	410,838,000	31,073,000	527,143,000
1973	317	559,070	553,571,000	503,592,000	35,432,000	642,478,000
1974	328	612,999	630,007,000	585,071,000	41,564,000	744,594,000
1975	326	676,741	781,323,000	691,615,000	48,620,000	911,237,000
1976	334	749,653	935,364,000	832,871,000	55,268,000	1,103,831,000
1977	343	808,346	1,142,460,000	984,940,000	62,817,000	1,369,113,000
1978	345	1,034,282	1,464,366,000	1,301,092,000	73,860,000	1,743,616,000
1979	342	940,470	1,547,735,000	1,385,089,000	78,950,000	1,813,546,000
1980	334	1,068,545	1,795,745,000	1,332,991,000	87,998,000	2,005,171,000
1981	321	1,142,306	1,904,808,000	1,449,322,000	99,800,000	2,131,830,000
1982	305	1,184,084	2,223,775,000	1,509,163,000	107,433,000	2,468,067,000
1983	295	1,243,915	2,700,000,000	1,760,000,000	121,000,000	2,969,000,000
1984	280	1,285,785	3,159,240,366	2,207,756,923	150,675,349	3,485,122,895
1985	264	1,380,475	3,962,521,841	2,596,444,505	185,495,476	4,345,638,136
1986	245	1,470,850	4,823,174,912	2,999,254,772	211,518,022	5,285,726,446
1987	233	1,619,875	5,330,316,299	3,457,151,581	228,479,414	5,877,520,031
1988	223	1,670,841	5,850,059,222	3,921,926,785	294,307,080	6,470,693,320
1989	216	1,750,916	6,010,858,656	4,234,876,965	277,658,932	6,596,011,558
1990	206	1,812,447	6,439,953,117	4,354,214,119	548,175,701	7,085,715,977
1991	193	1,838,568	7,123,015,465	4,360,715,796	603,899,410	7,882,919,960
1992	176	1,935,886	8,446,490,632	4,509,760,597	736,034,762	9,270,808,002
1993	170	2,011,827	8,691,524,886	5,019,573,235	896,076,349	9,724,402,707
1994	164	2,152,399	9,156,975,469	6,085,983,693	1,009,337,562	10,332,651,687
1995	161	2,306,085	9,937,932,298	6,915,671,025	1,193,684,032	11,240,512,417
1996	159	2,423,484	10,609,168,400	7,817,922,569	1,327,455,719	12,050,104,766
1997	150	2,478,298	11,393,346,582	8,360,864,924	1,423,319,019	12,930,094,530
1998	148	2,567,054	12,521,909,518	8,876,735,023	1,543,561,020	14,268,147,127
1999	140	2,451,362	12,232,012,258	8,994,992,051	1,498,566,246	14,148,518,359
2000	138	2,493,868	12,859,084,243	9,922,173,047	1,668,615,530	14,823,441,298
2001	134	2,081,251	11,707,781,965	8,456,923,352	1,445,707,027	13,357,192,045
2002	133	2,163,462	13,588,964,625	9,331,673,023	1,625,036,701	15,428,707,208
2003	130	2,285,226	15,465,480,811	10,799,303,722	1,810,366,776	17,626,568,346
2004	128	2,412,441	17,419,679,419	12,307,181,641	1,978,238,490	19,789,381,015
2005	121	2,445,840	18,208,236,202	13,854,611,051	2,169,325,774	21,077,196,680
2006	113	2,470,494	18,639,150,638	14,894,023,081	2,342,600,981	21,571,504,285
2007	110	2,490,073	19,413,944,249	15,780,200,588	2,481,255,564	22,567,851,074
2008	104	2,507,112	19,331,689,969	15,853,967,536	2,416,694,762	22,814,389,829
2009	100	2,382,776	19,088,033,140	14,350,769,509	2,097,602,066	21,859,381,341
2010	100	2,366,180	18,858,992,901	13,143,898,811	2,079,573,376	21,475,645,549
2011	93	2,379,431	19,272,204,423	12,487,866,309	2,182,860,097	22,002,635,359
2012	88	2,407,852	20,202,417,931	12,771,389,228	2,351,037,405	23,102,250,460
2013	86	1,910,128	16,203,757,481	9,804,900,278	2,013,162,991	18,487,328,825
2014	85	1,975,317	16,783,194,958	10,557,074,134	2,149,759,469	19,229,948,131
2015	80	1,963,810	16,958,056,047	10,724,283,947	2,126,426,044	19,437,410,486
2016	74	1,989,880	17,879,082,996	11,768,653,993	2,206,149,040	20,490,266,994

* Beginning 1990, Reserves includes undivided earnings.

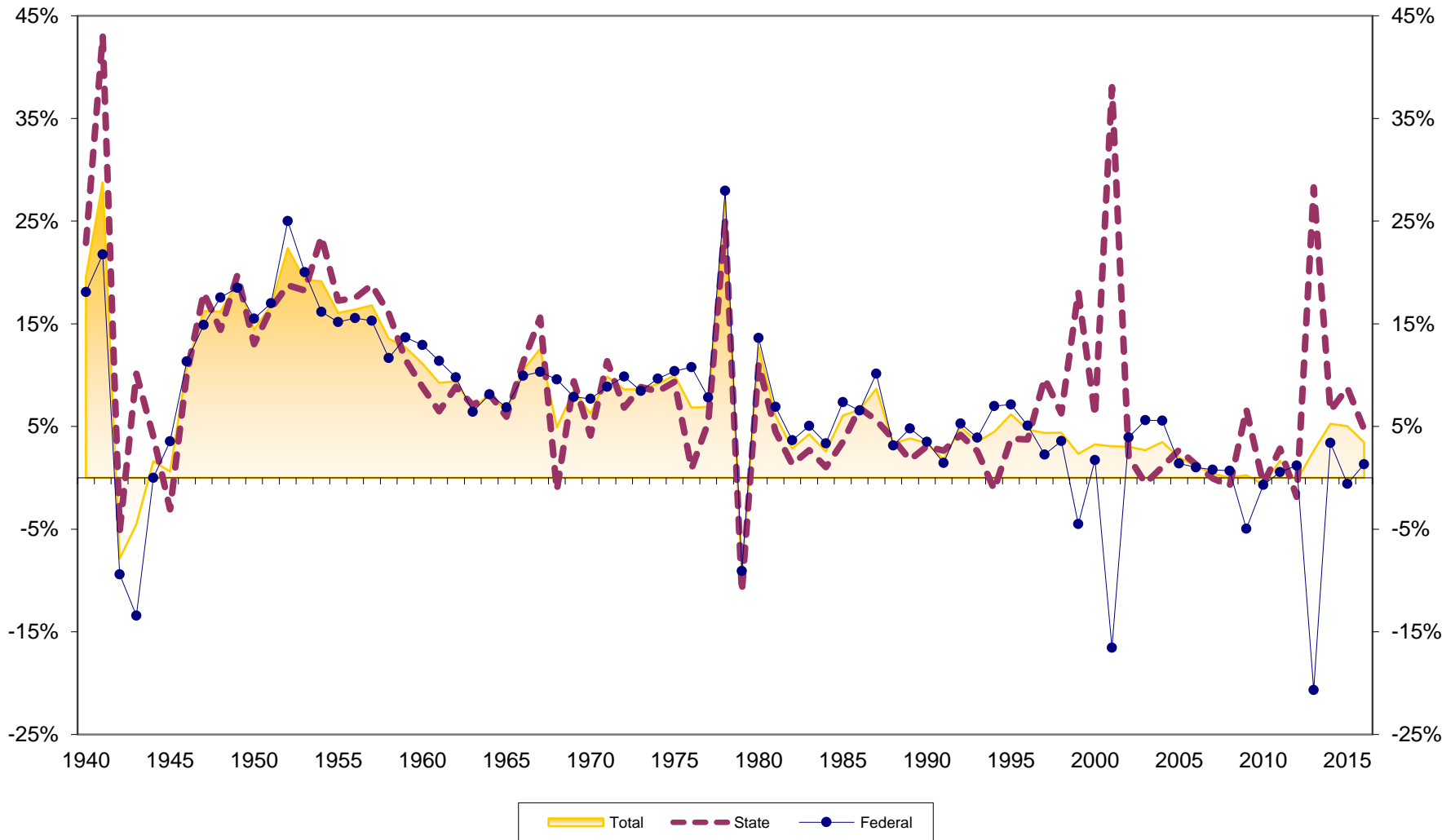
Number of Florida Credit Unions 1939-2016



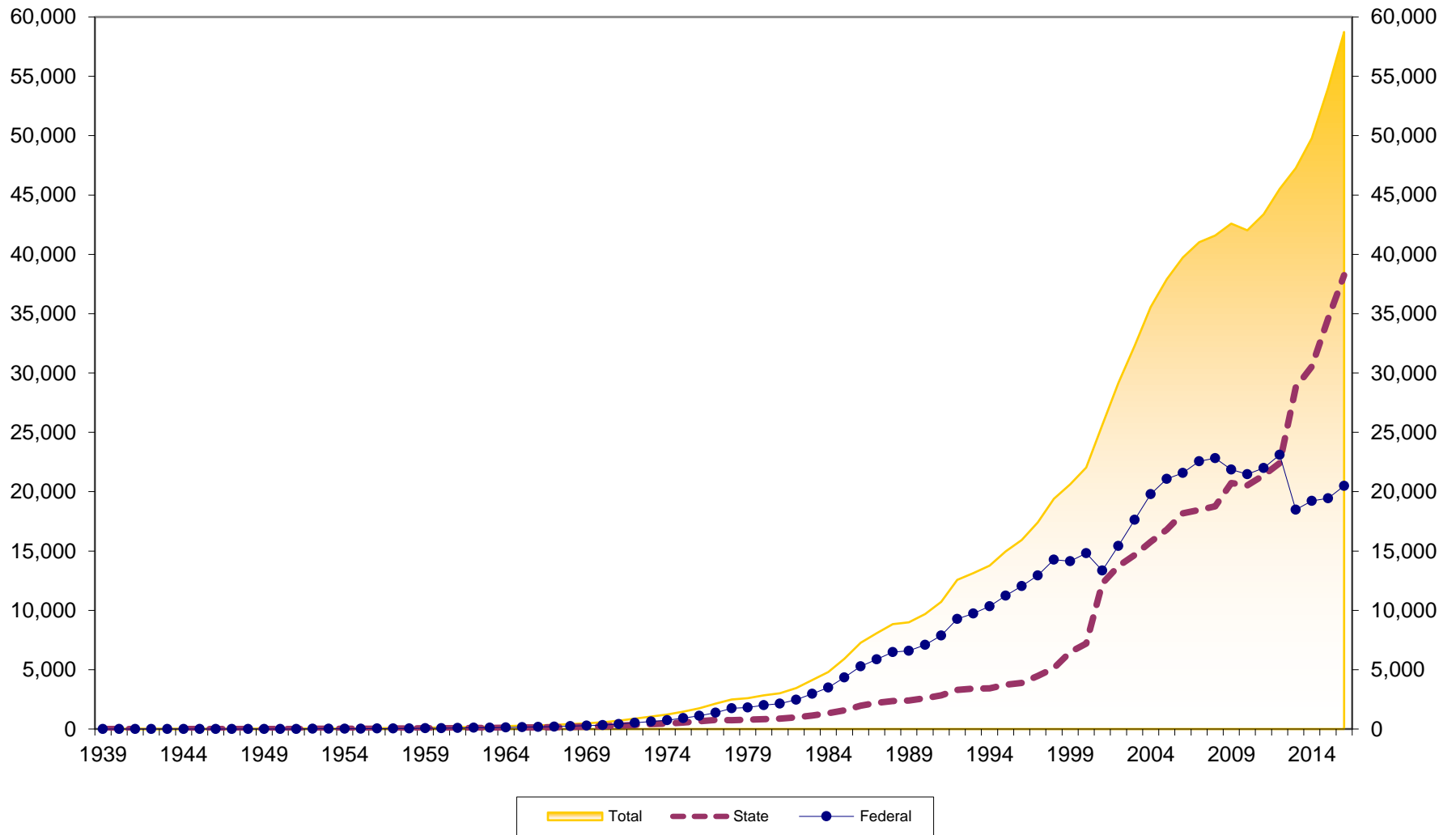
Number of Memberships at Florida Credit Unions 1939-2016



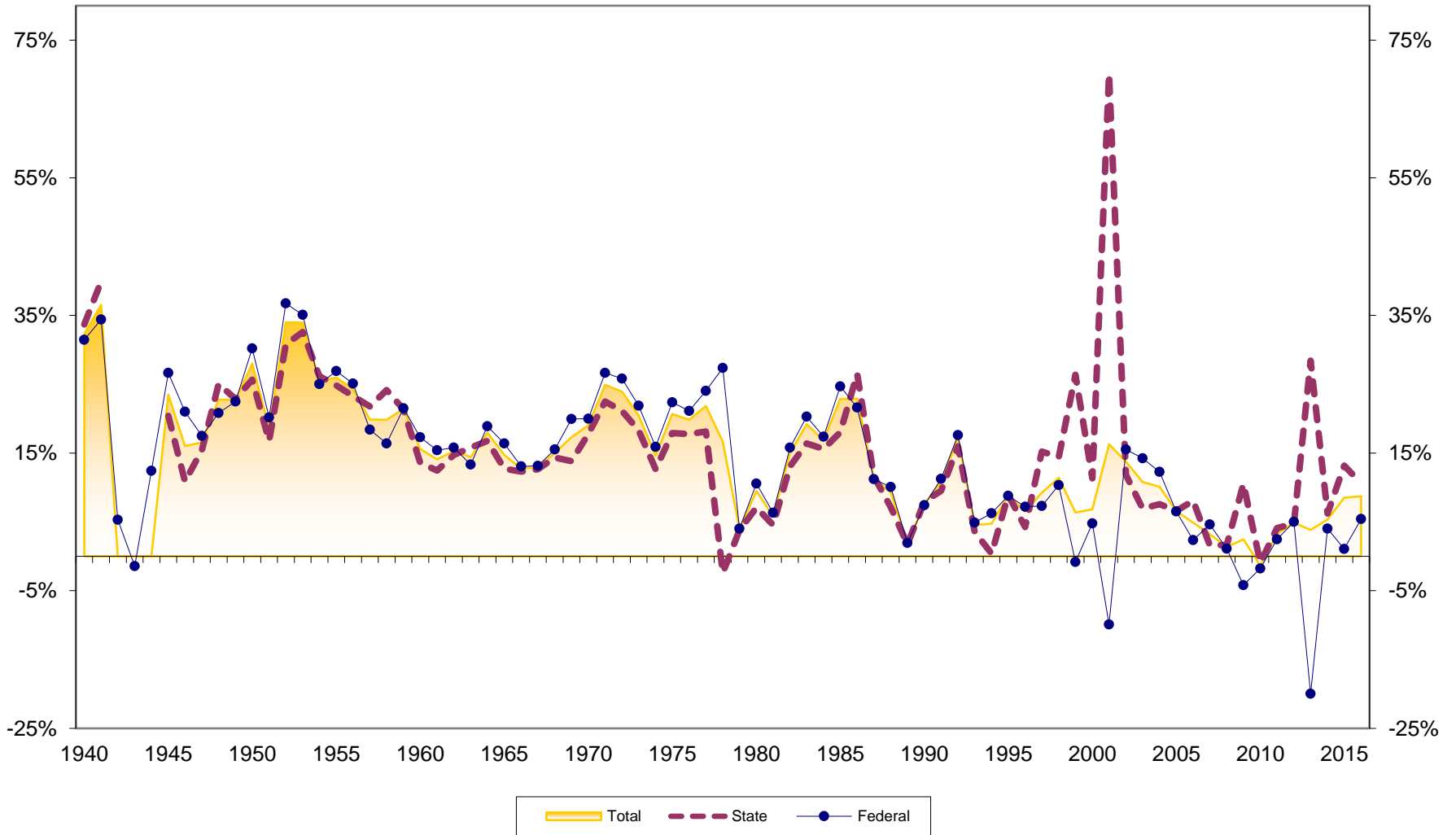
Membership Growth at Florida Credit Unions 1940-2016



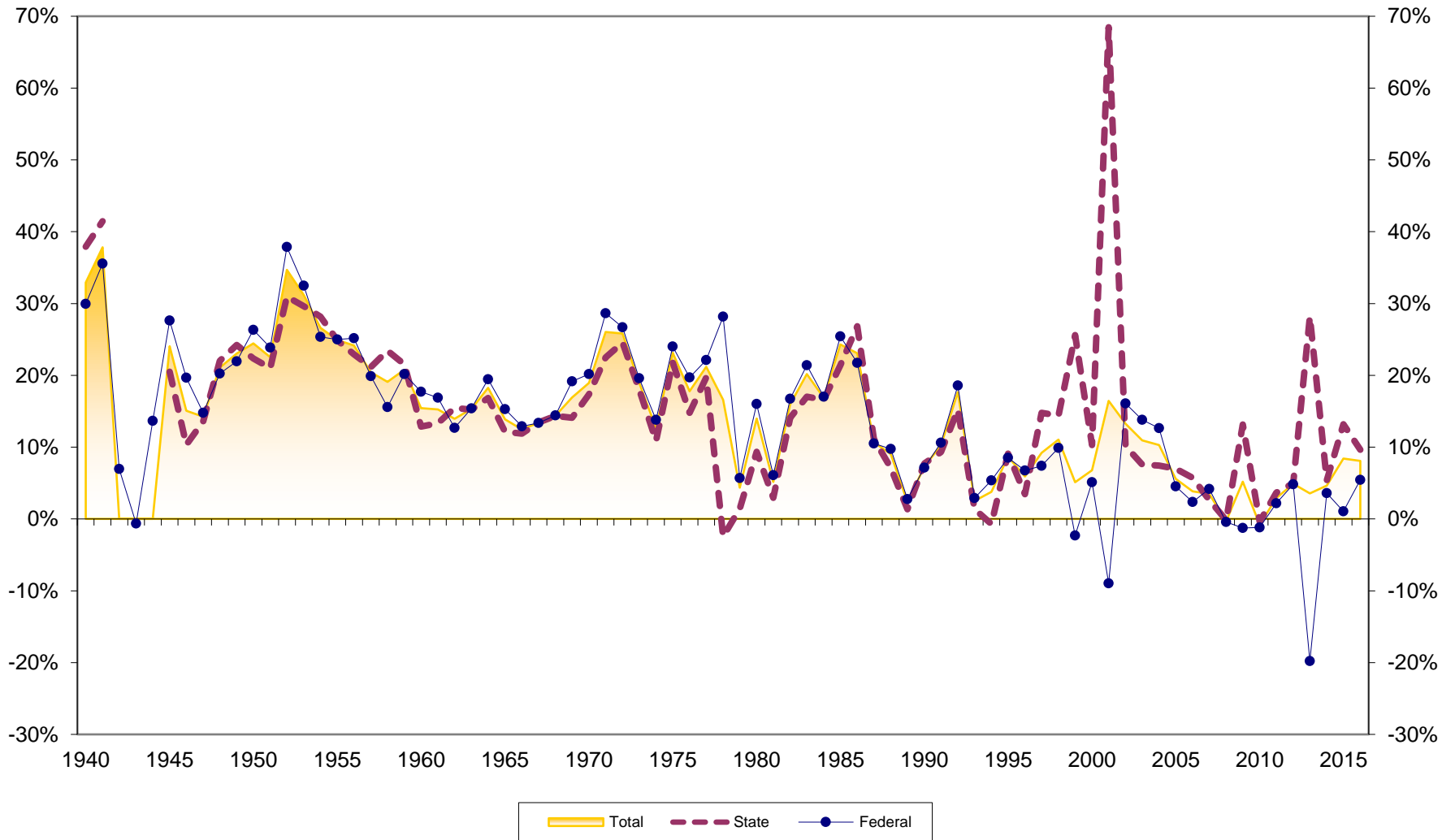
Assets at Florida Credit Unions 1939-2016



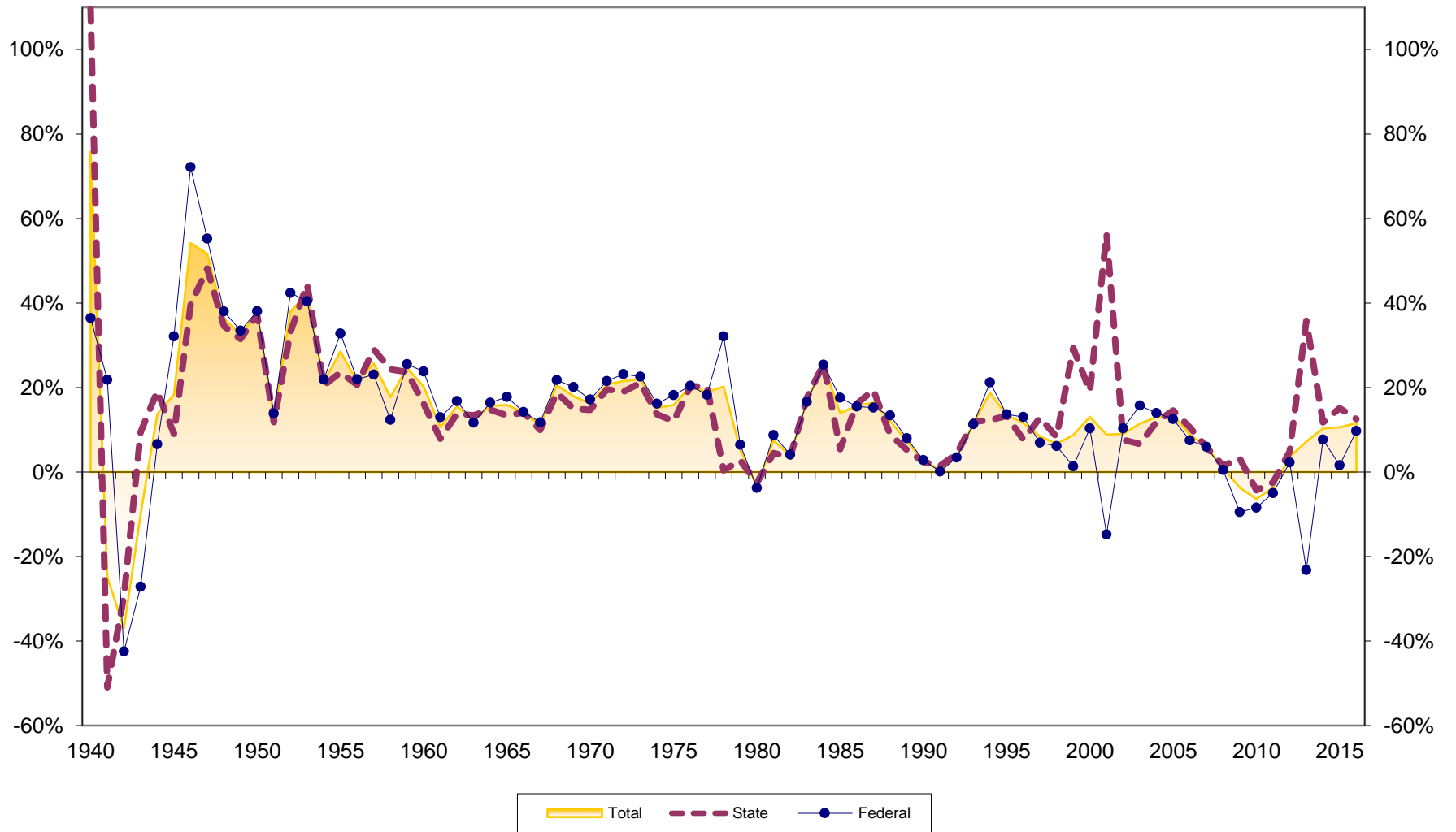
Asset Growth at Florida Credit Unions 1940-2016



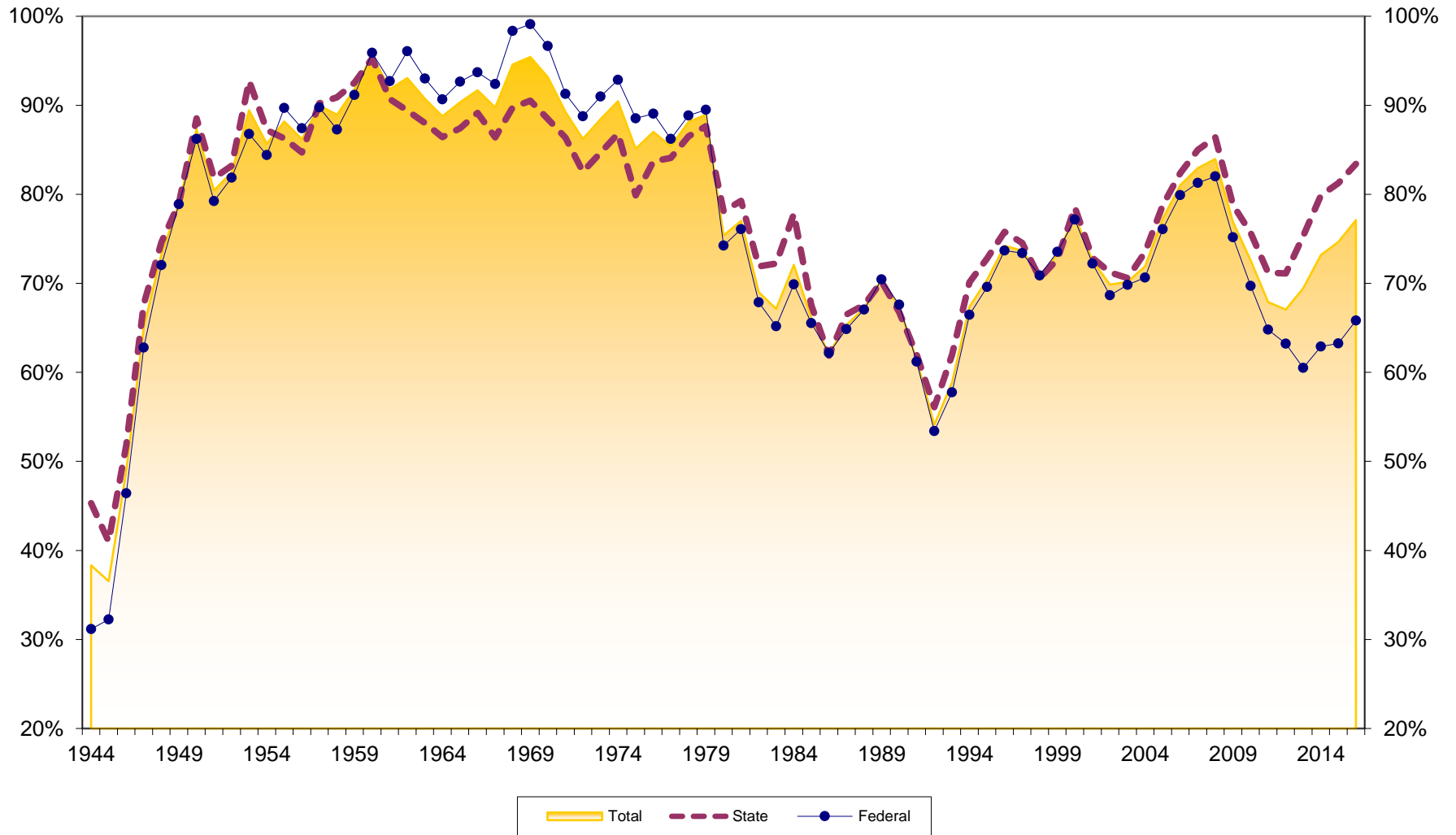
Savings Growth at Florida Credit Unions 1940-2016



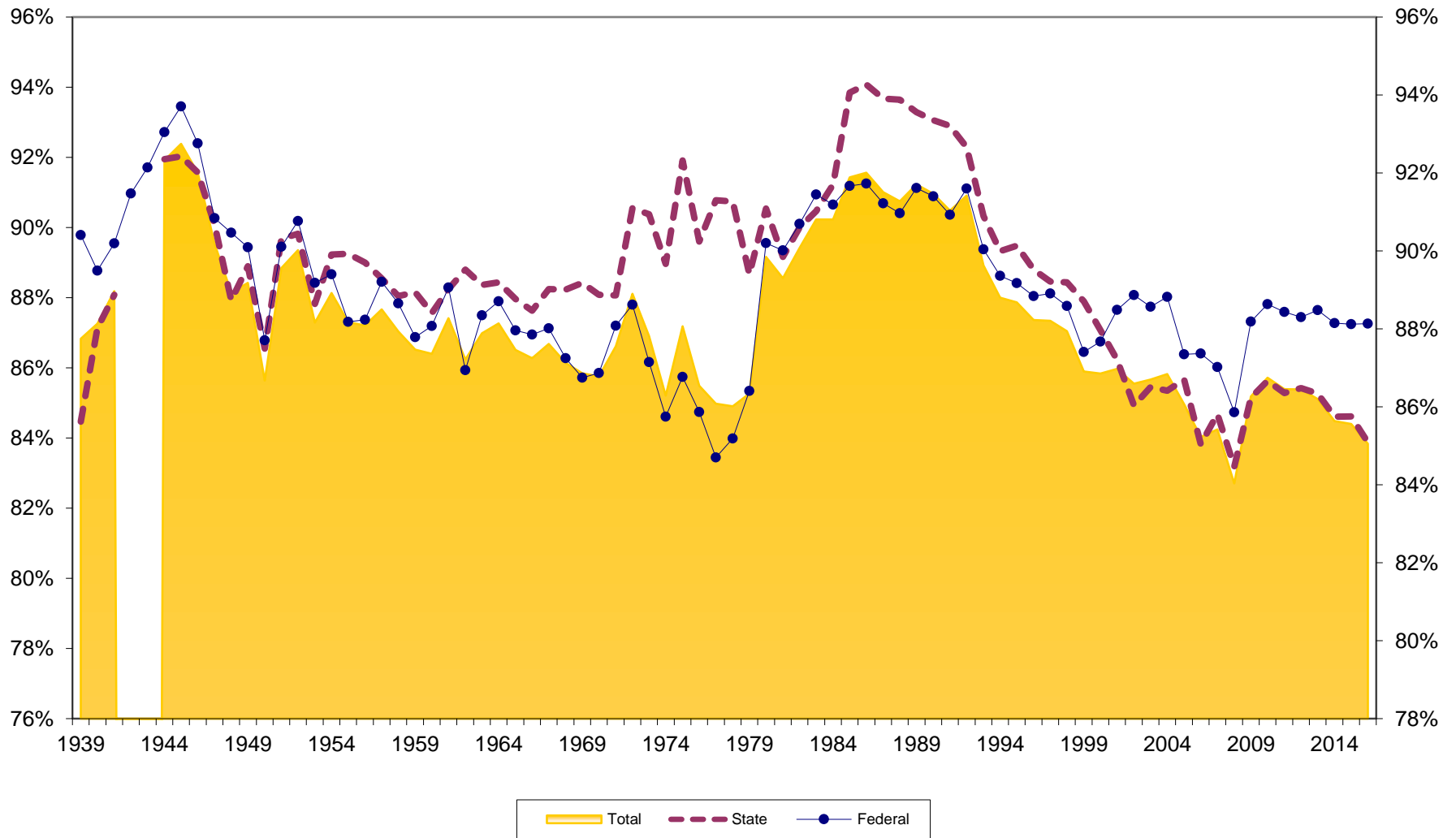
Loan Growth at Florida Credit Unions 1940-2016



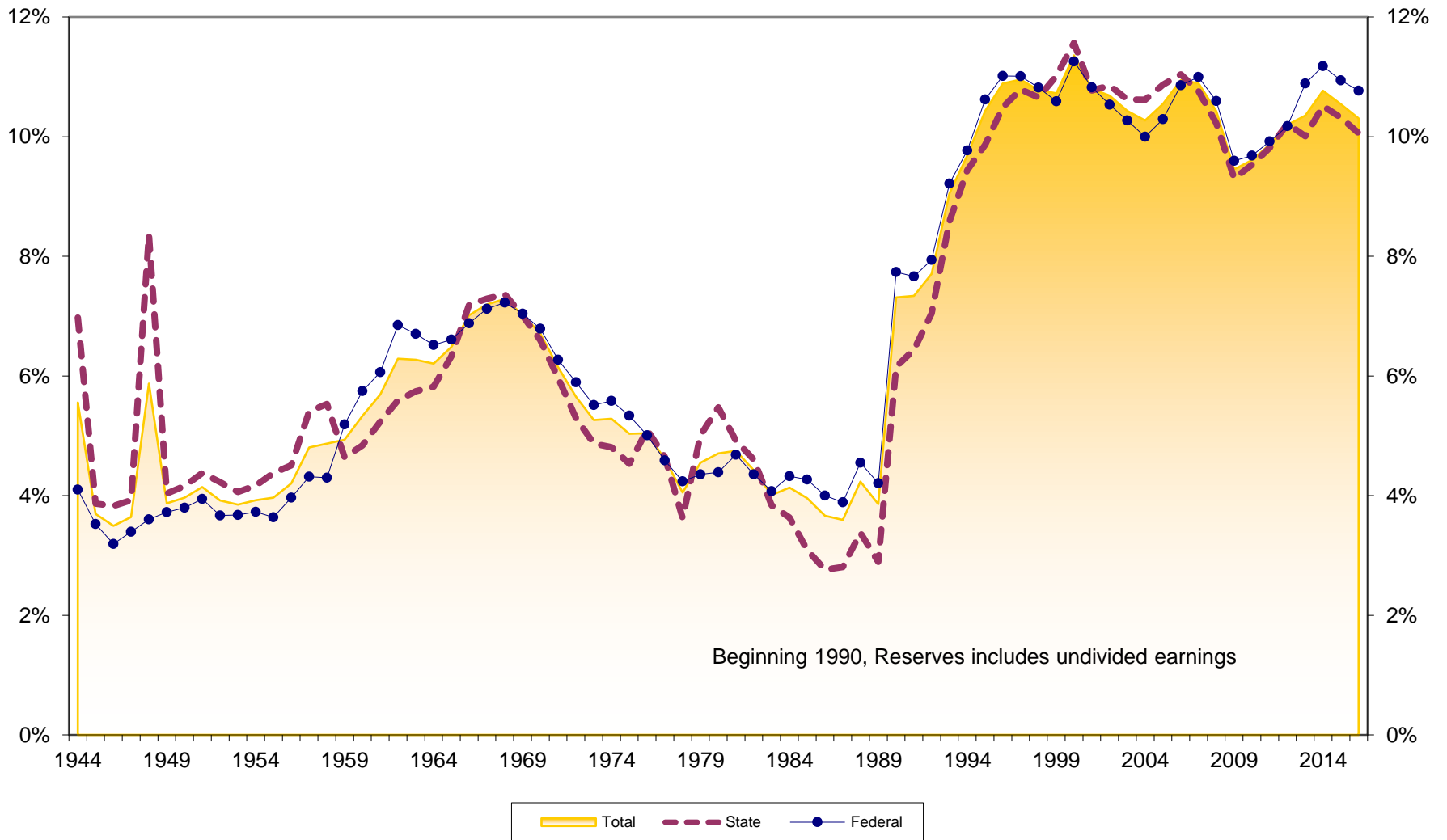
Loans to Savings at Florida Credit Unions 1944-2016



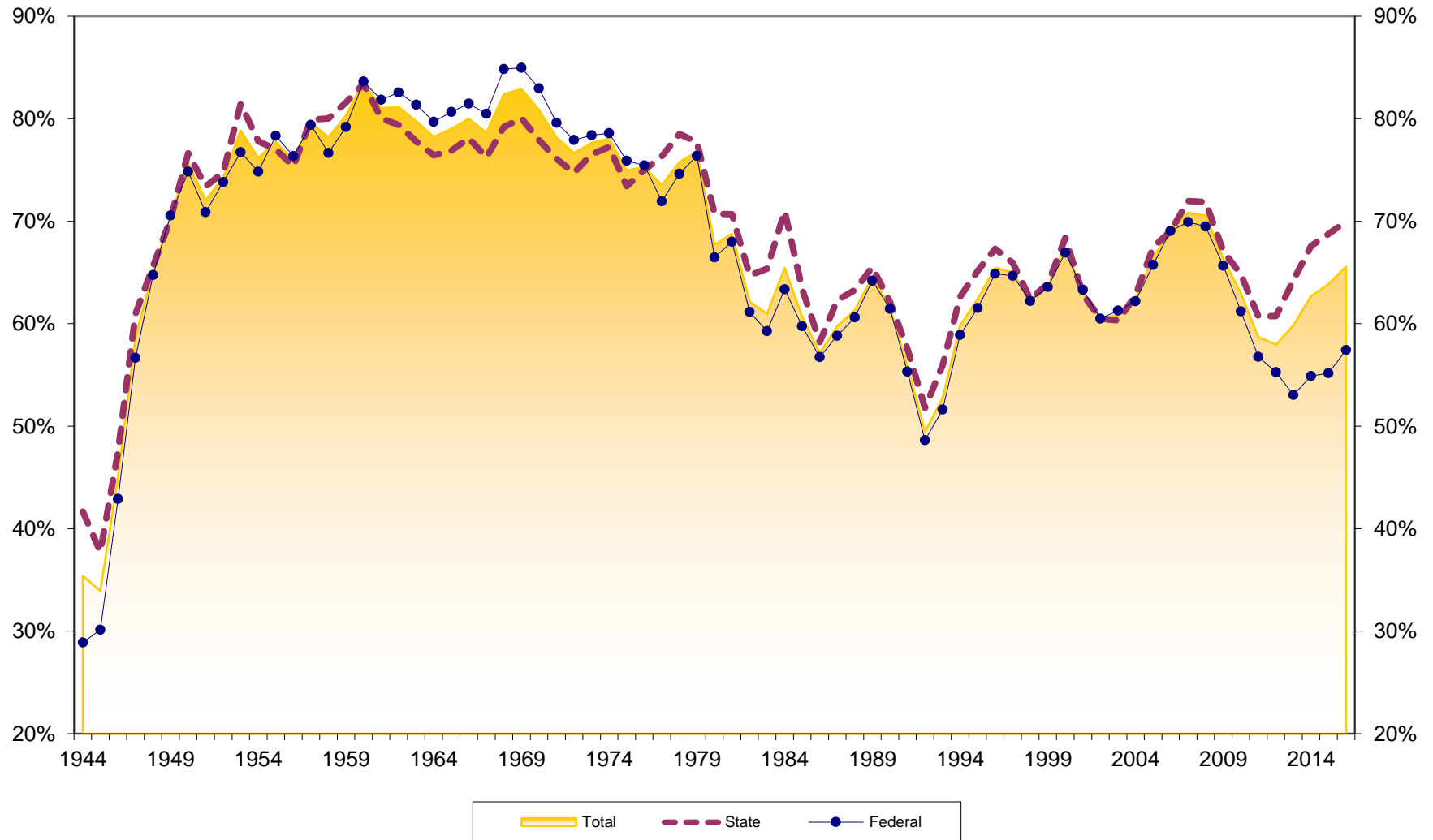
Savings to Assets at Florida Credit Unions 1939-2016



Reserves to Assets at Florida Credit Unions 1944-2016



Loans to Assets at Florida Credit Unions 1944-2016



Dollar Asset Growth at Florida Credit Unions (in \$Millions) 1940-2016

