

Illinois Totals Statistics

Year	# of CUs	# of Memberships	Savings (\$)	Loans (\$)	Reserves (\$)*	Assets (\$)
1939	671	253,474	20,074,622	16,365,721	34,740	21,688,582
1940	750	310,809	27,201,862	22,924,981	0	29,510,611
1941	831	366,491	35,182,645	26,132,514	0	37,978,757
1942	849	349,936	4,373,992	17,038,979	145,964	4,763,795
1943	782	334,346	4,599,154	13,209,074	0	4,983,000
1944	756	290,032	42,522,556	13,135,592	2,924,278	46,666,917
1945	758	330,830	47,144,644	14,011,222	2,931,533	51,250,789
1946	784	354,774	55,913,391	20,048,907	3,113,888	59,917,192
1947	798	387,943	66,469,087	28,435,015	3,599,735	71,490,881
1948	845	456,071	76,739,356	38,882,510	4,684,649	82,661,119
1949	882	438,032	84,665,754	49,139,861	5,320,103	92,631,537
1950	928	472,055	97,632,467	64,058,083	6,785,484	107,341,119
1951	1,018	510,300	115,029,665	67,974,348	8,050,928	124,970,915
1952	1,129	558,193	139,505,391	85,461,383	5,235,673	151,623,368
1953	1,246	597,403	166,083,327	110,135,015	8,600,988	181,842,901
1954	1,322	632,834	190,484,846	125,734,913	10,281,455	209,139,233
1955	1,402	681,544	222,452,559	156,985,265	12,250,143	247,277,998
1956	1,472	732,145	258,316,583	179,382,946	14,517,107	286,183,691
1957	1,582	780,785	294,655,175	212,785,720	16,962,047	327,054,584
1958	1,638	824,491	325,447,889	229,650,116	19,643,297	359,514,833
1959	1,667	862,481	360,280,689	268,969,035	21,848,493	399,229,141
1960	1,724	882,938	392,907,905	305,449,869	24,326,501	430,164,797
1961	1,743	900,437	422,335,290	318,688,472	29,257,960	466,813,249
1962	1,733	945,297	453,998,296	358,642,014	30,696,368	502,350,314
1963	1,712	956,471	483,843,875	380,385,535	32,365,053	533,203,257
1964	1,738	1,001,934	531,511,067	415,684,994	35,344,072	585,656,990
1965	1,734	1,104,057	574,391,597	460,645,005	39,173,168	634,093,891
1966	1,741	1,099,476	612,676,681	502,033,576	43,330,379	678,091,757
1967	1,746	1,134,235	654,369,492	528,250,814	46,952,070	724,200,341
1968	1,734	1,167,813	697,822,502	583,620,587	51,510,319	773,896,196
1969	1,714	1,202,162	740,423,255	632,437,308	56,110,403	822,834,307
1970	1,690	1,217,451	797,357,312	656,290,537	61,104,432	889,182,145
1971	1,655	1,238,130	892,058,909	712,043,171	65,802,050	992,379,033
1972	1,650	1,293,086	1,006,818,038	794,627,458	73,546,627	1,120,154,129
1973	1,641	1,351,233	1,112,669,511	903,788,471	81,528,518	1,254,858,248
1974	1,633	1,409,005	1,223,912,290	989,921,617	89,338,920	1,389,376,613
1975	1,585	1,449,211	1,456,858,046	1,117,552,783	121,067,436	1,611,945,998
1976	1,554	1,518,528	1,636,204,890	1,359,188,534	111,451,282	1,868,815,370
1977	1,510	1,597,675	1,922,063,866	1,636,525,113	124,897,215	2,199,600,038
1978	1,476	1,714,823	2,156,469,115	1,953,917,404	136,934,507	2,461,226,067
1979	1,444	1,765,665	2,286,353,192	2,138,376,000	146,234,000	2,616,991,654
1980	1,392	1,807,317	2,477,508,000	1,962,012,000	184,208,000	2,734,388,000
1981	1,340	1,822,615	2,581,322,513	1,983,602,000	190,965,000	2,860,548,235
1982	1,282	1,826,249	3,063,059,114	1,937,523,000	162,923,000	3,336,481,994
1983	1,231	1,843,570	3,652,013,975	2,162,050,000	173,097,000	3,951,059,615
1984	1,175	1,909,886	4,192,090,132	2,661,620,380	190,705,407	4,530,583,093
1985	1,142	2,026,091	5,167,411,589	2,892,408,192	210,957,814	5,671,101,854
1986	1,074	2,035,119	6,314,438,248	3,144,746,140	236,700,324	6,992,438,321
1987	1,026	2,132,105	6,805,142,728	3,361,933,816	257,530,548	7,750,523,723
1988	992	2,181,608	7,018,286,166	3,867,591,254	333,874,618	8,012,229,689
1989	949	2,239,819	7,107,919,381	4,362,138,701	335,359,942	8,090,611,506
1990	905	2,328,176	7,665,491,650	4,670,703,577	575,405,876	8,718,598,922
1991	856	2,329,917	8,468,223,846	4,770,538,832	645,419,182	9,588,170,383
1992	814	2,393,188	9,326,659,308	4,828,069,108	761,813,210	10,138,972,565
1993	774	2,419,685	9,828,922,634	5,225,331,539	893,067,164	10,775,328,850
1994	737	2,455,548	10,009,356,227	6,191,341,475	974,343,666	11,174,648,671
1995	707	2,493,541	10,299,151,517	6,721,310,283	1,114,953,646	11,536,096,898
1996	690	2,556,291	10,815,481,773	7,511,523,673	1,236,101,973	12,162,341,007
1997	665	2,602,319	11,409,074,802	8,265,056,309	1,372,344,642	12,948,279,587
1998	633	2,646,266	12,578,657,865	8,638,135,008	1,499,331,003	14,436,975,630
1999	613	2,692,807	13,270,026,441	9,601,273,112	1,629,054,391	15,228,149,051
2000	590	2,695,377	13,778,792,797	10,441,305,310	1,783,684,794	15,875,653,367
2001	569	2,678,441	15,590,280,029	10,741,675,527	1,954,303,369	17,767,767,175
2002	544	2,680,918	17,110,035,285	11,016,464,677	2,138,348,319	19,555,075,596
2003	517	2,614,234	18,166,095,899	11,753,366,627	2,251,516,857	20,825,827,593
2004	487	2,631,604	18,984,912,473	12,991,296,435	2,412,363,687	21,839,260,684
2005	474	2,618,327	19,110,966,461	14,162,195,321	2,526,000,389	22,106,735,584
2006	454	2,713,996	21,523,939,230	15,420,573,386	2,884,070,410	24,891,478,101
2007	438	2,697,665	22,204,550,539	16,260,633,659	3,058,624,326	26,133,444,229
2008	424	2,739,952	24,871,104,251	17,835,911,279	3,210,280,069	29,250,790,295
2009	403	2,784,449	28,075,230,160	18,680,065,028	3,263,172,755	32,664,408,294
2010	387	2,796,586	29,771,784,659	18,542,298,044	3,440,482,646	34,019,703,725
2011	368	2,822,958	31,143,159,957	18,903,518,298	3,620,869,844	35,674,016,833
2012	353	2,874,912	32,571,042,188	19,643,719,107	3,802,771,518	37,082,366,430
2013	333	2,889,382	32,693,015,582	20,933,737,091	3,882,697,018	37,350,259,173
2014	307	2,933,328	33,061,415,284	22,739,045,568	4,160,700,912	38,140,106,969
2015	291	3,016,267	34,991,595,526	24,506,225,107	4,311,651,724	40,265,835,528
2016	280	3,082,840	37,112,481,605	27,132,679,464	4,558,303,415	42,601,411,487

* Beginning 1990, Reserves includes undivided earnings.

Illinois State Statistics

Year	# of CUs	# of Memberships	Savings (\$)	Loans (\$)	Reserves (\$)*	Assets (\$)
1939	574	222,735	18,461,461	14,929,581		19,912,528
1940	644	268,237	24,378,862	20,332,981		26,393,611
1941	712	314,912	31,122,324	22,940,514		33,565,757
1942	713	298,306		14,725,602		
1943	673	284,180		11,488,074		
1944	645	237,539	37,194,738	11,512,268	2,748,624	40,879,845
1945	646	279,439	40,916,294	12,425,911	2,746,120	44,617,821
1946	676	301,974	48,819,129	17,673,653	2,910,381	52,367,278
1947	693	335,265	58,459,038	25,221,070	3,363,445	62,898,490
1948	739	400,588	67,353,707	34,337,745	4,394,385	72,569,625
1949	774	379,253	73,828,814	43,191,026	4,974,850	80,885,713
1950	815	409,413	84,862,757	56,577,306	6,348,133	93,481,264
1951	903	445,725	100,516,272	60,338,363	7,530,236	109,216,363
1952	1,015	491,384	122,646,287	76,116,409	4,628,588	133,280,666
1953	1,125	526,408	146,012,305	97,726,613	7,859,846	159,676,878
1954	1,202	559,729	167,823,184	111,953,651	9,417,072	184,308,704
1955	1,275	602,381	196,425,058	140,425,188	11,219,602	218,517,013
1956	1,343	647,868	228,488,250	160,292,904	13,238,306	252,946,324
1957	1,448	691,634	261,017,795	190,389,634	15,421,433	289,371,191
1958	1,505	731,708	287,123,376	204,985,174	17,824,884	317,041,231
1959	1,520	765,772	317,885,710	239,795,841	19,652,829	351,700,104
1960	1,531	776,406	346,173,720	270,178,434	21,736,520	377,812,340
1961	1,526	785,891	370,537,303	280,644,797	26,193,875	409,028,091
1962	1,476	821,117	397,963,987	316,119,278	27,229,641	439,752,999
1963	1,418	823,004	422,882,124	334,279,416	28,394,193	465,203,510
1964	1,401	851,803	462,314,067	362,598,994	30,732,072	507,435,990
1965	1,370	941,794	497,067,597	399,739,005	33,825,168	546,913,891
1966	1,353	924,189	527,521,681	434,239,576	37,229,379	581,930,757
1967	1,339	950,924	562,204,492	457,478,814	40,236,070	620,553,341
1968	1,293	970,567	596,363,502	501,684,587	43,840,319	659,343,196
1969	1,276	993,754	630,794,255	538,336,308	47,411,403	698,325,307
1970	1,254	1,004,914	682,778,312	558,780,537	51,354,432	757,242,145
1971	1,226	1,021,252	760,796,909	604,048,171	55,503,050	843,929,033
1972	1,208	1,064,933	857,209,038	673,706,458	62,147,627	950,724,129
1973	1,196	1,112,321	943,675,511	765,069,471	69,172,518	1,062,901,248
1974	1,197	1,160,431	1,036,405,290	836,295,617	75,540,920	1,176,701,613
1975	1,159	1,186,187	1,233,330,046	943,605,783	106,168,436	1,360,404,998
1976	1,131	1,209,996	1,347,380,890	1,124,020,534	93,517,282	1,544,393,370
1977	1,093	1,267,799	1,583,493,866	1,346,840,113	104,904,215	1,815,048,038
1978	1,063	1,354,048	1,769,843,115	1,606,083,404	117,317,507	2,023,981,067
1979	1,035	1,406,798	1,886,043,192	1,762,501,000	125,960,000	2,161,386,654
1980	996	1,432,594	2,050,300,000	1,617,661,000	161,286,000	2,262,949,000
1981	960	1,446,075	2,136,733,513	1,630,919,000	166,266,000	2,367,852,235
1982	924	1,444,328	2,533,064,114	1,574,659,000	136,381,000	2,756,229,994
1983	891	1,457,845	3,020,213,975	1,737,450,000	144,375,000	3,262,759,615
1984	854	1,416,832	3,109,439,000	1,900,603,000	148,635,000	3,364,952,000
1985	830	1,525,099	3,884,233,122	2,096,593,832	165,286,292	4,294,623,651
1986	781	1,546,339	4,827,863,775	2,316,041,071	190,324,819	5,401,187,600
1987	746	1,616,767	5,209,853,446	2,445,172,376	206,535,523	6,037,802,837
1988	723	1,639,447	5,329,839,424	2,747,590,191	264,665,623	6,171,678,531
1989	696	1,691,709	5,362,972,608	3,153,477,009	268,540,820	6,187,964,558
1990	661	1,757,543	5,773,627,701	3,407,881,303	421,551,074	6,647,813,315
1991	628	1,745,575	6,324,456,800	3,473,568,314	471,238,427	7,246,849,213
1992	602	1,791,078	6,907,058,731	3,474,905,286	556,448,941	7,488,453,232
1993	568	1,786,027	7,125,590,672	3,684,407,197	648,447,452	7,806,356,072
1994	544	1,802,089	7,189,825,936	4,312,375,095	703,504,713	7,954,102,754
1995	519	1,823,623	7,306,935,376	4,658,611,262	804,041,245	8,165,298,672
1996	504	1,879,939	7,642,800,334	5,206,116,875	891,483,075	8,579,310,552
1997	497	2,015,705	8,369,220,880	5,989,029,962	1,027,399,504	9,468,163,210
1998	475	2,071,285	9,308,522,186	6,253,243,971	1,130,455,242	10,760,280,067
1999	463	2,131,852	9,901,052,911	7,033,732,206	1,236,530,410	11,313,443,802
2000	449	2,369,327	12,144,193,742	9,398,990,717	1,561,453,622	13,946,212,122
2001	434	2,363,717	13,823,861,826	9,706,262,731	1,722,439,297	15,695,063,319
2002	414	2,365,190	15,118,462,970	9,962,495,574	1,890,721,395	17,248,391,355
2003	392	2,300,998	16,028,300,435	10,667,690,962	1,988,875,053	18,356,958,763
2004	369	2,310,048	16,635,437,084	11,780,298,504	2,121,902,663	19,122,293,889
2005	356	2,296,377	16,780,883,665	12,856,347,067	2,223,952,754	19,449,591,514
2006	340	2,288,574	17,239,362,973	13,443,322,735	2,327,016,660	20,025,299,869
2007	329	2,278,499	17,933,007,280	14,264,895,199	2,464,165,728	21,245,323,863
2008	318	2,319,902	20,155,837,178	15,794,759,087	2,560,853,838	23,836,645,988
2009	299	2,362,405	22,862,788,811	16,556,872,572	2,605,734,246	26,610,932,163
2010	287	2,376,999	24,341,500,985	16,496,712,932	2,754,226,615	27,882,856,976
2011	278	2,414,314	25,659,816,005	16,874,453,755	2,894,179,820	29,444,938,942
2012	267	2,505,973	27,169,780,615	17,795,762,962	3,081,544,719	30,942,048,402
2013	254	2,545,313	27,371,202,189	19,100,669,085	3,176,096,864	31,307,717,108
2014	234	2,593,092	27,792,587,845	20,840,078,687	3,428,951,279	32,128,090,994
2015	222	2,646,290	29,534,876,865	22,326,131,791	3,543,032,180	34,008,273,040
2016	211	2,711,348	31,609,923,908	24,869,587,335	3,753,932,617	36,270,265,126

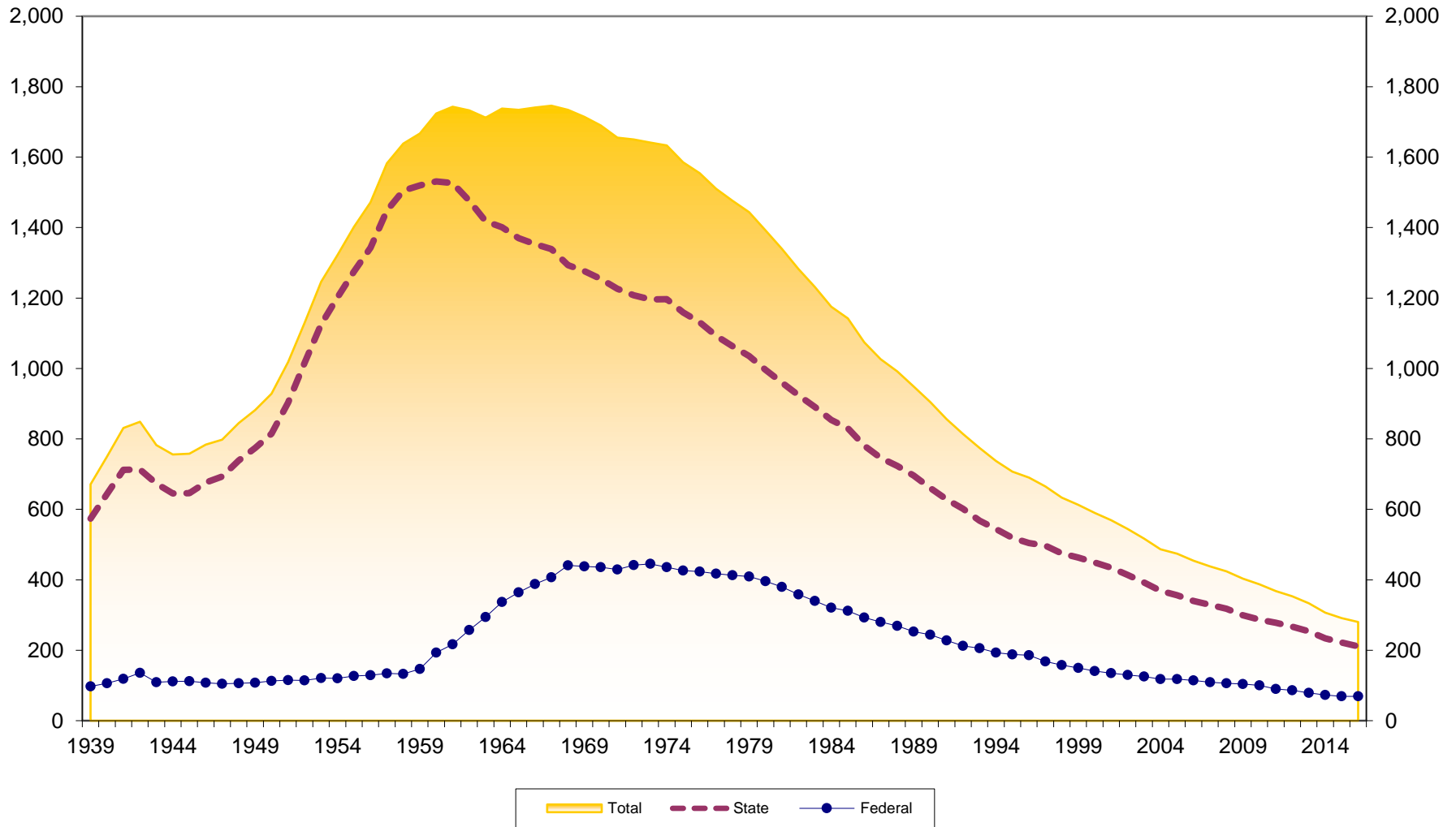
* Beginning 1990, Reserves includes undivided earnings.

Illinois Federal Statistics

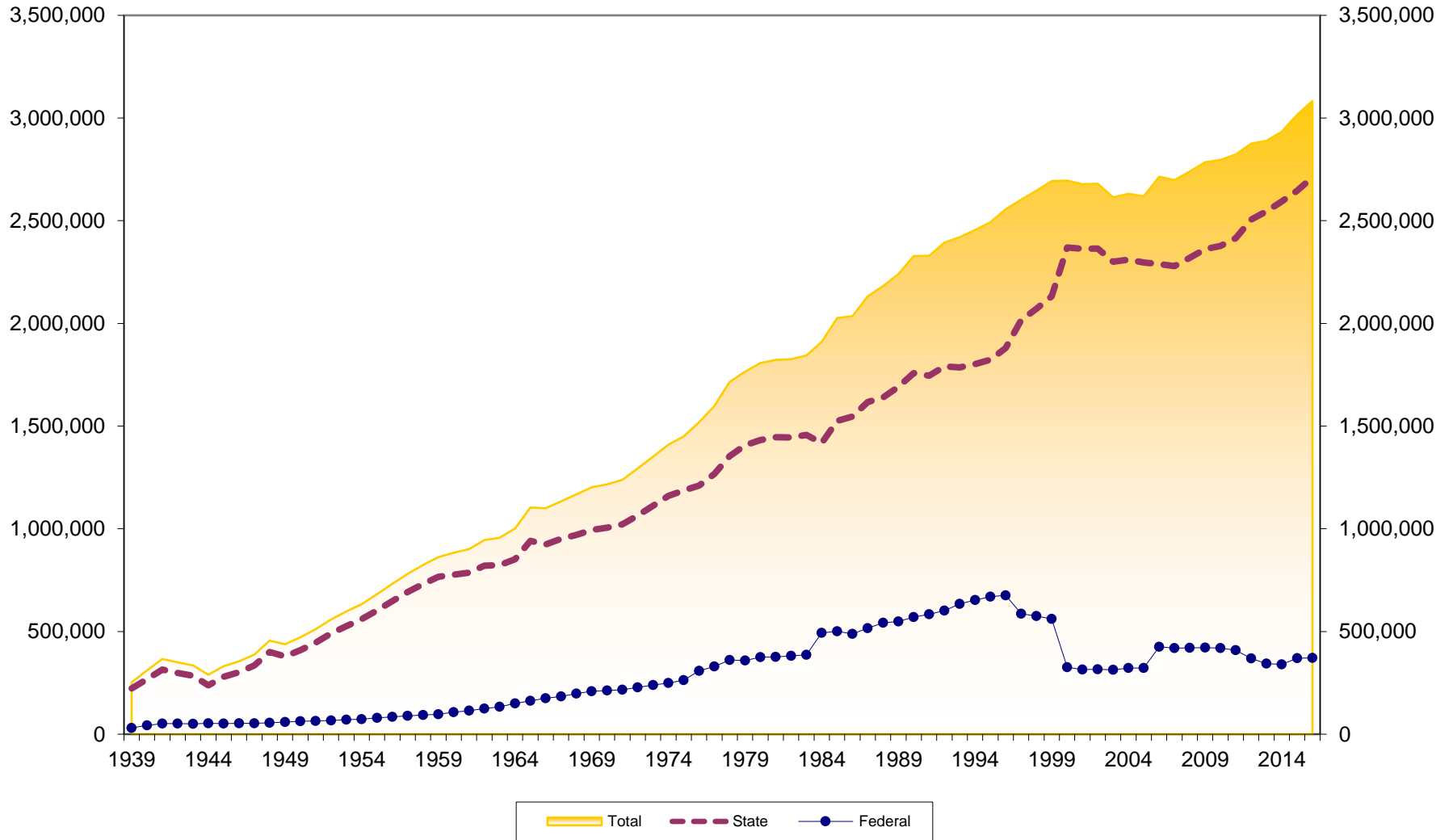
Year	# of CUs	# of Memberships	Savings (\$)	Loans (\$)	Reserves (\$)*	Assets (\$)
1939	97	30,739	1,613,161	1,436,140	34,740	1,776,054
1940	106	42,572	2,823,000	2,592,000		3,117,000
1941	119	51,579	4,060,321	3,192,000		4,413,000
1942	136	51,630	4,373,992	2,313,377	145,964	4,763,795
1943	109	50,166	4,599,154	1,721,000		4,983,000
1944	111	52,493	5,327,818	1,623,324	175,654	5,787,072
1945	112	51,391	6,228,350	1,585,311	185,413	6,632,968
1946	108	52,800	7,094,262	2,375,254	203,507	7,549,914
1947	105	52,678	8,010,049	3,213,945	236,290	8,592,391
1948	106	55,483	9,385,649	4,544,765	290,264	10,091,494
1949	108	58,779	10,836,940	5,948,835	345,253	11,745,824
1950	113	62,642	12,769,710	7,480,777	437,351	13,859,855
1951	115	64,575	14,513,393	7,635,985	520,692	15,754,552
1952	114	66,809	16,859,104	9,344,974	607,085	18,342,702
1953	121	70,995	20,071,022	12,408,402	741,142	22,166,023
1954	120	73,105	22,661,662	13,781,262	864,383	24,830,529
1955	127	79,163	26,027,501	16,560,077	1,030,541	28,760,985
1956	129	84,277	29,828,333	19,090,042	1,278,801	33,237,367
1957	134	89,151	33,637,380	22,396,086	1,540,614	37,683,393
1958	133	92,783	38,324,513	24,664,942	1,818,413	42,473,602
1959	147	96,709	42,394,979	29,173,194	2,195,664	47,529,037
1960	193	106,532	46,734,185	35,271,435	2,589,981	52,352,457
1961	217	114,546	51,797,987	38,043,675	3,064,085	57,785,158
1962	257	124,180	56,034,309	42,522,736	3,466,727	62,597,315
1963	294	133,467	60,961,751	46,106,119	3,970,860	67,999,747
1964	337	150,131	69,197,000	53,086,000	4,612,000	78,221,000
1965	364	162,263	77,324,000	60,906,000	5,348,000	87,180,000
1966	388	175,287	85,155,000	67,794,000	6,101,000	96,161,000
1967	407	183,311	92,165,000	70,772,000	6,716,000	103,647,000
1968	441	197,246	101,459,000	81,936,000	7,670,000	114,553,000
1969	438	208,408	109,629,000	94,101,000	8,699,000	124,509,000
1970	436	212,537	114,579,000	97,510,000	9,750,000	131,940,000
1971	429	216,878	131,262,000	107,995,000	10,299,000	148,450,000
1972	442	228,153	149,609,000	120,921,000	11,399,000	169,430,000
1973	445	238,912	168,994,000	138,719,000	12,356,000	191,957,000
1974	436	248,574	187,507,000	153,626,000	13,798,000	212,675,000
1975	426	263,024	223,528,000	173,947,000	14,899,000	251,541,000
1976	423	308,532	288,824,000	235,168,000	17,934,000	324,422,000
1977	417	329,876	338,570,000	289,685,000	19,993,000	384,552,000
1978	413	360,775	386,626,000	347,834,000	19,617,000	437,245,000
1979	409	358,867	400,310,000	375,875,000	20,274,000	455,605,000
1980	396	374,723	427,208,000	344,351,000	22,922,000	471,439,000
1981	380	376,540	444,589,000	352,683,000	24,699,000	492,696,000
1982	358	381,921	529,995,000	362,864,000	26,542,000	580,252,000
1983	340	385,725	631,800,000	424,600,000	28,722,000	688,300,000
1984	321	493,054	1,082,651,132	761,017,380	42,070,407	1,165,631,093
1985	312	500,992	1,283,178,467	795,814,360	45,671,522	1,376,478,203
1986	293	488,780	1,486,574,473	828,705,069	46,375,505	1,591,250,721
1987	280	515,338	1,595,289,282	916,761,440	50,995,025	1,712,720,886
1988	269	542,161	1,688,446,742	1,120,001,063	69,208,995	1,840,551,158
1989	253	548,110	1,744,946,773	1,208,661,692	66,819,122	1,902,646,948
1990	244	570,633	1,891,863,949	1,262,822,274	153,854,802	2,070,785,607
1991	228	584,342	2,143,767,046	1,296,970,518	174,180,755	2,341,321,170
1992	212	602,110	2,419,600,577	1,353,163,822	205,364,269	2,650,519,333
1993	206	633,658	2,703,331,962	1,540,924,342	244,619,712	2,968,972,778
1994	193	653,459	2,819,530,291	1,878,966,380	270,838,953	3,220,545,917
1995	188	669,918	2,992,216,141	2,062,699,021	310,912,401	3,370,798,226
1996	186	676,352	3,172,681,439	2,305,406,798	344,618,898	3,583,030,455
1997	168	586,614	3,039,853,922	2,276,026,347	344,945,138	3,480,116,377
1998	158	574,981	3,270,135,679	2,384,891,037	368,875,761	3,676,695,563
1999	150	560,955	3,368,973,530	2,567,540,906	392,523,981	3,914,705,249
2000	141	326,050	1,634,599,055	1,042,314,593	222,231,172	1,929,441,245
2001	135	314,724	1,766,418,203	1,035,412,796	231,864,072	2,072,703,856
2002	130	315,728	1,991,572,315	1,053,969,103	247,626,924	2,306,684,241
2003	125	313,236	2,137,795,464	1,085,675,665	262,641,804	2,468,868,830
2004	118	321,556	2,349,475,389	1,210,997,931	290,461,024	2,716,966,795
2005	118	321,950	2,330,082,796	1,305,848,254	302,047,635	2,657,144,070
2006	114	425,422	4,284,576,257	1,977,250,651	557,053,750	4,866,178,232
2007	109	419,166	4,271,543,259	1,995,738,460	594,458,598	4,888,120,366
2008	106	420,050	4,715,267,073	2,041,152,192	649,426,231	5,414,144,307
2009	104	422,044	5,212,441,349	2,123,192,456	657,438,509	6,053,476,131
2010	100	419,587	5,430,283,674	2,045,585,112	686,256,031	6,136,846,749
2011	90	408,644	5,483,343,952	2,029,064,543	726,690,024	6,229,077,891
2012	86	368,939	5,401,261,573	1,847,956,145	721,226,799	6,140,318,028
2013	79	344,069	5,321,813,393	1,833,068,006	706,600,154	6,042,542,065
2014	73	340,236	5,268,827,439	1,898,966,881	731,749,633	6,012,015,975
2015	69	369,977	5,456,718,661	2,180,093,316	768,619,544	6,257,562,488
2016	69	371,492	5,502,557,697	2,263,092,129	804,370,798	6,331,146,361

* Beginning 1990, Reserves includes undivided earnings.

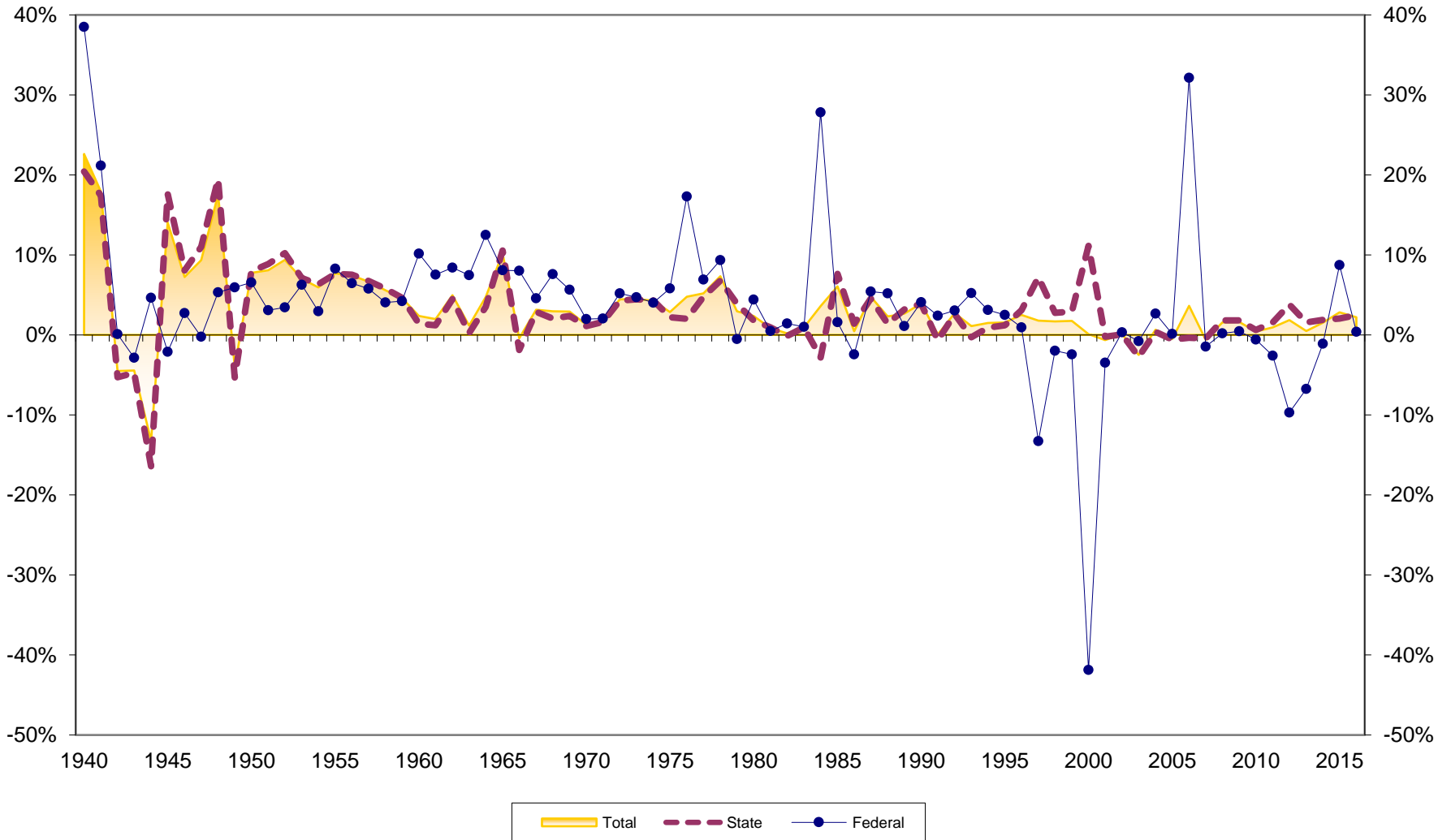
Number of Illinois Credit Unions 1939-2016



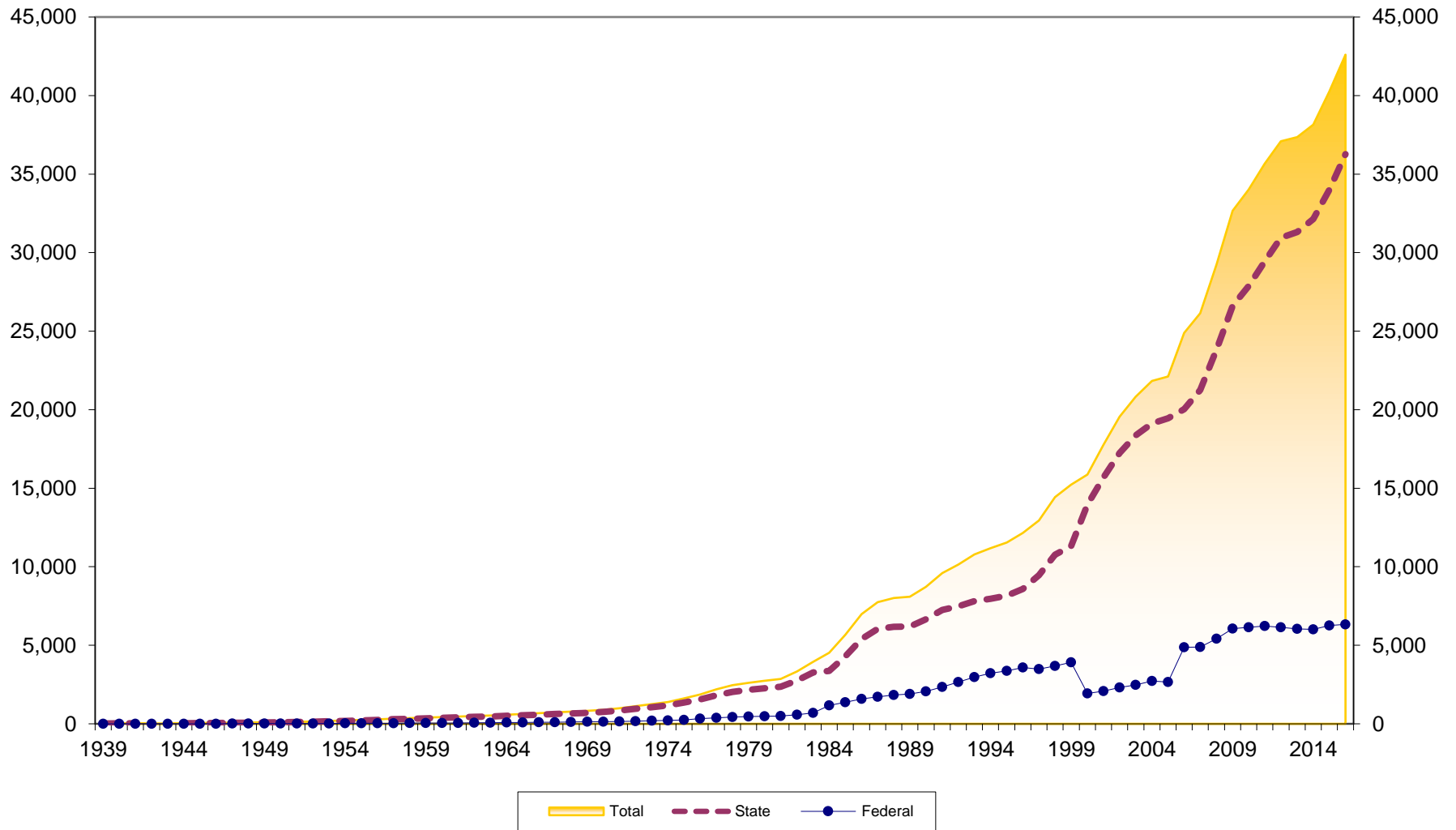
Number of Memberships at Illinois Credit Unions 1939-2016



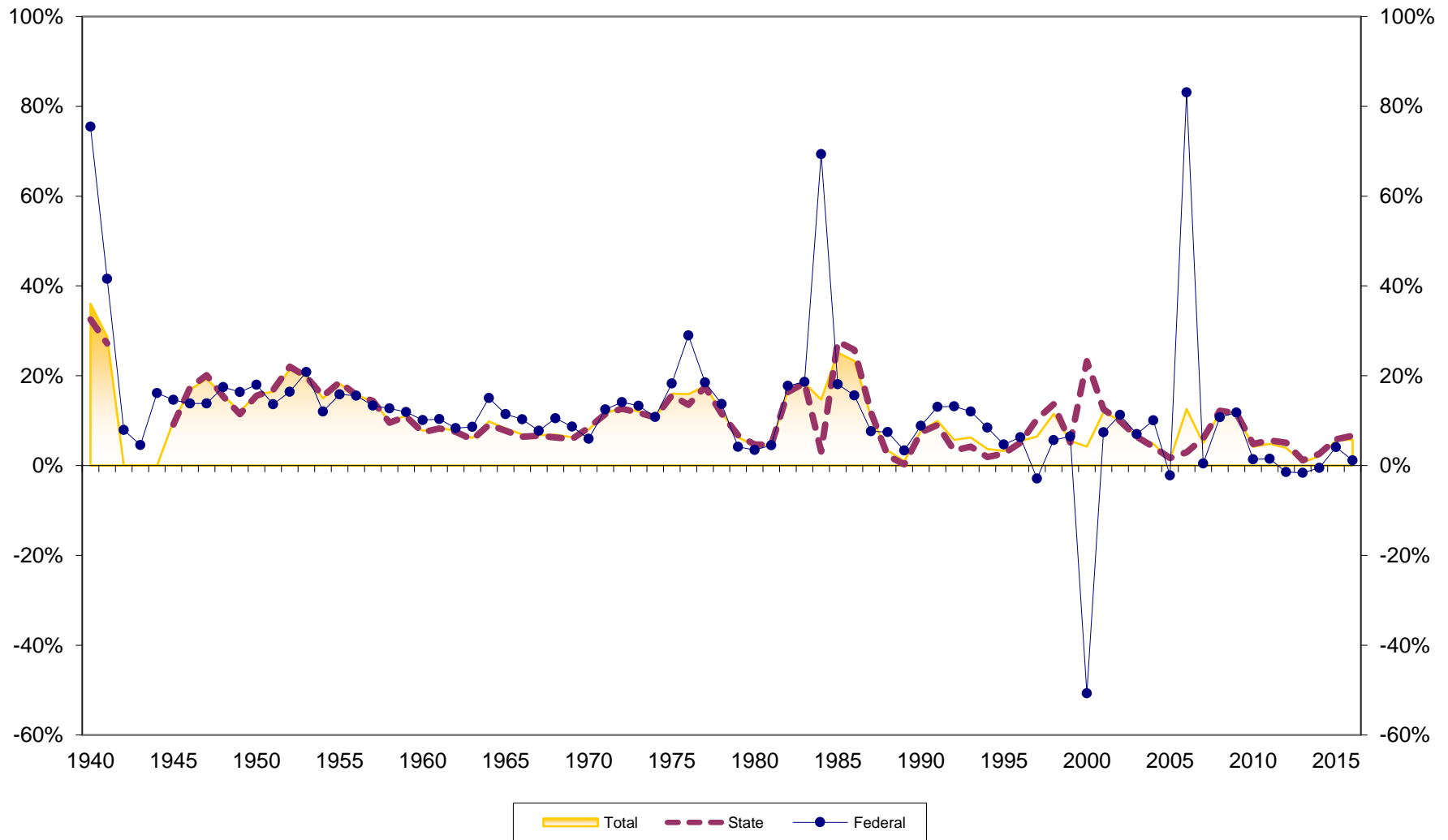
Membership Growth at Illinois Credit Unions 1940-2016



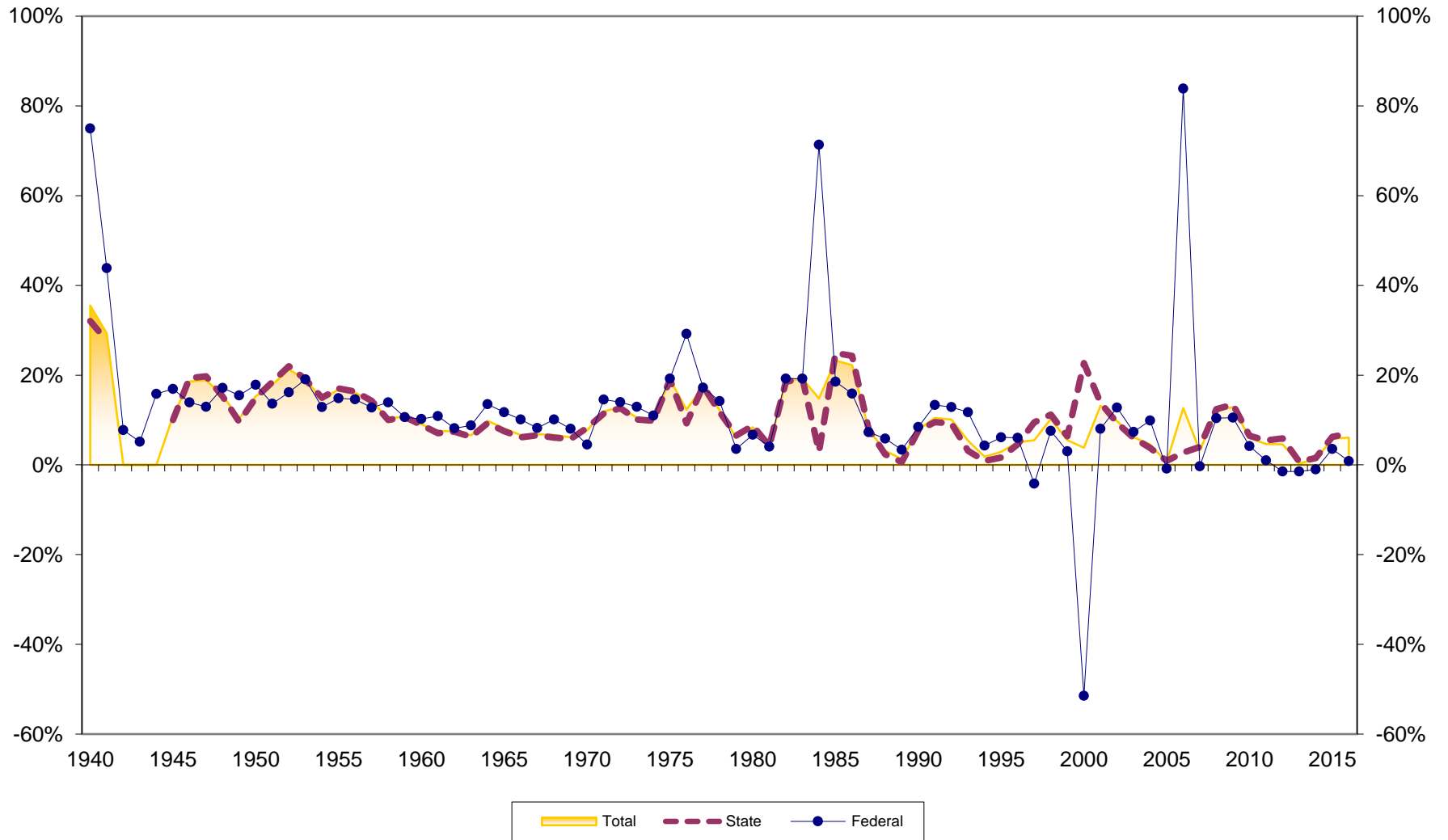
Assets at Illinois Credit Unions (in \$Millions) 1939-2016



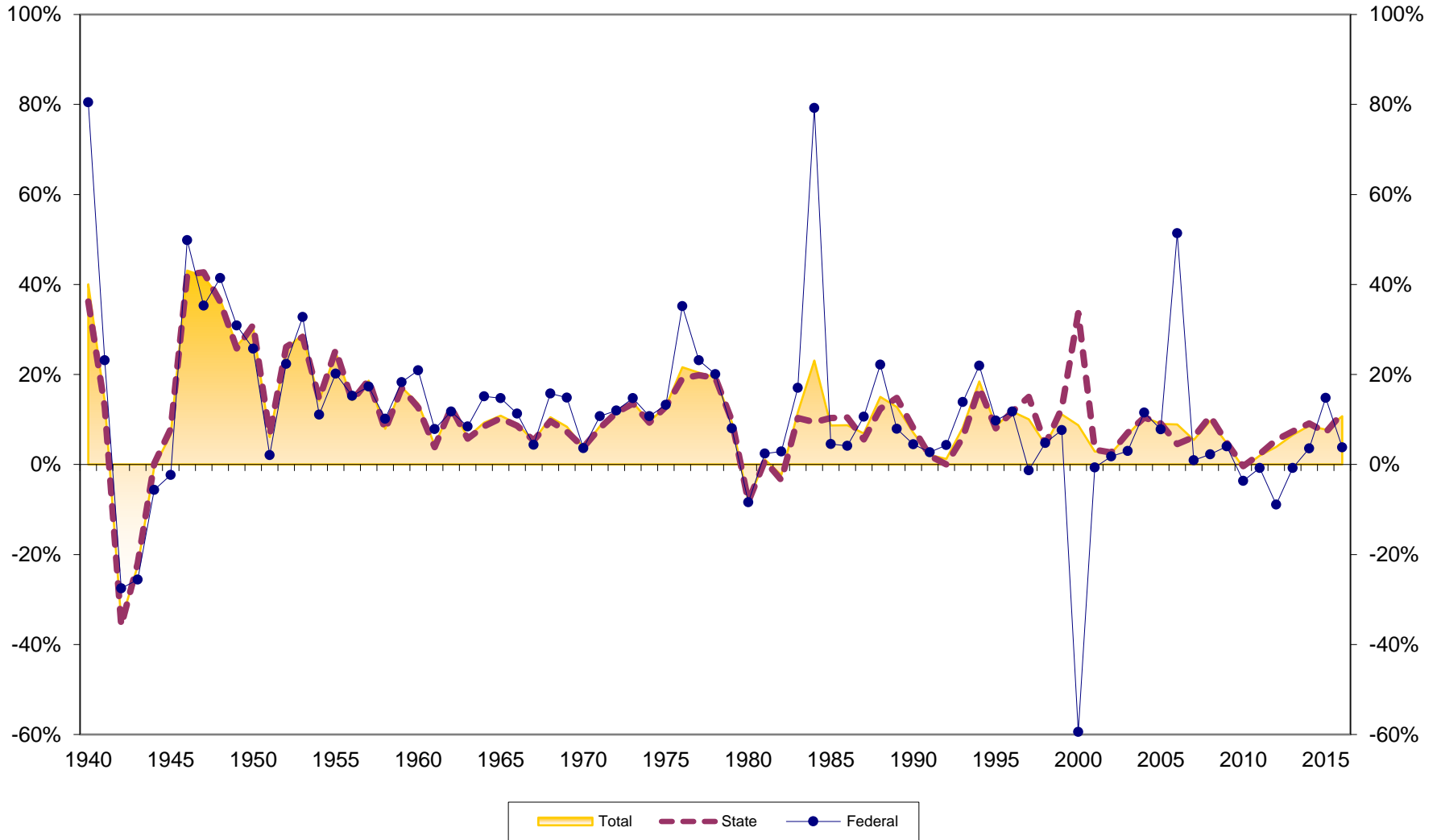
Asset Growth at Illinois Credit Unions 1940-2016



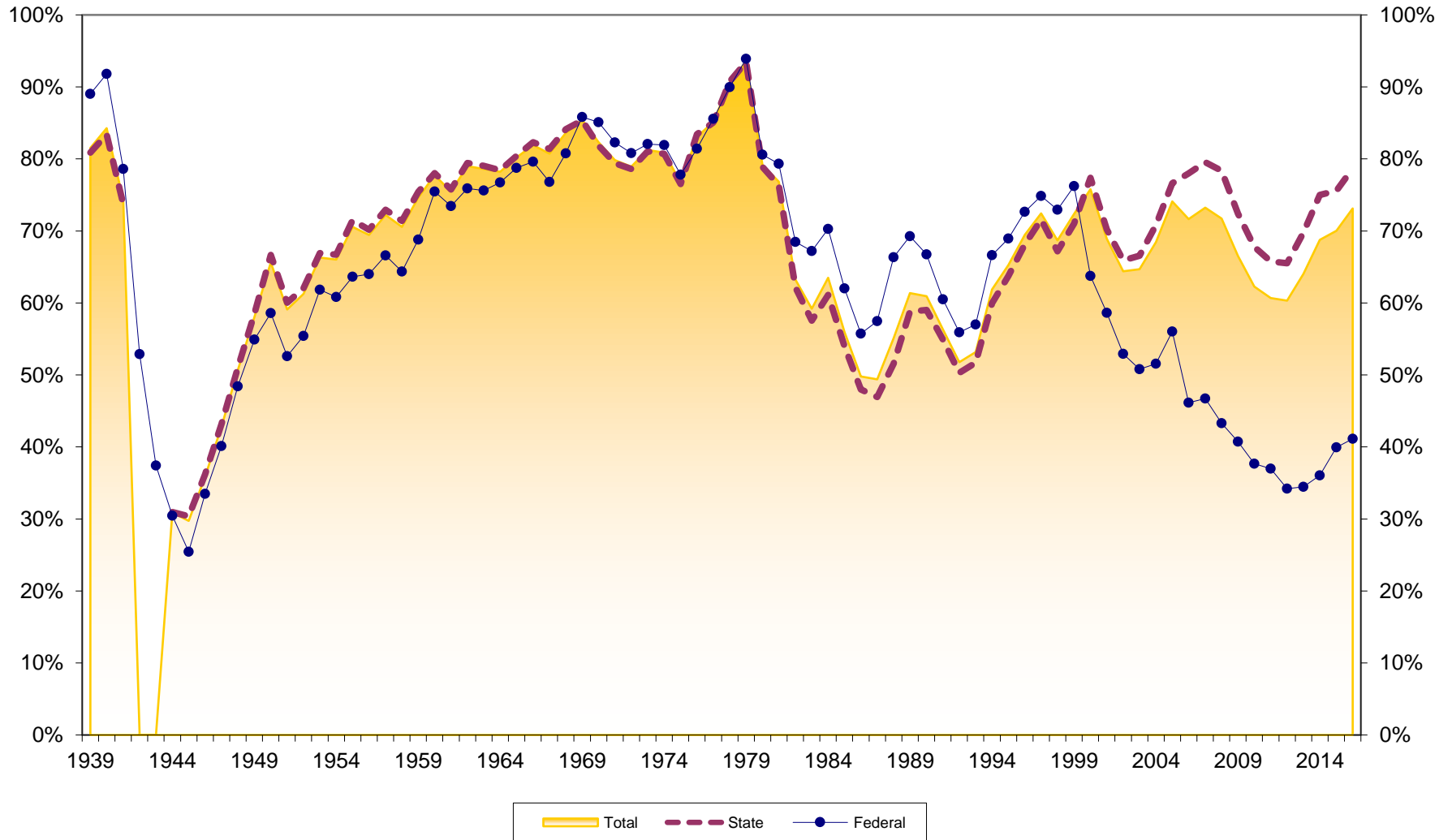
Savings Growth at Illinois Credit Unions 1940-2016



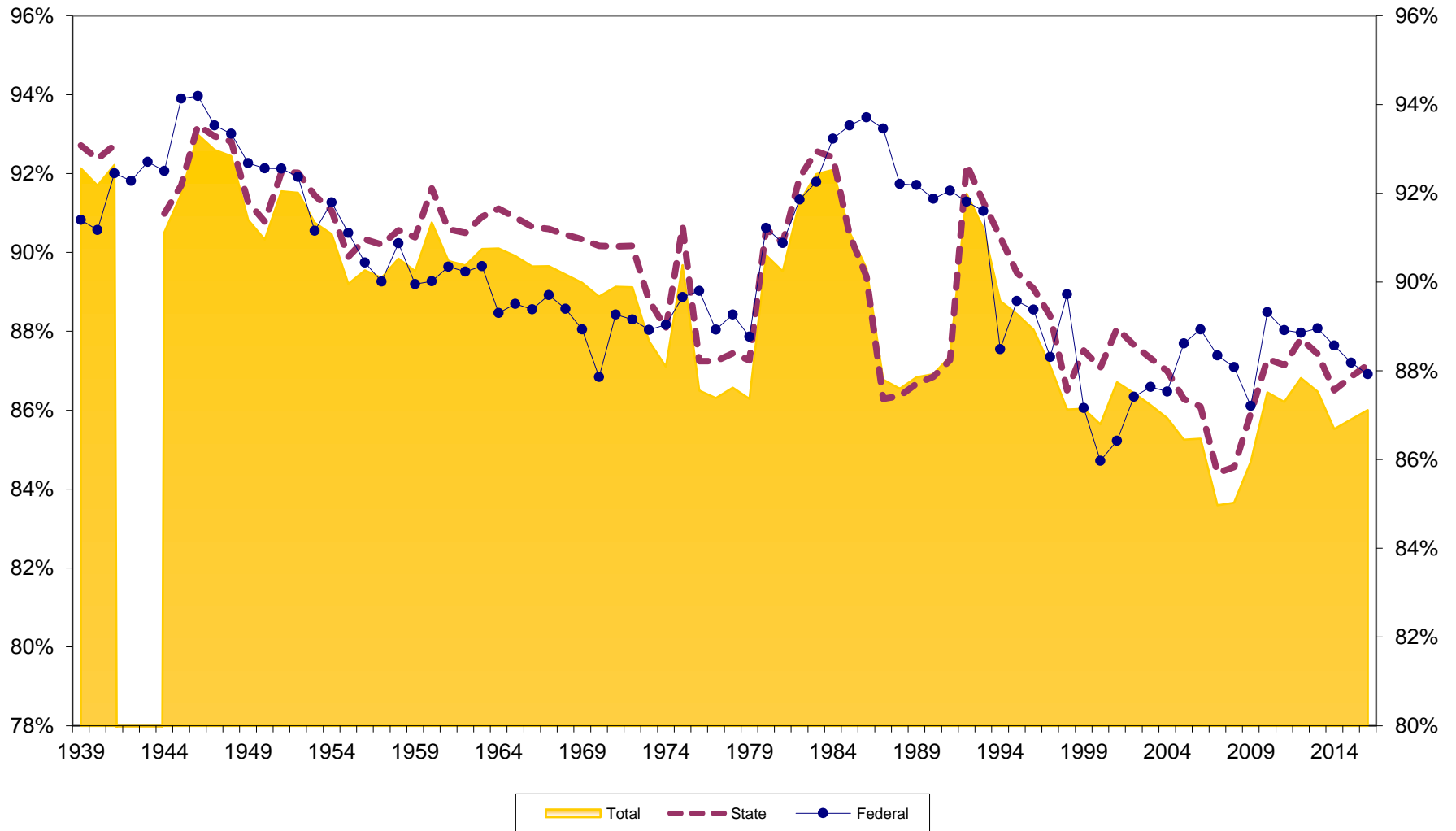
Loan Growth at Illinois Credit Unions 1940-2016



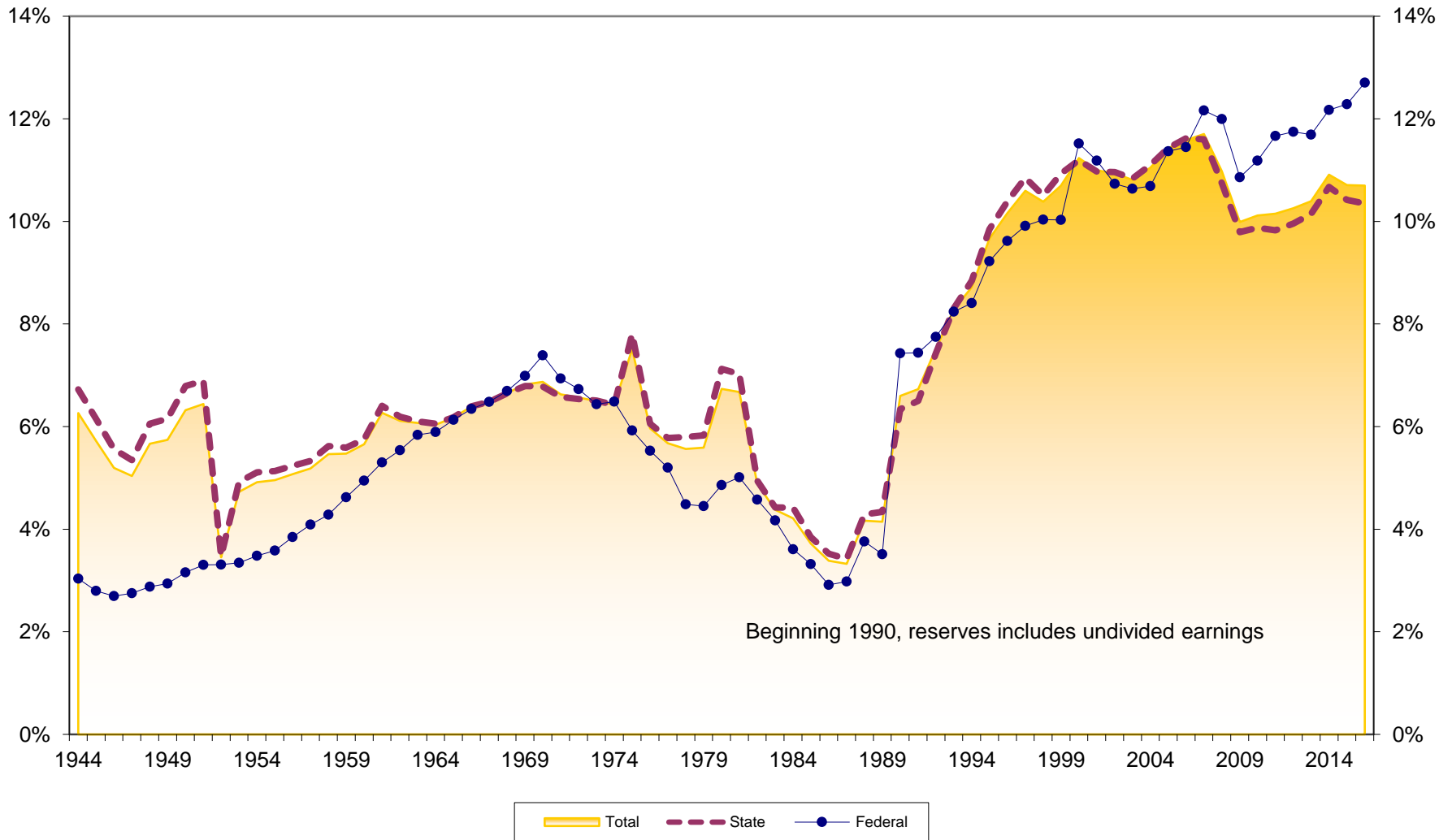
Loans to Savings at Illinois Credit Unions 1939-2016



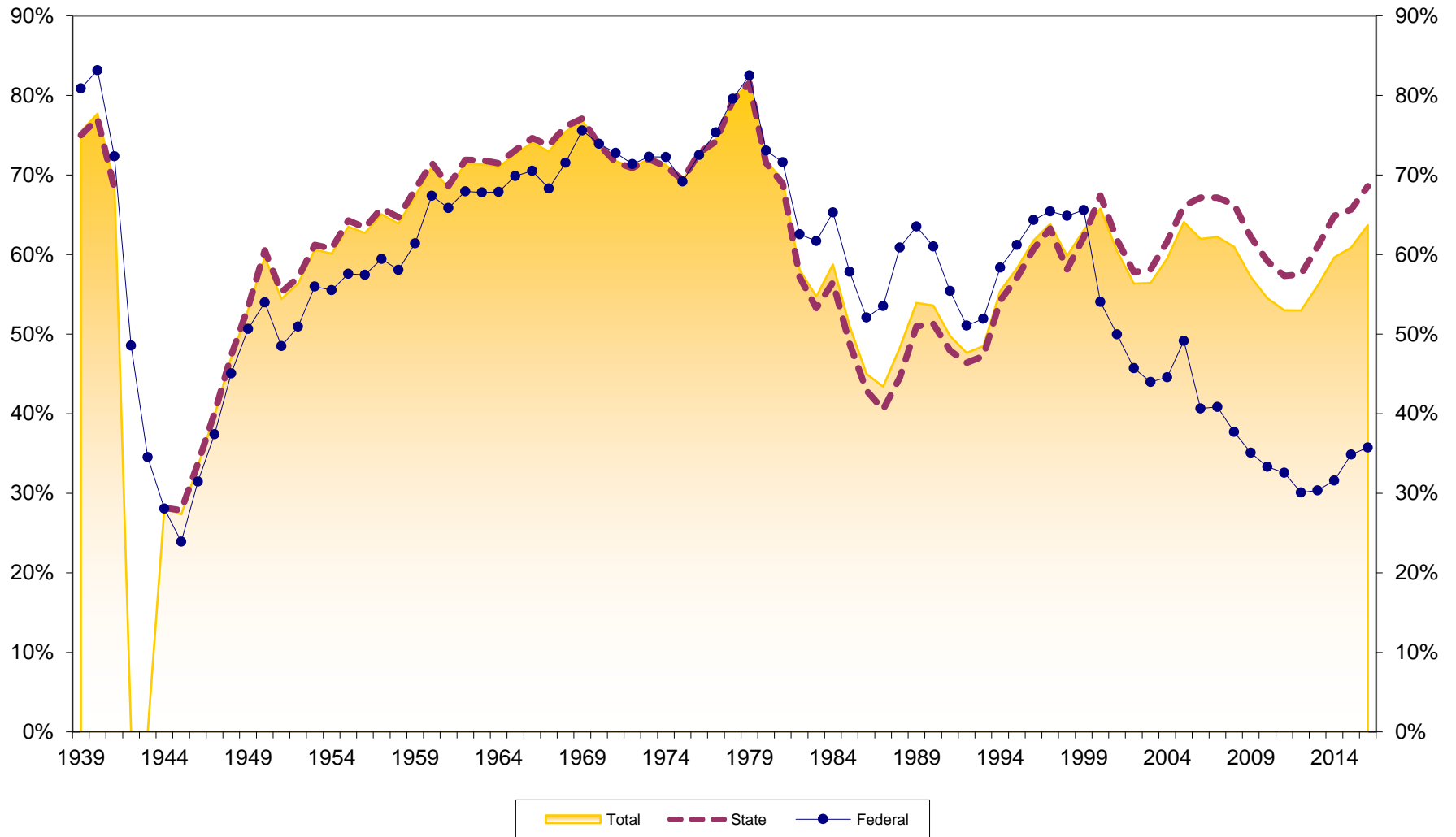
Savings to Assets at Illinois Credit Unions 1939-2016



Reserves to Assets at Illinois Credit Unions 1944-2016



Loans to Assets at Illinois Credit Unions 1939-2016



Dollar Asset Growth at Illinois Credit Unions (in \$Millions) 1940-2016

