

Kansas Totals Statistics

Year	# of CUs	# of Memberships	Savings (\$)	Loans (\$)	Reserves (\$)*	Assets (\$)
1939	96	16,636	1,122,478	1,016,047	45,269	1,248,433
1940	126	21,272	1,523,938	1,494,910	0	1,718,557
1941	138	26,749	2,068,683	1,832,090	0	2,315,206
1942	145	28,889	378,333	1,319,197	11,447	408,385
1943	133	38,162	431,407	1,092,536	0	463,000
1944	117	27,914	2,805,222	1,071,793	143,798	3,059,167
1945	112	25,068	3,104,637	1,082,077	125,397	3,372,538
1946	114	26,437	3,605,350	1,779,831	143,798	3,926,380
1947	123	29,921	4,561,123	2,973,836	159,541	4,982,118
1948	126	35,284	5,668,309	4,020,269	245,454	6,192,896
1949	134	38,961	6,895,395	5,323,146	218,122	7,627,366
1950	142	44,524	8,258,535	6,849,147	267,660	9,219,267
1951	154	50,557	10,014,686	7,132,073	340,719	11,040,067
1952	177	61,292	9,932,979	9,523,820	418,185	14,148,835
1953	193	66,987	16,302,456	13,477,298	512,630	18,120,872
1954	215	78,209	19,886,912	16,516,755	648,590	22,135,196
1955	230	87,540	24,021,588	21,189,042	833,731	27,131,643
1956	242	97,066	28,883,823	25,144,720	1,041,364	32,737,639
1957	265	107,016	34,454,852	30,555,360	1,201,013	39,215,534
1958	289	119,331	42,545,771	35,378,325	1,488,127	48,198,331
1959	286	128,756	49,579,745	43,486,636	2,119,459	55,375,374
1960	282	140,953	57,564,563	50,407,592	2,631,999	64,477,369
1961	290	150,055	67,559,639	57,020,675	3,236,930	75,510,786
1962	306	162,430	76,988,340	66,311,157	3,959,382	86,945,394
1963	312	170,284	87,513,430	75,745,737	4,477,204	98,372,675
1964	310	182,790	99,112,939	84,361,828	5,396,285	111,171,219
1965	305	186,970	107,875,423	95,904,371	6,106,598	122,263,697
1966	304	199,076	115,863,390	106,965,564	7,120,805	132,599,277
1967	311	211,650	125,982,240	115,897,287	8,130,001	144,951,580
1968	318	223,267	139,096,877	129,174,441	9,295,493	159,699,133
1969	322	236,091	151,966,869	148,227,102	10,737,335	175,706,219
1970	291	238,538	168,899,337	153,427,364	13,411,442	194,343,427
1971	284	253,947	176,854,654	160,865,536	15,267,710	204,790,618
1972	282	270,462	205,214,340	183,922,695	17,967,688	236,890,611
1973	276	297,649	237,988,677	221,572,848	18,553,890	280,771,691
1974	274	312,694	259,437,153	246,432,904	20,995,590	318,730,932
1975	259	336,107	310,280,140	296,903,625	24,977,276	373,790,883
1976	258	361,328	372,357,125	373,876,959	25,657,207	447,553,712
1977	246	395,812	437,703,855	447,872,811	29,106,381	522,891,159
1978	249	427,610	483,932,909	482,900,035	29,342,893	574,626,052
1979	246	469,907	564,898,131	528,462,383	33,487,824	639,057,183
1980	240	482,665	620,288,761	506,156,198	30,733,467	674,769,634
1981	234	505,384	642,175,354	526,188,129	33,049,067	702,110,917
1982	229	514,191	752,939,559	535,060,588	37,038,780	819,365,202
1983	223	483,537	855,252,765	621,558,363	40,633,388	928,235,601
1984	214	491,749	949,617,872	746,328,038	44,893,578	1,034,072,554
1985	209	510,050	1,084,360,551	780,982,878	51,202,226	1,181,225,941
1986	205	524,702	1,256,207,543	848,268,768	52,753,111	1,358,038,397
1987	198	535,282	1,330,241,576	923,528,832	56,201,084	1,436,698,743
1988	199	549,741	1,381,380,392	1,010,810,502	76,940,080	1,505,921,115
1989	190	540,832	1,421,885,930	1,029,932,248	65,244,217	1,544,041,452
1990	186	551,567	1,520,506,423	1,021,654,321	115,702,332	1,656,604,122
1991	184	544,291	1,627,014,646	1,024,179,636	127,646,212	1,774,067,102
1992	177	552,454	1,759,162,969	1,056,456,496	148,072,850	1,926,771,314
1993	166	560,375	1,748,332,396	1,139,489,649	183,748,052	1,948,558,994
1994	160	567,868	1,747,747,864	1,253,883,159	209,728,457	1,979,995,002
1995	157	574,861	1,809,949,174	1,336,577,665	237,589,648	2,068,128,049
1996	149	546,305	1,739,631,288	1,359,137,801	238,068,044	1,995,222,007
1997	147	555,353	1,837,730,866	1,490,175,885	260,026,511	2,119,201,878
1998	143	536,488	1,861,568,321	1,429,237,048	254,972,143	2,149,188,604
1999	138	529,935	1,868,541,790	1,496,253,240	267,469,058	2,185,716,670
2000	134	534,268	1,915,550,773	1,622,003,298	287,845,220	2,245,039,183
2001	132	541,339	2,148,371,729	1,712,423,626	305,532,866	2,506,477,070
2002	126	528,309	2,319,448,380	1,758,315,085	326,695,621	2,715,432,816
2003	121	533,339	2,429,579,075	1,910,909,088	348,503,060	2,890,014,346
2004	121	543,651	2,536,771,329	2,057,999,220	366,000,632	3,028,630,255
2005	116	544,655	2,574,476,068	2,193,497,294	379,488,095	3,105,142,435
2006	115	550,128	2,674,964,808	2,250,670,514	396,456,870	3,162,842,418
2007	110	562,849	2,834,770,423	2,360,572,357	421,284,203	3,362,890,624
2008	108	569,433	3,138,150,786	2,593,040,575	441,871,776	3,745,464,259
2009	104	594,198	3,588,224,258	2,809,294,633	457,163,530	4,297,842,074
2010	102	612,226	3,841,064,904	2,978,466,394	489,205,218	4,457,070,966
2011	101	627,564	4,145,513,597	3,142,168,732	528,066,471	4,801,919,434
2012	99	628,482	4,468,373,561	3,353,425,344	573,489,500	5,178,337,349
2013	96	642,343	4,686,402,712	3,634,447,485	588,183,875	5,409,592,373
2014	92	637,753	4,869,116,952	3,902,947,507	637,592,647	5,668,952,529
2015	88	654,498	5,189,014,881	4,317,737,229	675,224,967	6,086,979,069
2016	86	676,391	5,503,185,074	4,774,615,144	713,633,966	6,513,527,701

* Beginning 1990, Reserves includes undivided earnings.

Kansas State Statistics

Year	# of CUs	# of Memberships	Savings (\$)	Loans (\$)	Reserves (\$)*	Assets (\$)
1939	77	13,962	996,691	899,767	41,329	1,108,603
1940	101	17,238	1,309,938	1,262,910		1,464,557
1941	110	21,428	1,761,260	1,511,090		1,952,206
1942	110	22,786		1,063,918		
1943	107	30,711		879,536		
1944	91	21,837	2,351,014	892,519	128,195	2,573,372
1945	87	19,110	2,545,586	847,402	107,262	2,780,024
1946	87	20,497	2,903,482	1,356,482	122,128	3,176,291
1947	92	23,293	3,554,525	2,237,741	133,335	3,905,822
1948	94	27,051	4,272,071	2,849,129	208,094	4,694,097
1949	97	29,297	5,097,560	3,692,482	168,149	5,659,037
1950	97	33,499	6,000,596	4,741,713	198,106	6,702,533
1951	100	36,717	7,064,079	4,674,499	244,478	7,778,371
1952	107	43,543	5,718,050	5,957,829	287,407	9,488,880
1953	118	44,363	10,471,951	8,204,328	335,025	11,580,172
1954	138	52,173	12,569,231	10,000,799	405,671	13,973,762
1955	150	57,885	15,285,582	12,840,544	528,395	17,120,142
1956	160	64,064	18,561,424	15,512,858	634,316	20,885,473
1957	182	69,456	22,577,802	18,856,485	689,943	25,201,689
1958	207	76,340	27,927,694	21,811,532	906,504	31,197,608
1959	206	79,786	30,832,322	25,901,972	1,344,974	34,012,888
1960	202	86,269	35,167,014	29,028,054	1,700,112	39,024,041
1961	210	89,825	40,429,742	32,292,860	2,061,118	45,046,442
1962	223	96,581	45,088,179	37,295,650	2,450,926	50,887,808
1963	231	100,488	50,929,178	42,573,569	2,679,690	57,353,298
1964	231	109,454	57,356,939	47,429,828	3,245,285	64,506,219
1965	229	112,376	62,555,423	54,188,371	3,553,598	70,720,697
1966	230	124,427	70,402,390	64,488,564	4,354,805	80,549,277
1967	239	134,111	77,346,240	70,130,287	4,884,001	89,220,580
1968	243	139,250	86,016,877	76,543,441	5,425,493	97,355,133
1969	247	143,218	94,092,869	88,125,102	6,291,335	107,160,219
1970	217	137,628	102,826,337	87,582,364	8,266,442	116,118,427
1971	213	149,930	104,446,654	90,951,536	10,064,710	119,374,618
1972	216	171,881	129,629,340	115,797,695	13,033,688	149,410,611
1973	211	192,928	155,309,677	142,247,848	13,031,890	178,695,691
1974	211	216,229	183,080,153	171,248,904	15,953,590	220,971,932
1975	196	235,607	222,716,160	207,567,625	19,488,276	261,826,883
1976	199	258,602	278,507,125	276,972,959	20,412,207	329,183,712
1977	189	282,400	324,431,855	333,008,811	23,371,381	386,755,159
1978	191	296,688	352,645,909	349,061,035	23,595,893	415,350,052
1979	188	343,244	429,595,131	406,201,383	28,173,824	485,425,183
1980	185	385,907	492,546,761	410,042,198	25,176,467	535,480,634
1981	184	412,274	516,809,354	432,814,129	26,943,067	562,362,917
1982	178	420,243	603,731,559	445,654,588	30,742,780	653,884,202
1983	173	399,511	690,452,765	522,742,363	33,125,388	747,335,601
1984	168	412,140	778,726,441	632,616,687	36,754,422	844,871,365
1985	163	415,986	847,919,598	638,966,789	41,966,218	922,197,214
1986	160	431,946	986,764,088	695,945,462	43,333,040	1,064,152,164
1987	155	444,964	1,047,580,302	764,626,743	45,306,258	1,128,629,346
1988	157	458,688	1,089,972,811	837,363,432	62,797,269	1,186,073,751
1989	148	441,171	1,102,808,061	831,487,629	51,656,183	1,192,725,107
1990	145	442,400	1,169,770,448	821,406,920	85,006,288	1,269,352,401
1991	144	441,886	1,242,569,679	823,968,087	92,081,067	1,347,675,022
1992	137	446,921	1,348,748,129	849,550,467	107,225,364	1,469,720,728
1993	128	452,466	1,340,887,265	913,608,161	135,151,933	1,487,147,170
1994	123	459,285	1,339,013,631	1,011,786,592	157,030,737	1,511,861,436
1995	120	466,147	1,397,183,500	1,077,633,665	177,423,388	1,589,492,850
1996	117	473,837	1,471,947,350	1,181,911,193	197,428,871	1,685,269,922
1997	117	488,640	1,576,507,991	1,314,290,188	222,176,064	1,818,415,291
1998	113	468,535	1,573,362,369	1,245,473,607	214,978,296	1,818,888,231
1999	110	463,297	1,576,775,681	1,310,666,507	226,471,369	1,850,859,232
2000	107	467,150	1,627,924,001	1,427,790,508	244,241,617	1,911,297,357
2001	105	473,754	1,829,533,322	1,508,793,037	259,569,145	2,137,082,420
2002	100	471,905	2,039,718,761	1,563,417,165	287,931,908	2,385,296,776
2003	95	476,045	2,127,446,922	1,706,743,211	306,989,566	2,534,355,792
2004	95	485,248	2,222,993,128	1,843,903,990	322,105,270	2,662,150,774
2005	90	487,128	2,264,404,429	1,972,447,834	334,015,732	2,746,855,643
2006	90	495,857	2,369,482,372	2,025,831,547	349,961,329	2,806,753,992
2007	87	510,107	2,521,958,607	2,124,869,343	373,205,472	2,998,713,860
2008	85	515,792	2,799,562,853	2,342,865,964	390,919,471	3,341,224,944
2009	82	540,087	3,222,561,243	2,558,094,799	405,756,351	3,866,354,498
2010	81	559,431	3,464,917,529	2,725,570,837	434,554,474	4,023,731,668
2011	80	574,471	3,750,093,290	2,888,333,607	470,805,911	4,346,508,134
2012	79	576,431	4,050,823,127	3,081,426,331	513,300,911	4,697,952,854
2013	77	590,329	4,255,700,628	3,347,755,550	525,755,662	4,914,210,237
2014	73	527,829	4,098,710,518	3,420,026,611	539,399,557	4,794,022,471
2015	69	542,952	4,368,014,763	3,807,996,385	572,529,565	5,156,729,364
2016	67	562,515	4,650,105,164	4,226,987,487	607,666,244	5,546,035,252

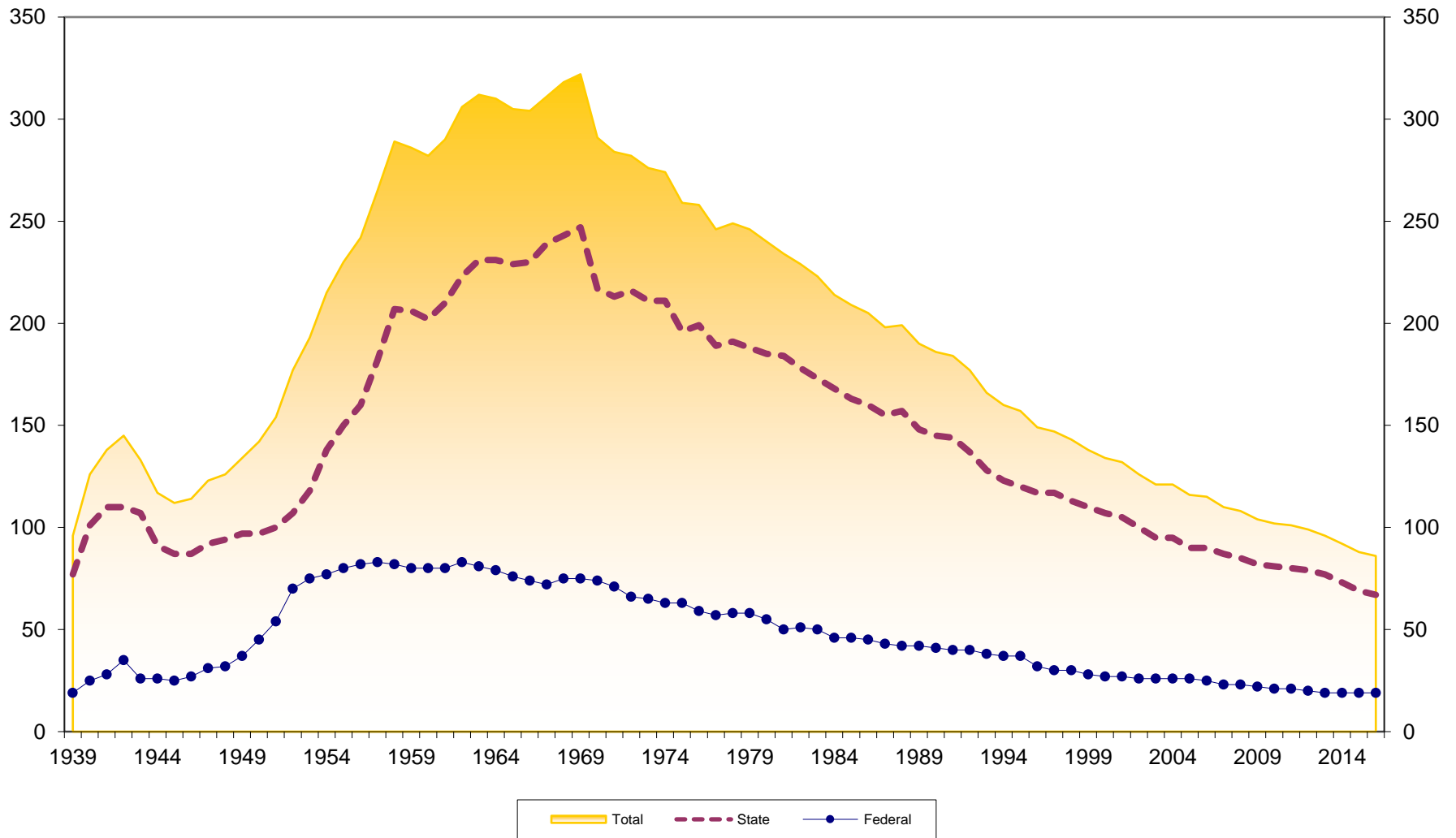
* Beginning 1990, Reserves includes undivided earnings.

Kansas Federal Statistics

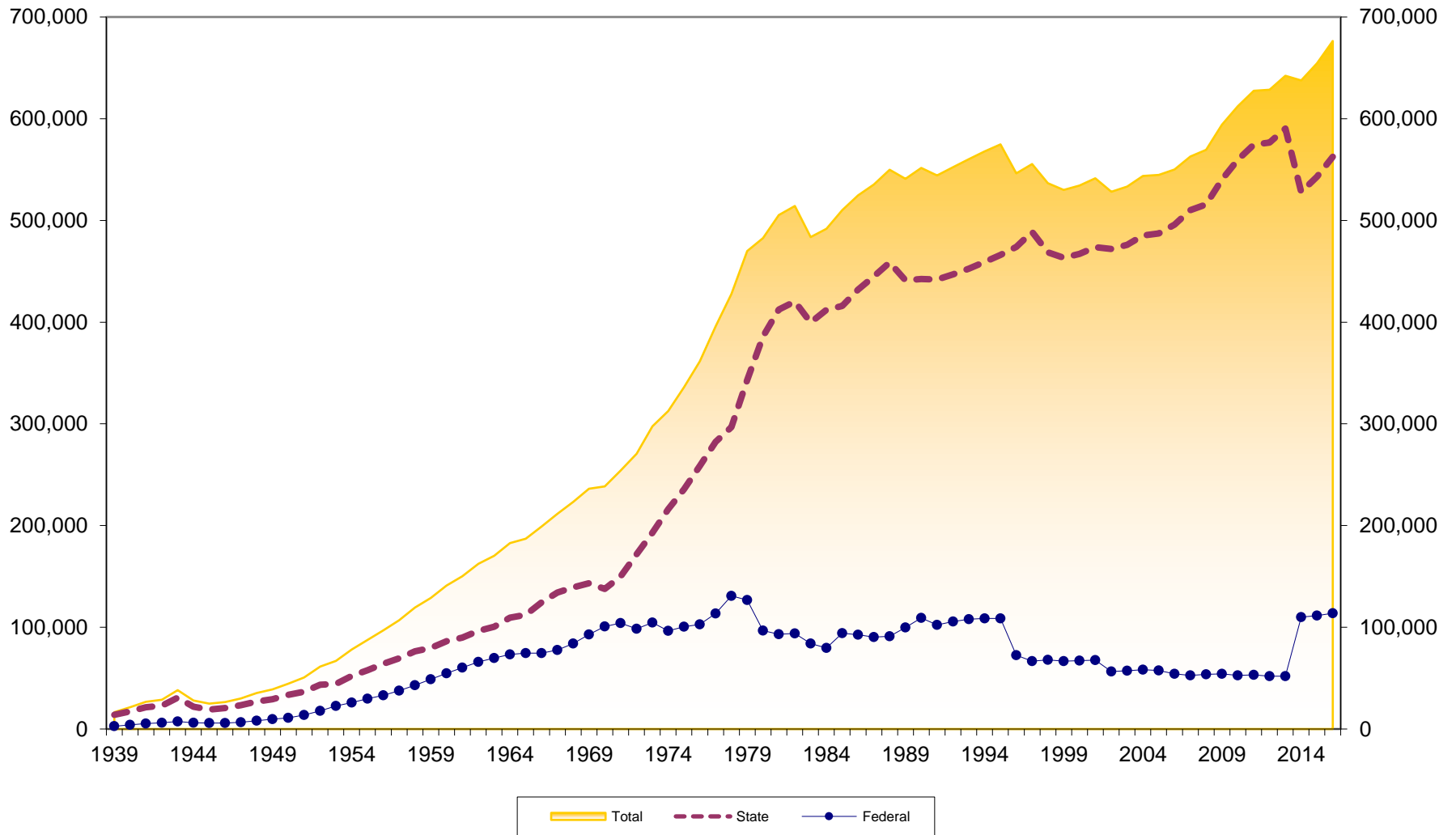
Year	# of CUs	# of Memberships	Savings (\$)	Loans (\$)	Reserves (\$)*	Assets (\$)
1939	19	2,674	125,787	116,280	3,940	139,830
1940	25	4,034	214,000	232,000		254,000
1941	28	5,321	307,423	321,000		363,000
1942	35	6,103	378,333	255,279	11,447	408,385
1943	26	7,451	431,407	213,000		463,000
1944	26	6,077	454,208	179,274	15,603	485,795
1945	25	5,958	559,051	234,675	18,135	592,514
1946	27	5,940	701,868	423,349	21,670	750,089
1947	31	6,628	1,006,598	736,095	26,206	1,076,296
1948	32	8,233	1,396,238	1,171,140	37,360	1,498,799
1949	37	9,664	1,797,835	1,630,664	49,973	1,968,329
1950	45	11,025	2,257,939	2,107,434	69,554	2,516,734
1951	54	13,840	2,950,607	2,457,574	96,241	3,261,696
1952	70	17,749	4,214,929	3,565,991	130,778	4,659,955
1953	75	22,624	5,830,505	5,272,970	177,605	6,540,700
1954	77	26,036	7,317,681	6,515,956	242,919	8,161,434
1955	80	29,655	8,736,006	8,348,498	305,336	10,011,501
1956	82	33,002	10,322,399	9,631,862	407,048	11,852,166
1957	83	37,560	11,877,050	11,698,875	511,070	14,013,845
1958	82	42,991	14,618,077	13,566,793	581,623	17,000,723
1959	80	48,970	18,747,423	17,584,664	774,485	21,362,486
1960	80	54,684	22,397,549	21,379,538	931,887	25,453,328
1961	80	60,230	27,129,897	24,727,815	1,175,812	30,464,344
1962	83	65,849	31,900,161	29,015,507	1,508,456	36,057,586
1963	81	69,796	36,584,252	33,172,168	1,797,514	41,019,377
1964	79	73,336	41,756,000	36,932,000	2,151,000	46,665,000
1965	76	74,594	45,320,000	41,716,000	2,553,000	51,543,000
1966	74	74,649	45,461,000	42,477,000	2,766,000	52,050,000
1967	72	77,539	48,636,000	45,767,000	3,246,000	55,731,000
1968	75	84,017	53,080,000	52,631,000	3,870,000	62,344,000
1969	75	92,873	57,874,000	60,102,000	4,446,000	68,546,000
1970	74	100,910	66,073,000	65,845,000	5,145,000	78,225,000
1971	71	104,017	72,408,000	69,914,000	5,203,000	85,416,000
1972	66	98,581	75,585,000	68,125,000	4,934,000	87,480,000
1973	65	104,721	82,679,000	79,325,000	5,522,000	102,076,000
1974	63	96,465	76,357,000	75,184,000	5,042,000	97,759,000
1975	63	100,500	87,563,980	89,336,000	5,489,000	111,964,000
1976	59	102,726	93,850,000	96,904,000	5,245,000	118,370,000
1977	57	113,412	113,272,000	114,864,000	5,735,000	141,136,000
1978	58	130,922	131,287,000	133,839,000	5,747,000	159,276,000
1979	58	126,663	135,303,000	122,261,000	5,314,000	153,632,000
1980	55	96,758	127,742,000	96,114,000	5,557,000	139,289,000
1981	50	93,110	125,366,000	93,374,000	6,106,000	139,748,000
1982	51	93,948	149,208,000	89,406,000	6,296,000	165,481,000
1983	50	84,026	164,800,000	98,816,000	7,508,000	180,900,000
1984	46	79,609	170,891,431	113,711,351	8,139,156	189,201,189
1985	46	94,064	236,440,953	142,016,089	9,236,008	259,028,727
1986	45	92,756	269,443,455	152,323,306	9,420,071	293,886,233
1987	43	90,318	282,661,274	158,902,089	10,894,826	308,069,397
1988	42	91,053	291,407,581	173,447,070	14,142,811	319,847,364
1989	42	99,661	319,077,869	198,444,619	13,588,034	351,316,345
1990	41	109,167	350,735,975	200,247,401	30,696,044	387,251,721
1991	40	102,405	384,444,967	200,211,549	35,565,145	426,392,080
1992	40	105,533	410,414,840	206,906,029	40,847,486	457,050,586
1993	38	107,909	407,445,131	225,881,488	48,596,119	461,411,824
1994	37	108,583	408,734,233	242,096,567	52,697,720	468,133,566
1995	37	108,714	412,765,674	258,944,000	60,166,260	478,635,199
1996	32	72,468	267,683,938	177,226,608	40,639,173	309,952,085
1997	30	66,713	261,222,875	175,885,697	37,850,447	300,786,587
1998	30	67,953	288,205,952	183,763,441	39,993,847	330,300,373
1999	28	66,638	291,766,109	185,586,733	40,997,689	334,857,438
2000	27	67,118	287,626,772	194,212,790	43,603,603	333,741,826
2001	27	67,585	318,838,407	203,630,589	45,963,721	369,394,650
2002	26	56,404	279,729,619	194,897,920	38,763,713	330,136,040
2003	26	57,294	302,132,153	204,165,877	41,513,494	355,658,554
2004	26	58,403	313,778,201	214,095,230	43,895,362	366,479,481
2005	26	57,527	310,071,639	221,049,460	45,472,363	358,286,792
2006	25	54,271	305,482,436	224,838,967	46,495,541	356,088,426
2007	23	52,742	312,811,816	235,703,014	48,078,731	364,176,764
2008	23	53,641	338,587,933	250,174,611	50,952,305	404,239,315
2009	22	54,111	365,663,015	251,199,834	51,407,179	431,487,576
2010	21	52,795	376,147,375	252,895,557	54,650,744	433,339,298
2011	21	53,093	395,420,307	253,835,125	57,260,560	455,411,300
2012	20	52,051	417,550,434	271,999,013	60,188,589	480,384,495
2013	19	52,014	430,702,084	286,691,935	62,428,213	495,382,136
2014	19	109,924	770,406,434	482,920,896	98,193,090	874,930,058
2015	19	111,546	821,000,118	509,740,844	102,695,402	930,249,705
2016	19	113,876	853,079,910	547,627,657	105,967,722	967,492,449

* Beginning 1990, Reserves includes undivided earnings.

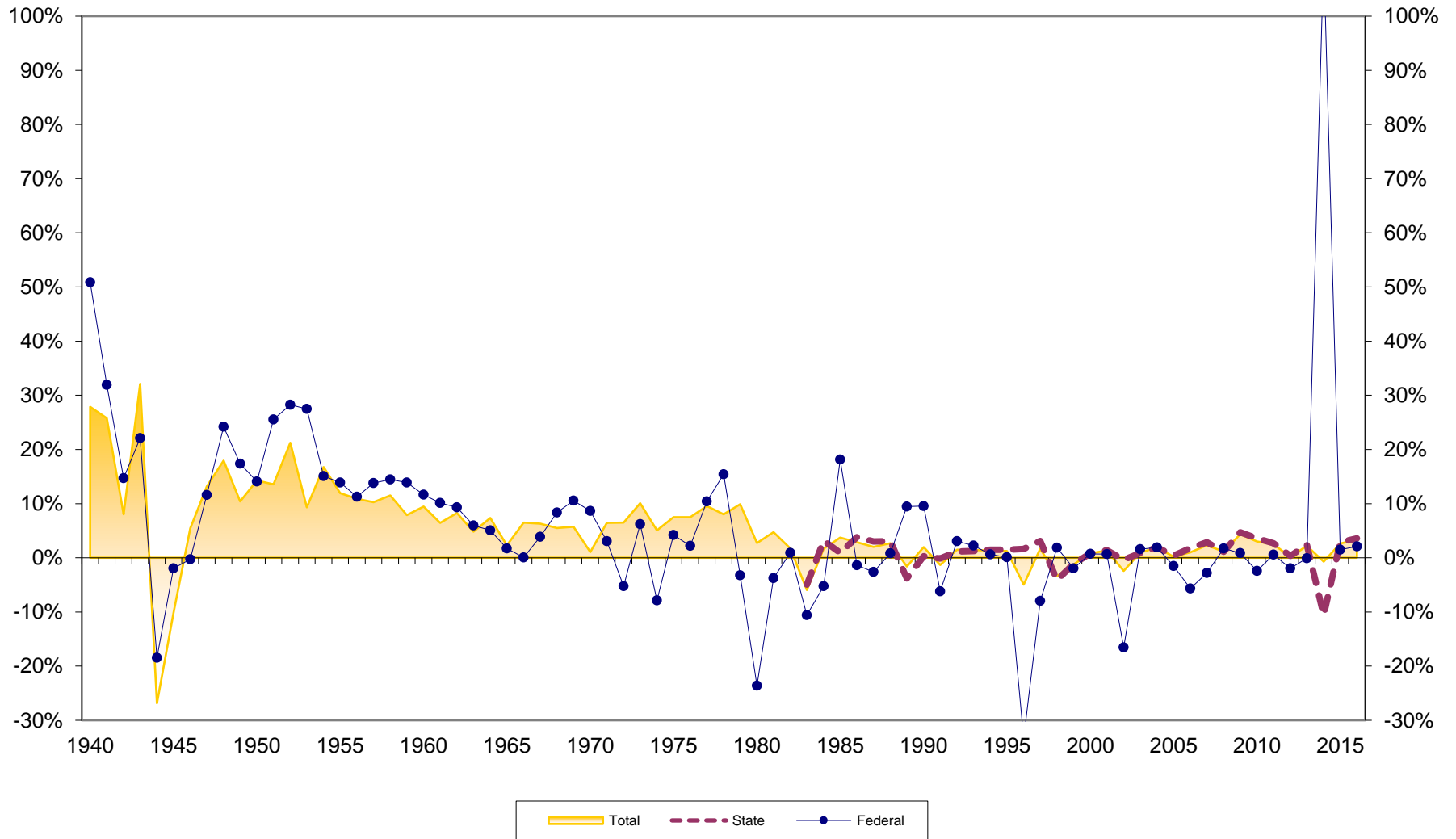
Number of Kansas Credit Unions 1939-2016



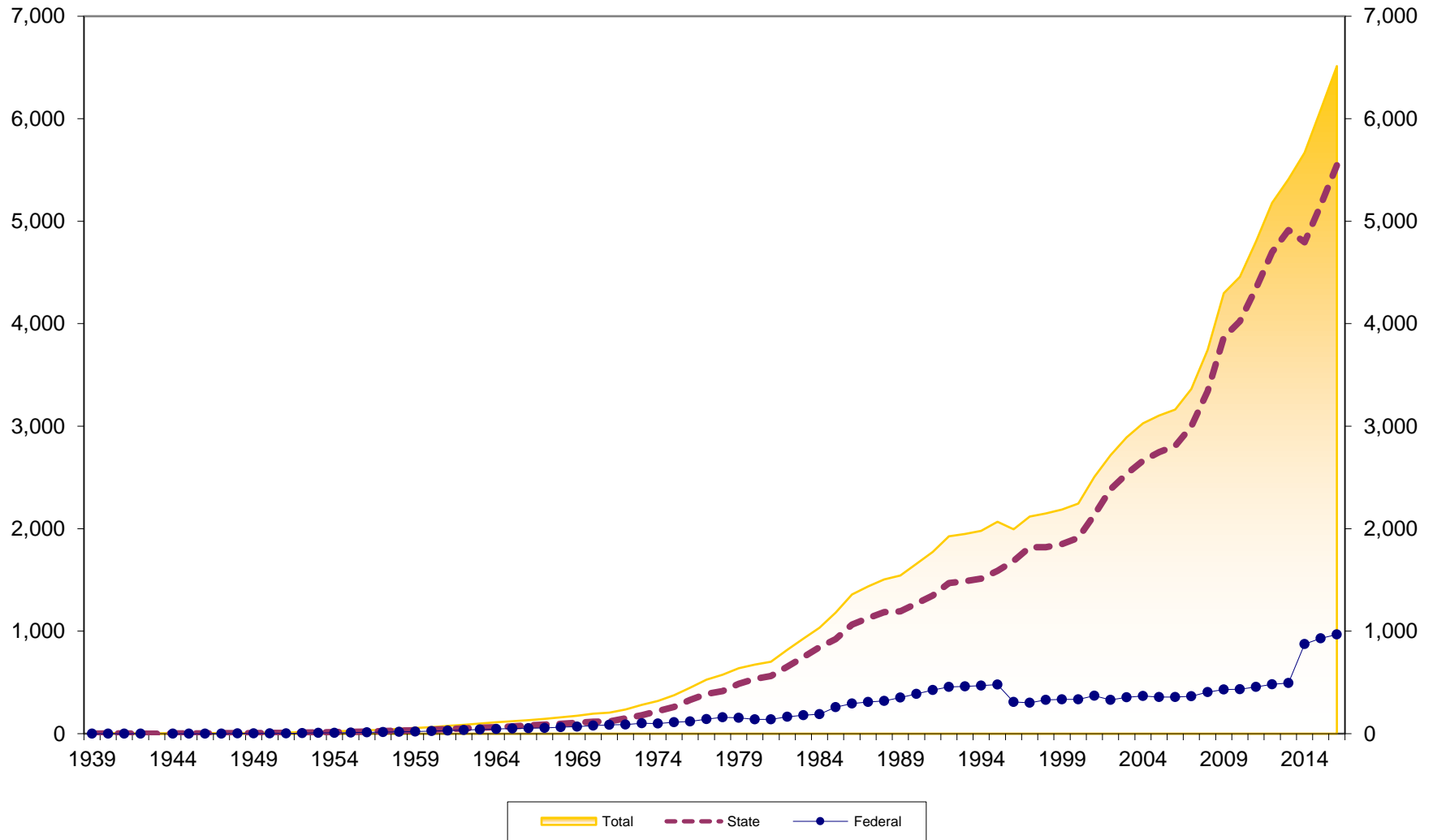
Number of Memberships at Kansas Credit Unions 1939-2016



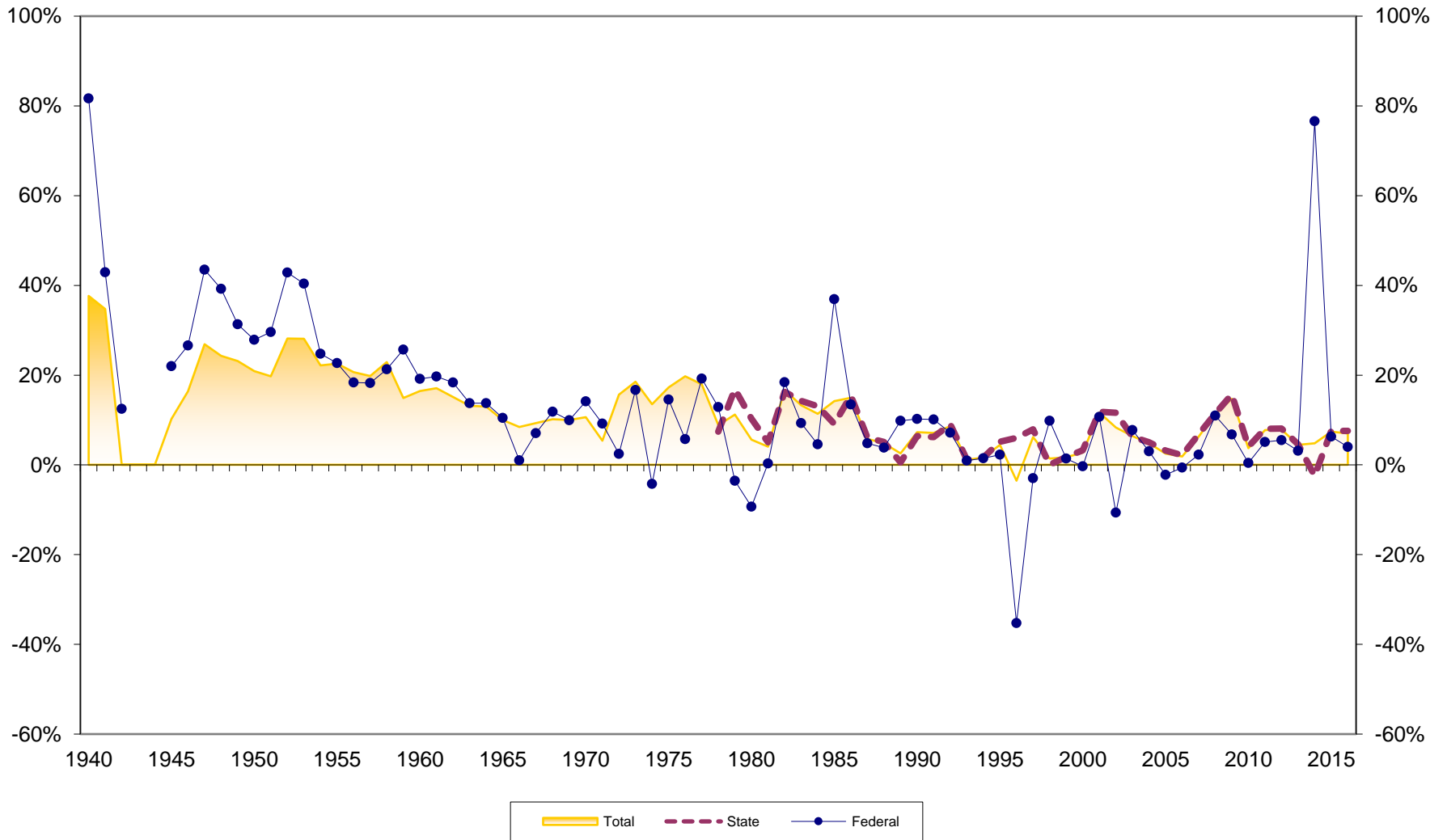
Membership Growth at Kansas Credit Unions 1940-2016



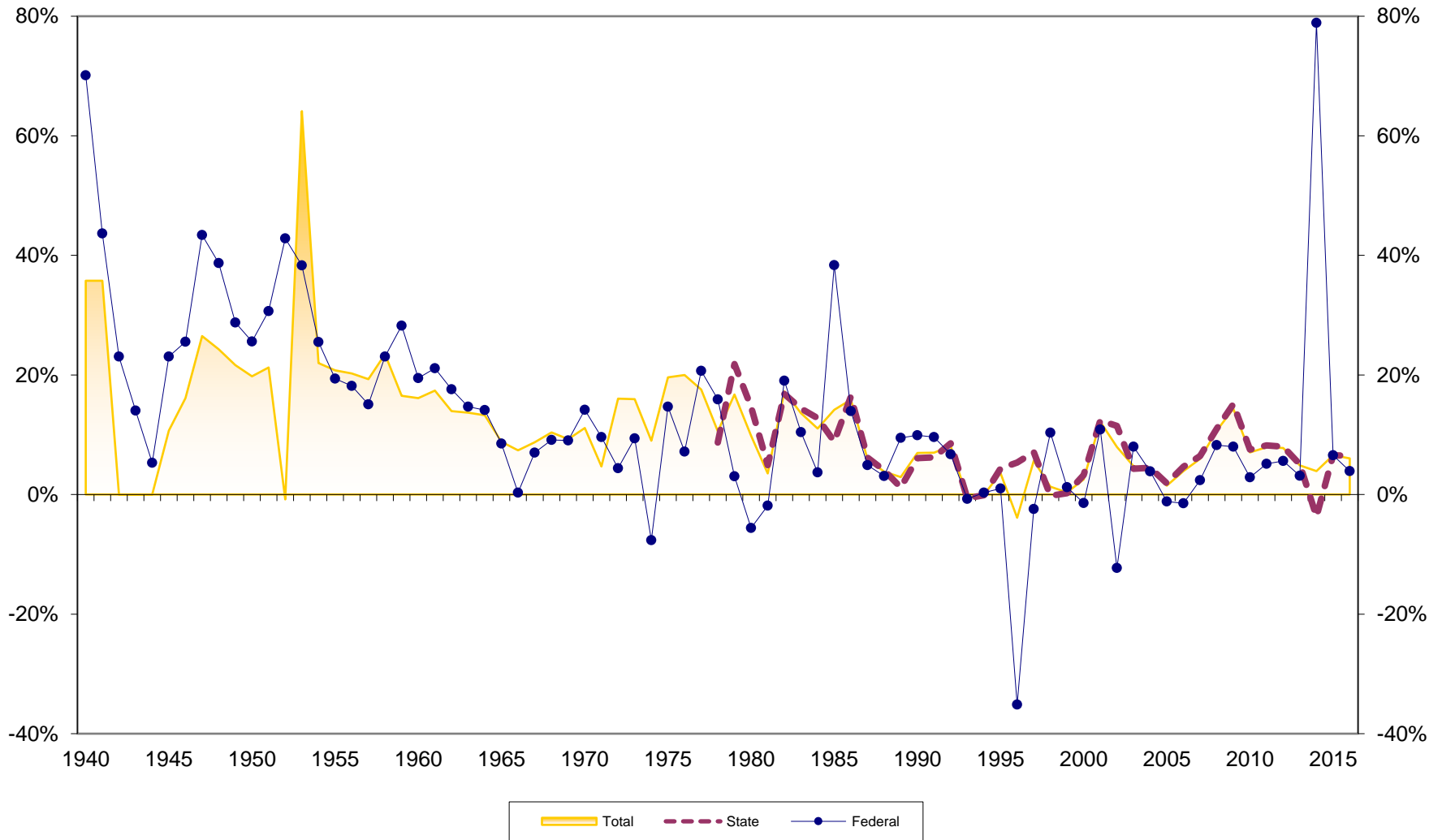
Assets at Kansas Credit Unions (in \$Millions) 1939-2016



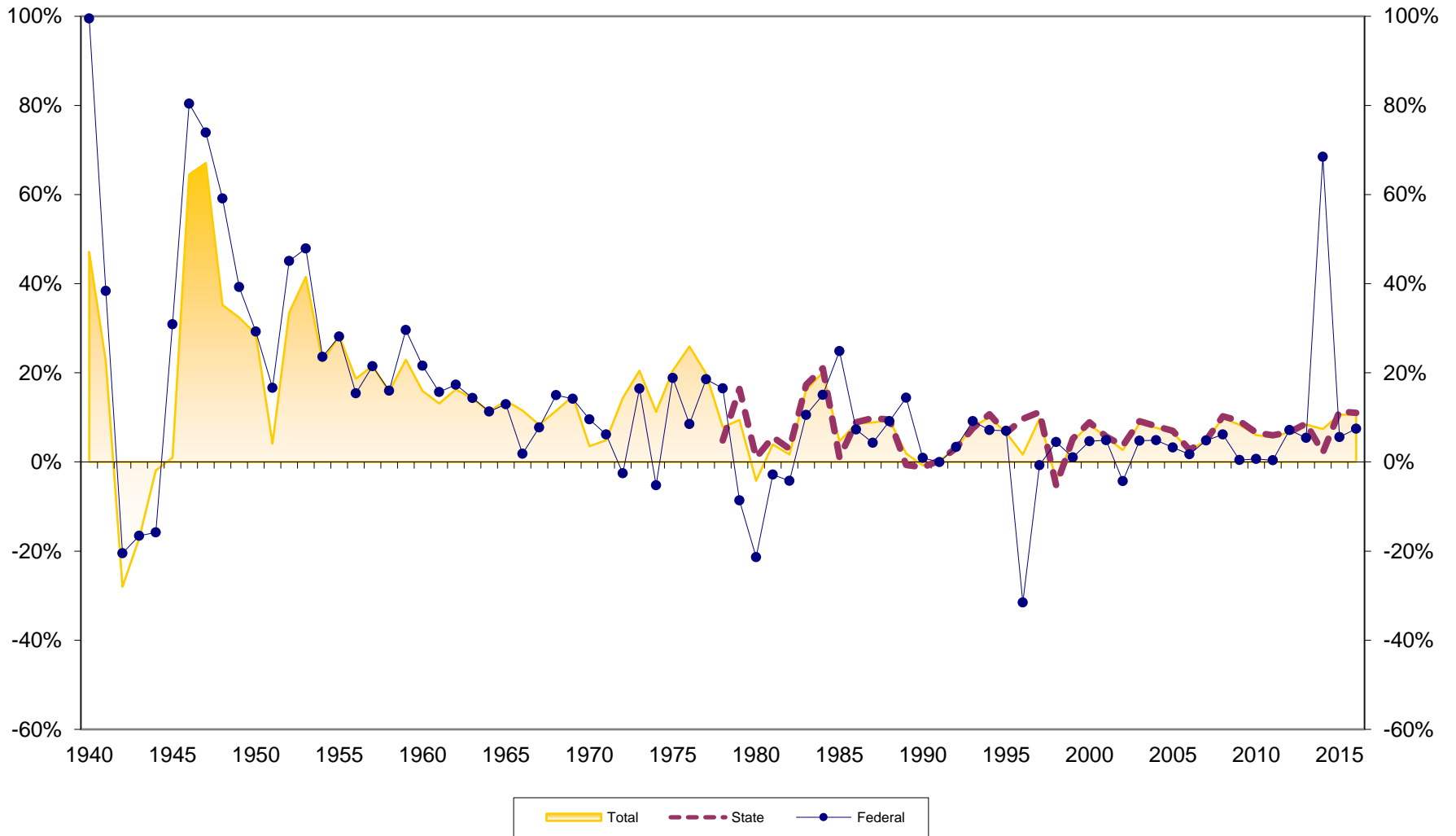
Asset Growth at Kansas Credit Unions 1940-2016



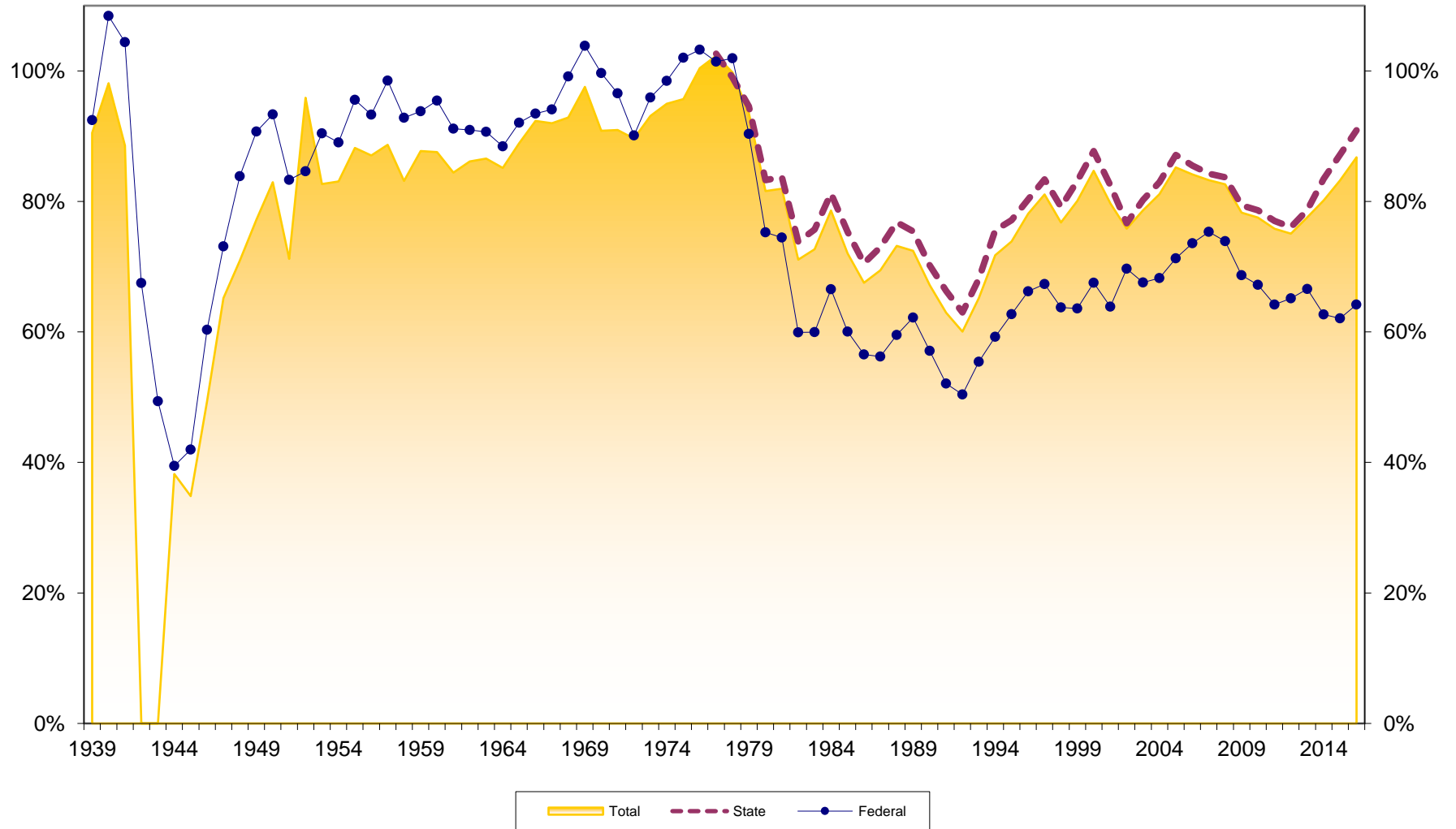
Savings Growth at Kansas Credit Unions 1940-2016



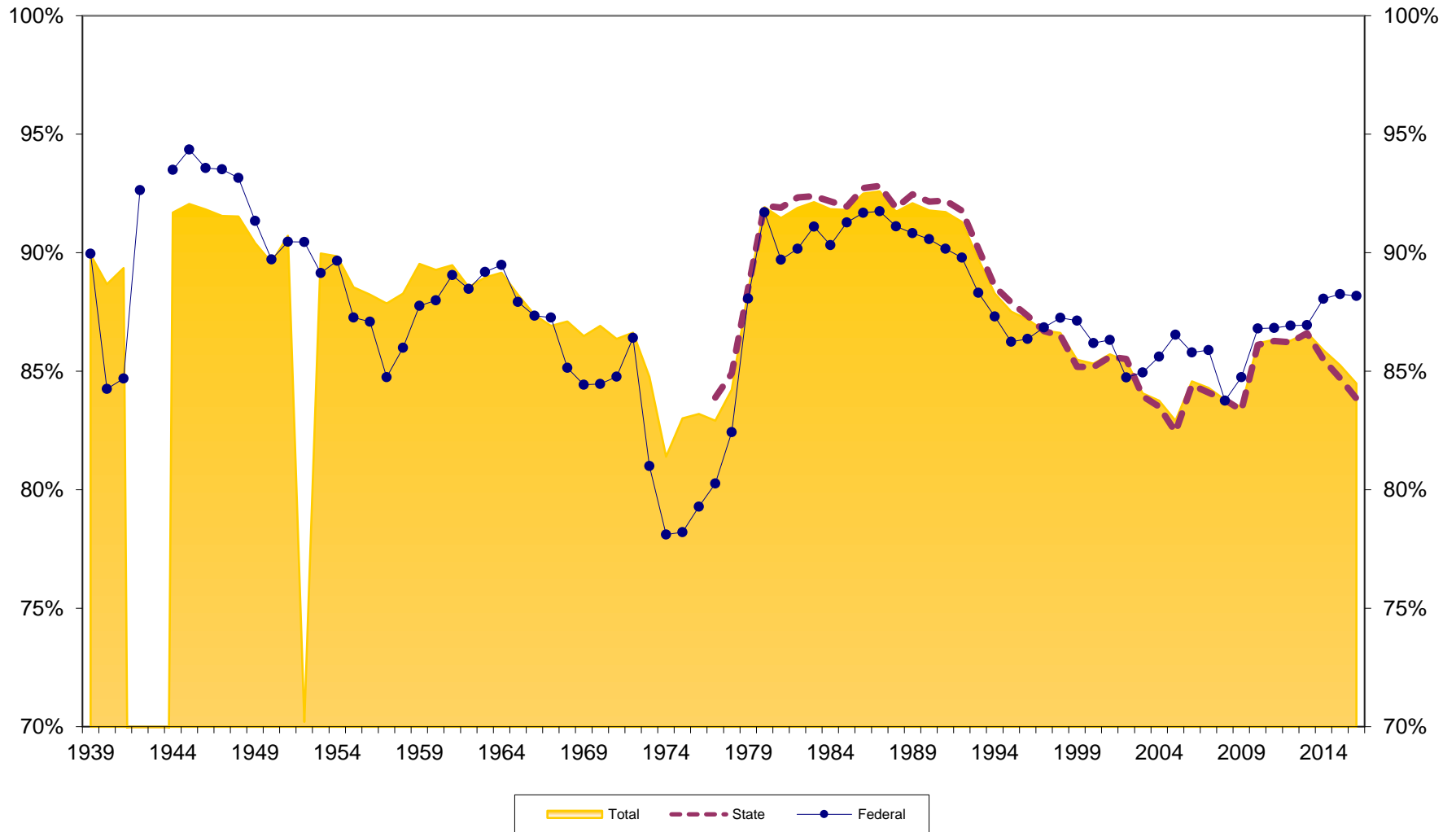
Loan Growth at Kansas Credit Unions 1940-2016



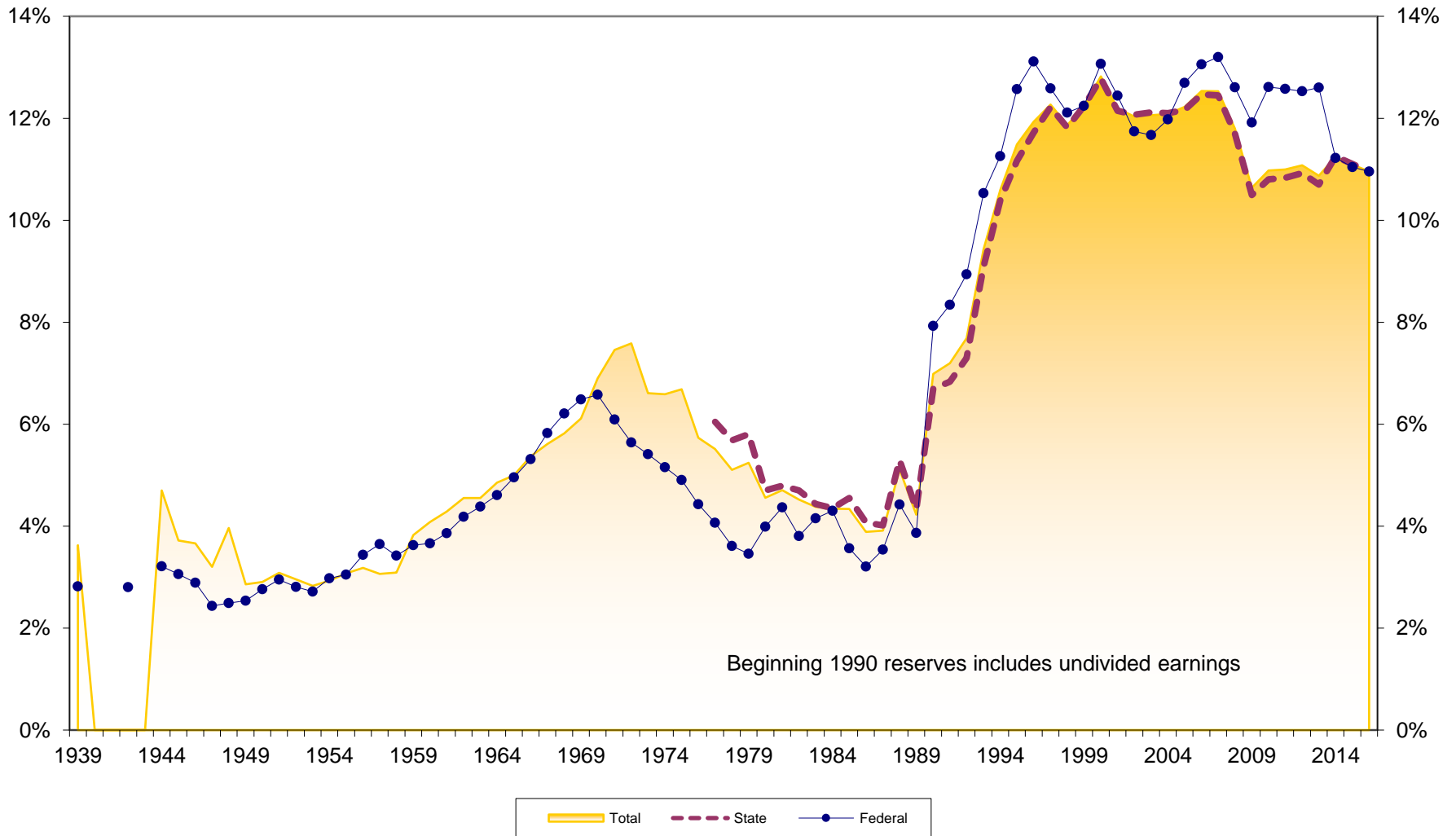
Loans to Savings Ratio at Kansas Credit Unions 1939-2016



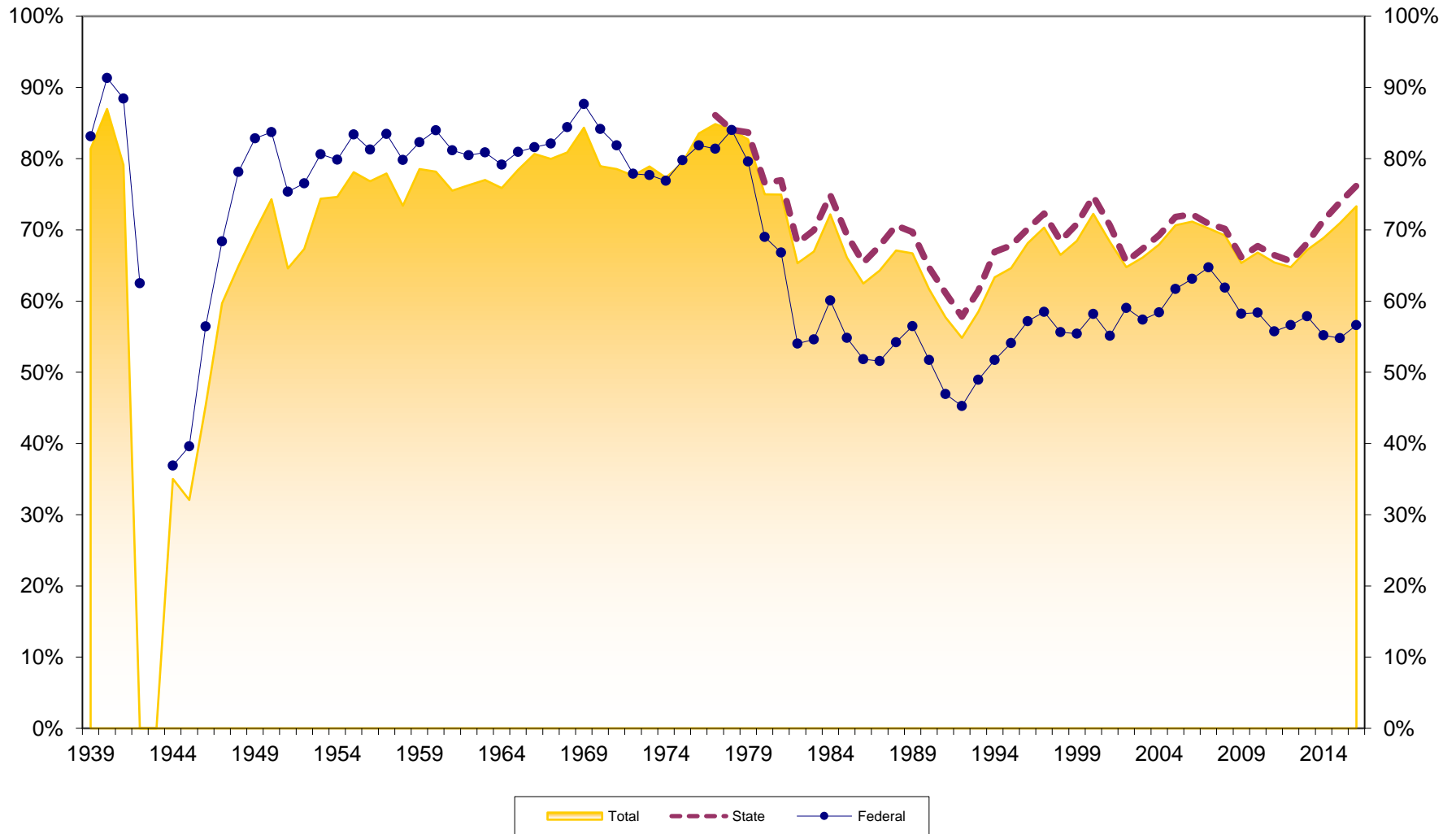
Savings to Assets at Kansas Credit Unions 1939-2016



Reserves to Assets at Kansas Credit Unions 1939-2016



Loans to Assets at Kansas Credit Unions 1939-2016



Dollar Asset Growth at Kansas Credit Unions (in \$Millions) 1940-2016

