

Montana Totals Statistics

Year	# of CUs	# of Memberships	Savings (\$)	Loans (\$)	Reserves (\$)*	Assets (\$)
1939	24	2,465	111,972	105,739	2,915	123,992
1940	31	3,815	167,518	154,427	0	185,747
1941	42	5,383	242,392	207,722	0	267,557
1942	45	5,862	208,142	155,209	8,151	226,769
1943	45	5,868	254,116	142,740	0	273,000
1944	41	6,382	460,586	201,345	23,642	495,219
1945	40	7,175	631,187	261,103	18,386	679,020
1946	41	7,504	763,832	415,432	21,978	824,170
1947	44	8,153	949,467	597,579	26,289	1,025,763
1948	39	9,090	1,155,086	836,534	68,529	1,247,931
1949	46	9,800	1,386,984	995,312	40,840	1,506,685
1950	46	9,952	1,600,914	1,344,965	67,185	1,775,053
1951	50	11,732	1,929,773	1,611,622	74,390	2,135,082
1952	56	13,763	2,506,803	2,111,613	101,127	2,776,481
1953	73	16,085	3,292,465	2,963,034	128,308	3,673,913
1954	89	19,773	4,007,468	3,601,322	160,804	4,509,557
1955	101	23,391	5,271,246	4,635,561	200,697	5,907,519
1956	133	27,401	6,704,380	6,122,228	285,645	7,610,187
1957	142	32,447	8,195,045	7,540,684	354,002	9,391,470
1958	142	36,369	10,202,346	8,935,422	451,382	11,698,783
1959	147	40,468	11,975,180	11,372,016	585,946	14,260,916
1960	142	44,629	14,350,539	13,552,221	692,142	16,550,106
1961	139	48,112	16,293,204	15,595,076	830,874	19,294,497
1962	138	51,085	18,442,088	17,411,648	1,068,752	22,007,362
1963	140	54,953	20,965,800	19,551,773	1,436,168	25,149,006
1964	136	57,491	24,185,688	22,375,189	1,478,567	28,180,059
1965	137	60,595	27,349,128	24,953,329	1,677,306	31,214,859
1966	132	63,901	29,685,000	27,384,000	1,896,575	33,952,000
1967	133	63,794	31,201,561	28,446,881	2,260,000	35,918,158
1968	137	69,798	34,697,855	32,760,965	2,782,626	40,820,935
1969	141	74,134	38,553,384	37,610,038	3,223,231	45,545,052
1970	146	79,719	43,643,567	42,176,565	3,594,868	51,038,059
1971	144	86,818	52,234,354	50,628,033	4,114,311	60,666,715
1972	140	93,731	63,879,425	58,706,812	4,736,551	73,347,601
1973	139	101,440	74,205,623	69,714,432	5,419,331	85,560,110
1974	138	108,467	88,659,266	80,293,626	6,050,935	101,108,747
1975	136	120,822	114,248,946	103,060,641	6,750,122	129,712,401
1976	137	136,567	145,939,946	148,045,606	8,105,935	174,340,019
1977	133	159,877	201,011,671	183,795,848	10,368,995	244,089,136
1978	133	183,082	241,242,171	236,955,124	11,739,807	300,090,849
1979	136	173,097	249,315,661	238,070,571	12,268,214	305,941,378
1980	131	192,096	267,682,650	220,456,581	12,919,414	310,162,976
1981	126	196,533	289,976,954	230,502,642	12,539,730	326,716,564
1982	119	203,135	335,837,652	229,600,782	14,551,569	377,444,718
1983	116	219,111	389,752,121	282,258,034	15,599,960	429,740,714
1984	113	232,798	441,238,972	335,358,772	18,404,306	482,088,959
1985	112	245,896	528,438,326	370,943,071	21,153,906	579,203,717
1986	110	259,839	631,645,823	384,256,393	20,740,029	668,191,349
1987	109	267,679	650,371,033	403,736,561	21,374,781	690,340,321
1988	108	269,905	657,642,797	424,126,174	32,963,361	705,216,001
1989	103	268,936	643,363,605	436,973,651	28,885,089	695,271,082
1990	99	264,840	693,772,932	455,964,743	50,628,930	750,586,113
1991	97	274,150	772,984,512	479,678,586	57,930,594	836,667,118
1992	93	279,973	867,197,825	546,224,058	69,978,630	946,831,670
1993	91	292,487	928,984,440	615,746,634	84,752,044	1,021,205,191
1994	89	300,360	960,450,909	724,248,989	98,822,545	1,076,742,698
1995	88	306,043	1,003,286,888	794,121,634	112,342,610	1,125,981,109
1996	86	315,823	1,076,493,254	870,117,169	126,152,401	1,210,322,553
1997	85	316,712	1,147,162,552	942,764,825	141,776,007	1,296,070,491
1998	82	321,688	1,275,343,832	992,702,951	156,321,543	1,440,119,073
1999	79	329,514	1,337,864,312	1,086,606,794	167,508,080	1,536,013,143
2000	76	335,774	1,401,309,563	1,203,040,579	183,162,010	1,614,080,789
2001	74	343,391	1,620,183,442	1,283,864,663	200,940,284	1,840,379,436
2002	73	349,716	1,807,077,716	1,352,188,445	221,272,945	2,048,375,056
2003	71	355,517	2,026,391,178	1,486,089,044	244,620,975	2,300,352,071
2004	69	364,350	2,138,466,898	1,622,316,717	268,570,298	2,456,791,588
2005	66	366,179	2,243,132,520	1,805,487,844	289,274,616	2,581,459,712
2006	65	370,074	2,392,067,504	2,019,948,335	314,260,868	2,771,241,114
2007	63	374,544	2,591,237,040	2,158,053,709	342,857,536	2,992,163,653
2008	60	381,693	2,883,544,661	2,371,460,784	366,190,827	3,335,899,829
2009	58	386,814	3,252,533,766	2,527,787,182	386,207,570	3,752,127,996
2010	57	387,613	3,436,407,731	2,458,454,705	405,724,607	3,895,950,020
2011	57	392,018	3,568,174,965	2,391,884,132	424,945,794	4,049,186,610
2012	56	386,752	3,690,700,762	2,306,145,503	443,806,405	4,189,055,264
2013	56	387,414	3,770,021,409	2,316,868,407	459,965,712	4,282,081,929
2014	55	381,690	3,912,656,122	2,359,624,165	503,658,649	4,464,572,289
2015	52	380,603	4,005,767,206	2,487,138,504	519,900,081	4,571,269,004
2016	51	385,459	4,183,586,359	2,702,567,329	547,253,757	4,779,368,776

* Beginning 1990, Reserves includes undivided earnings.

Montana State Statistics

Year	# of CUs	# of Memberships	Savings (\$)	Loans (\$)	Reserves (\$)*	Assets (\$)
1939	8	650	37,958	35,298	727	42,308
1940	12	997	46,518	41,427		49,747
1941	12	1,059	59,465	52,722		66,557
1942	10	1,002		45,286		
1943	15	1,000		34,740		
1944	9	822	96,175	64,078	12,616	107,422
1945	7	722	116,461	78,107	4,394	132,997
1946	7	935	147,774	146,675	4,661	175,004
1947	8	950	148,500	141,839	6,273	177,117
1948	2	1,058	180,190	165,130	40,913	205,596
1949	3	962	191,430	181,724	3,250	215,695
1950	3	650	212,075	197,716	14,373	229,061
1951	5	1,032	272,600	252,200	9,100	307,600
1952	5	1,217	307,121	260,000	14,539	344,752
1953	8	1,257	411,585	401,382	19,884	473,173
1954	11	2,505	510,583	489,390	20,723	597,666
1955	15	3,035	678,725	610,581	29,178	756,622
1956	15	3,559	723,524	775,282	40,989	897,656
1957	25	4,575	911,559	957,500	48,875	1,129,322
1958	28	5,207	1,226,466	1,273,187	61,349	1,505,199
1959	35	6,576	1,398,068	1,751,494	83,702	2,047,322
1960	34	7,580	1,865,585	2,024,334	94,967	2,365,967
1961	33	9,161	2,429,030	2,674,414	114,576	3,085,226
1962	33	9,825	2,914,067	3,212,794	149,089	3,712,310
1963	29	10,638	3,336,000	3,849,000	348,000	4,411,000
1964	28	11,197	4,152,688	4,401,189	212,567	5,233,059
1965	26	11,523	4,532,128	4,656,329	257,306	5,374,859
1966	27	12,231	5,086,000	4,994,000	294,575	5,951,000
1967	26	9,544	5,013,561	4,341,881	343,000	5,806,158
1968	24	10,412	5,672,855	4,903,965	332,626	6,744,935
1969	22	10,661	6,410,384	5,618,038	406,231	7,620,052
1970	24	10,538	6,569,567	5,843,565	361,868	7,732,059
1971	24	13,139	9,222,354	8,536,033	558,311	10,593,715
1972	23	14,588	12,363,425	10,841,812	723,551	13,951,601
1973	23	16,419	13,579,623	13,058,432	898,331	16,076,110
1974	24	18,226	18,579,266	16,380,626	1,126,935	21,175,747
1975	24	23,846	29,066,946	27,072,641	1,403,122	32,302,401
1976	25	26,399	49,401,946	45,111,606	2,142,935	54,307,019
1977	25	33,950	80,643,671	65,480,848	3,422,995	98,644,136
1978	25	43,109	100,353,171	96,853,124	4,725,807	128,315,849
1979	25	43,693	104,040,661	100,890,571	4,864,214	137,763,378
1980	25	56,274	108,302,650	96,145,581	5,036,414	134,641,976
1981	25	52,558	116,424,954	96,467,642	3,860,730	135,835,564
1982	24	59,843	131,063,652	97,225,782	4,357,569	153,823,718
1983	23	65,003	147,152,121	124,258,034	4,935,960	167,940,714
1984	23	72,493	168,054,685	143,290,329	5,561,340	187,389,334
1985	22	56,731	141,481,594	103,443,141	6,672,155	156,530,151
1986	22	59,279	163,954,629	96,976,026	4,332,827	173,880,424
1987	21	56,255	154,273,328	88,250,203	4,204,533	165,281,110
1988	21	54,631	153,963,123	90,375,595	9,062,879	166,351,326
1989	19	56,434	146,471,674	97,870,873	5,877,941	161,210,858
1990	18	58,380	162,293,404	100,545,027	15,084,247	178,741,736
1991	16	59,194	192,503,367	105,577,351	17,131,797	210,946,651
1992	15	60,082	219,461,318	121,566,727	20,670,832	241,430,090
1993	15	62,945	242,542,563	145,469,842	24,817,043	268,696,759
1994	13	64,319	254,546,259	175,648,348	29,111,138	286,501,037
1995	13	66,148	275,327,479	206,023,164	32,848,590	309,879,246
1996	13	76,135	325,277,052	243,120,358	37,824,385	364,324,323
1997	13	76,685	362,626,129	282,797,361	43,151,599	407,580,550
1998	13	80,552	419,197,658	301,424,388	49,477,627	470,152,026
1999	13	84,242	450,562,534	334,474,972	54,262,208	506,331,542
2000	13	87,962	482,165,834	381,101,500	60,150,637	544,771,887
2001	14	104,057	636,862,932	473,152,839	76,853,089	716,644,324
2002	14	109,876	725,242,186	508,134,450	88,346,944	816,307,104
2003	13	110,188	835,920,518	576,217,029	99,915,515	938,439,784
2004	12	117,013	923,667,358	674,144,590	113,074,290	1,053,459,916
2005	11	119,329	1,000,258,042	822,884,822	122,872,942	1,147,107,946
2006	11	120,172	1,085,100,705	957,117,448	132,932,304	1,253,948,208
2007	10	118,019	1,194,945,039	1,025,612,569	144,783,747	1,364,366,597
2008	10	122,602	1,367,545,392	1,154,143,693	158,492,008	1,552,573,950
2009	8	117,310	1,474,866,764	1,204,941,029	167,612,850	1,657,793,904
2010	8	118,339	1,538,947,194	1,161,900,015	174,752,542	1,728,104,701
2011	8	119,216	1,571,319,751	1,099,701,321	183,252,867	1,768,988,714
2012	7	110,892	1,557,834,562	991,550,579	183,471,136	1,755,785,711
2013	7	110,268	1,585,997,161	961,776,336	192,082,818	1,792,081,205
2014	8	132,019	1,786,922,560	1,104,558,672	238,227,163	2,043,464,036
2015	8	138,228	1,888,190,416	1,188,040,517	254,091,320	2,160,724,488
2016	9	148,512	2,012,243,689	1,342,998,440	273,310,985	2,303,948,102

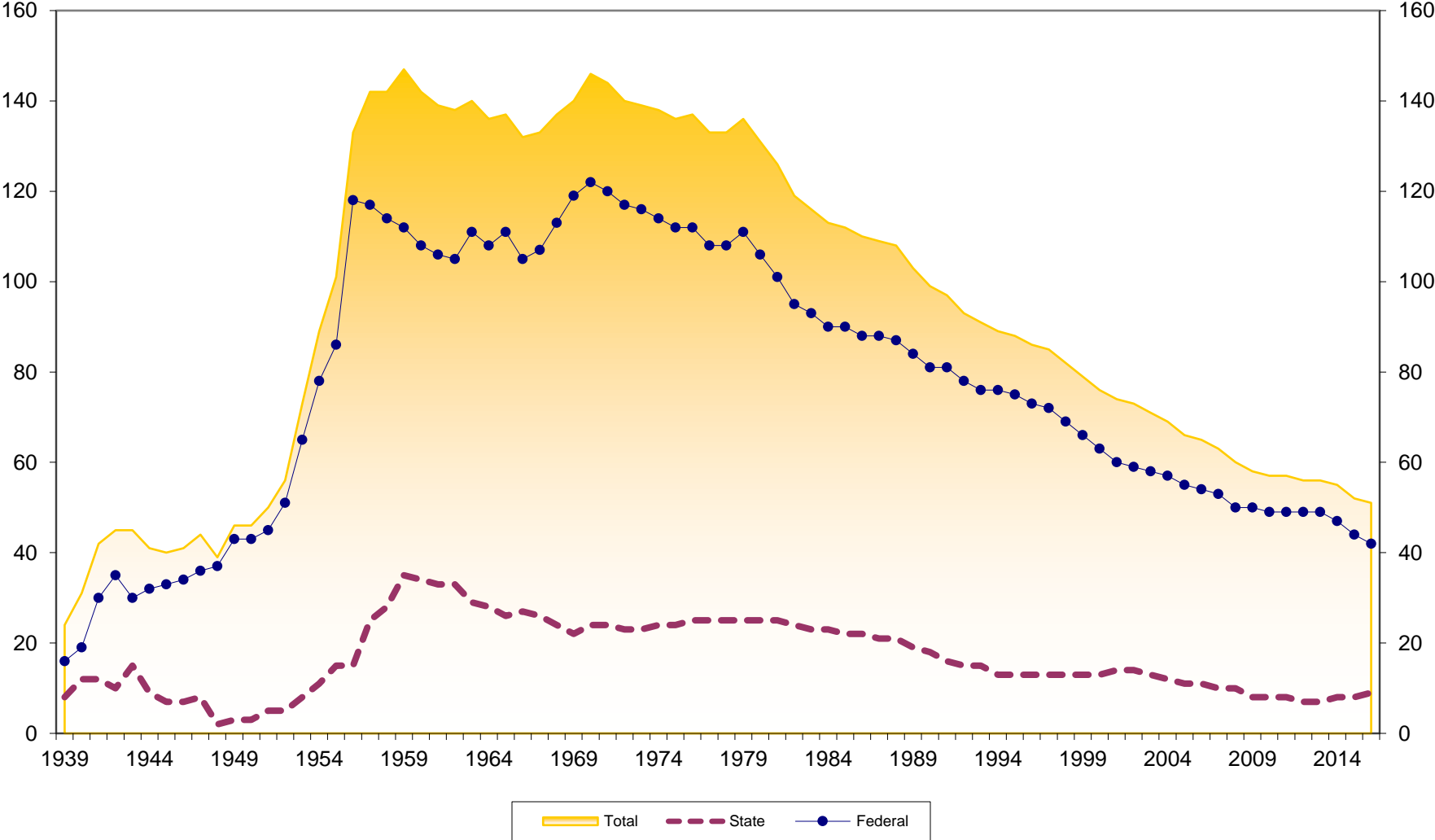
* Beginning 1990, Reserves includes undivided earnings.

Montana Federal Statistics

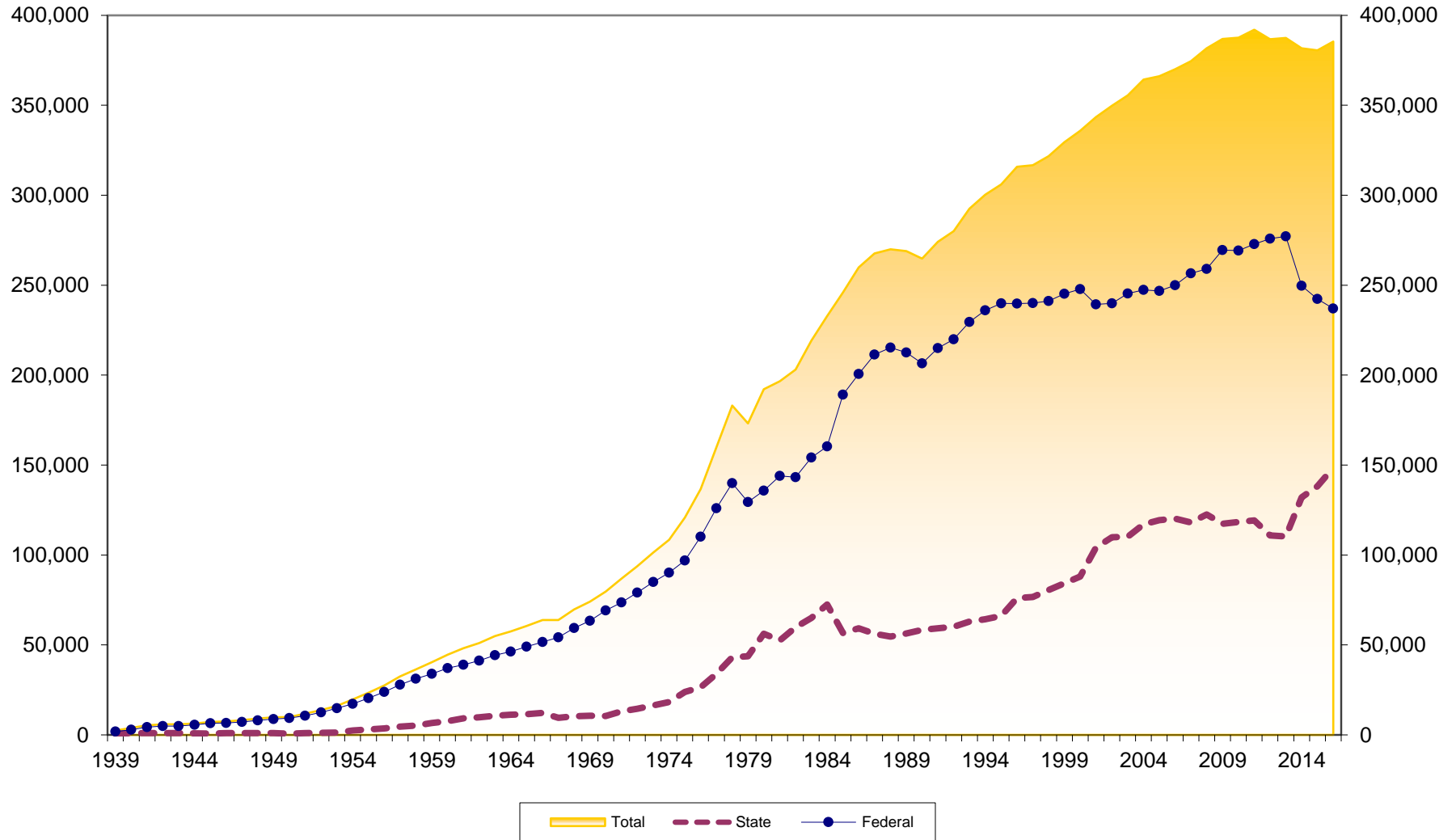
Year	# of CUs	# of Memberships	Savings (\$)	Loans (\$)	Reserves (\$)*	Assets (\$)
1939	16	1,815	74,014	70,441	2,188	81,684
1940	19	2,818	121,000	113,000		136,000
1941	30	4,324	182,927	155,000		201,000
1942	35	4,860	208,142	109,923	8,151	226,769
1943	30	4,868	254,116	108,000		273,000
1944	32	5,560	364,411	137,267	11,026	387,797
1945	33	6,453	514,726	182,996	13,992	546,023
1946	34	6,569	616,058	268,757	17,317	649,166
1947	36	7,203	800,967	455,740	20,016	848,646
1948	37	8,032	974,896	671,404	27,616	1,042,335
1949	43	8,838	1,195,554	813,588	37,590	1,290,990
1950	43	9,302	1,388,839	1,147,249	52,812	1,545,992
1951	45	10,700	1,657,173	1,359,422	65,290	1,827,482
1952	51	12,546	2,199,682	1,851,613	86,588	2,431,729
1953	65	14,828	2,880,880	2,561,652	108,424	3,200,740
1954	78	17,268	3,496,885	3,111,932	140,081	3,911,891
1955	86	20,356	4,592,521	4,024,980	171,519	5,150,897
1956	118	23,842	5,980,856	5,346,946	244,656	6,712,531
1957	117	27,872	7,283,486	6,583,184	305,127	8,262,148
1958	114	31,162	8,975,880	7,662,235	390,033	10,193,584
1959	112	33,892	10,577,112	9,620,522	502,244	12,213,594
1960	108	37,049	12,484,954	11,527,887	597,175	14,184,139
1961	106	38,951	13,864,174	12,920,662	716,298	16,209,271
1962	105	41,260	15,528,021	14,198,854	919,663	18,295,052
1963	111	44,315	17,629,800	15,702,773	1,088,168	20,738,006
1964	108	46,294	20,033,000	17,974,000	1,266,000	22,947,000
1965	111	49,072	22,817,000	20,297,000	1,420,000	25,840,000
1966	105	51,670	24,599,000	22,390,000	1,602,000	28,001,000
1967	107	54,250	26,188,000	24,105,000	1,917,000	30,112,000
1968	113	59,386	29,025,000	27,857,000	2,450,000	34,076,000
1969	119	63,473	32,143,000	31,992,000	2,817,000	37,925,000
1970	122	69,181	37,074,000	36,333,000	3,233,000	43,306,000
1971	120	73,679	43,012,000	42,092,000	3,556,000	50,073,000
1972	117	79,143	51,516,000	47,865,000	4,013,000	59,396,000
1973	116	85,021	60,626,000	56,656,000	4,521,000	69,484,000
1974	114	90,241	70,080,000	63,913,000	4,924,000	79,933,000
1975	112	96,976	85,182,000	75,988,000	5,347,000	97,410,000
1976	112	110,168	96,538,000	102,934,000	5,963,000	120,033,000
1977	108	125,927	120,368,000	118,315,000	6,946,000	145,445,000
1978	108	139,973	140,889,000	140,102,000	7,014,000	171,775,000
1979	111	129,404	145,275,000	137,180,000	7,404,000	168,178,000
1980	106	135,822	159,380,000	124,311,000	7,883,000	175,521,000
1981	101	143,975	173,552,000	134,035,000	8,679,000	190,881,000
1982	95	143,292	204,774,000	132,375,000	10,194,000	223,621,000
1983	93	154,108	242,600,000	158,000,000	10,664,000	261,800,000
1984	90	160,305	273,184,287	192,068,443	12,842,966	294,699,625
1985	90	189,165	386,956,732	267,499,930	14,481,751	422,673,566
1986	88	200,560	467,691,194	287,280,367	16,407,202	494,310,925
1987	88	211,424	496,097,705	315,486,358	17,170,248	525,059,211
1988	87	215,274	503,679,674	333,750,579	23,900,482	538,864,675
1989	84	212,502	496,891,931	339,102,778	23,007,148	534,060,224
1990	81	206,460	531,479,528	355,419,716	35,544,683	571,844,377
1991	81	214,956	580,481,145	374,101,235	40,798,797	625,720,467
1992	78	219,891	647,736,507	424,657,331	49,307,798	705,401,580
1993	76	229,542	686,441,877	470,276,792	59,935,001	752,508,432
1994	76	236,041	705,904,650	548,600,641	69,711,407	790,241,661
1995	75	239,895	727,959,409	588,098,470	79,494,020	816,101,863
1996	73	239,688	751,216,202	626,996,811	88,328,016	845,998,230
1997	72	240,027	784,536,423	659,967,464	98,624,408	888,489,941
1998	69	241,136	856,146,174	691,278,563	106,843,916	969,967,047
1999	66	245,272	887,301,778	752,131,822	113,245,872	1,029,681,601
2000	63	247,812	919,143,729	821,939,079	123,011,373	1,069,308,902
2001	60	239,334	983,320,510	810,711,824	124,087,195	1,123,735,112
2002	59	239,840	1,081,835,530	844,053,995	132,926,001	1,232,067,952
2003	58	245,329	1,190,470,660	909,872,015	144,705,460	1,361,912,287
2004	57	247,337	1,214,799,540	948,172,127	155,496,008	1,403,331,672
2005	55	246,850	1,242,874,478	982,603,022	166,401,674	1,434,351,766
2006	54	249,902	1,306,966,799	1,062,830,887	181,328,564	1,517,292,906
2007	53	256,525	1,396,292,001	1,132,441,140	198,073,789	1,627,797,056
2008	50	259,091	1,515,999,269	1,217,317,091	207,698,819	1,783,325,879
2009	50	269,504	1,777,667,002	1,322,846,153	218,594,720	2,094,334,092
2010	49	269,274	1,897,460,537	1,296,554,690	230,972,065	2,167,845,319
2011	49	272,802	1,996,855,214	1,292,182,811	241,692,927	2,280,197,896
2012	49	275,860	2,132,866,200	1,314,594,924	260,335,269	2,433,269,553
2013	49	277,146	2,184,024,248	1,355,092,071	267,882,894	2,490,000,724
2014	47	249,671	2,125,733,562	1,255,065,493	265,431,486	2,421,108,253
2015	44	242,375	2,117,576,790	1,299,097,987	265,808,761	2,410,544,516
2016	42	236,947	2,171,342,670	1,359,568,889	273,942,772	2,475,420,674

* Beginning 1990, Reserves includes undivided earnings.

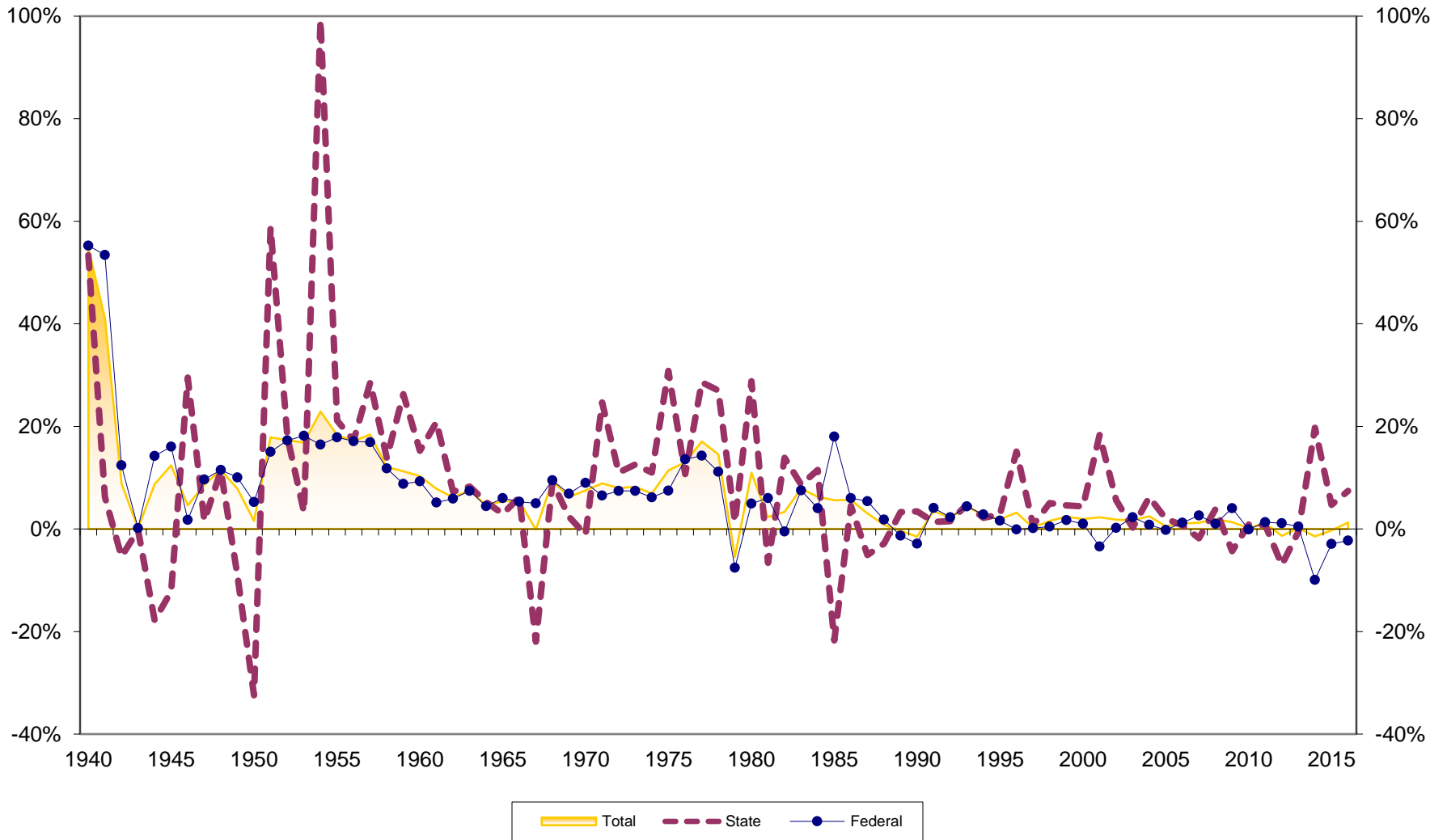
Number of Montana Credit Unions 1939-2016



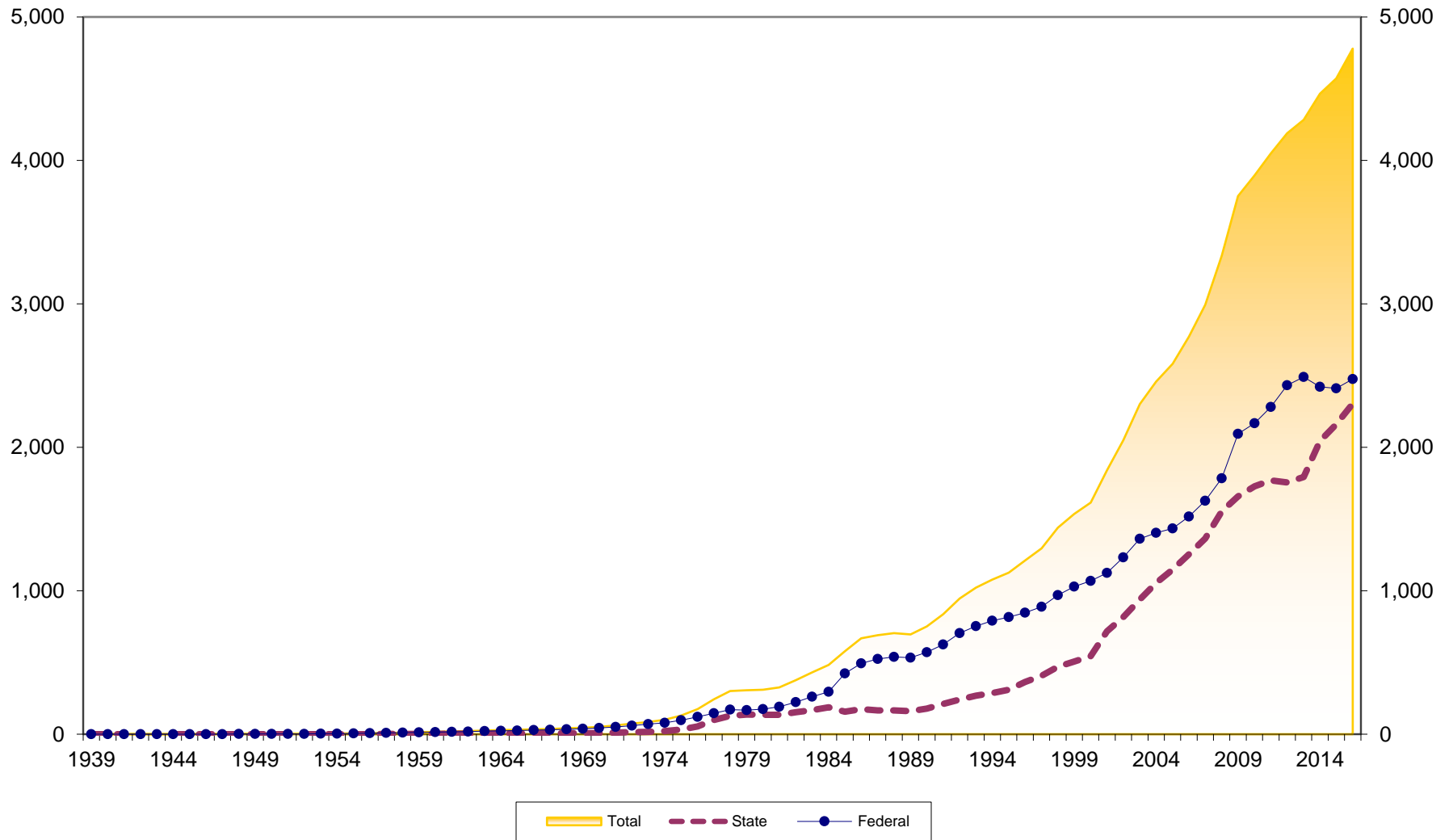
Number of Memberships at Montana Credit Unions 1939-2016



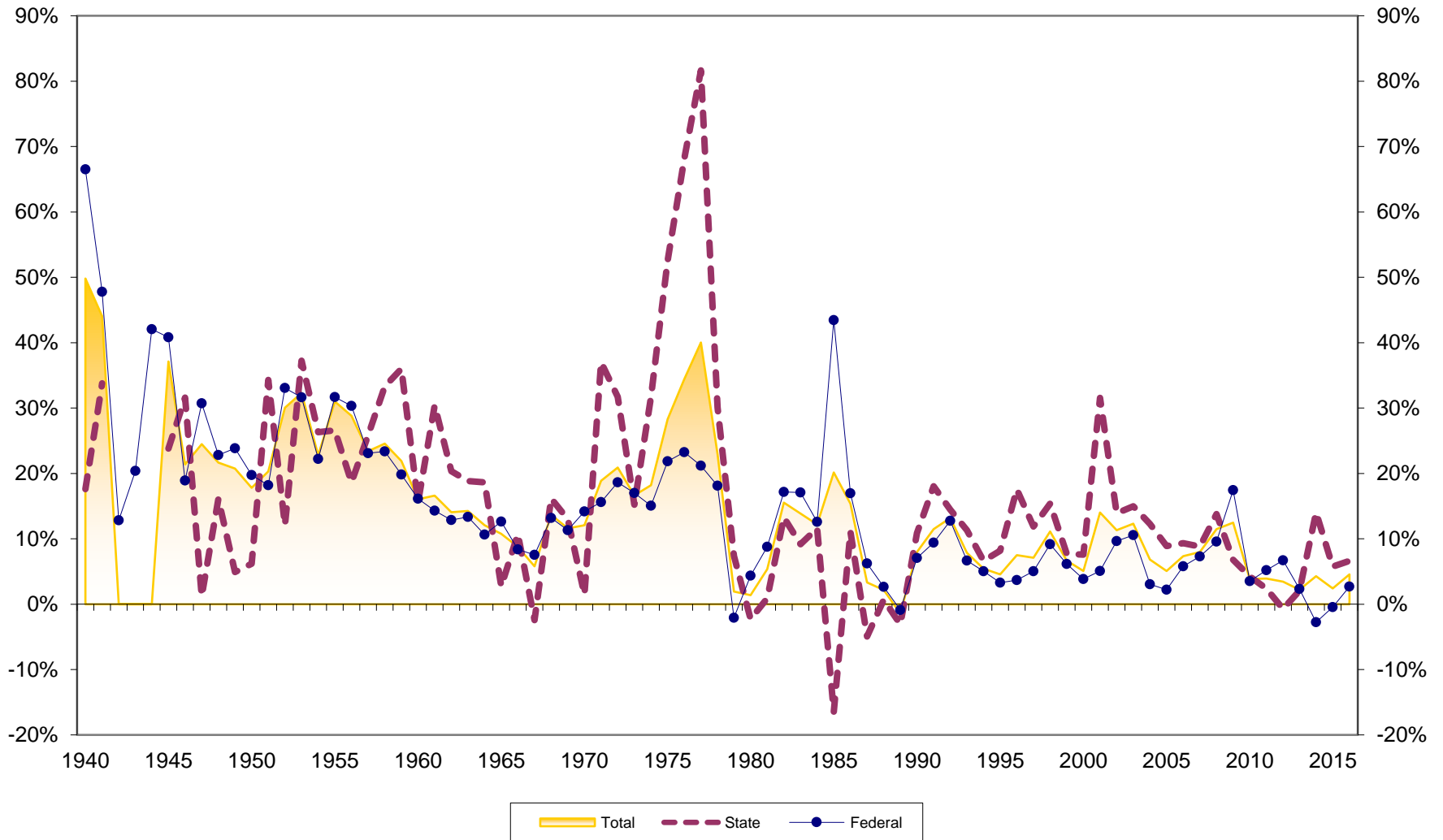
Membership Growth at Montana Credit Unions 1940-2016



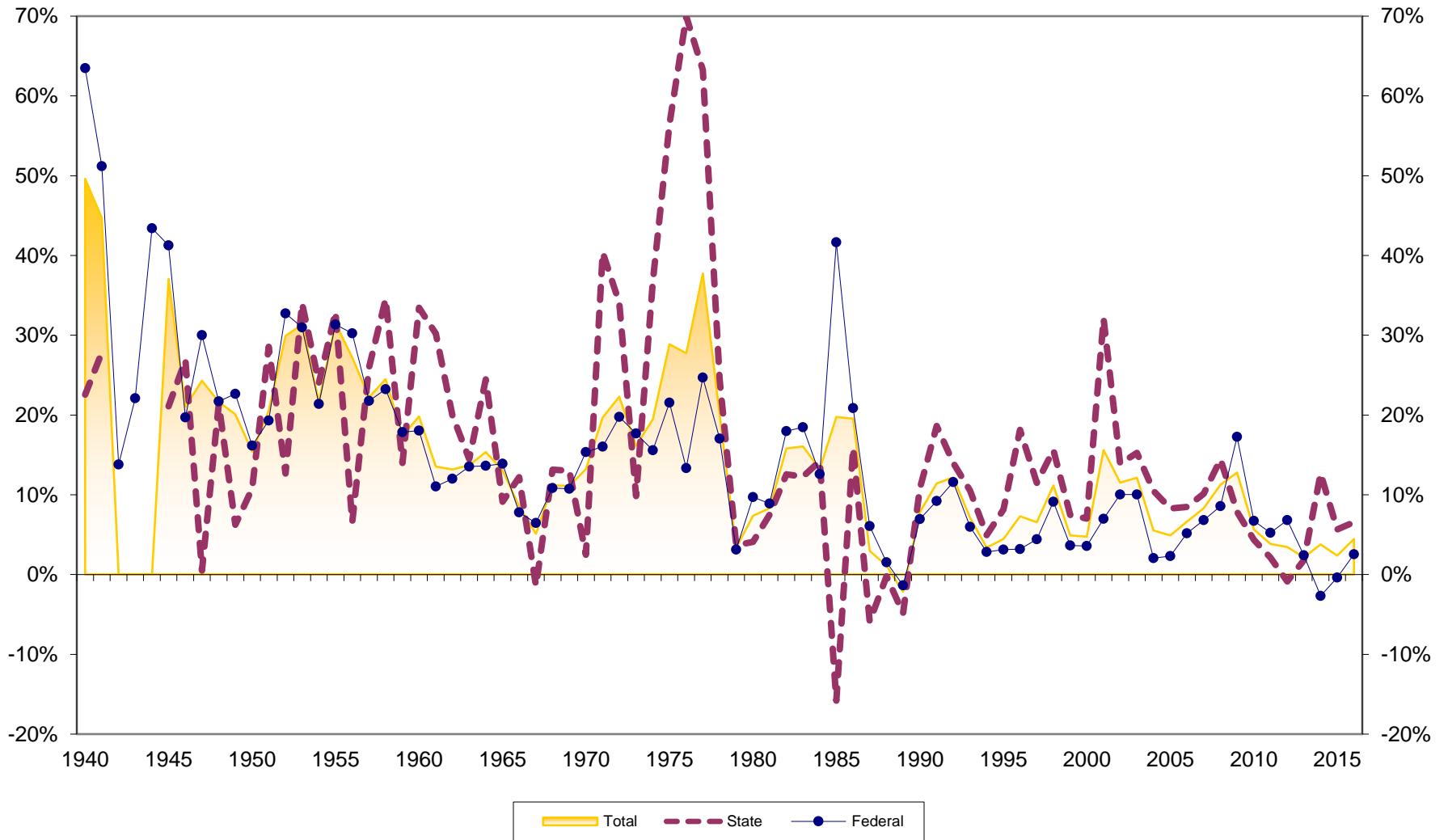
Assets at Montana Credit Unions (in \$Millions) 1939-2016



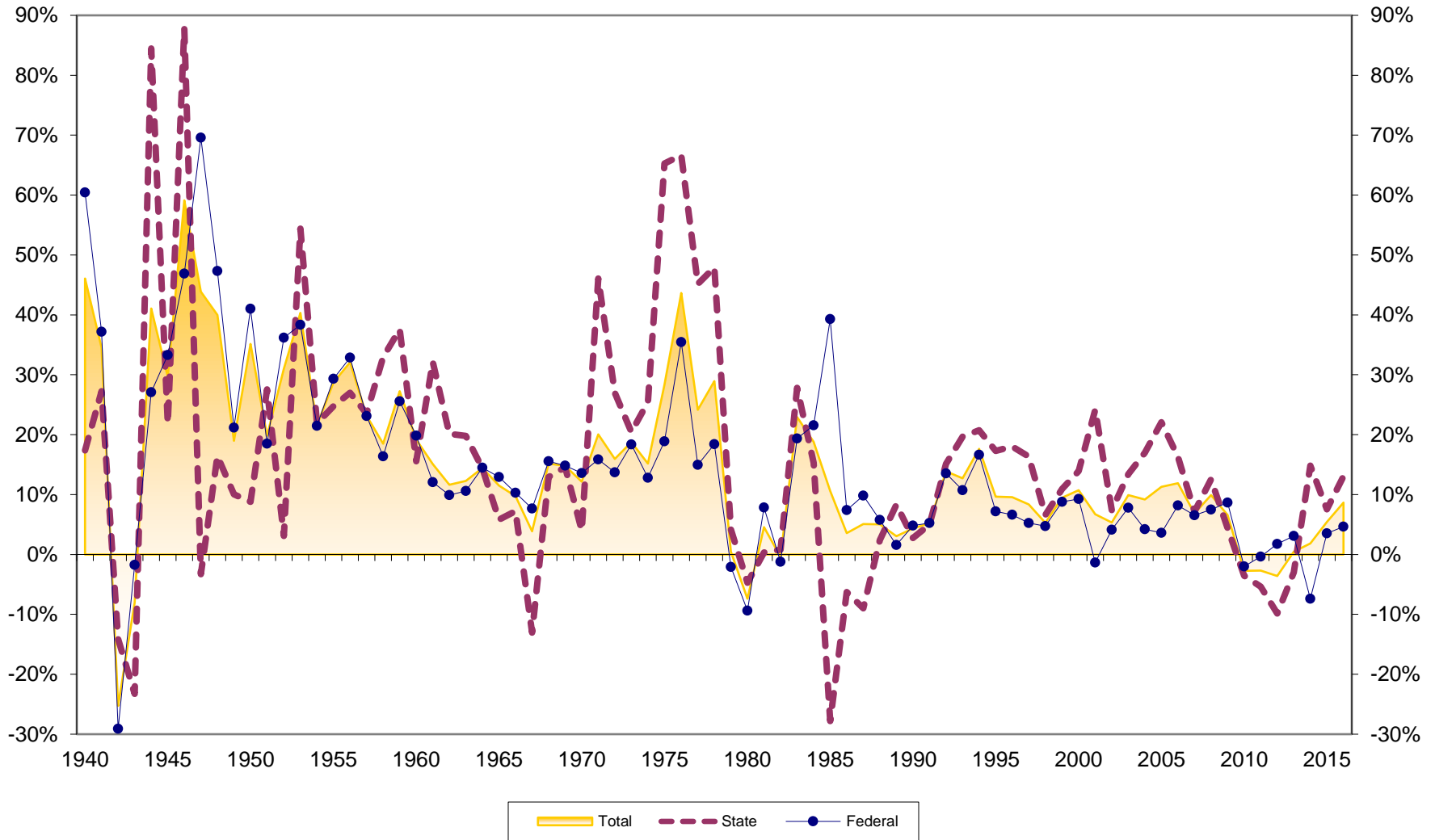
Asset Growth at Montana Credit Unions 1940-2016



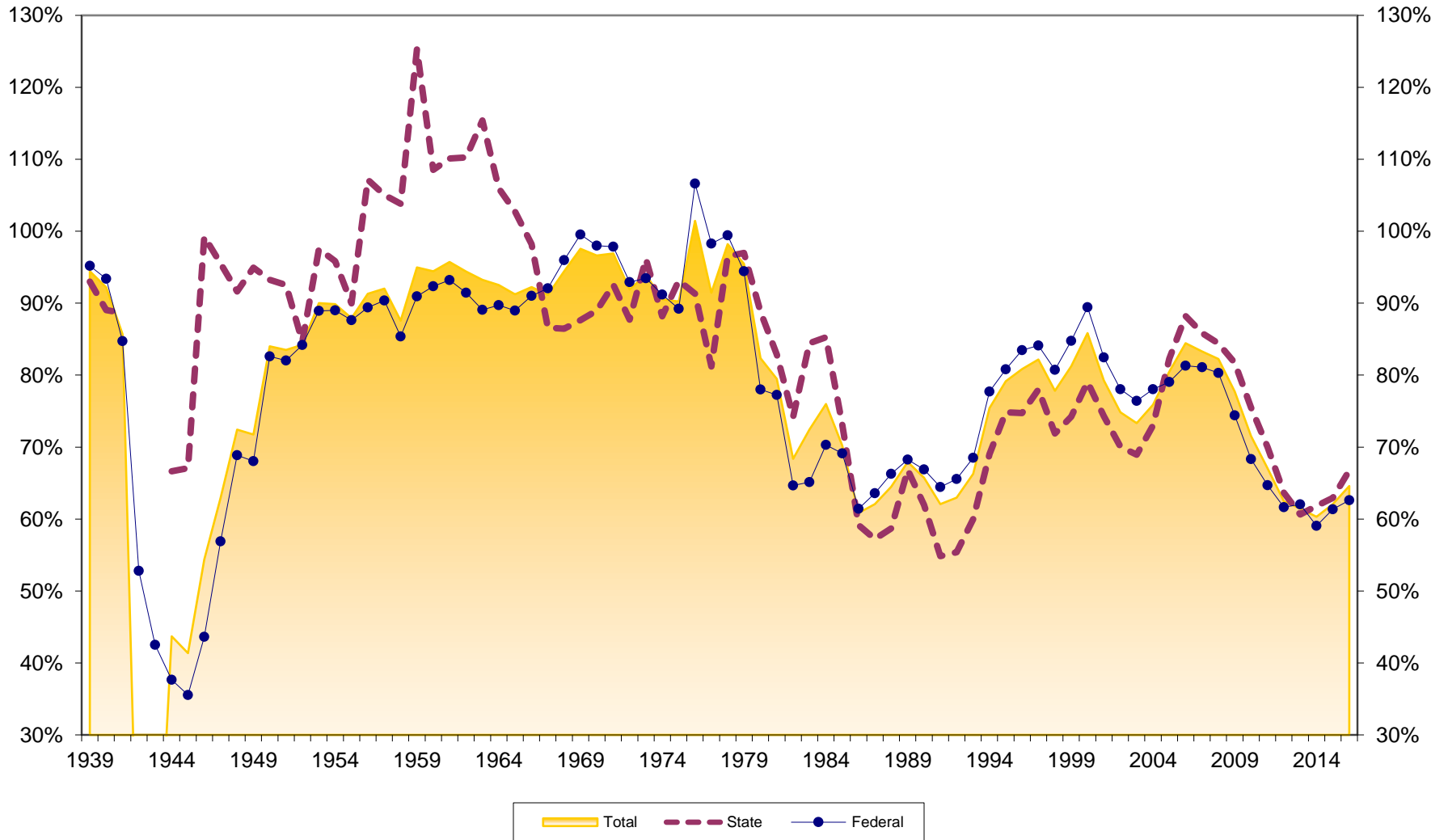
Savings Growth at Montana Credit Unions 1940-2016



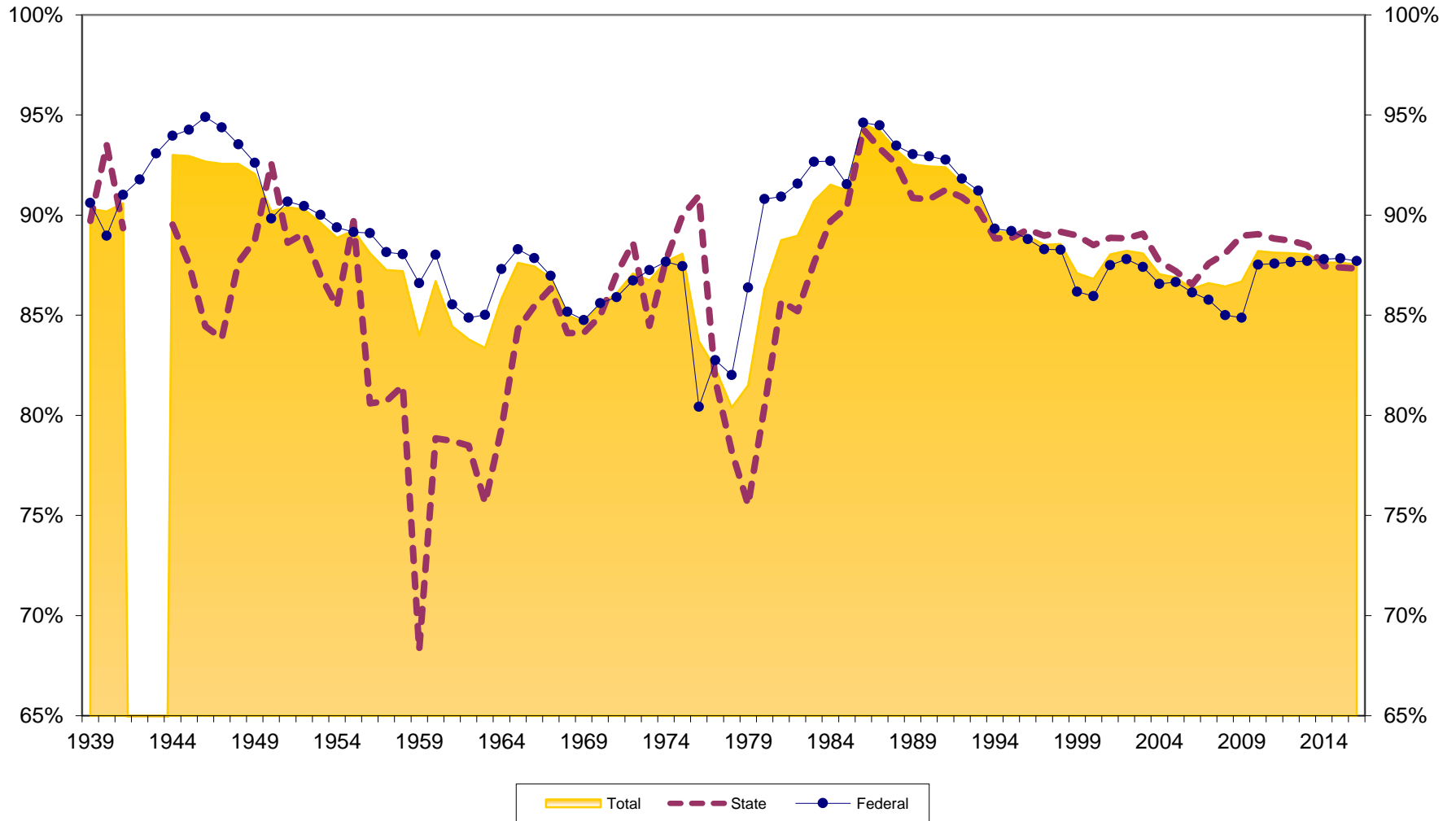
Loan Growth at Montana Credit Unions 1940-2016



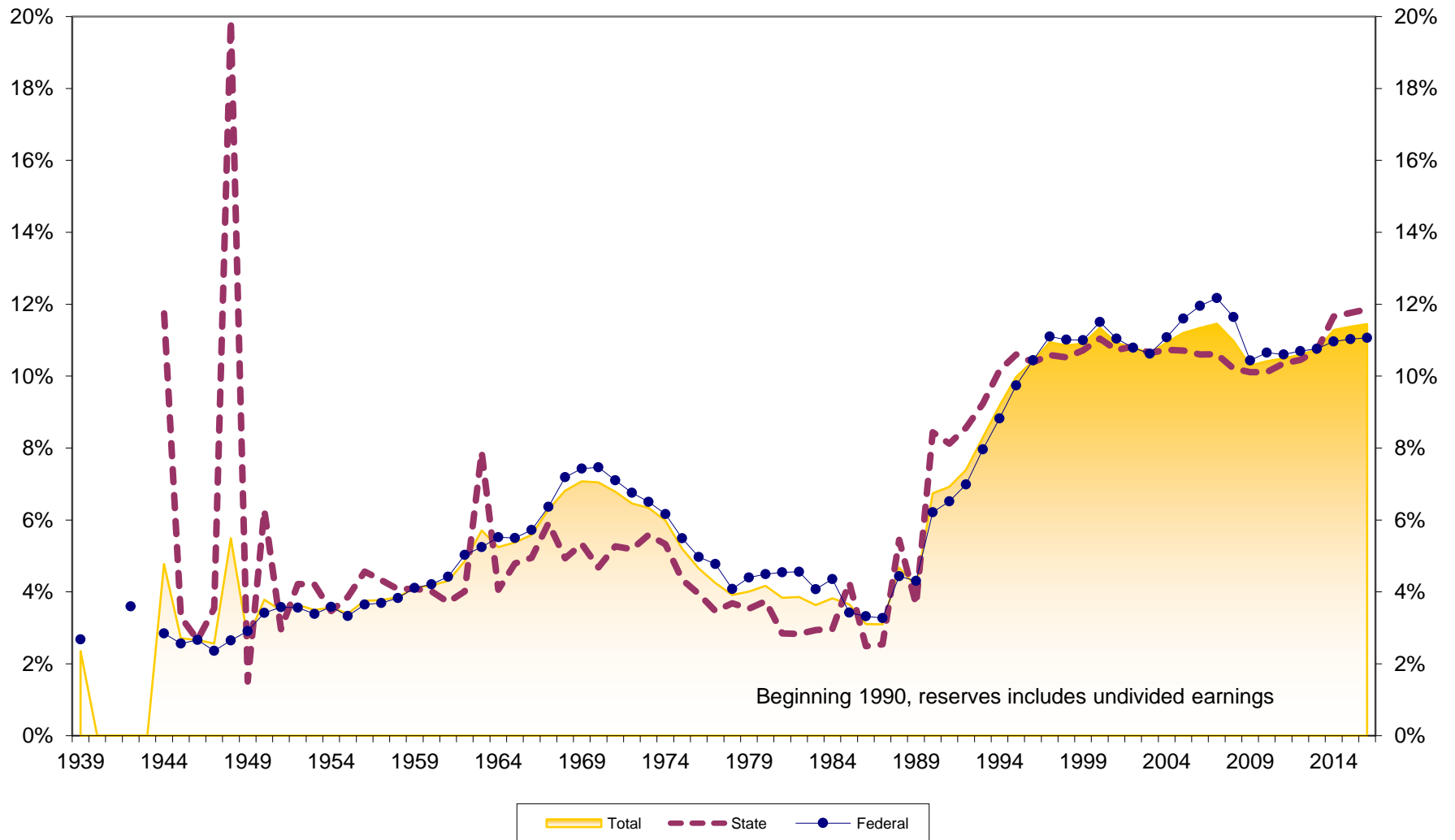
Loans to Savings Ratio at Montana Credit Unions 1939-2016



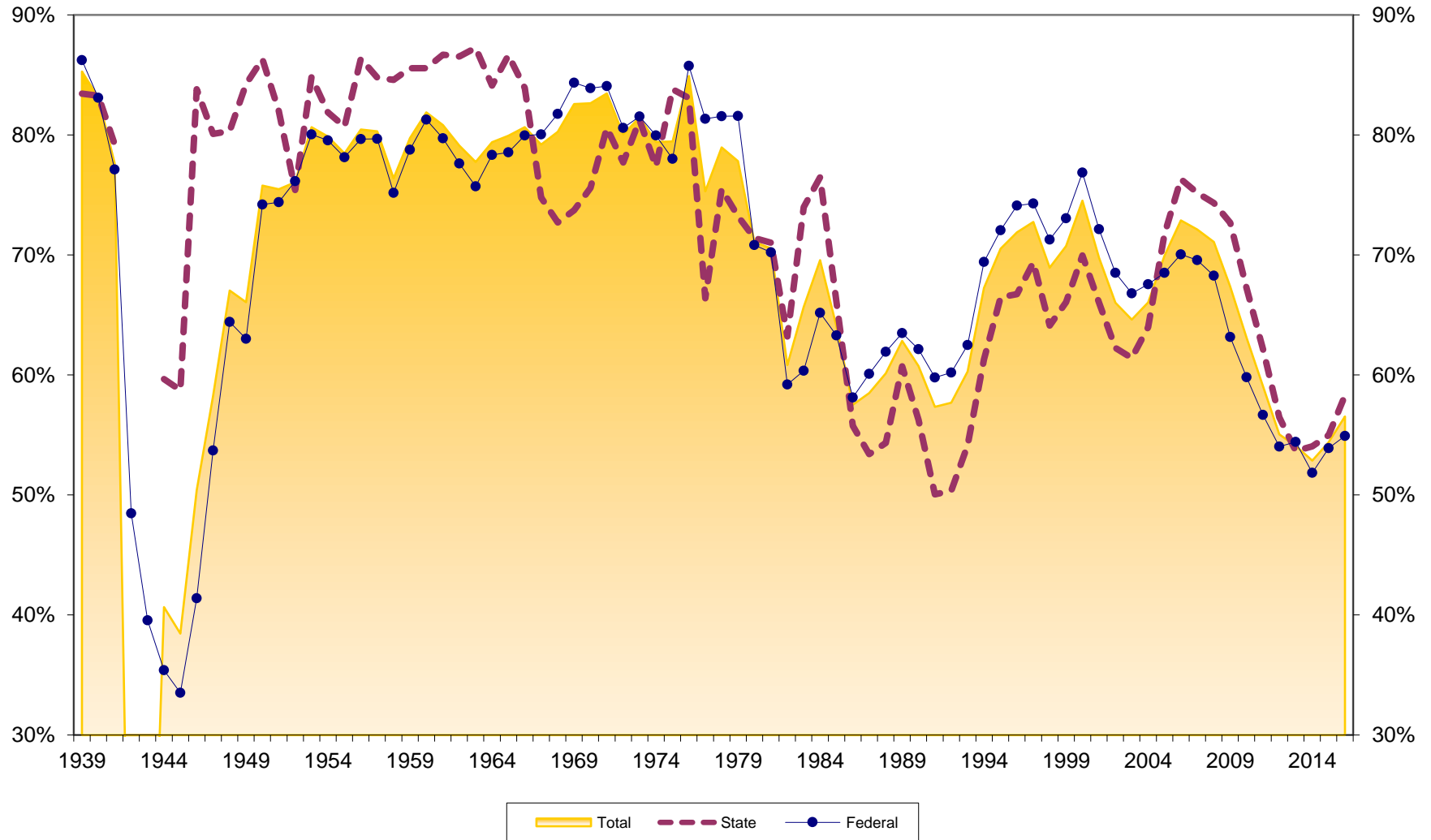
Savings to Assets at Montana Credit Unions 1939-2016



Reserves to Assets at Montana Credit Unions 1939-2016



Loans to Assets at Montana Credit Unions 1939-2016



Dollar Asset Growth at Montana Credit Unions (in \$Millions) 1940-2016

