

## New Jersey Totals Statistics

Year	# of CUs	# of Memberships	Savings (\$)	Loans (\$)	Reserves (\$)*	Assets (\$)
1939	216	71,084	4,265,156	3,209,676	190,568	4,685,058
1940	245	91,848	6,152,368	4,566,673	178,458	6,727,167
1941	276	112,797	8,742,922	5,267,197	0	9,443,724
1942	280	113,361	6,909,792	3,267,671	205,305	7,471,663
1943	282	104,500	6,152,250	2,666,516	0	6,754,000
1944	240	114,225	12,027,205	2,632,417	579,566	13,166,766
1945	247	99,042	11,997,931	2,416,596	526,189	13,734,068
1946	253	102,732	13,335,231	3,491,649	0	15,048,622
1947	251	107,615	15,333,413	5,055,396	534,983	17,229,690
1948	244	112,892	16,860,329	7,015,937	1,024,679	19,024,854
1949	272	120,459	19,131,322	8,421,213	718,616	21,397,249
1950	299	142,685	22,905,672	13,068,213	857,482	26,320,775
1951	325	165,683	29,585,415	14,874,883	1,031,568	32,848,738
1952	358	192,668	38,531,157	20,395,735	1,244,670	42,641,923
1953	401	214,899	48,426,688	27,755,374	1,547,489	53,387,515
1954	442	231,637	57,066,926	32,239,821	1,867,175	62,721,033
1955	466	248,686	66,931,856	38,625,083	2,380,303	73,776,513
1956	487	267,542	77,820,872	44,416,325	3,004,257	85,791,483
1957	506	273,127	84,647,174	49,172,296	3,649,198	93,473,526
1958	506	271,053	89,463,636	50,940,091	4,254,338	99,387,105
1959	521	279,052	96,114,431	57,975,156	5,266,149	107,414,180
1960	526	286,961	101,714,025	69,867,973	6,142,026	115,342,246
1961	528	292,574	109,942,852	75,340,852	7,217,149	123,991,897
1962	530	303,389	120,084,511	81,840,844	8,435,596	135,947,725
1963	535	313,041	130,992,319	88,954,124	9,742,823	148,535,136
1964	544	323,732	145,898,128	96,707,987	11,117,367	165,182,635
1965	546	336,261	160,960,889	110,233,476	12,502,677	182,848,279
1966	558	353,289	171,221,133	121,826,666	14,080,534	196,232,515
1967	564	369,237	183,711,821	128,564,310	15,735,108	210,807,862
1968	580	381,128	198,888,129	150,081,513	17,244,018	228,765,401
1969	606	400,979	220,435,465	180,097,176	19,145,868	258,360,349
1970	601	411,965	244,662,091	195,022,899	20,718,284	287,120,195
1971	602	429,626	284,495,130	219,350,172	22,050,411	331,847,989
1972	608	451,187	329,463,044	248,164,076	23,743,019	381,273,299
1973	619	480,602	377,697,450	286,198,788	26,415,600	437,103,240
1974	631	504,001	424,154,131	315,058,828	28,113,257	483,711,983
1975	626	539,498	507,455,051	349,427,110	31,083,564	581,253,134
1976	641	569,722	589,958,986	420,640,190	34,218,392	685,342,145
1977	648	618,042	702,978,302	511,421,460	37,984,816	812,567,439
1978	645	686,599	831,645,930	625,964,138	35,499,123	937,852,881
1979	670	688,440	869,309,427	683,653,284	39,887,535	981,573,739
1980	666	750,825	939,279,399	659,342,362	41,498,910	1,040,091,035
1981	650	788,861	989,579,859	712,076,632	46,532,423	1,110,719,965
1982	642	823,199	1,187,292,595	742,964,785	48,455,025	1,310,872,333
1983	608	854,466	1,548,186,769	906,259,710	58,676,164	1,701,040,432
1984	582	869,152	1,722,245,079	1,162,584,555	70,678,709	1,887,975,140
1985	523	921,501	2,213,657,795	1,280,462,346	78,046,461	2,399,400,989
1986	496	969,096	2,815,669,130	1,490,082,862	92,393,710	3,028,758,386
1987	477	1,025,230	2,991,142,750	1,697,234,202	1,029,459,170	3,249,221,885
1988	463	1,041,886	3,144,801,623	1,972,748,122	138,657,816	3,419,289,640
1989	442	1,049,438	3,261,466,543	2,157,646,275	129,714,625	3,552,291,176
1990	433	1,040,102	3,387,818,892	2,126,152,540	267,284,987	3,700,270,651
1991	419	1,032,888	3,693,224,892	2,090,889,126	286,531,439	4,034,519,932
1992	393	1,045,186	4,120,240,474	2,153,218,778	324,395,243	4,481,498,063
1993	373	1,067,328	4,374,912,297	2,228,500,655	380,029,295	4,790,681,050
1994	354	1,087,371	4,493,016,012	2,471,661,993	423,810,095	4,960,288,060
1995	342	1,099,097	4,536,320,209	2,621,769,322	478,962,785	5,056,252,565
1996	324	1,111,850	4,684,241,071	2,855,787,874	530,486,907	5,256,187,860
1997	316	1,130,244	4,895,590,112	3,058,684,962	586,437,978	5,527,960,746
1998	309	1,118,885	5,125,181,242	3,133,887,337	624,540,400	5,794,985,731
1999	292	1,132,550	5,343,550,441	3,399,918,052	664,090,364	6,074,024,097
2000	282	1,150,234	5,436,201,139	3,741,158,289	725,080,579	6,248,640,963
2001	271	1,161,528	6,292,730,774	3,984,273,909	787,170,711	7,184,625,141
2002	262	1,187,083	7,385,944,817	4,276,020,373	891,524,059	8,396,002,184
2003	256	1,193,675	8,053,015,369	4,755,036,831	947,521,343	9,117,450,163
2004	248	1,194,530	8,339,353,095	5,033,803,448	1,019,460,289	9,462,118,328
2005	240	1,182,367	8,127,649,324	5,329,472,515	1,058,783,288	9,344,384,556
2006	230	1,188,597	8,158,842,597	5,771,477,399	1,133,466,250	9,474,133,774
2007	223	1,146,910	8,177,741,384	5,984,908,611	1,180,844,936	9,616,545,650
2008	216	1,131,911	8,617,383,034	6,237,023,461	1,201,839,295	10,257,921,002
2009	212	1,125,515	9,925,475,595	6,562,502,124	1,149,035,770	11,405,913,434
2010	207	1,105,294	10,369,160,255	6,591,111,005	1,145,834,941	11,800,231,443
2011	203	1,055,929	10,511,061,514	6,297,205,363	1,173,649,909	11,918,478,399
2012	201	1,065,543	11,081,531,869	6,295,752,340	1,213,590,690	12,517,954,600
2013	196	1,061,431	11,093,228,449	6,530,664,567	1,181,485,944	12,465,326,214
2014	187	1,046,150	11,029,799,231	6,703,374,837	1,268,846,433	12,502,191,722
2015	180	1,035,768	11,270,308,123	7,001,384,994	1,289,529,442	12,797,206,398

\* Beginning 1990, Reserves includes undivided earnings.

# New Jersey State Statistics

Year	# of CUs	# of Memberships	Savings (\$)	Loans (\$)	Reserves (\$)*	Assets (\$)
1939	50	19,292	1,445,672	842,173	122,686	1,583,547
1940	64	23,768	1,914,368	1,087,673	55,772	3,625,167
1941	82	28,218	2,620,168	1,223,197		4,791,724
1942	57	27,889		829,621		
1943	104	30,208		772,516		
1944	65	31,009	4,052,129	693,368	328,446	4,296,932
1945	70	23,191	3,572,212	483,907	249,436	3,846,507
1946	76	23,103	3,721,037	669,060		4,013,299
1947	64	24,157	4,052,409	928,084	175,156	4,373,353
1948	57	26,620	4,590,908	1,351,381	618,314	5,002,299
1949	65	27,254	5,186,982	1,040,610	218,220	5,624,692
1950	61	29,426	5,560,058	2,088,324	242,998	6,090,917
1951	61	32,855	6,853,538	2,410,601	273,662	7,350,413
1952	62	37,212	8,452,277	2,971,731	290,744	8,975,531
1953	67	39,116	10,268,300	3,527,811	349,657	10,923,873
1954	73	39,434	11,014,979	3,657,053	374,881	11,656,048
1955	72	40,569	12,187,217	3,867,932	464,581	13,058,476
1956	72	42,264	13,301,262	4,359,965	525,055	14,133,488
1957	75	39,552	12,951,226	4,190,197	591,486	13,960,105
1958	77	37,137	12,935,129	4,243,436	646,914	13,941,617
1959	79	37,687	13,219,339	4,619,778	666,942	14,252,077
1960	72	37,069	13,002,470	5,143,572	725,375	14,247,166
1961	71	37,224	13,383,578	5,375,567	792,223	14,718,837
1962	69	38,020	13,874,930	5,645,942	853,648	15,245,487
1963	68	37,006	13,924,682	5,716,234	846,276	15,306,289
1964	67	36,766	14,573,128	5,959,987	898,367	16,036,635
1965	67	37,455	15,365,889	7,629,476	926,677	16,913,279
1966	65	37,815	15,533,133	8,219,666	1,047,534	17,180,515
1967	64	38,655	16,574,821	8,484,310	1,156,108	18,396,862
1968	65	39,033	17,576,129	9,527,513	1,201,018	19,549,401
1969	64	39,066	19,208,465	12,752,176	1,187,868	23,923,349
1970	62	38,314	20,747,091	13,611,899	1,269,284	27,688,195
1971	59	38,344	24,811,130	15,519,172	1,341,411	33,127,989
1972	59	38,856	29,200,044	18,053,076	1,569,019	38,458,299
1973	59	39,346	29,904,450	20,703,788	1,857,600	40,833,240
1974	57	38,269	22,753,131	19,340,828	1,518,257	30,124,983
1975	57	38,072	17,701,051	17,405,110	1,779,564	34,162,134
1976	60	40,713	15,678,986	25,028,190	2,018,392	38,491,145
1977	57	43,063	15,155,302	29,822,460	2,283,816	43,829,439
1978	58	46,557	38,700,930	34,846,138	1,970,123	48,099,881
1979	54	45,321	40,162,427	35,601,284	1,963,535	44,837,739
1980	54	45,902	42,125,399	37,516,362	1,465,910	48,270,035
1981	54	45,837	42,311,859	36,977,632	2,047,423	50,707,965
1982	49	46,144	49,340,595	37,226,785	1,490,025	58,282,333
1983	49	44,176	59,186,769	40,659,710	3,140,164	65,040,432
1984	47	46,561	68,020,519	51,727,368	4,263,277	76,026,340
1985	42	48,285	99,944,646	56,706,623	4,627,022	108,699,889
1986	39	52,016	140,756,521	66,039,841	5,207,861	151,446,667
1987	36	50,682	166,607,690	78,802,904	5,967,801	179,435,038
1988	34	53,476	179,781,862	91,161,417	7,136,895	193,053,224
1989	33	54,318	179,974,840	102,006,103	7,012,196	195,223,143
1990	31	55,672	193,607,250	107,121,511	14,621,818	210,887,494
1991	31	55,701	207,689,549	117,230,571	16,507,937	226,481,340
1992	28	54,007	232,623,280	125,136,415	19,260,457	253,784,777
1993	26	49,905	210,972,924	111,542,116	20,083,285	232,414,704
1994	25	51,850	214,928,086	120,356,723	23,996,419	240,726,719
1995	26	55,136	222,113,571	130,187,859	27,360,395	251,326,071
1996	26	56,831	225,284,251	139,233,708	30,565,079	257,625,204
1997	27	66,630	247,447,328	157,854,732	33,298,407	283,418,410
1998	27	60,974	251,228,128	153,468,805	35,808,494	288,841,769
1999	27	62,203	260,860,183	161,428,325	38,567,262	301,842,662
2000	26	63,623	262,950,708	178,385,451	42,461,834	307,867,530
2001	25	60,576	283,303,075	187,409,268	44,048,373	329,604,112
2002	21	65,127	325,833,819	211,550,296	46,990,297	375,253,429
2003	21	65,459	362,079,391	270,589,307	51,468,175	425,790,347
2004	20	68,862	395,271,122	289,970,743	56,482,367	454,916,376
2005	19	70,575	396,163,468	310,000,864	60,559,866	460,589,184
2006	19	70,849	404,130,522	310,301,262	63,135,410	471,750,574
2007	19	71,621	404,444,710	311,826,148	66,562,702	475,107,225
2008	19	75,696	433,308,807	323,379,118	68,565,835	506,732,086
2009	19	75,956	500,813,168	348,573,809	65,711,009	574,134,575
2010	19	77,683	526,265,271	361,997,939	66,161,699	597,661,011
2011	19	78,964	540,141,118	390,901,701	67,978,554	610,574,199
2012	19	80,789	574,442,296	408,285,800	68,828,393	646,416,506
2013	19	82,053	590,410,675	448,337,560	68,193,373	662,695,290
2014	16	79,535	580,916,296	469,983,739	70,172,685	658,069,634
2015	16	75,422	580,030,275	454,762,832	68,576,187	653,114,260

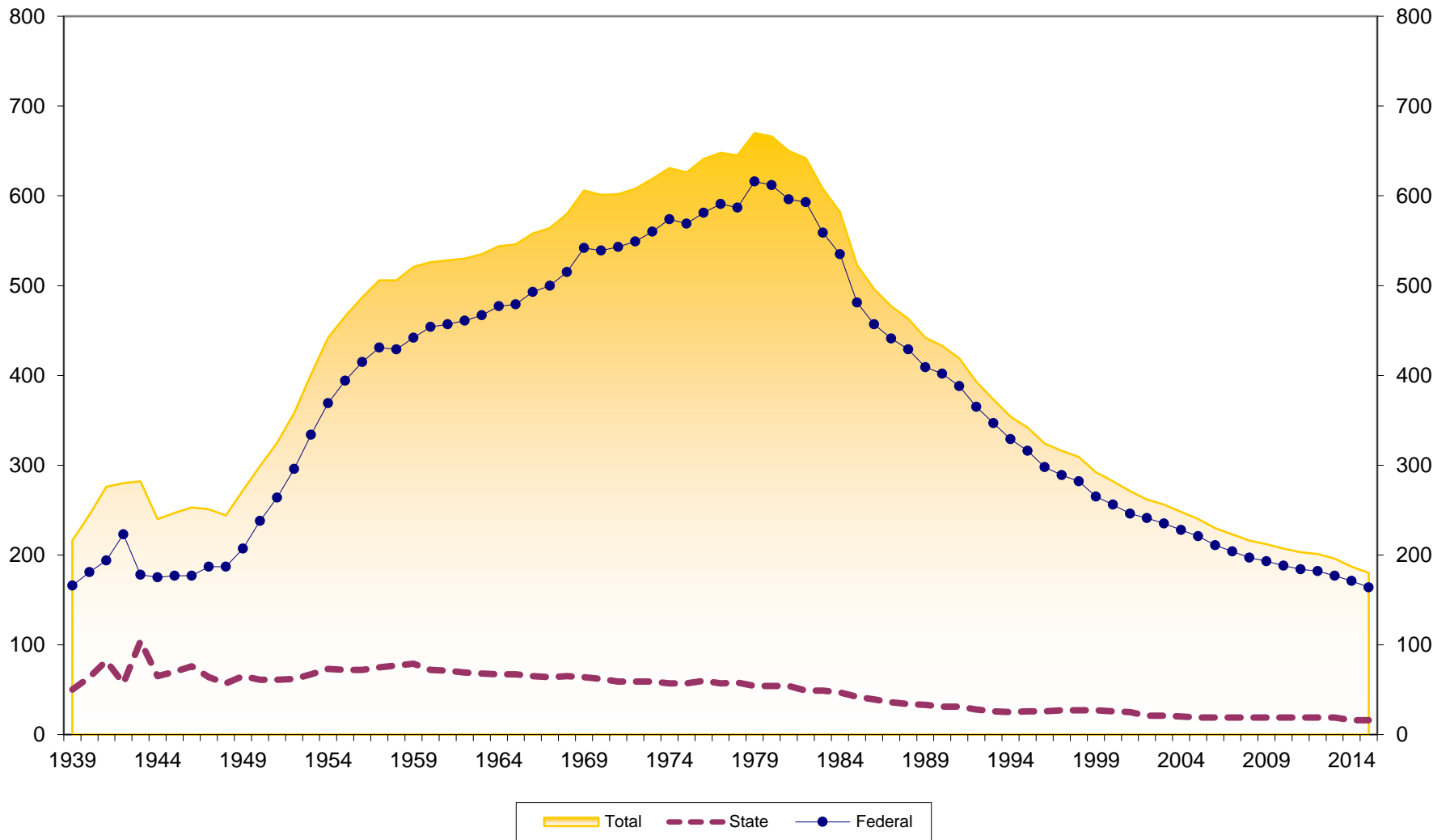
\* Beginning 1990, Reserves includes undivided earnings.

## New Jersey Federal Statistics

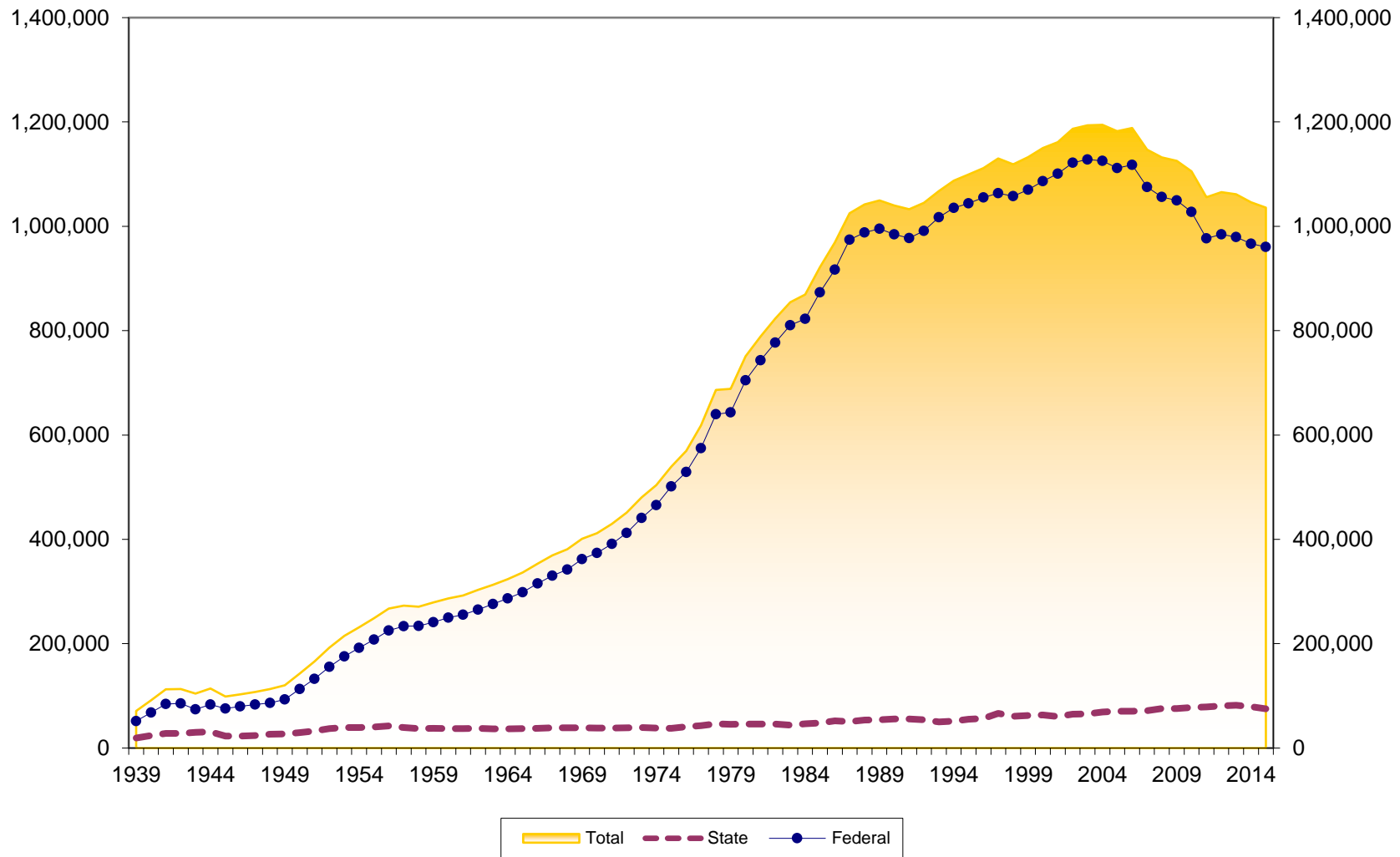
Year	# of CUs	# of Memberships	Savings (\$)	Loans (\$)	Reserves (\$)*	Assets (\$)
1939	166	51,792	2,819,484	2,367,503	67,882	3,101,511
1940	181	68,080	4,238,000	3,479,000	122,686	3,102,000
1941	194	84,579	6,122,754	4,044,000		4,652,000
1942	223	85,472	6,909,792	2,438,050	205,305	7,471,663
1943	178	74,292	6,152,250	1,894,000		6,754,000
1944	175	83,216	7,975,076	1,939,049	251,120	8,869,834
1945	177	75,851	8,425,719	1,932,689	276,753	9,887,561
1946	177	79,629	9,614,194	2,822,589		11,035,323
1947	187	83,458	11,281,004	4,127,312	359,827	12,856,337
1948	187	86,272	12,269,421	5,664,556	406,365	14,022,555
1949	207	93,205	13,944,340	7,380,603	500,396	15,772,557
1950	238	113,259	17,345,614	10,979,889	614,484	20,229,858
1951	264	132,828	22,731,877	12,464,282	757,906	25,498,325
1952	296	155,456	30,078,880	17,424,004	953,926	33,666,392
1953	334	175,783	38,158,388	24,227,563	1,197,832	42,463,642
1954	369	192,203	46,051,947	28,582,768	1,492,294	51,064,985
1955	394	208,117	54,744,639	34,757,151	1,915,722	60,718,037
1956	415	225,278	64,519,610	40,056,360	2,479,202	71,657,995
1957	431	233,575	71,695,948	44,982,099	3,057,712	79,513,421
1958	429	233,916	76,528,507	46,696,655	3,607,424	85,445,488
1959	442	241,365	82,895,092	53,355,378	4,599,207	93,162,103
1960	454	249,892	88,711,555	64,724,401	5,416,651	101,095,080
1961	457	255,350	96,559,274	69,965,285	6,424,926	109,273,060
1962	461	265,369	106,209,581	76,194,902	7,581,948	120,702,238
1963	467	276,035	117,067,637	83,237,890	8,896,547	133,228,847
1964	477	286,966	131,325,000	90,748,000	10,219,000	149,146,000
1965	479	298,806	145,595,000	102,604,000	11,576,000	165,935,000
1966	493	315,474	155,688,000	113,607,000	13,033,000	179,052,000
1967	500	330,582	167,137,000	120,080,000	14,579,000	192,411,000
1968	515	342,095	181,312,000	140,554,000	16,043,000	209,216,000
1969	542	361,913	201,227,000	167,345,000	17,958,000	234,437,000
1970	539	373,651	223,915,000	181,411,000	19,449,000	259,432,000
1971	543	391,282	259,684,000	203,831,000	20,709,000	298,720,000
1972	549	412,331	300,263,000	230,111,000	22,174,000	342,815,000
1973	560	441,256	347,793,000	265,495,000	24,558,000	396,270,000
1974	574	465,732	401,401,000	295,718,000	26,595,000	453,587,000
1975	569	501,426	489,754,000	332,022,000	29,304,000	547,091,000
1976	581	529,009	574,280,000	395,612,000	32,200,000	646,851,000
1977	591	574,979	687,823,000	481,599,000	35,701,000	768,738,000
1978	587	640,042	792,945,000	591,118,000	33,529,000	889,753,000
1979	616	643,119	829,147,000	648,052,000	37,924,000	936,736,000
1980	612	704,923	897,154,000	621,826,000	40,033,000	991,821,000
1981	596	743,024	947,268,000	675,099,000	44,485,000	1,060,012,000
1982	593	777,055	1,137,952,000	705,738,000	46,965,000	1,252,590,000
1983	559	810,290	1,489,000,000	865,600,000	55,536,000	1,636,000,000
1984	535	822,591	1,654,224,560	1,110,857,187	66,415,432	1,811,948,800
1985	481	873,216	2,113,713,149	1,223,755,723	73,419,439	2,290,701,100
1986	457	917,080	2,674,912,609	1,424,043,021	87,185,849	2,877,311,719
1987	441	974,548	2,824,535,060	1,618,431,298	96,491,369	3,069,786,847
1988	429	988,410	2,965,019,761	1,881,586,705	131,520,921	3,226,236,416
1989	409	995,120	3,081,491,703	2,055,640,172	122,702,429	3,357,068,033
1990	402	984,430	3,194,211,642	2,019,031,029	252,663,169	3,489,383,157
1991	388	977,187	3,485,535,343	1,973,658,555	270,023,502	3,808,038,592
1992	365	991,179	3,887,617,194	2,028,082,363	305,134,786	4,227,713,286
1993	347	1,017,423	4,163,939,373	2,116,958,539	359,946,010	4,558,266,346
1994	329	1,035,521	4,278,087,926	2,351,305,270	399,813,676	4,719,561,341
1995	316	1,043,961	4,314,206,638	2,491,581,463	451,602,390	4,804,926,494
1996	298	1,055,019	4,458,956,820	2,716,554,166	499,921,828	4,998,562,656
1997	289	1,063,614	4,648,142,784	2,900,830,230	553,139,571	5,244,542,336
1998	282	1,057,911	4,873,953,114	2,980,418,532	588,731,906	5,506,143,962
1999	265	1,070,347	5,082,690,258	3,238,489,727	625,523,102	5,772,181,435
2000	256	1,086,611	5,173,250,431	3,562,772,838	682,618,745	5,940,773,433
2001	246	1,100,952	6,009,427,699	3,796,864,641	743,122,338	6,855,021,029
2002	241	1,121,956	7,060,110,998	4,064,470,077	844,533,762	8,020,748,755
2003	235	1,128,216	7,690,935,978	4,484,447,524	896,053,168	8,691,659,816
2004	228	1,125,668	7,944,081,973	4,743,832,705	962,977,922	9,007,201,952
2005	221	1,111,792	7,731,485,856	5,019,471,651	998,223,422	8,883,795,372
2006	211	1,117,748	7,754,712,075	5,461,176,137	1,070,330,840	9,002,383,200
2007	204	1,075,289	7,773,296,674	5,673,082,463	1,114,282,234	9,141,438,425
2008	197	1,056,215	8,184,074,227	5,913,644,343	1,133,273,460	9,751,188,916
2009	193	1,049,559	9,424,662,427	6,213,928,315	1,083,324,761	10,831,778,859
2010	188	1,027,611	9,842,894,984	6,229,113,066	1,079,673,242	11,202,570,432
2011	184	976,965	9,970,920,396	5,906,303,662	1,105,671,355	11,307,904,200
2012	182	984,754	10,507,089,573	5,887,466,540	1,144,762,297	11,871,538,094
2013	177	979,378	10,502,817,774	6,082,327,007	1,113,292,571	11,802,630,924
2014	171	966,615	10,448,882,935	6,233,391,098	1,198,673,748	11,844,122,088
2015	164	960,346	10,690,277,848	6,546,622,162	1,220,953,255	12,144,092,138

\* Beginning 1990, Reserves includes undivided earnings.

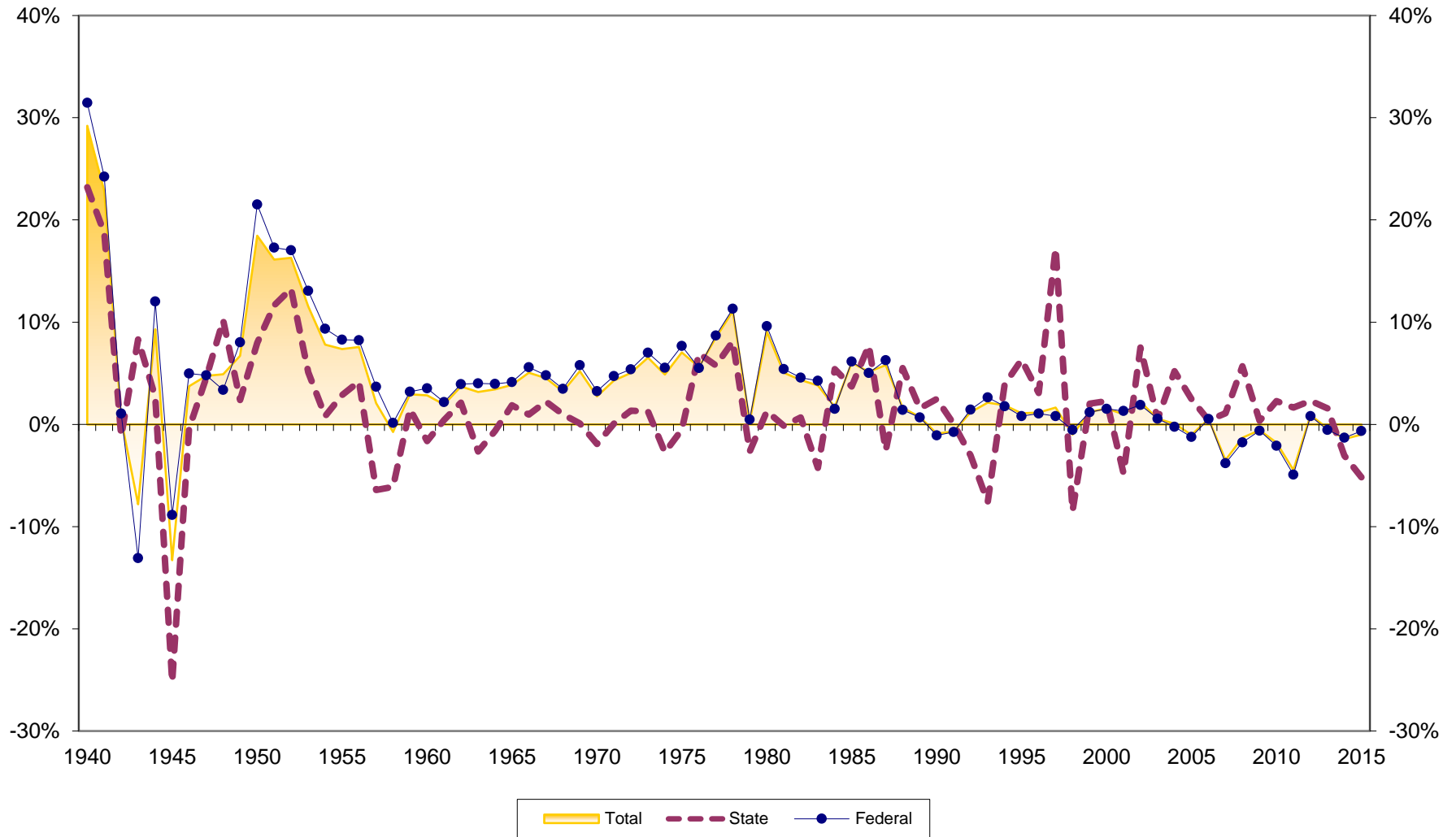
# Number of New Jersey Credit Unions 1939-2015



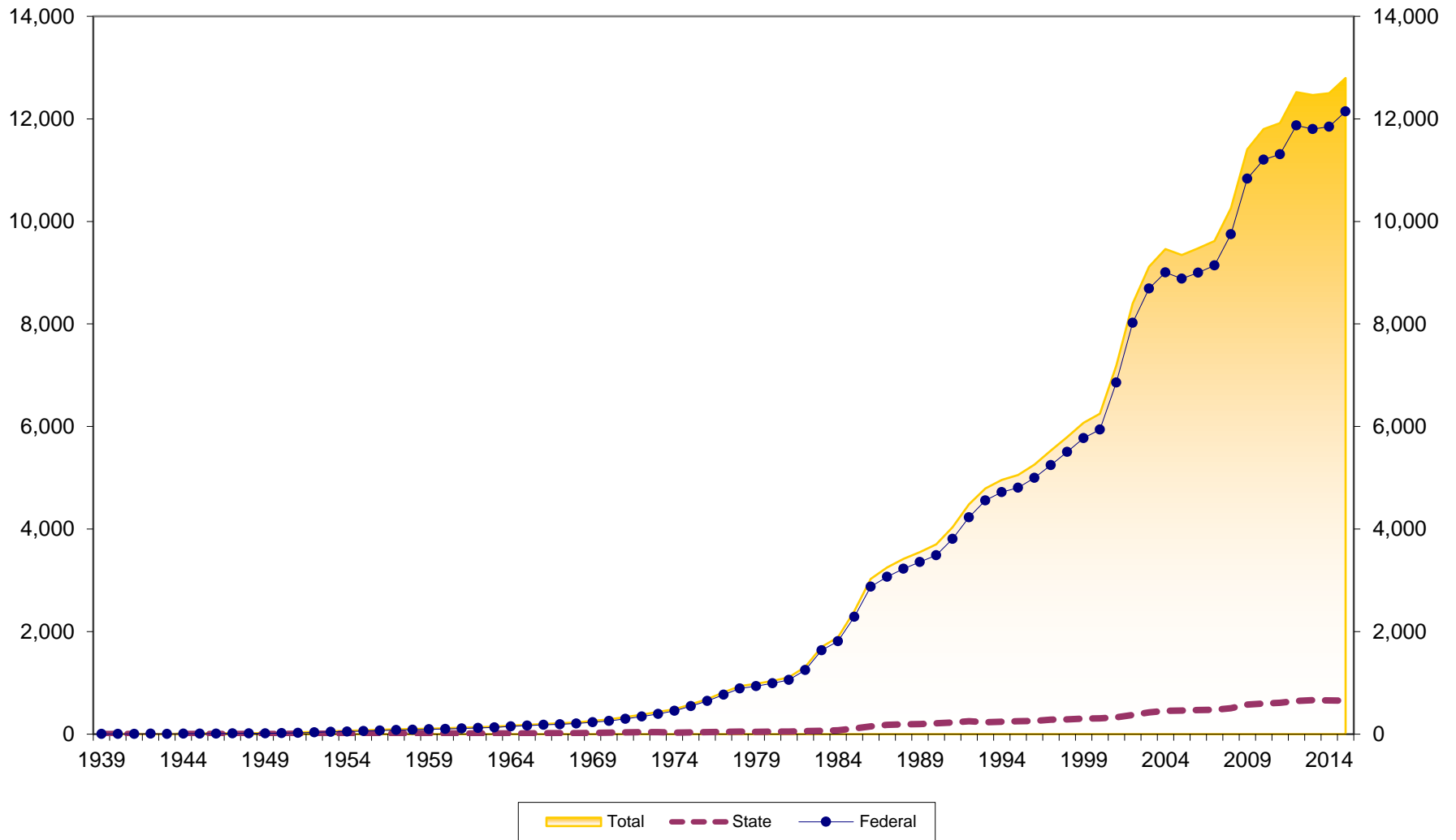
# Number of Memberships at New Jersey Credit Unions 1939-2015



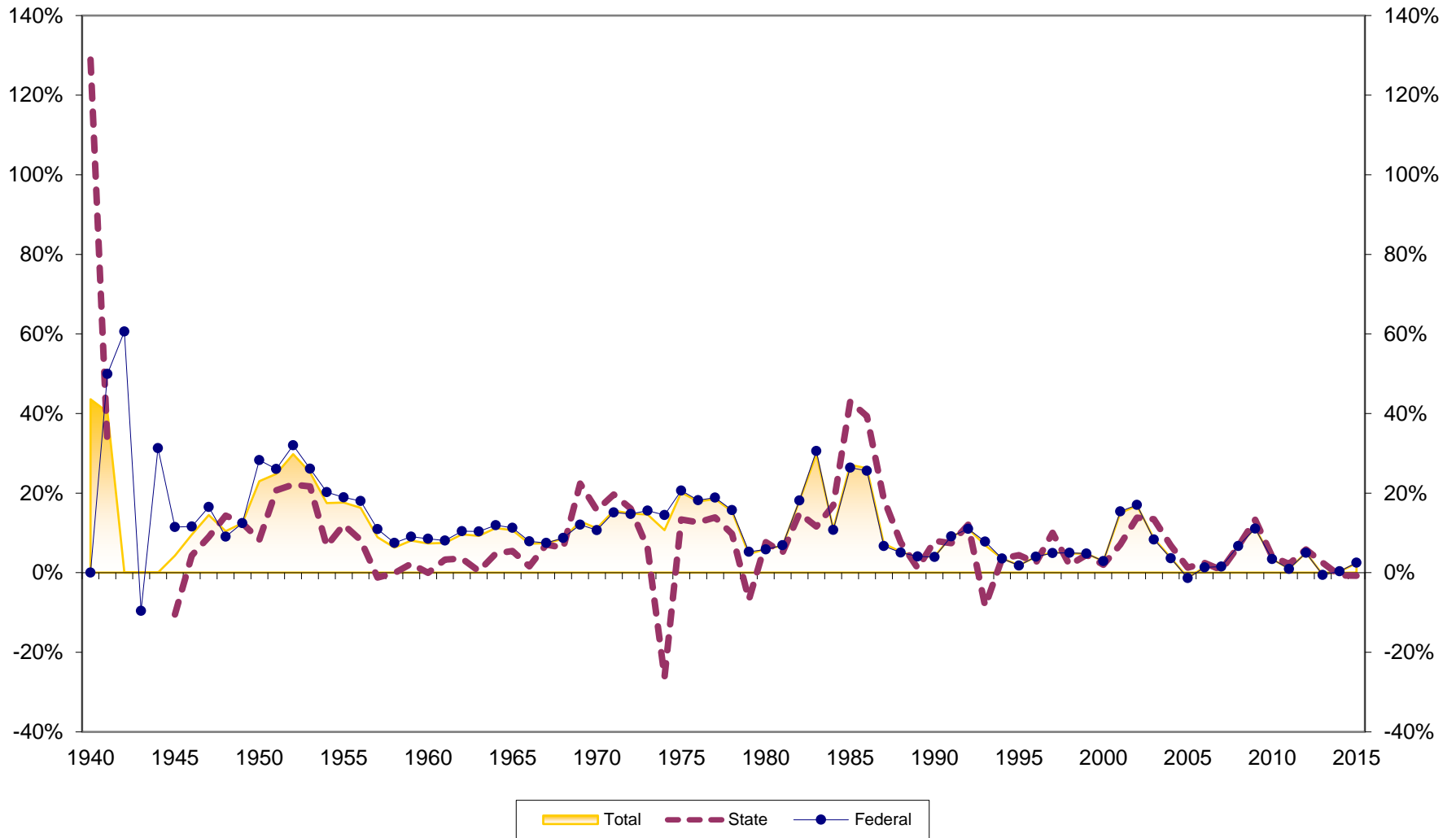
# Membership Growth at New Jersey Credit Unions 1940-2015



# Assets at New Jersey Credit Unions (in \$Millions) 1939-2015

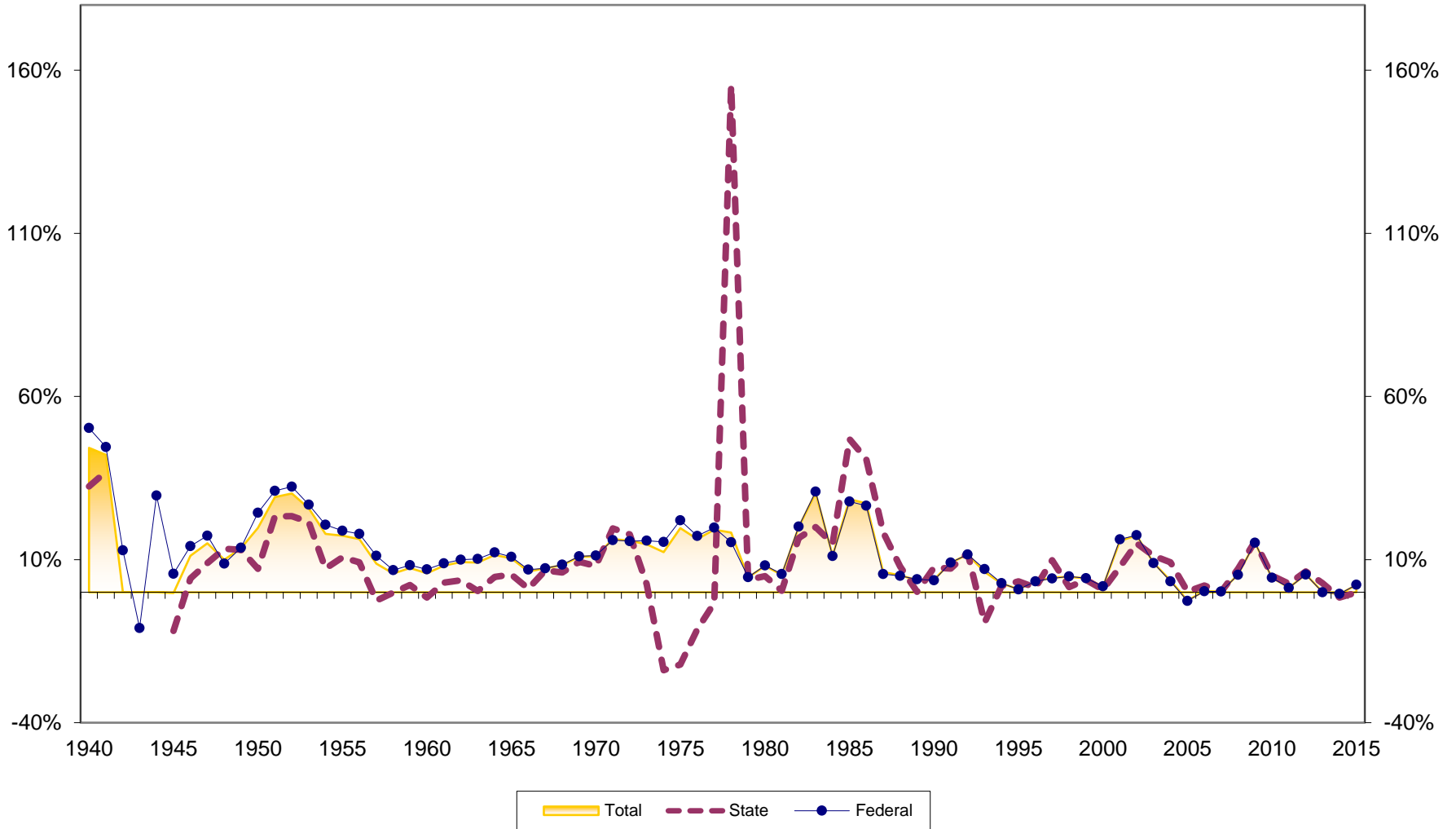


# Asset Growth at New Jersey Credit Unions 1940-2015

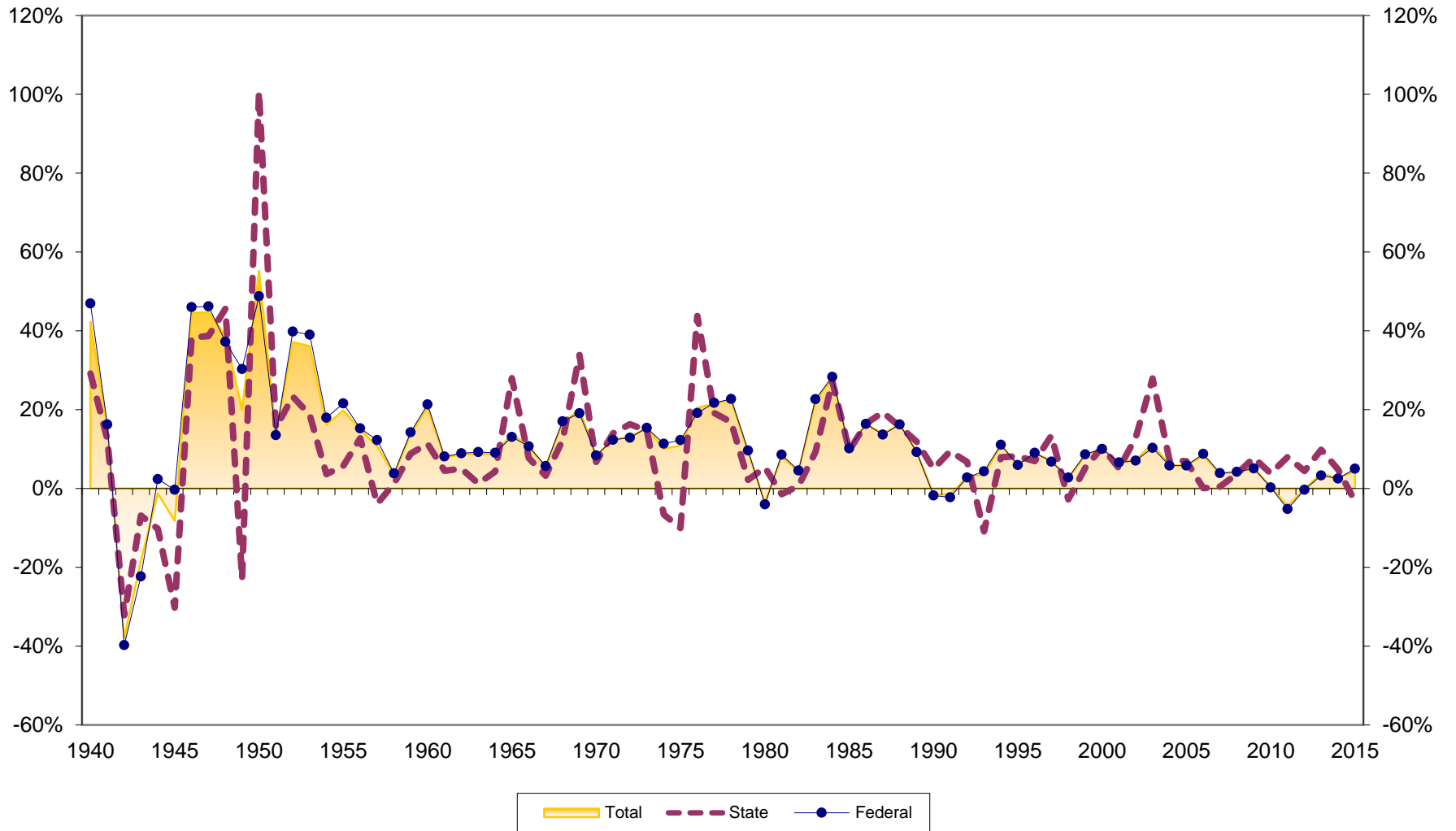




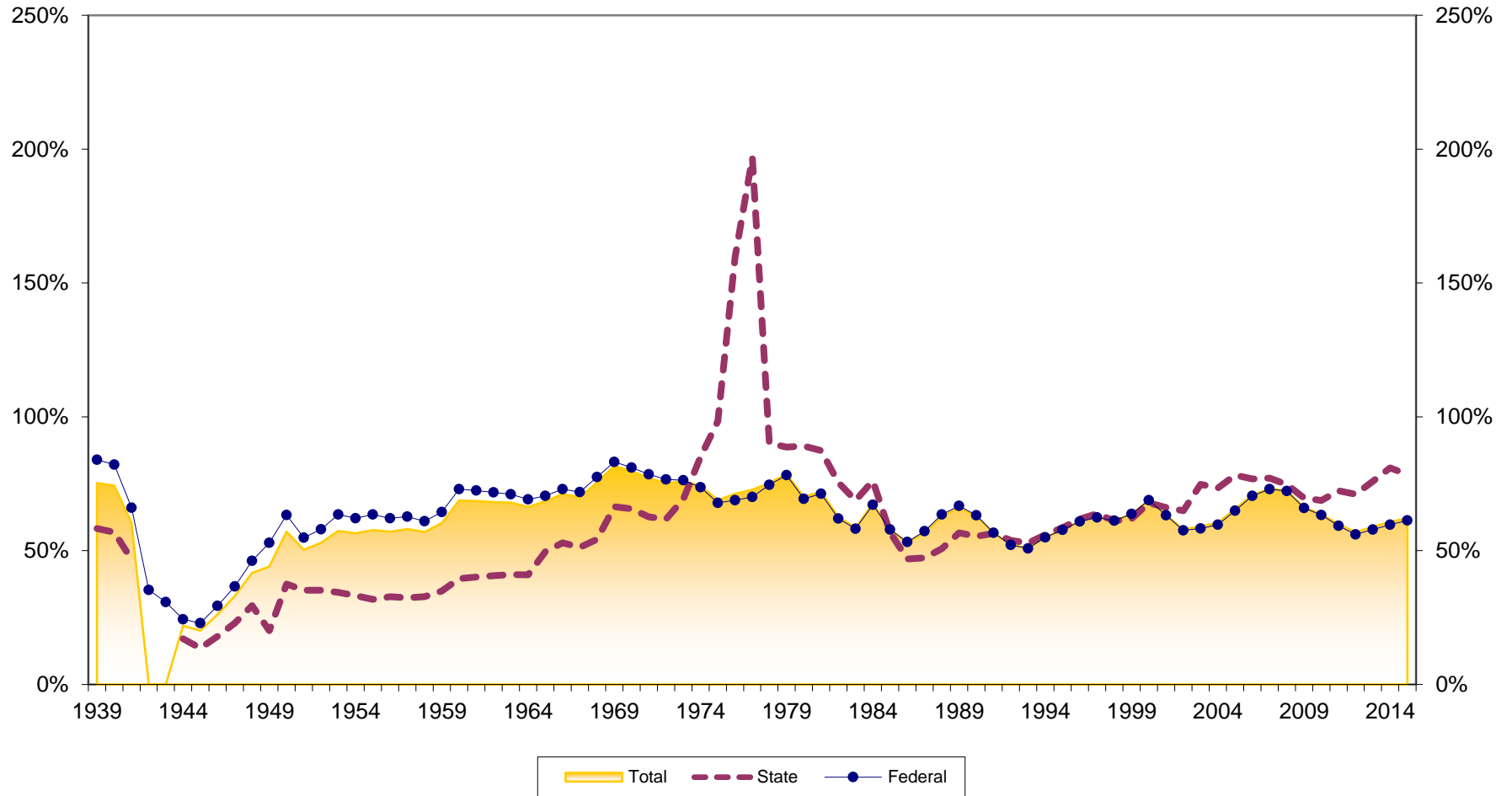
# Savings Growth at New Jersey Credit Unions 1940-2015



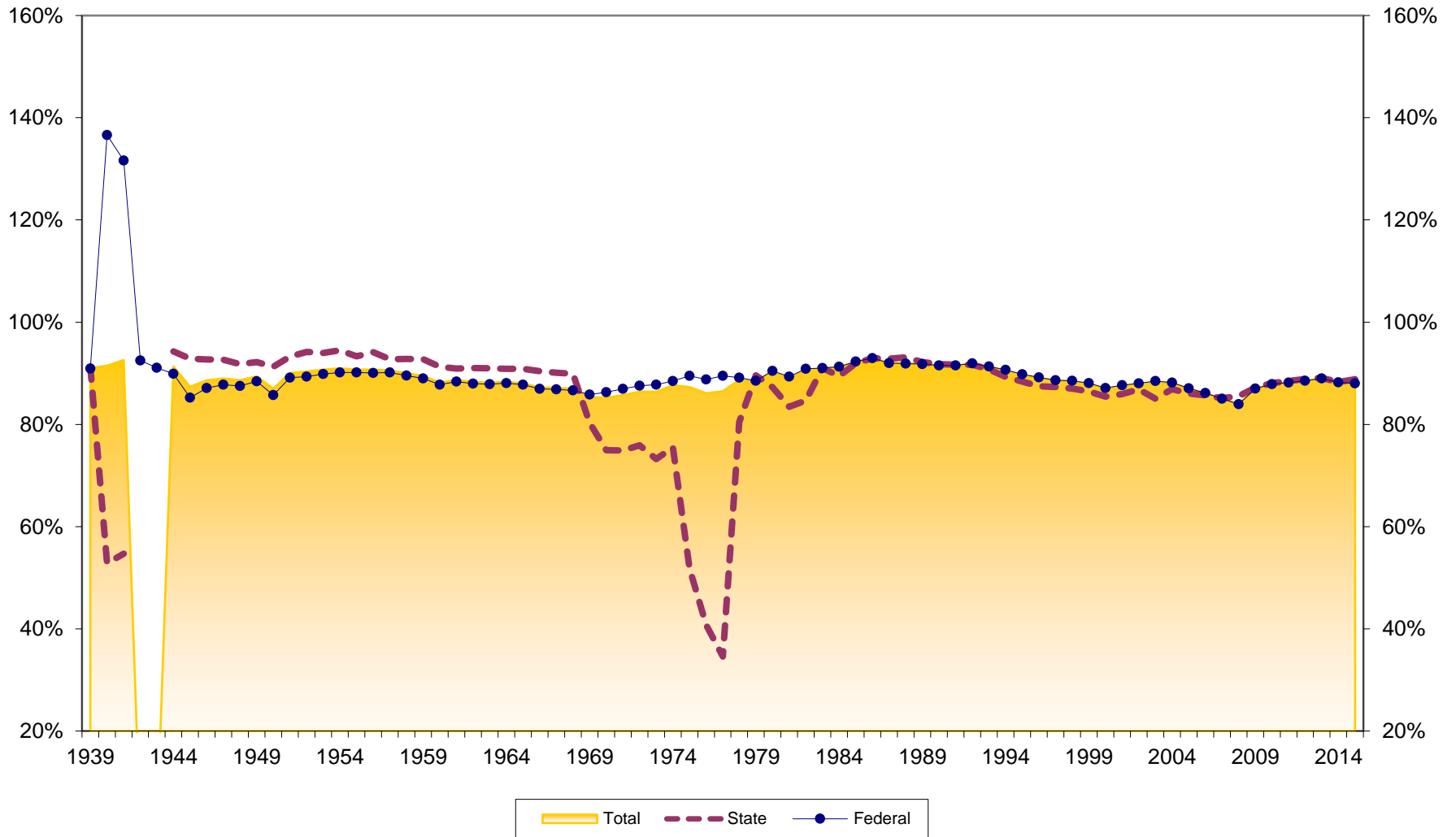
# Loan Growth at New Jersey Credit Unions 1940-2015



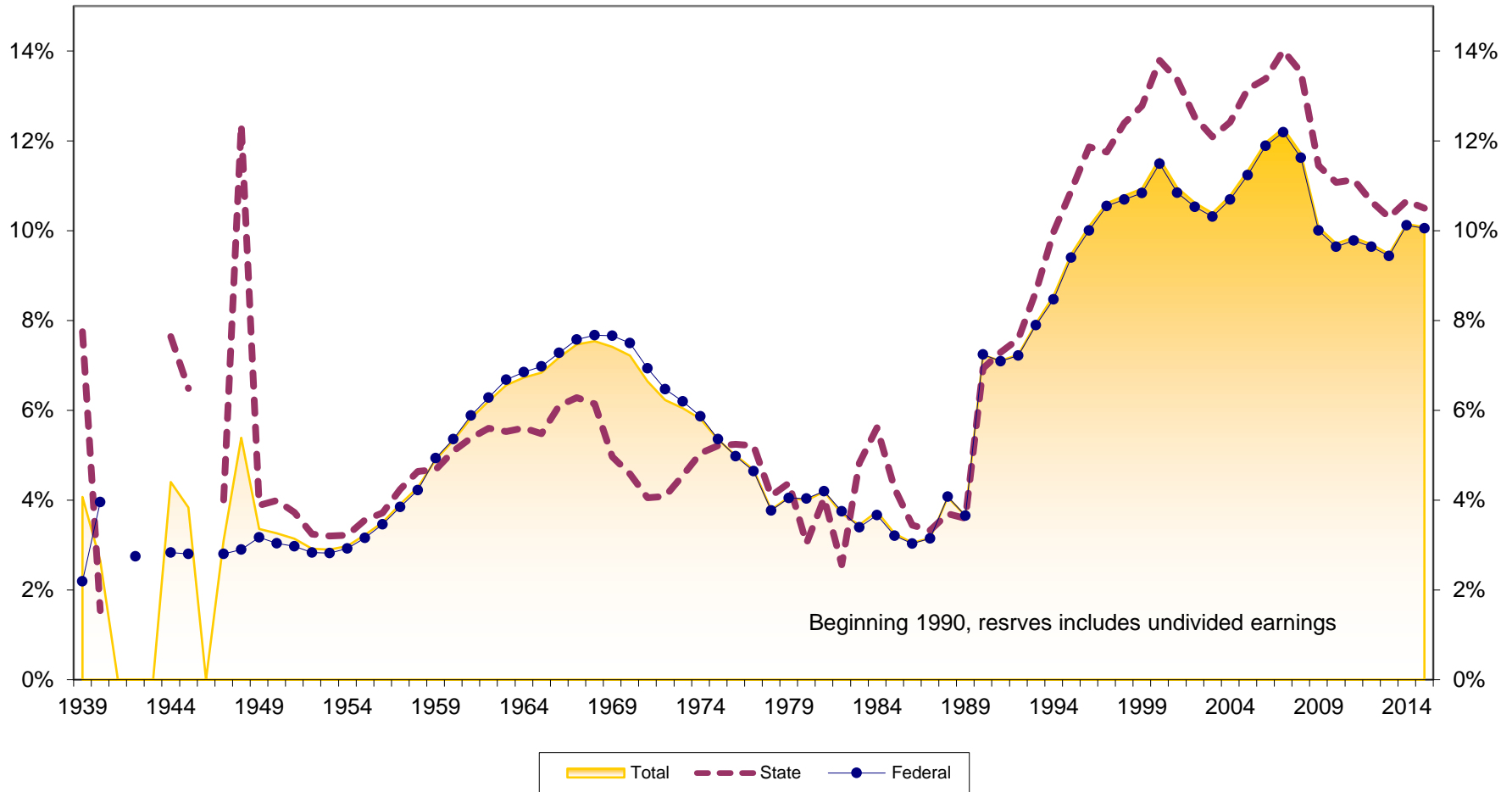
# Loans to Savings Ratio at New Jersey Credit Unions 1939-2015



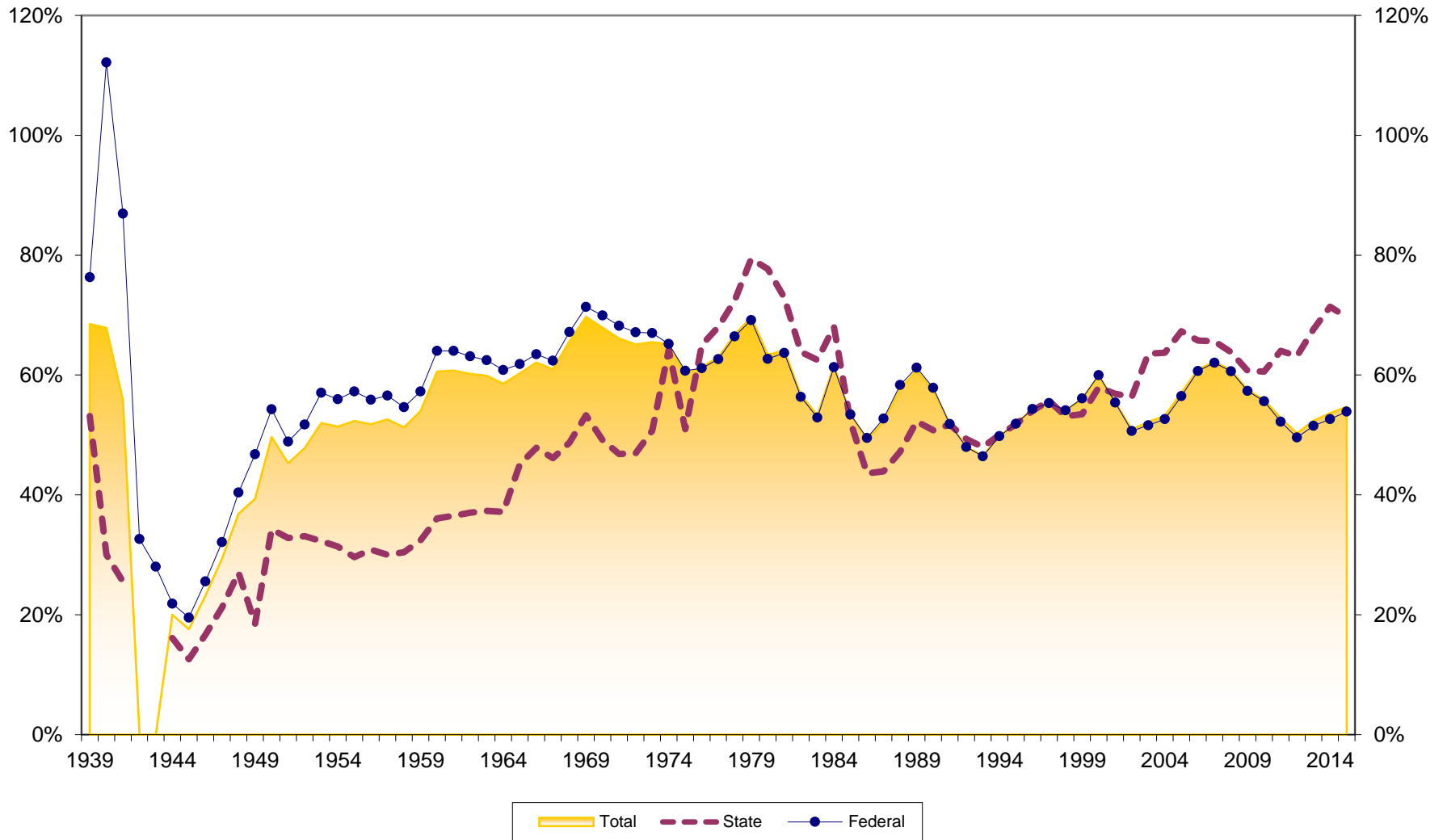
# Savings to Assets at New Jersey Credit Unions 1939-2015



# Reserves to Assets at New Jersey Credit Unions 1939-2015



# Loans to Assets at New Jersey Credit Unions 1939-2015



### Dollar Asset Growth at New Jersey Credit Unions (in \$Millions) 1940-2015

