

## Puerto Rico Totals Statistics

Year	# of CUs	# of Memberships	Savings (\$)	Loans (\$)	Reserves (\$)*	Assets (\$)
1939						
1940						
1941						
1942						
1943						
1944						
1945						
1946						
1947						
1948						
1949	40	6,730	324,937	314,786	11,351	379,625
1950	57	9,449	674,431	709,792	16,386	847,269
1951	70	19,464	1,166,498	1,219,771	21,836	1,361,408
1952	86	25,560	1,955,682	2,204,684	36,631	2,478,177
1953	98	31,865	3,008,926	3,244,372	67,316	3,706,506
1954	100	40,230	4,551,074	4,923,930	101,450	5,574,724
1955	132	45,366	5,711,278	6,556,047	157,032	6,960,754
1956	152	53,395	8,010,991	8,866,024	386,147	9,877,190
1957	182	61,793	9,886,983	11,150,825	410,665	12,563,897
1958	198	71,364	12,709,340	14,123,089	443,811	15,946,092
1959	213	79,345	16,312,760	16,809,873	499,081	19,074,082
1960	233	83,316	19,532,771	20,040,302	614,243	22,130,496
1961	257	94,658	21,215,972	25,117,433	982,312	27,876,092
1962	294	103,516	24,669,905	27,128,640	917,066	30,819,020
1963	317	113,803	32,792,374	33,444,664	1,294,469	38,049,702
1964	354	117,175	39,383,817	40,573,888	1,490,921	46,231,627
1965	367	121,781	46,423,847	48,314,766	2,344,108	54,866,810
1966	390	131,983	55,611,000	58,195,000	2,834,990	65,827,000
1967	373	132,566	65,100,209	66,461,051	3,551,164	77,196,663
1968	420	160,673	78,513,000	78,731,000	3,637,000	89,198,000
1969	476	172,452	97,482,000	103,343,000	5,087,000	117,346,000
1970	485	199,405	119,611,000	125,454,000	5,867,000	142,268,000
1971	457	217,375	139,967,055	147,286,906	6,851,026	166,725,927
1972	445	234,033	169,037,178	178,799,707	8,208,107	201,727,541
1973	440	247,640	194,124,583	208,686,823	9,610,021	234,490,021
1974	438	266,356	222,009,228	231,914,816	10,437,464	262,666,987
1975	381	277,388	255,798,547	248,573,175	10,697,692	298,411,790
1976	417	287,962	304,848,000	296,808,000	12,091,000	352,284,000
1977	404	312,172	354,287,000	341,885,000	12,913,000	404,552,000
1978	406	345,551	402,093,000	381,388,000	15,055,000	453,106,000
1979	384	380,920	467,738,378	445,137,332	17,054,390	526,716,050
1980	376	414,028	538,292,450	511,161,227	19,321,904	608,834,950
1981	350	479,878	602,386,457	567,307,335	22,710,571	689,122,279
1982	351	465,413	663,266,437	599,051,166	25,615,194	754,009,891
1983	328	480,732	730,204,778	609,337,424	27,006,686	820,087,272
1984	306	491,548	818,800,610	668,580,422	28,981,863	922,842,811
1985	297	537,162	948,670,296	778,525,359	31,094,084	1,074,260,964
1986	291	559,310	1,134,756,521	919,627,127	34,349,189	1,266,668,864
1987	288	608,995	1,381,816,805	1,095,250,568	39,522,133	1,550,475,707
1988	279	651,265	1,629,333,118	1,331,898,474	53,115,546	1,913,872,729
1989	276	697,592	1,829,115,035	1,519,276,528	56,371,737	2,173,591,294
1990	282	757,849	2,200,001,393	1,718,119,814	187,147,921	2,369,452,851
1991	283	823,720	2,513,076,070	1,848,297,054	89,339,386	2,710,954,720
1992	269	798,094	2,760,286,009	1,909,608,551	322,321,751	2,901,072,071
1993	270	851,054	3,105,005,871	2,110,526,549	357,049,612	3,242,140,984
1994	250	835,756	3,081,586,267	2,155,311,800	127,767,680	3,286,577,555
1995	245	868,705	3,263,355,408	2,312,362,264	134,254,922	3,505,999,281
1996	217	922,811	3,666,753,511	2,640,795,520	149,363,219	3,894,419,308
1997	202	932,862	3,924,983,761	2,963,988,000	162,863,716	4,187,522,713
1998	190	962,719	4,478,721,321	3,090,393,800	181,876,991	4,739,092,826
1999	177	940,607	4,509,236,534	3,267,684,398	186,293,069	4,809,808,777
2000	171	944,342	4,606,126,858	3,440,389,812	223,045,755	4,933,970,545
2001	172	939,393	5,160,804,307	3,577,512,664	261,170,155	5,497,351,711
2002	166	948,110	5,594,515,730	3,723,710,226	297,605,134	5,971,854,784
2003	164	941,322	6,134,424,632	3,844,395,485	339,007,614	6,559,588,587
2004	160	937,016	6,404,893,051	3,992,034,022	378,296,334	6,870,386,526
2005	157	932,368	6,331,618,586	4,181,847,114	407,814,886	6,840,278,235
2006	149	921,428	6,240,849,316	4,377,622,461	428,108,273	6,795,609,223
2007	148	916,449	6,466,333,815	4,520,233,430	449,305,421	7,019,245,117
2008	141	912,143	6,679,742,702	4,633,930,251	463,279,619	7,266,543,709
2009	140	929,280	7,211,173,224	4,695,260,757	438,114,072	7,757,746,472
2010	136	946,439	7,568,714,468	4,749,705,312	450,059,819	8,136,752,459
2011	133	969,104	7,928,717,880	4,722,164,593	476,059,255	8,524,492,626
2012	132	999,097	8,285,557,976	4,735,876,692	491,450,919	8,902,881,739
2013	132	1,020,576	8,592,563,544	4,849,426,040	373,774,754	9,075,791,914
2014	132	1,041,387	8,790,344,043	5,031,513,286	432,549,015	9,334,893,585
2015	132	1,070,037	8,829,470,430	5,064,898,679	435,420,098	9,381,469,021
2016	126	1,064,049	653,384,524	453,118,099	88,712,683	9,316,255,016

\* Beginning 1990, Reserves includes undivided earnings.

## Puerto Rico State Statistics

Year	# of CUs	# of Memberships	Savings (\$)	Loans (\$)	Reserves (\$)*	Assets (\$)
1939						
1940						
1941						
1942						
1943						
1944						
1945						
1946						
1947						
1948						
1949	40	6,730	324,937	314,786	11,351	379,625
1950	51	8,616	631,371	668,099	15,939	799,743
1951	59	16,666	972,926	1,019,057	19,062	1,148,662
1952	72	20,170	1,535,685	1,787,606	28,222	2,007,060
1953	82	25,908	2,320,431	2,555,828	50,846	2,931,470
1954	85	33,181	3,423,157	3,861,774	71,323	4,347,765
1955	109	37,455	4,279,000	5,110,800	113,600	5,360,000
1956	126	44,600	6,169,000	7,120,265	325,200	7,791,500
1957	158	52,000	7,951,464	9,007,821	338,484	10,034,976
1958	173	58,300	9,867,047	11,559,000	317,487	12,766,000
1959	183	65,354	13,024,872	13,765,976	338,024	15,303,521
1960	199	68,450	16,047,367	16,410,006	428,935	17,900,000
1961	222	78,075	16,846,925	20,700,000	733,114	22,750,000
1962	255	85,500	19,300,000	21,860,000	598,900	24,570,000
1963	275	94,206	26,423,786	27,422,498	891,132	30,714,236
1964	316	97,282	31,908,817	33,393,888	1,016,921	37,667,627
1965	329	101,100	37,598,847	39,723,766	1,727,108	44,738,810
1966	351	110,000	45,932,000	48,522,000	2,089,990	54,654,000
1967	333	109,175	54,126,209	55,524,051	2,624,164	64,528,663
1968	380	135,867	65,900,000	66,200,000	2,500,000	74,600,000
1969	436	146,366	83,253,000	89,198,000	3,790,000	100,687,000
1970	448	172,785	103,045,000	109,289,000	4,384,000	122,934,000
1971	420	192,154	120,935,055	128,518,906	5,229,026	144,529,927
1972	409	206,756	145,800,178	156,594,707	6,270,107	174,992,541
1973	404	220,135	168,243,583	184,126,823	7,346,021	204,369,021
1974	401	236,478	191,497,228	203,077,816	7,856,464	227,674,987
1975	347	248,003	221,583,842	219,018,087	8,027,692	259,587,096
1976	381	257,222	264,654,000	261,818,000	9,123,000	306,903,000
1977	369	280,807	305,793,000	300,580,000	9,838,000	350,457,000
1978	371	306,303	345,545,000	331,673,000	11,988,000	390,338,000
1979	347	344,330	406,514,378	390,418,332	13,857,390	458,521,050
1980	340	378,953	473,397,450	452,887,227	15,963,904	536,499,950
1981	315	444,000	533,241,457	504,265,335	19,027,571	611,307,279
1982	315	428,360	587,019,437	534,931,166	21,687,194	669,319,891
1983	292	443,750	646,980,778	542,799,424	22,910,686	728,127,272
1984	273	454,421	729,024,437	598,937,807	24,681,863	822,326,228
1985	264	499,421	843,764,038	702,994,327	26,276,171	956,734,407
1986	259	519,765	1,008,845,631	831,377,563	28,000,000	1,125,598,563
1987	256	567,022	1,237,658,453	988,456,917	32,105,417	1,388,806,656
1988	247	609,183	1,476,102,186	1,215,527,930	39,878,868	1,741,398,394
1989	243	652,434	1,674,305,822	1,401,068,430	42,556,641	1,997,190,817
1990	249	713,841	2,037,593,079	1,598,633,205	166,682,064	2,183,758,432
1991	247	766,038	2,322,187,412	1,713,806,194	67,473,780	2,493,282,565
1992	238	750,801	2,566,814,852	1,764,064,827	297,801,111	2,680,372,898
1993	236	787,793	2,873,787,960	1,942,291,446	328,106,747	2,979,329,191
1994	219	772,968	2,858,695,653	1,984,611,201	93,844,070	3,027,228,060
1995	216	804,005	3,016,890,001	2,119,735,439	96,572,875	3,219,095,844
1996	192	855,345	3,390,370,337	2,426,788,132	107,171,090	3,572,369,667
1997	177	861,945	3,628,222,699	2,726,828,499	115,187,295	3,839,576,496
1998	167	889,900	4,155,648,648	2,837,444,055	130,817,974	4,360,599,118
1999	154	862,787	4,154,152,918	3,008,177,680	131,876,347	4,395,878,240
2000	148	866,599	4,233,499,777	3,161,494,992	164,406,666	4,496,264,206
2001	149	858,367	4,742,080,087	3,276,704,139	198,009,920	5,010,730,695
2002	143	863,644	5,135,336,246	3,407,332,672	228,017,158	5,438,980,745
2003	141	852,752	5,635,734,239	3,528,150,426	265,127,820	5,982,965,762
2004	137	845,769	5,895,505,066	3,683,149,849	298,899,768	6,277,784,800
2005	134	842,799	5,814,728,950	3,874,631,243	327,551,423	6,238,912,822
2006	130	836,209	5,820,881,199	4,086,772,581	345,819,582	6,289,582,661
2007	129	827,135	6,029,418,275	4,187,758,158	363,808,105	6,488,777,924
2008	123	822,475	6,206,074,811	4,286,458,628	374,616,585	6,699,435,130
2009	122	840,830	6,713,509,246	4,333,518,362	348,783,896	7,166,638,044
2010	119	858,933	7,053,583,034	4,371,226,494	359,468,529	7,524,187,096
2011	116	881,297	7,392,099,806	4,327,962,183	380,493,551	7,886,734,384
2012	115	910,647	7,707,038,598	4,345,176,721	390,297,535	8,218,124,437
2013	115	930,441	7,974,580,912	4,429,806,635	272,051,472	8,349,184,823
2014	115	947,528	8,127,270,751	4,573,673,086	326,037,358	8,557,566,288
2015	116	972,453	8,127,270,751	4,573,673,086	326,037,358	8,563,080,410
2016	116	981,545	0	0	0	8,566,957,917

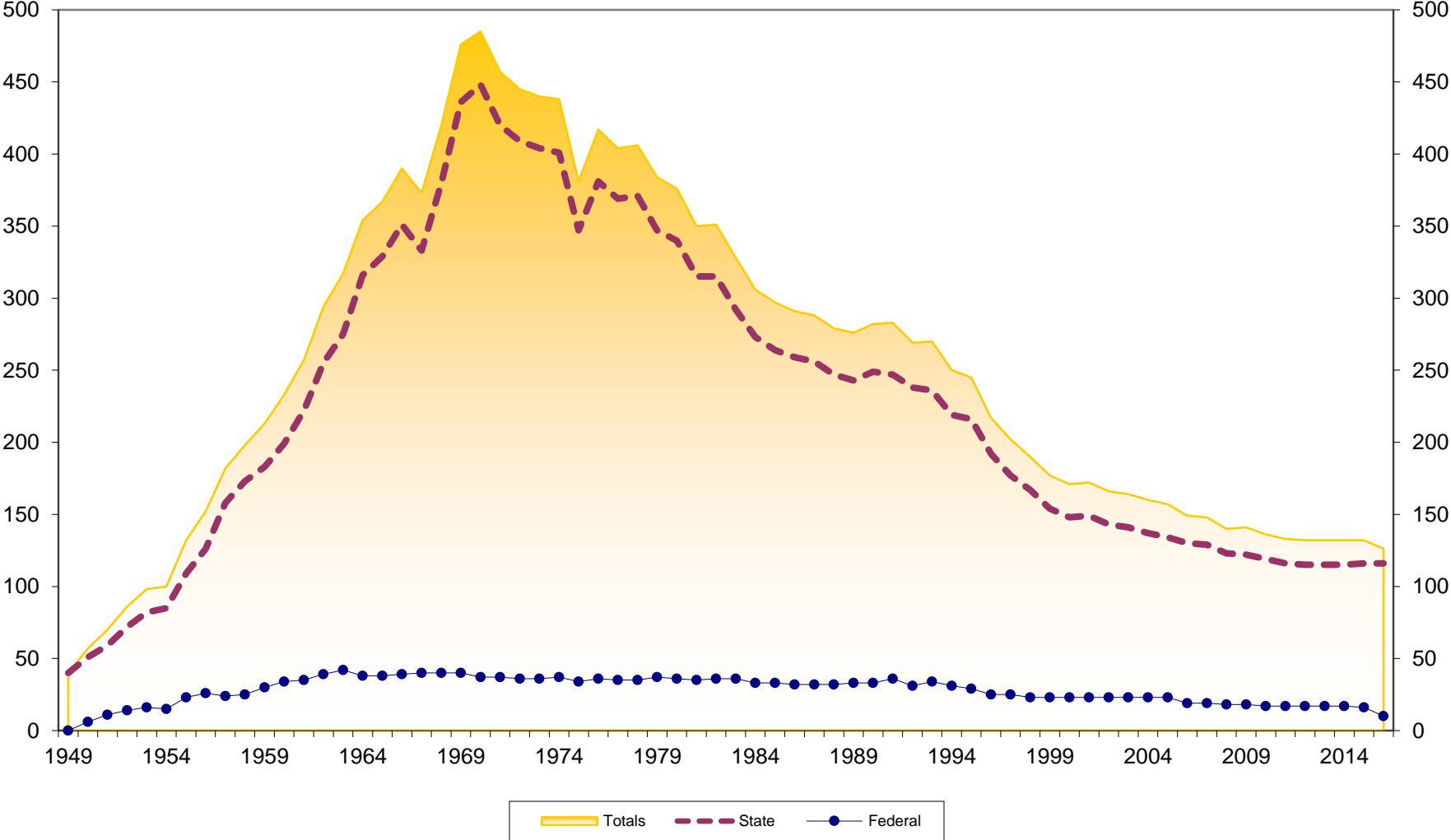
\* Beginning 1990, Reserves includes undivided earnings.

## Puerto Rico Federal Statistics

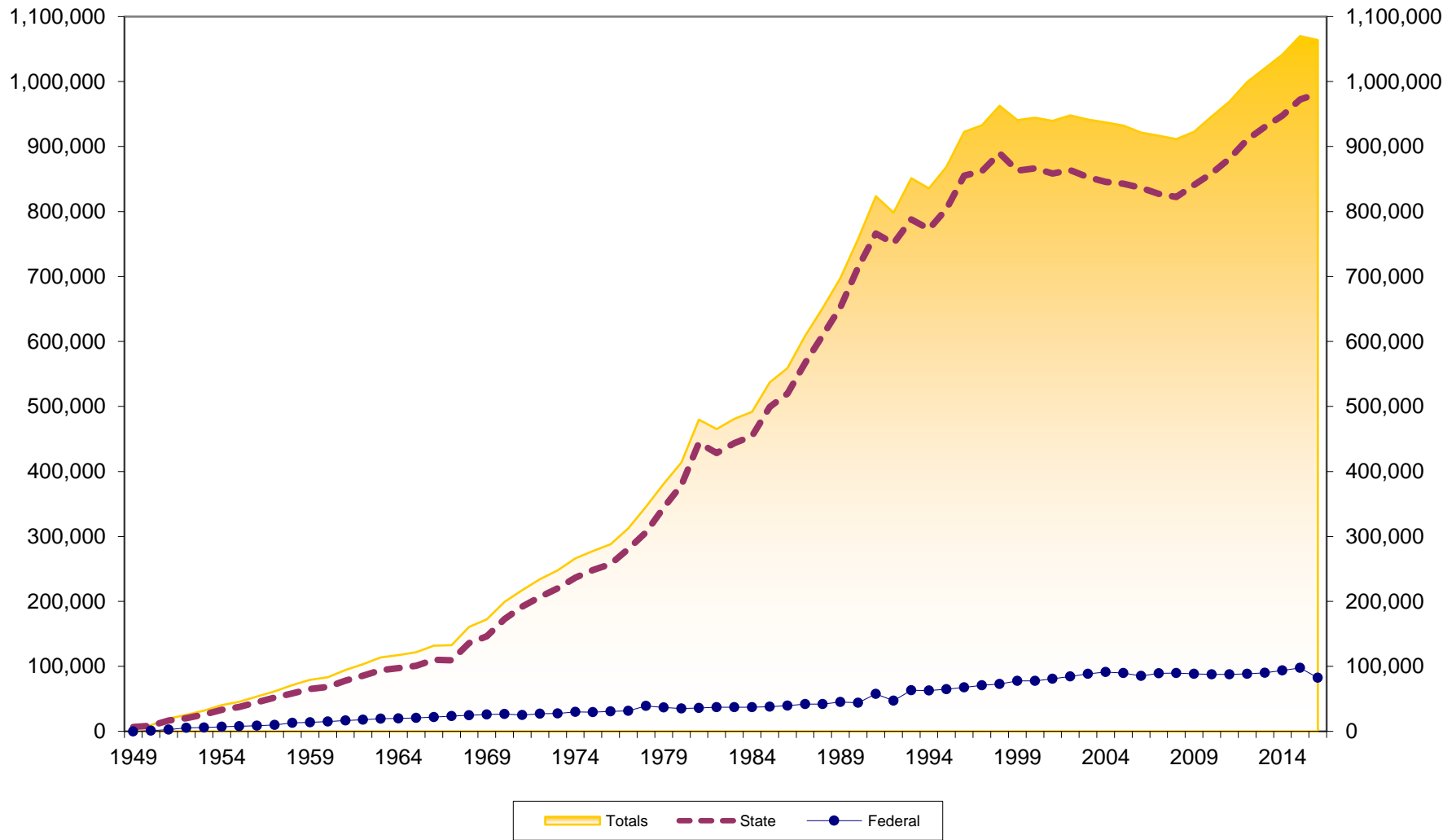
Year	# of CUs	# of Memberships	Savings (\$)	Loans (\$)	Reserves (\$)*	Assets (\$)
1939						
1940						
1941						
1942						
1943						
1944						
1945						
1946						
1947						
1948						
1949						
1950	6	833	43,060	41,693	447	47,526
1951	11	2,798	193,572	200,714	2,774	212,746
1952	14	5,390	419,997	417,078	8,409	471,117
1953	16	5,957	688,495	688,544	16,470	775,036
1954	15	7,049	1,127,917	1,062,156	30,127	1,226,959
1955	23	7,911	1,432,278	1,445,247	43,432	1,600,754
1956	26	8,795	1,841,991	1,745,759	60,947	2,085,690
1957	24	9,793	1,935,519	2,143,004	72,181	2,528,921
1958	25	13,064	2,842,293	2,564,089	126,324	3,180,092
1959	30	13,991	3,287,888	3,043,897	161,057	3,770,561
1960	34	14,866	3,485,404	3,630,296	185,308	4,230,496
1961	35	16,583	4,369,047	4,417,433	249,198	5,126,092
1962	39	18,016	5,369,905	5,268,640	318,166	6,249,020
1963	42	19,597	6,368,588	6,022,166	403,337	7,335,466
1964	38	19,893	7,475,000	7,180,000	474,000	8,564,000
1965	38	20,681	8,825,000	8,591,000	617,000	10,128,000
1966	39	21,983	9,679,000	9,673,000	745,000	11,173,000
1967	40	23,391	10,974,000	10,937,000	927,000	12,668,000
1968	40	24,806	12,613,000	12,531,000	1,137,000	14,598,000
1969	40	26,086	14,229,000	14,145,000	1,297,000	16,659,000
1970	37	26,620	16,566,000	16,165,000	1,483,000	19,334,000
1971	37	25,221	19,032,000	18,768,000	1,622,000	22,196,000
1972	36	27,277	23,237,000	22,205,000	1,938,000	26,735,000
1973	36	27,505	25,881,000	24,560,000	2,264,000	30,121,000
1974	37	29,878	30,512,000	28,837,000	2,581,000	34,992,000
1975	34	29,385	34,214,705	29,555,088	2,670,000	38,824,694
1976	36	30,740	40,194,000	34,990,000	2,968,000	45,381,000
1977	35	31,365	48,494,000	41,305,000	3,075,000	54,095,000
1978	35	39,248	56,548,000	49,715,000	3,067,000	62,768,000
1979	37	36,590	61,224,000	54,719,000	3,197,000	68,195,000
1980	36	35,075	64,895,000	58,274,000	3,358,000	72,335,000
1981	35	35,878	69,145,000	63,042,000	3,683,000	77,815,000
1982	36	37,053	76,247,000	64,120,000	3,928,000	84,690,000
1983	36	36,982	83,224,000	66,538,000	4,096,000	91,960,000
1984	33	37,127	89,776,173	69,642,615	4,300,000	100,516,583
1985	33	37,741	104,906,258	75,531,032	4,817,913	117,526,557
1986	32	39,545	125,910,890	88,249,564	6,349,189	141,070,301
1987	32	41,973	144,158,352	106,793,651	7,416,716	161,669,051
1988	32	42,082	153,230,932	116,370,544	13,236,678	172,474,335
1989	33	45,158	154,809,213	118,208,098	13,815,096	176,400,477
1990	33	44,008	162,408,314	119,486,609	20,465,857	185,694,419
1991	36	57,682	190,888,658	134,490,860	21,865,606	217,672,155
1992	31	47,293	193,471,157	145,543,724	24,520,640	220,699,173
1993	34	63,261	231,217,911	168,235,103	28,942,865	262,811,793
1994	31	62,788	222,890,614	170,700,599	33,923,610	259,349,495
1995	29	64,700	246,465,407	192,626,825	37,682,047	286,903,437
1996	25	67,466	276,383,174	214,007,388	42,192,129	322,049,641
1997	25	70,917	296,761,062	237,159,501	47,676,421	347,946,217
1998	23	72,819	323,072,673	252,949,745	51,059,017	378,493,708
1999	23	77,820	355,083,616	259,506,718	54,416,722	413,930,537
2000	23	77,743	372,627,081	278,894,820	58,639,089	437,706,339
2001	23	81,026	418,724,220	300,808,525	63,160,235	486,621,016
2002	23	84,466	459,179,484	316,377,554	69,587,976	532,874,039
2003	23	88,570	498,690,393	316,245,059	73,879,794	576,622,825
2004	23	91,247	509,387,985	308,884,173	79,396,566	592,601,726
2005	23	89,569	516,889,636	307,215,871	80,263,463	601,365,413
2006	19	85,219	419,968,117	290,849,880	82,288,691	506,026,562
2007	19	89,314	436,915,540	332,475,272	85,497,316	530,467,193
2008	18	89,668	473,667,891	347,471,623	88,663,034	567,108,579
2009	18	88,450	497,663,978	361,742,395	89,330,176	591,108,428
2010	17	87,506	515,131,434	378,478,818	90,591,290	612,565,363
2011	17	87,807	536,618,074	394,202,410	95,565,704	637,758,242
2012	17	88,450	578,519,378	390,699,971	101,153,384	684,757,302
2013	17	90,135	617,982,632	419,619,405	101,723,282	726,607,091
2014	17	93,859	663,073,292	457,840,200	106,511,657	777,327,297
2015	16	97,584	702,199,679	491,225,593	109,382,740	818,388,611
2016	10	82,504	653,384,524	453,118,099	88,712,683	749,297,099

\* Beginning 1990, Reserves includes undivided earnings.

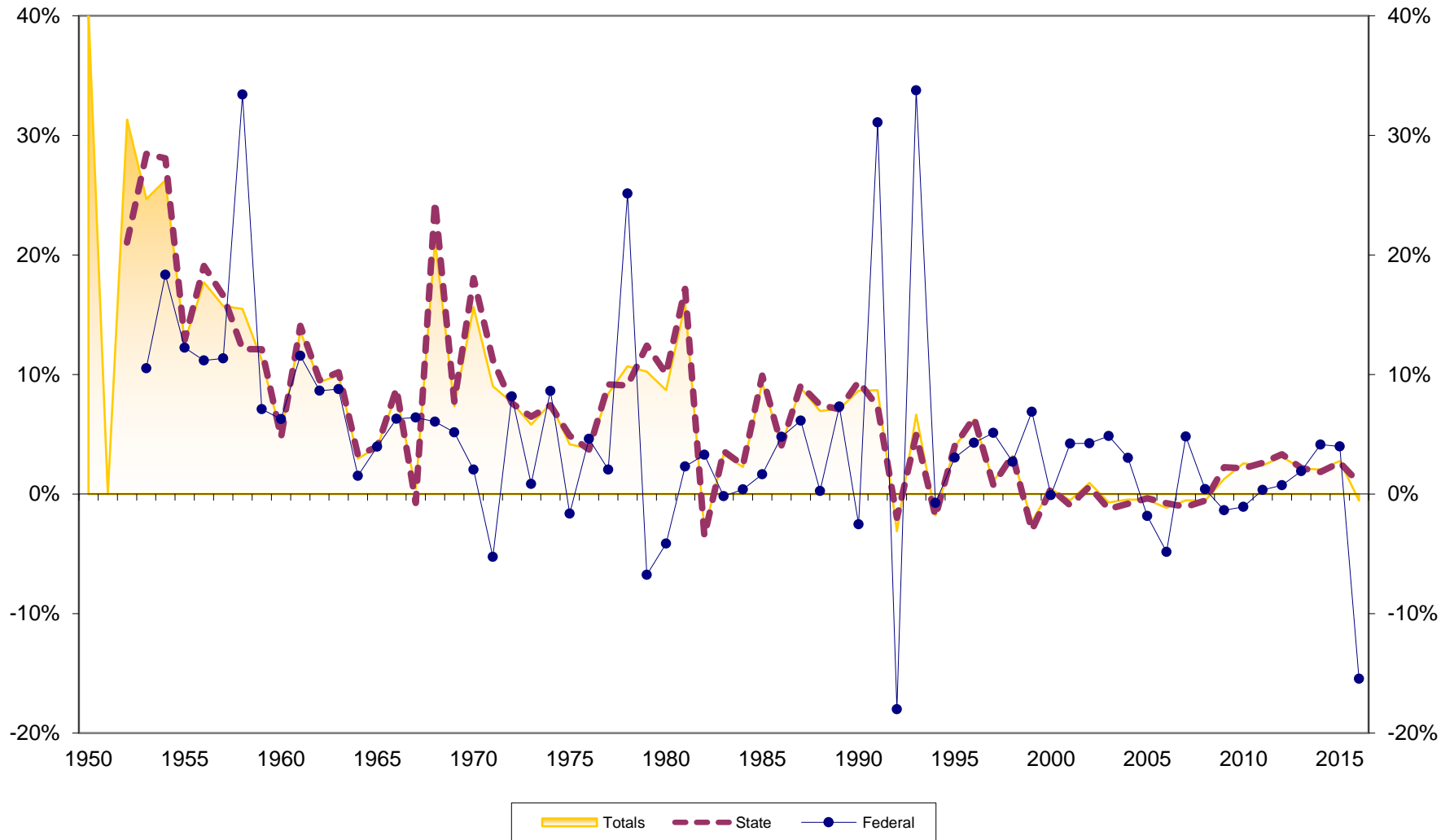
# Number of Puerto Rico Credit Unions 1949-2016



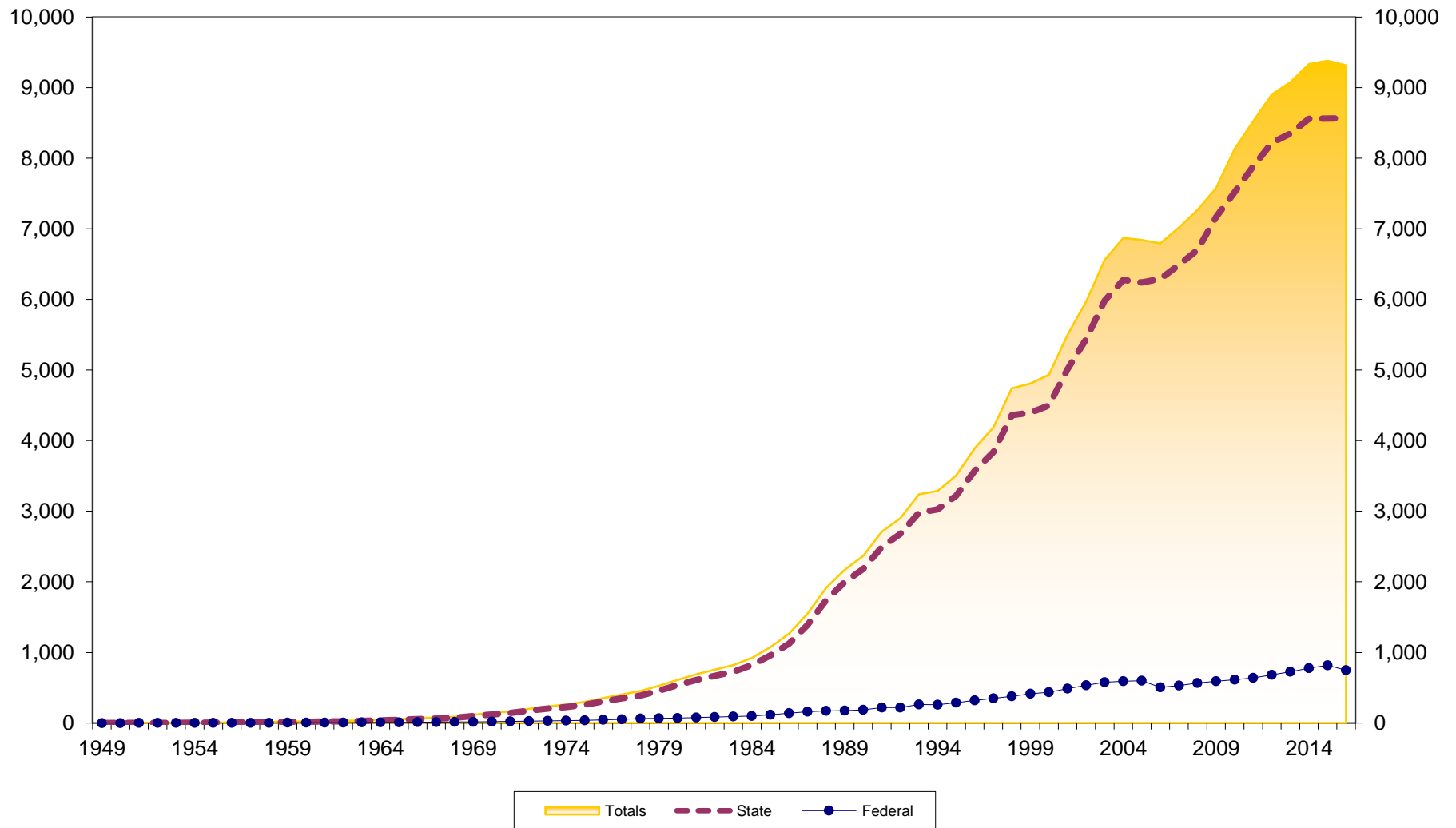
# Number of Memberships at Puerto Rico Credit Unions 1949-2016



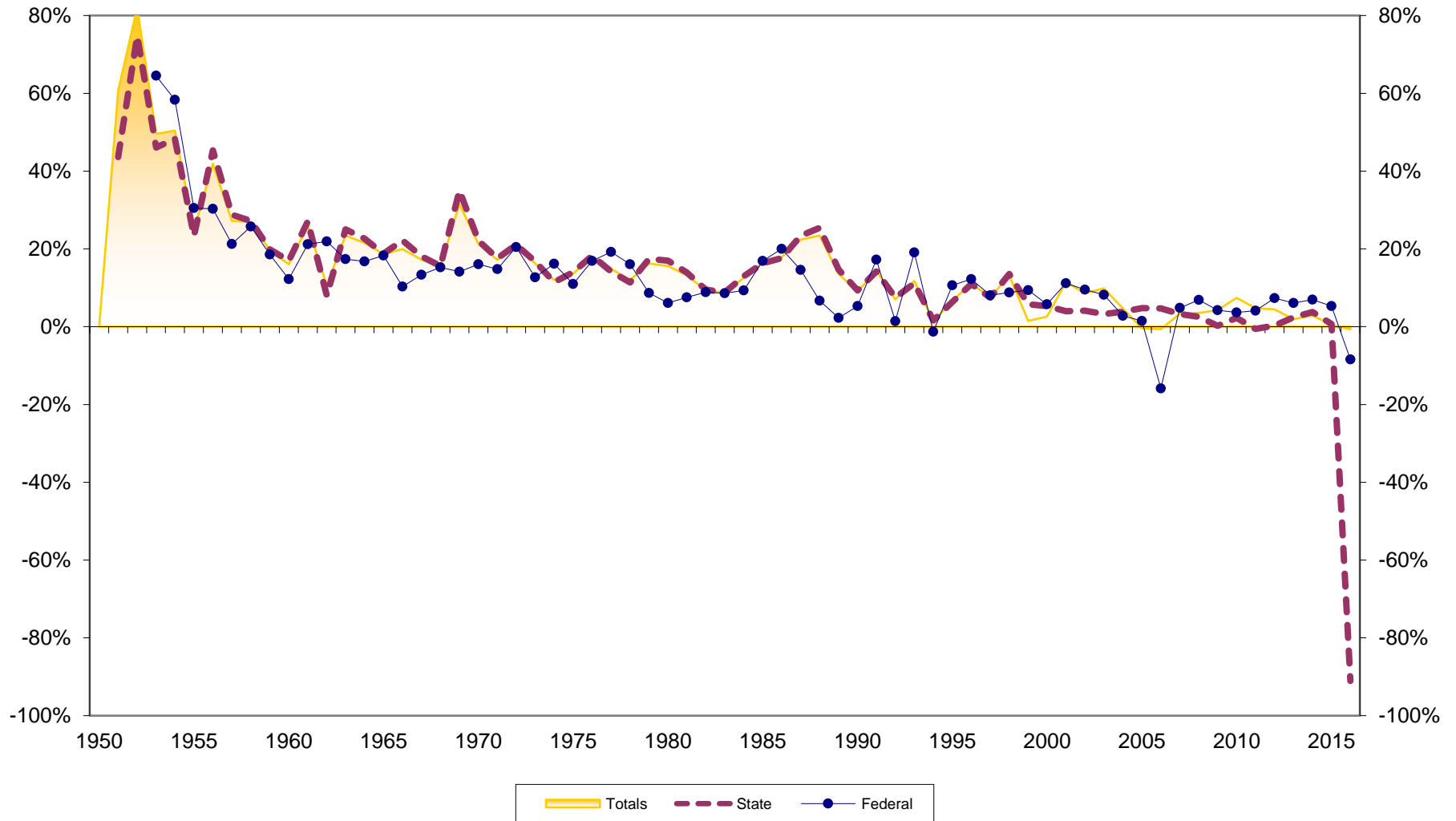
# Membership Growth at Puerto Rico Credit Unions 1950-2016



# Assets at Puerto Rico Credit Unions (in \$Millions) 1949-2016

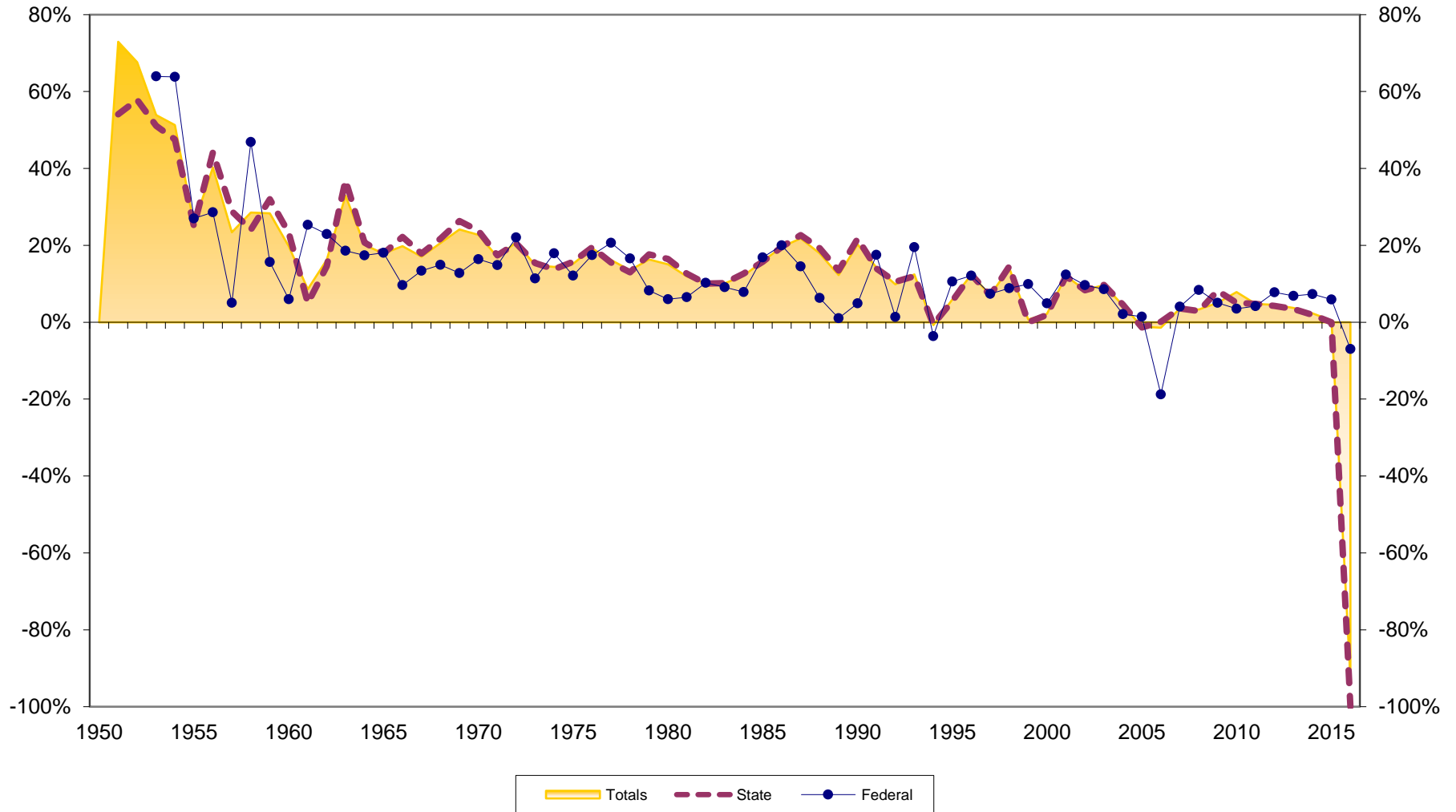


# Asset Growth at Puerto Rico Credit Unions 1950-2016

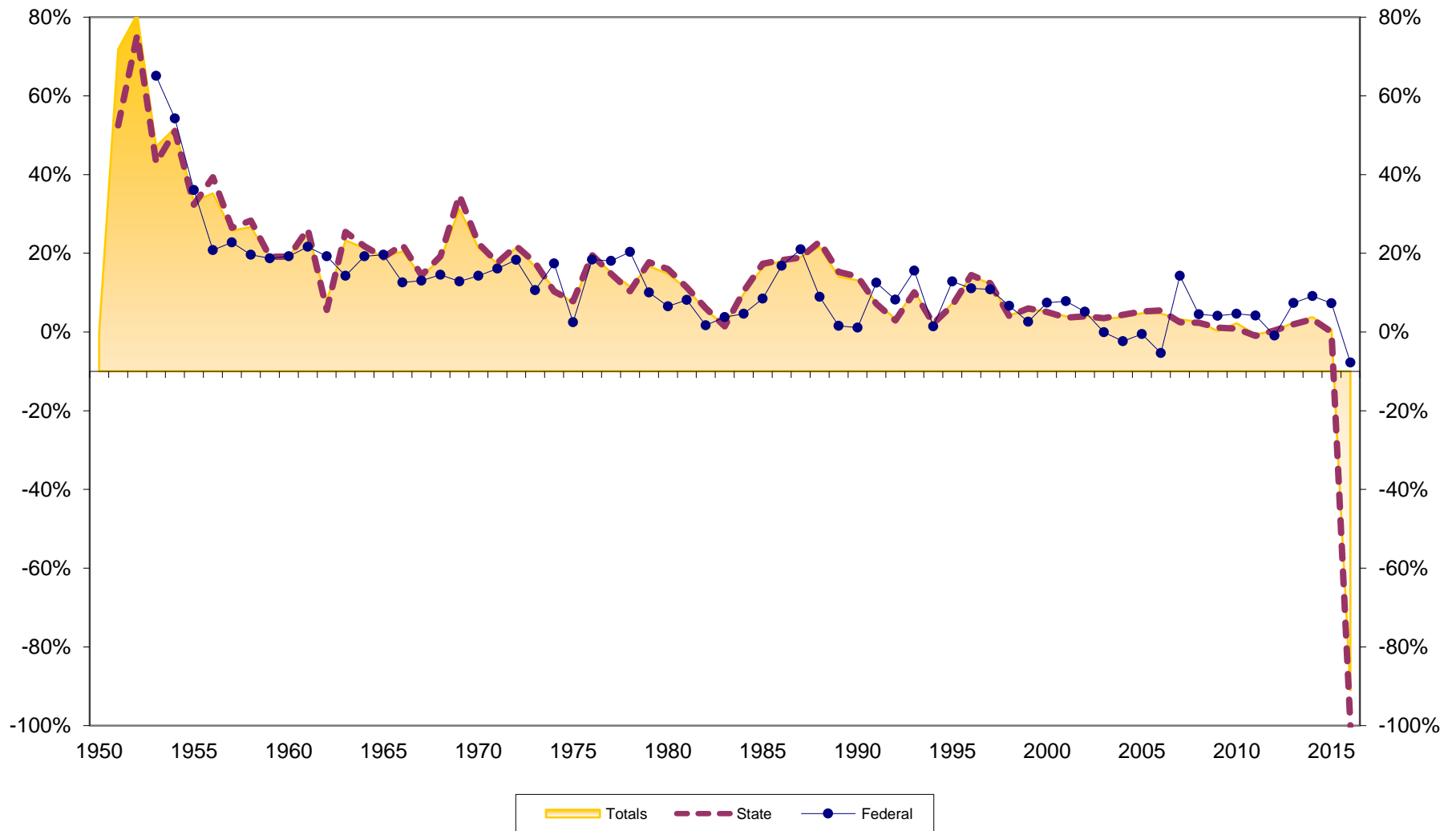




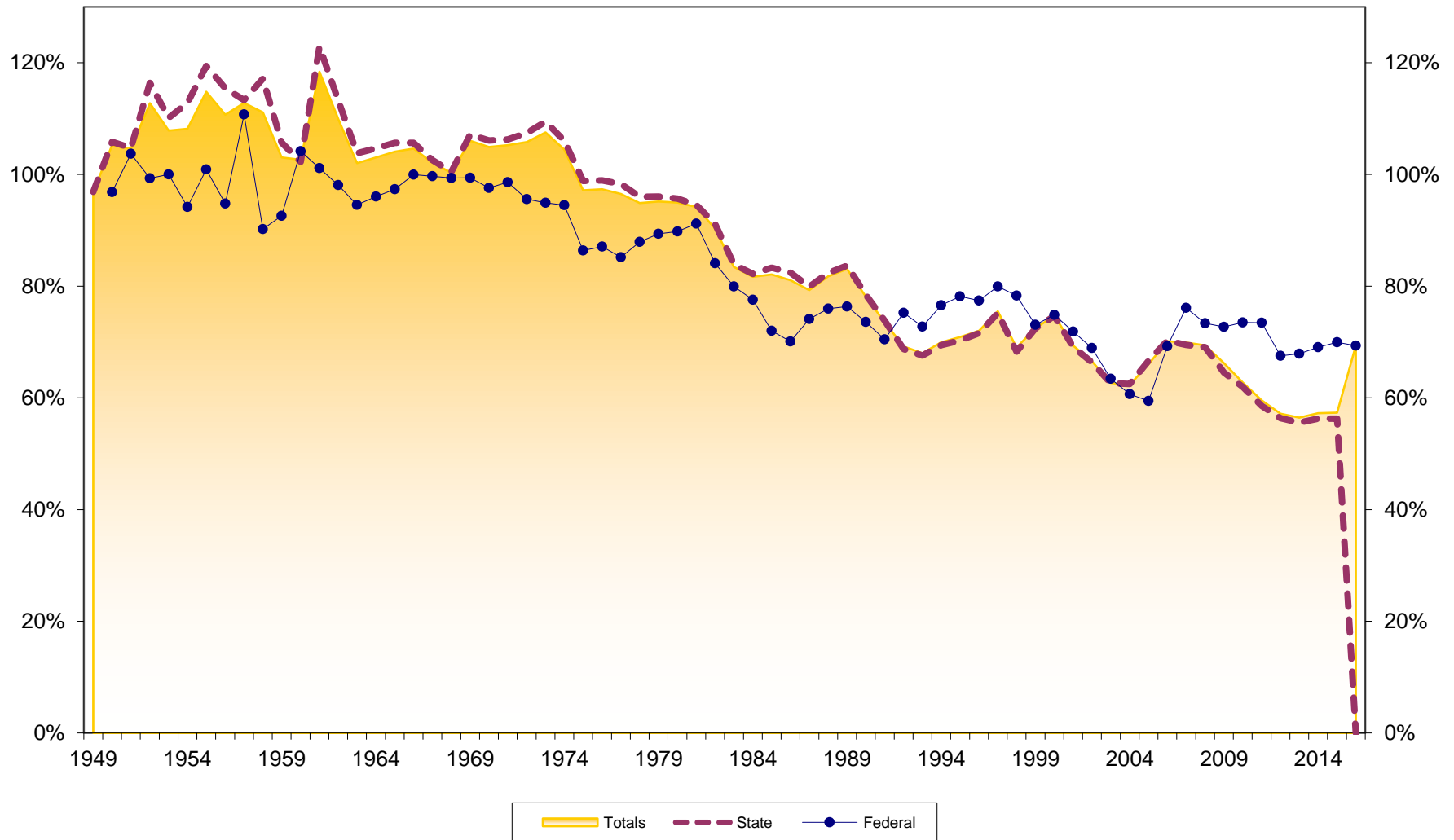
# Savings Growth at Puerto Rico Credit Unions 1950-2016



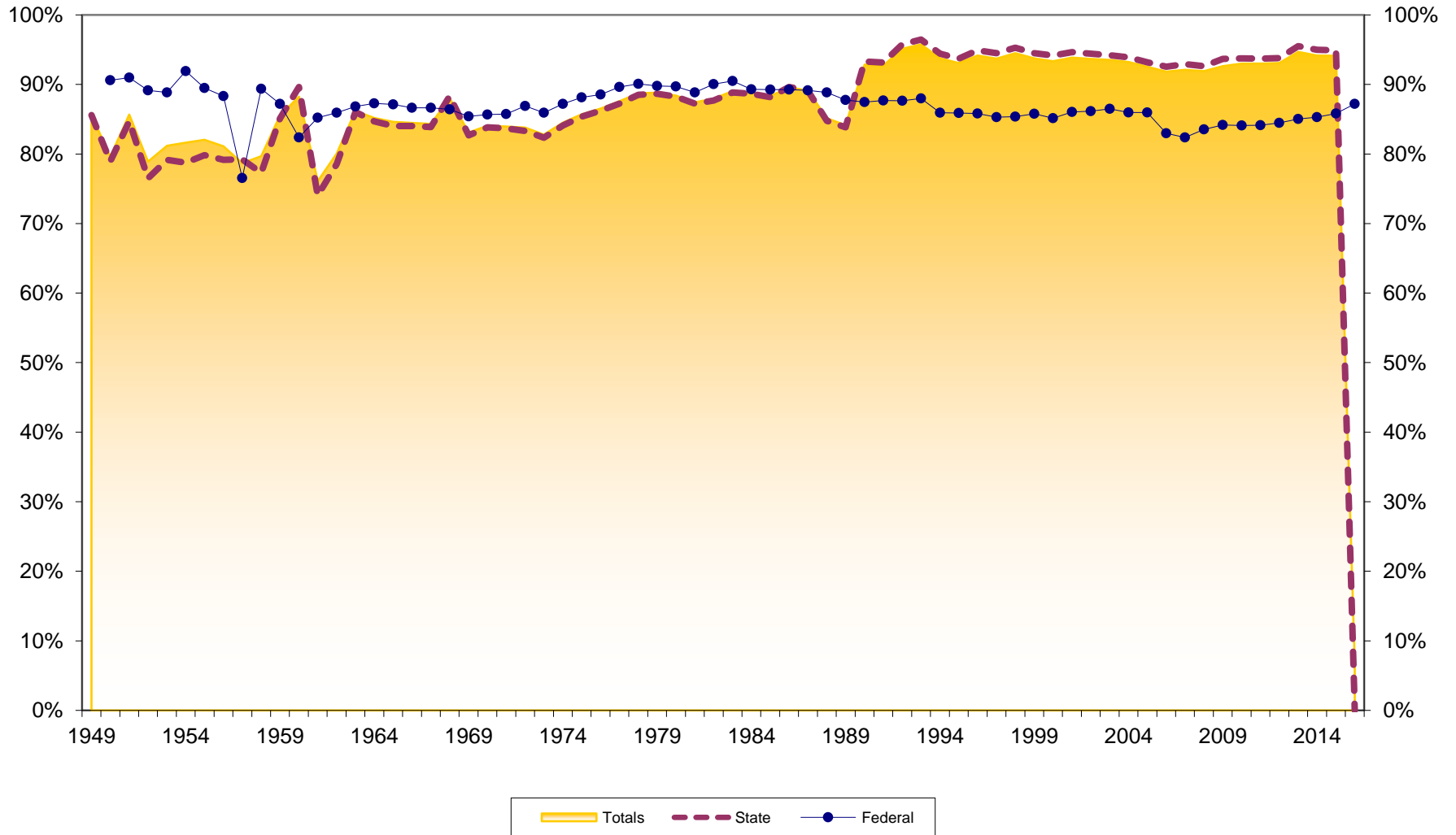
# Loan Growth at Puerto Rico Credit Unions 1950-2016



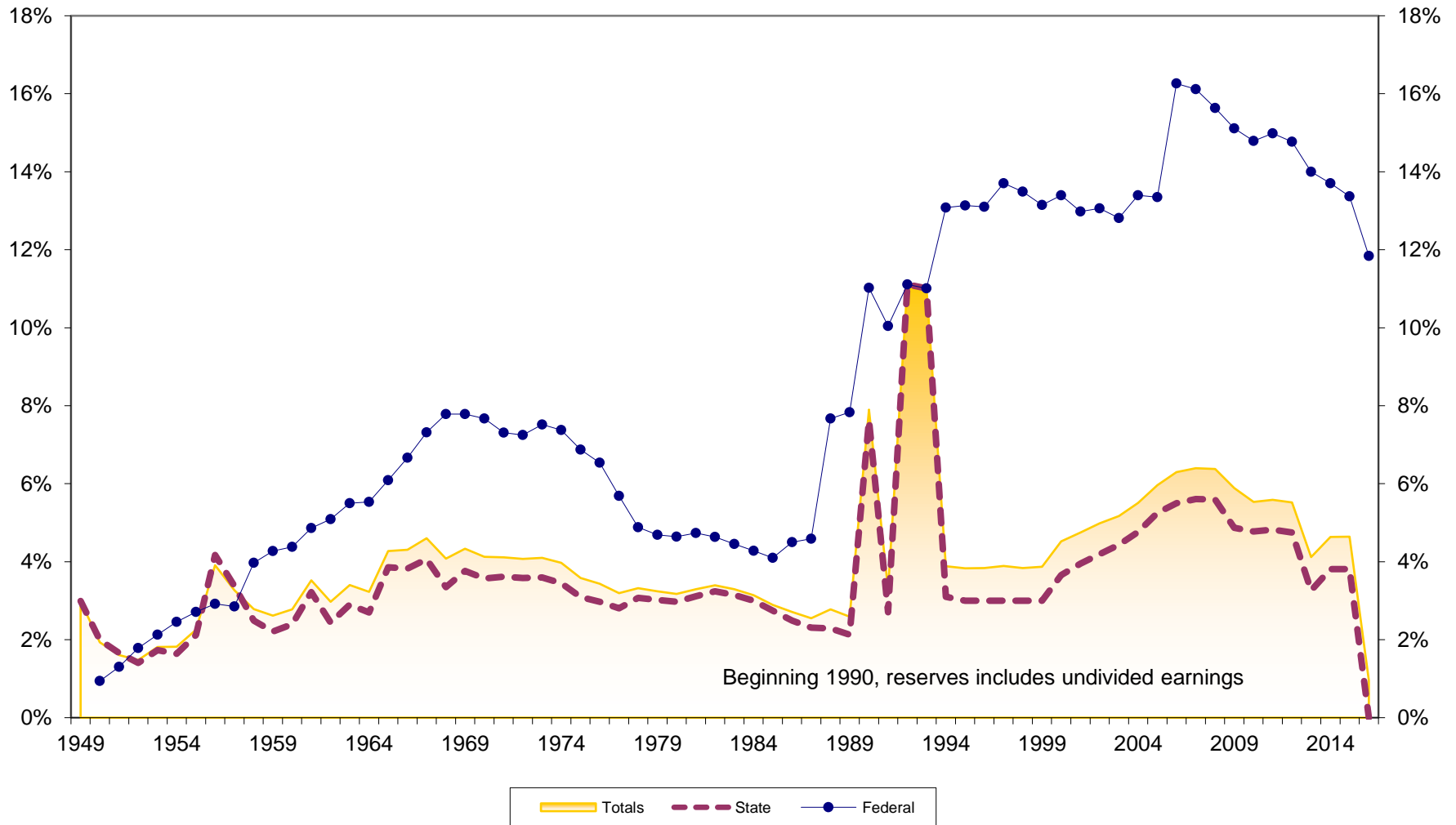
# Loans to Savings Ratio at Puerto Rico Credit Unions 1949-2016



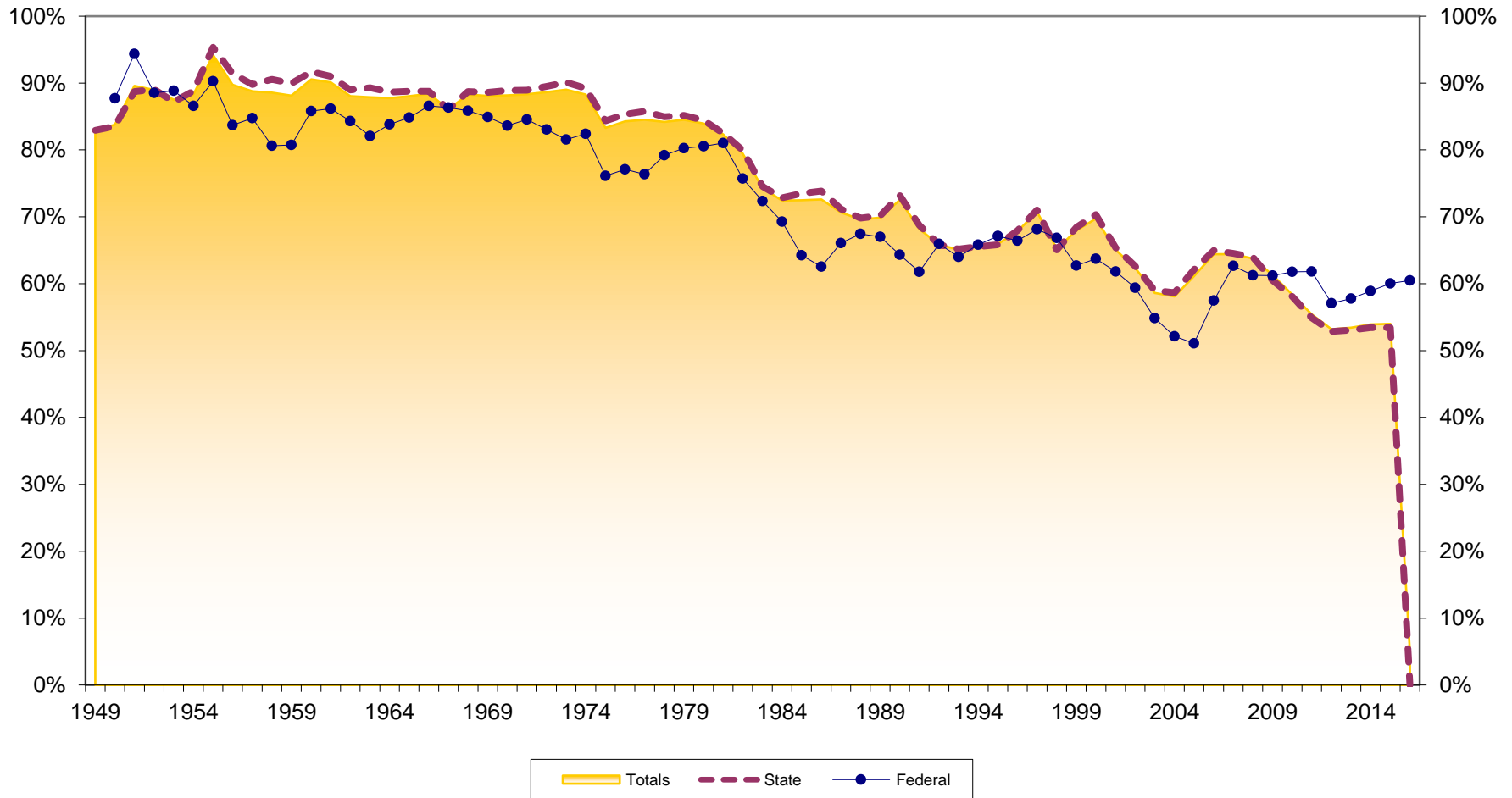
# Savings to Assets at Puerto Rico Credit Unions 1949-2016



# Reserves to Assets at Puerto Rico Credit Unions 1949-2016



# Loans to Assets at Puerto Rico Credit Unions 1949-2016



## Dollar Asset Growth at Puerto Rico Credit Unions (in \$Millions) 1950-2016

