

West Virginia Totals Statistics

Year	# of CUs	# of Memberships	Savings (\$)	Loans (\$)	Reserves (\$)*	Assets (\$)
1939	61	12,768	518,005	621,624	36,197	692,947
1940	71	17,029	724,997	816,835	0	932,177
1941	81	19,499	982,929	938,435	0	1,219,973
1942	75	17,151	650,648	605,213	26,238	714,458
1943	82	16,269	649,977	485,553	0	725,000
1944	67	15,857	1,009,311	452,937	129,608	1,201,774
1945	63	15,318	1,185,546	510,424	109,095	1,413,816
1946	59	15,918	1,369,679	770,275	0	1,659,293
1947	61	16,509	1,596,520	1,049,191	127,396	1,963,690
1948	66	16,997	1,885,159	1,458,189	181,490	2,376,573
1949	67	17,917	2,150,698	1,719,997	149,844	2,721,823
1950	74	19,843	2,463,806	2,361,855	182,914	3,150,011
1951	73	20,926	2,813,607	2,446,329	232,358	3,532,511
1952	80	21,646	3,382,166	2,993,686	190,259	4,214,945
1953	82	24,517	4,195,612	3,859,839	231,820	5,206,683
1954	82	25,303	4,921,676	4,218,016	263,676	6,052,966
1955	92	28,484	6,192,332	5,569,297	299,602	7,551,542
1956	90	31,908	7,654,082	6,868,877	399,988	9,181,579
1957	93	33,674	9,118,140	8,306,713	468,775	10,930,514
1958	106	36,223	10,559,585	9,116,302	589,122	12,588,024
1959	114	40,778	13,339,293	11,085,450	850,717	15,197,331
1960	125	44,823	15,350,170	13,516,056	1,053,929	17,711,932
1961	137	48,875	17,740,567	15,858,009	1,155,146	20,524,045
1962	147	52,401	19,776,218	17,577,650	1,387,380	23,063,671
1963	150	55,881	22,477,308	20,889,119	2,133,654	26,909,617
1964	156	60,911	27,340,373	24,480,991	2,051,878	31,908,832
1965	167	66,876	32,131,366	29,047,436	2,409,319	37,396,729
1966	181	73,052	36,887,841	33,810,371	2,874,386	43,107,800
1967	189	76,892	41,231,755	36,830,226	3,513,190	48,273,734
1968	197	80,583	46,615,145	42,279,773	4,038,390	54,354,842
1969	202	86,964	52,251,328	50,407,585	4,680,960	61,367,793
1970	204	92,351	59,181,667	56,127,518	5,382,218	69,154,723
1971	195	97,670	71,070,968	64,105,585	6,006,931	82,437,115
1972	199	101,834	82,946,445	73,190,677	6,503,810	95,392,546
1973	196	108,142	94,160,565	87,362,893	7,283,093	108,415,381
1974	201	117,411	110,376,035	97,433,325	8,372,259	126,469,000
1975	198	122,464	128,206,150	111,121,673	9,370,088	146,552,654
1976	205	133,869	151,342,625	138,675,130	10,712,845	174,766,381
1977	219	147,477	177,926,020	167,885,645	11,481,828	203,795,780
1978	223	165,921	207,320,139	200,815,904	12,527,146	237,031,566
1979	226	162,692	216,763,392	210,053,642	14,228,999	252,815,934
1980	221	182,382	245,308,209	196,744,099	15,784,138	274,218,401
1981	221	196,137	251,277,557	216,582,860	18,261,440	305,067,418
1982	208	243,505	318,333,755	216,247,248	19,670,008	355,382,157
1983	197	210,375	362,634,731	234,612,961	20,272,438	403,662,543
1984	193	212,225	400,103,176	293,378,787	23,097,813	444,651,158
1985	188	220,189	472,476,110	320,994,226	26,808,247	520,625,813
1986	184	231,773	605,943,939	349,178,015	29,823,521	660,008,937
1987	174	240,342	654,416,397	401,487,456	32,262,625	714,523,280
1988	168	247,376	690,147,808	463,050,215	41,199,969	756,936,597
1989	164	251,825	715,210,432	499,164,559	40,280,723	790,555,634
1990	156	250,575	771,629,365	509,649,329	73,061,491	854,392,836
1991	155	260,390	857,933,342	524,438,733	81,460,396	948,200,636
1992	154	268,980	997,405,428	580,662,795	91,774,332	1,097,034,106
1993	150	277,060	1,071,151,279	653,846,943	106,224,924	1,185,926,660
1994	147	288,779	1,100,631,820	770,579,523	118,993,385	1,240,161,721
1995	141	308,400	1,136,001,166	828,758,466	135,422,613	1,283,113,665
1996	138	310,594	1,193,156,165	917,223,771	151,723,753	1,357,654,334
1997	137	319,549	1,232,254,624	963,775,497	167,803,449	1,411,521,799
1998	137	326,204	1,321,849,695	992,940,806	183,148,718	1,515,636,985
1999	135	343,904	1,393,386,951	1,066,844,637	201,356,507	1,607,417,262
2000	132	354,146	1,423,215,851	1,144,645,221	216,919,206	1,665,064,694
2001	127	369,006	1,598,715,093	1,168,600,104	231,446,438	1,852,797,122
2002	124	378,941	1,738,231,843	1,253,529,312	249,346,281	2,016,286,073
2003	121	390,306	1,849,817,778	1,320,162,038	265,560,108	2,142,994,743
2004	119	399,490	1,881,933,542	1,381,604,428	273,648,239	2,195,184,190
2005	114	399,440	1,859,034,054	1,397,370,746	285,212,637	2,185,419,159
2006	113	397,564	1,880,581,241	1,407,352,275	295,671,669	2,213,604,175
2007	112	398,926	1,947,150,433	1,434,520,304	311,574,098	2,294,869,934
2008	109	395,603	2,029,923,565	1,476,977,824	324,939,338	2,391,440,091
2009	108	392,120	2,262,726,666	1,535,005,425	330,500,711	2,663,138,729
2010	106	389,649	2,408,711,228	1,519,340,540	340,225,985	2,770,680,177
2011	104	388,166	2,595,674,650	1,561,983,142	351,084,429	2,967,151,594
2012	97	384,021	2,747,839,154	1,655,799,400	363,406,795	3,130,373,909
2013	94	381,777	2,807,352,709	1,769,084,558	377,000,706	3,214,171,367
2014	90	382,738	2,897,609,376	1,871,357,406	393,223,459	3,333,363,142
2015	90	381,002	2,973,175,233	1,961,118,218	407,571,665	3,437,360,138
2016	88	380,849	3,032,740,126	2,041,483,373	420,234,364	3,505,239,253

* Beginning 1990, Reserves includes undivided earnings.

West Virginia State Statistics

Year	# of CUs	# of Memberships	Savings (\$)	Loans (\$)	Reserves (\$)*	Assets (\$)
1939	29	5,928	322,791	447,451	29,022	476,404
1940	30	6,264	344,997	471,835		510,177
1941	32	6,192	371,481	479,435		552,973
1942	34	5,466		322,960		
1943	40	4,926		263,553		
1944	27	4,579	253,431	240,887	98,576	385,099
1945	23	4,308	265,992	278,028	76,990	423,668
1946	20	4,420	285,470	362,232		493,591
1947	22	4,758	302,712	429,414	87,214	568,229
1948	27	5,312	349,352	583,327	128,107	699,133
1949	25	5,346	392,494	558,679	83,844	784,639
1950	27	5,808	443,607	740,405	96,407	880,647
1951	26	6,197	461,496	771,079	117,138	894,107
1952	30	6,451	543,901	903,133	61,841	1,030,043
1953	27	6,398	687,031	1,059,344	64,495	1,227,385
1954	26	6,747	876,216	1,214,213	66,866	1,504,823
1955	25	6,999	1,159,798	1,611,283	71,064	1,869,561
1956	23	7,519	1,461,285	1,904,342	87,982	2,215,192
1957	23	7,783	1,696,909	2,225,583	91,081	2,551,626
1958	23	7,918	2,044,610	2,518,411	107,524	2,965,164
1959	23	8,186	2,728,973	2,752,008	244,432	3,201,981
1960	24	8,561	2,869,031	3,055,589	265,209	3,448,459
1961	24	8,616	3,205,616	3,327,344	156,252	3,808,999
1962	24	8,483	3,454,232	3,420,113	176,232	4,086,165
1963	21	8,309	3,739,373	3,878,783	199,406	4,461,703
1964	25	9,061	4,081,373	4,321,991	239,878	4,933,832
1965	27	9,652	4,538,366	4,806,436	280,319	5,507,729
1966	31	10,299	5,039,841	5,252,371	327,386	6,083,800
1967	35	10,079	5,478,755	5,745,226	518,190	6,661,734
1968	36	10,403	5,903,145	6,271,773	593,390	7,258,842
1969	35	11,545	6,618,328	7,123,585	679,960	8,111,793
1970	34	12,105	7,770,667	7,911,518	784,218	9,427,723
1971	32	13,452	10,187,968	9,235,585	933,931	12,238,115
1972	31	12,864	11,323,445	9,918,677	985,810	13,401,546
1973	29	12,659	11,925,565	12,409,893	1,054,093	14,097,381
1974	27	11,703	10,630,035	9,292,325	747,259	12,178,000
1975	23	11,582	11,902,150	10,298,673	721,088	13,409,654
1976	22	11,606	14,482,625	11,895,130	829,845	16,246,381
1977	25	12,911	15,550,020	13,649,645	758,828	17,244,780
1978	22	13,971	17,020,139	15,677,904	854,146	18,931,566
1979	23	14,778	16,379,392	17,438,642	941,999	20,887,934
1980	23	16,402	21,756,209	18,860,099	1,014,138	24,196,401
1981	26	17,216	16,296,557	23,101,860	1,108,440	28,217,418
1982	26	33,768	36,284,755	30,888,248	1,520,008	41,530,157
1983	26	31,364	38,834,731	34,212,961	1,882,438	46,462,543
1984	26	28,148	46,042,834	41,242,284	1,692,344	51,181,773
1985	26	28,441	50,130,425	41,727,490	2,080,916	53,738,014
1986	21	25,895	44,085,423	26,306,448	2,207,135	47,178,490
1987	19	26,031	48,365,752	31,678,821	2,194,185	51,633,565
1988	19	26,994	48,036,472	36,009,375	2,529,309	51,222,318
1989	18	27,321	48,939,404	39,493,412	2,349,719	53,165,254
1990	15	27,808	52,779,127	40,408,998	3,562,856	56,931,162
1991	15	28,527	58,006,446	43,741,598	4,481,763	62,962,454
1992	15	28,933	67,101,575	46,438,047	5,107,092	72,632,709
1993	13	28,784	73,834,347	52,546,838	6,090,150	80,509,311
1994	12	25,874	67,270,673	54,713,729	6,265,088	74,249,709
1995	12	26,745	67,854,490	56,622,195	7,269,489	75,415,957
1996	12	28,023	72,374,773	60,462,186	8,417,543	81,040,231
1997	11	28,950	75,468,973	63,528,988	9,344,543	85,108,347
1998	12	29,976	84,754,677	66,726,752	10,197,836	95,329,572
1999	11	30,827	88,527,482	69,027,581	10,402,769	99,536,155
2000	11	31,782	88,919,981	74,802,907	11,567,476	100,877,286
2001	9	28,631	70,011,115	48,476,819	7,825,115	78,310,047
2002	9	29,547	82,768,179	56,202,264	8,702,316	91,874,595
2003	8	29,929	91,267,096	63,867,935	9,593,016	101,336,721
2004	8	30,103	95,423,803	67,148,016	10,674,369	106,619,761
2005	6	29,319	86,177,170	68,682,658	10,208,914	98,530,534
2006	6	29,771	90,253,946	70,017,902	10,889,063	102,437,153
2007	5	28,960	90,852,057	69,865,129	11,327,934	102,539,605
2008	5	29,571	101,055,990	73,688,831	12,497,202	114,096,833
2009	5	29,767	120,981,725	78,777,289	13,547,024	139,039,847
2010	5	30,122	133,933,171	84,066,843	14,585,020	149,047,425
2011	4	29,478	135,683,438	84,563,947	14,070,898	150,430,876
2012	4	27,392	153,571,729	97,032,397	15,921,223	170,026,149
2013	4	26,983	165,580,724	110,083,256	17,398,982	183,651,441
2014	4	26,562	177,659,987	127,689,639	20,010,397	198,158,098
2015	4	26,509	193,046,922	136,149,823	22,211,354	215,749,603
2016	4	26,239	202,703,369	147,404,244	24,454,090	227,962,238

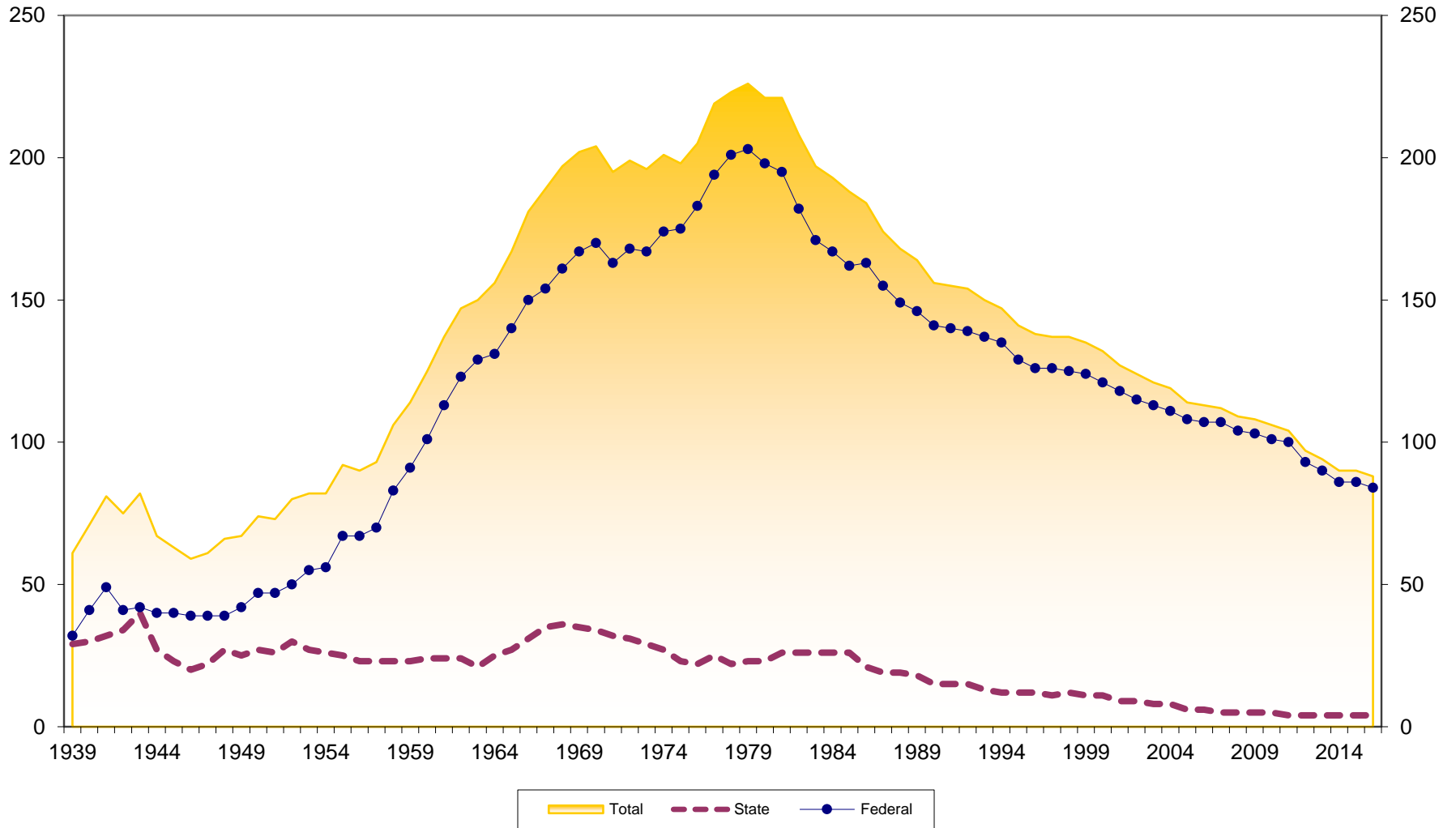
* Beginning 1990, Reserves includes undivided earnings.

West Virginia Federal Statistics

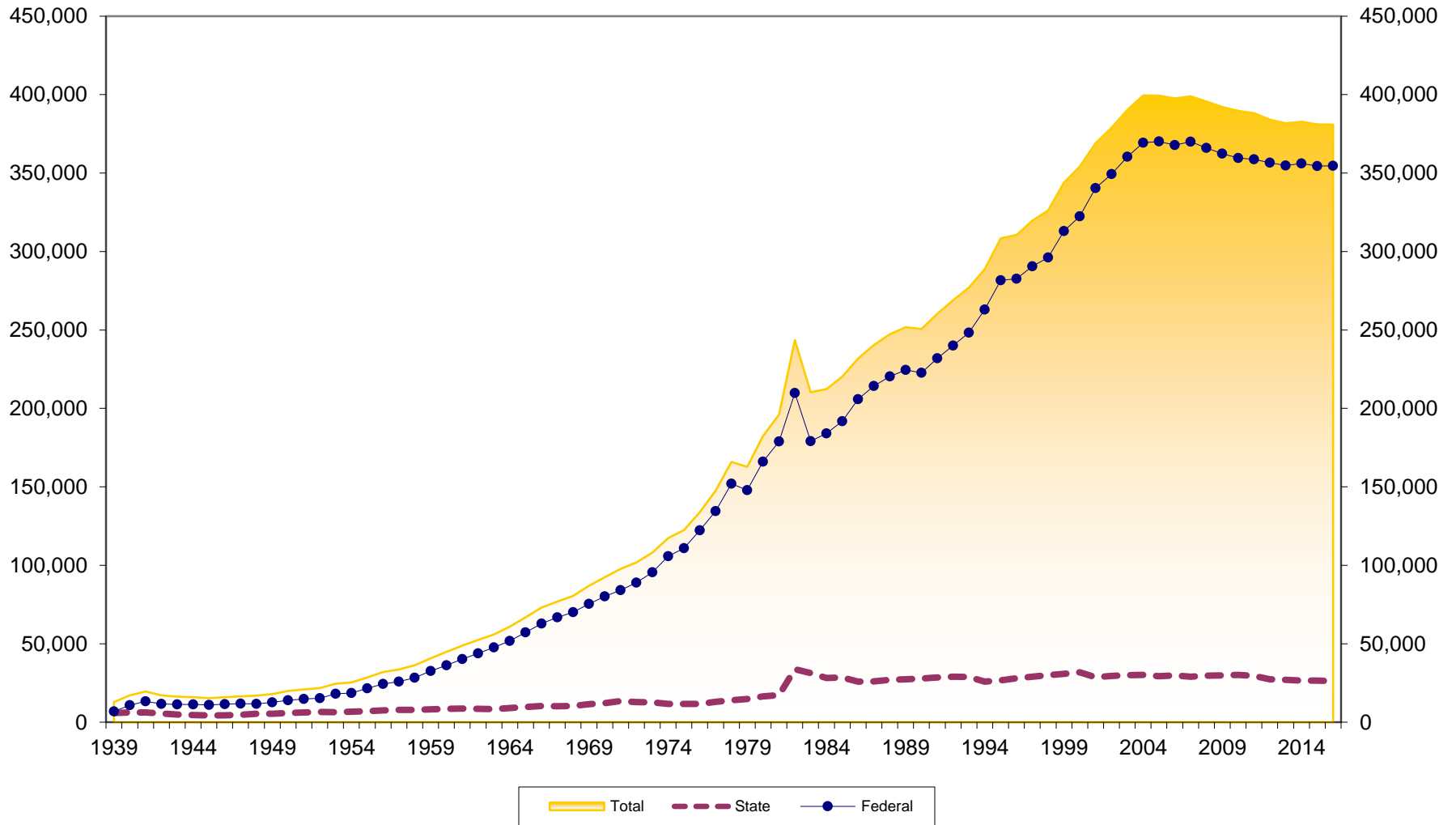
Year	# of CUs	# of Memberships	Savings (\$)	Loans (\$)	Reserves (\$)*	Assets (\$)
1939	32	6,840	195,214	174,173	7,175	216,543
1940	41	10,765	380,000	345,000		422,000
1941	49	13,307	611,448	459,000		667,000
1942	41	11,685	650,648	282,253	26,238	714,458
1943	42	11,343	649,977	222,000		725,000
1944	40	11,278	755,880	212,050	31,032	816,675
1945	40	11,010	919,554	232,396	32,105	990,148
1946	39	11,498	1,084,209	408,043		1,165,702
1947	39	11,751	1,293,808	619,777	40,182	1,395,461
1948	39	11,685	1,535,807	874,862	53,383	1,677,440
1949	42	12,571	1,758,204	1,161,318	66,000	1,937,184
1950	47	14,035	2,020,199	1,621,450	86,507	2,269,364
1951	47	14,729	2,352,111	1,675,250	115,220	2,638,404
1952	50	15,195	2,838,265	2,090,553	128,418	3,184,902
1953	55	18,119	3,508,581	2,800,495	167,325	3,979,298
1954	56	18,556	4,045,460	3,003,803	196,810	4,548,143
1955	67	21,485	5,032,534	3,958,014	228,538	5,681,981
1956	67	24,389	6,192,797	4,964,535	312,006	6,966,387
1957	70	25,891	7,421,231	6,081,130	377,694	8,378,888
1958	83	28,305	8,514,975	6,597,891	481,598	9,622,860
1959	91	32,592	10,610,320	8,333,442	606,285	11,995,350
1960	101	36,262	12,481,139	10,460,467	788,720	14,263,473
1961	113	40,259	14,534,951	12,530,665	998,894	16,715,046
1962	123	43,918	16,321,986	14,157,537	1,211,148	18,977,506
1963	129	47,572	18,737,935	17,010,336	1,934,248	22,447,914
1964	131	51,850	23,259,000	20,159,000	1,812,000	26,975,000
1965	140	57,224	27,593,000	24,241,000	2,129,000	31,889,000
1966	150	62,753	31,848,000	28,558,000	2,547,000	37,024,000
1967	154	66,813	35,753,000	31,085,000	2,995,000	41,612,000
1968	161	70,180	40,712,000	36,008,000	3,445,000	47,096,000
1969	167	75,419	45,633,000	43,284,000	4,001,000	53,256,000
1970	170	80,246	51,411,000	48,216,000	4,598,000	59,727,000
1971	163	84,218	60,883,000	54,870,000	5,073,000	70,199,000
1972	168	88,970	71,623,000	63,272,000	5,518,000	81,991,000
1973	167	95,483	82,235,000	74,953,000	6,229,000	94,318,000
1974	174	105,708	99,746,000	88,141,000	7,625,000	114,291,000
1975	175	110,882	116,304,000	100,823,000	8,649,000	133,143,000
1976	183	122,263	136,860,000	126,780,000	9,883,000	158,520,000
1977	194	134,566	162,376,000	154,236,000	10,723,000	186,551,000
1978	201	151,950	190,300,000	185,138,000	11,673,000	218,100,000
1979	203	147,914	200,384,000	192,615,000	13,287,000	231,928,000
1980	198	165,980	223,552,000	177,884,000	14,770,000	250,022,000
1981	195	178,921	234,981,000	193,481,000	17,153,000	276,850,000
1982	182	209,737	282,049,000	185,359,000	18,150,000	313,852,000
1983	171	179,011	323,800,000	200,400,000	18,390,000	357,200,000
1984	167	184,077	354,060,342	252,136,503	21,405,469	393,469,385
1985	162	191,748	422,345,685	279,266,736	24,727,331	466,887,799
1986	163	205,878	561,858,516	322,871,567	27,616,386	612,830,447
1987	155	214,311	606,050,645	369,808,635	30,068,440	662,889,715
1988	149	220,382	642,111,336	427,040,840	38,670,660	705,714,279
1989	146	224,504	666,271,028	459,671,147	37,931,004	737,390,380
1990	141	222,767	718,850,238	469,240,331	69,498,635	797,461,674
1991	140	231,863	799,926,896	480,697,135	76,978,633	885,238,182
1992	139	240,047	930,303,853	534,224,748	86,667,240	1,024,401,397
1993	137	248,276	997,316,932	601,300,105	100,134,774	1,105,417,349
1994	135	262,905	1,033,361,147	715,865,794	112,728,297	1,165,912,012
1995	129	281,655	1,068,146,676	772,136,271	128,153,124	1,207,697,708
1996	126	282,571	1,120,781,392	856,761,585	143,306,210	1,276,614,103
1997	126	290,599	1,156,785,651	900,246,509	158,458,906	1,326,413,452
1998	125	296,228	1,237,095,018	926,214,054	172,950,882	1,420,307,413
1999	124	313,077	1,304,859,469	997,817,056	190,953,738	1,507,881,107
2000	121	322,364	1,334,295,870	1,069,842,314	205,351,730	1,564,187,408
2001	118	340,375	1,528,703,978	1,120,123,285	223,621,323	1,774,487,075
2002	115	349,394	1,655,463,664	1,197,327,048	240,643,965	1,924,411,478
2003	113	360,377	1,758,550,682	1,256,294,103	255,967,092	2,041,658,022
2004	111	369,387	1,786,509,739	1,314,456,412	262,973,870	2,088,564,429
2005	108	370,121	1,772,856,884	1,328,688,088	275,003,723	2,086,888,625
2006	107	367,793	1,790,327,295	1,337,334,373	284,782,606	2,111,167,022
2007	107	369,966	1,856,298,376	1,364,655,175	300,246,164	2,192,330,329
2008	104	366,032	1,928,867,575	1,403,288,993	312,442,136	2,277,343,258
2009	103	362,353	2,141,744,941	1,456,228,136	316,953,687	2,524,098,882
2010	101	359,527	2,274,778,057	1,435,273,697	325,640,965	2,621,632,752
2011	100	358,688	2,459,991,212	1,477,419,195	337,013,531	2,816,720,718
2012	93	356,629	2,594,267,425	1,558,767,003	347,485,572	2,960,347,760
2013	90	354,794	2,641,771,985	1,659,001,302	359,601,724	3,030,519,926
2014	86	356,176	2,719,949,389	1,743,667,767	373,213,062	3,135,205,044
2015	86	354,493	2,780,128,311	1,824,968,395	385,360,311	3,221,610,535
2016	84	354,610	2,830,036,757	1,894,079,129	395,780,274	3,277,277,015

* Beginning 1990, Reserves includes undivided earnings.

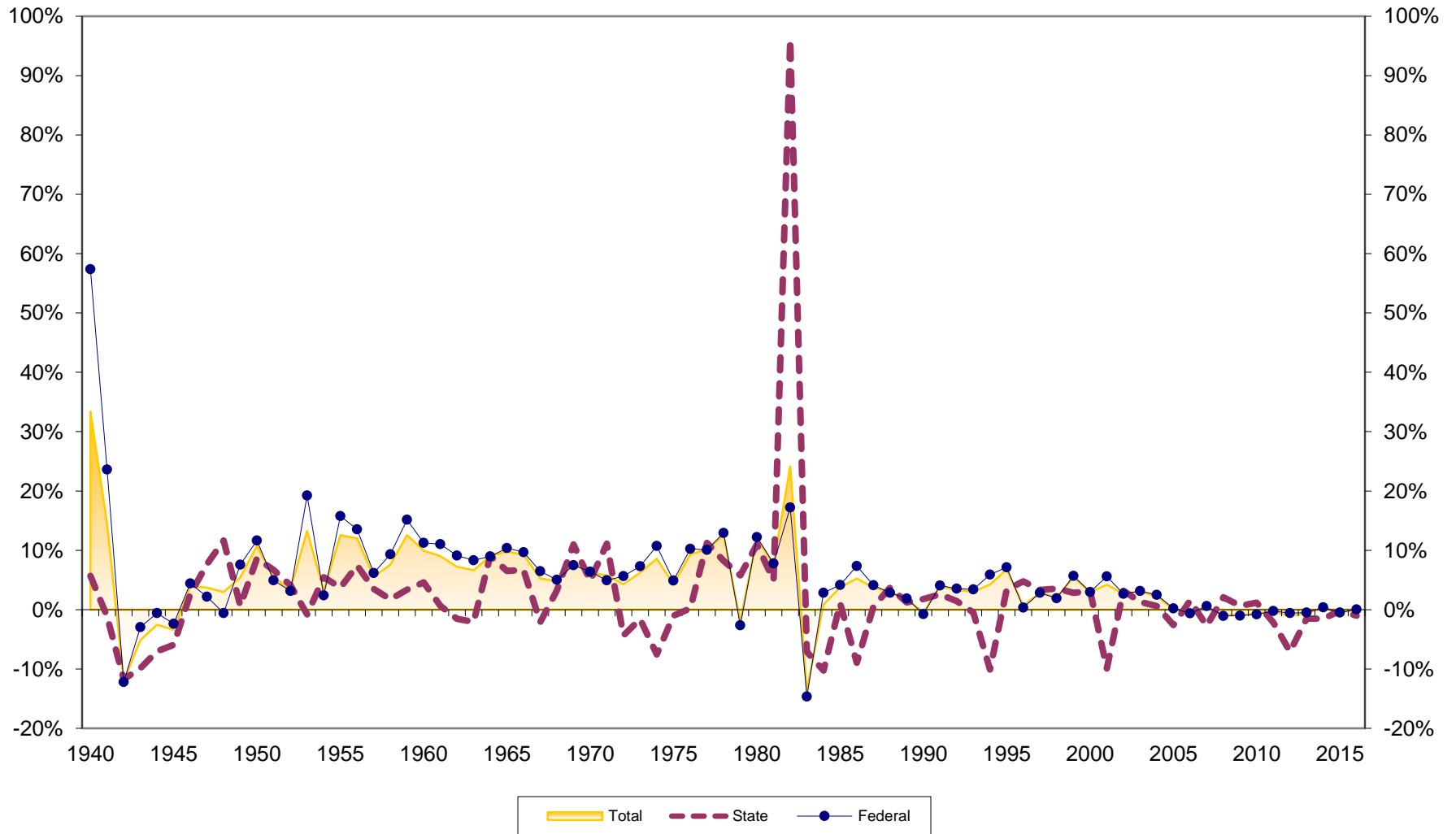
Number of West Virginia Credit Unions 1939-2016



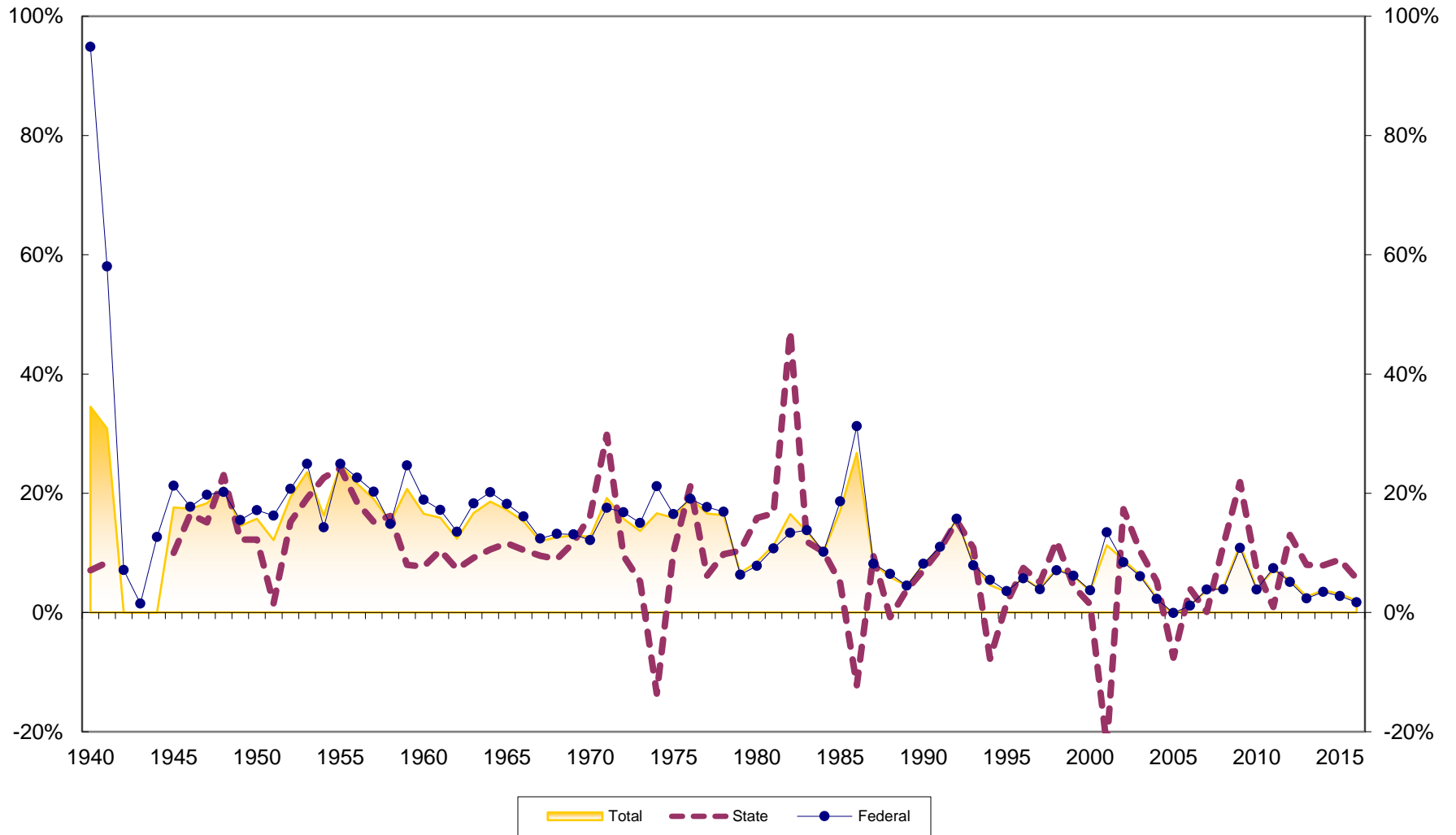
Number of Memberships at West Virginia Credit Unions 1939-2016



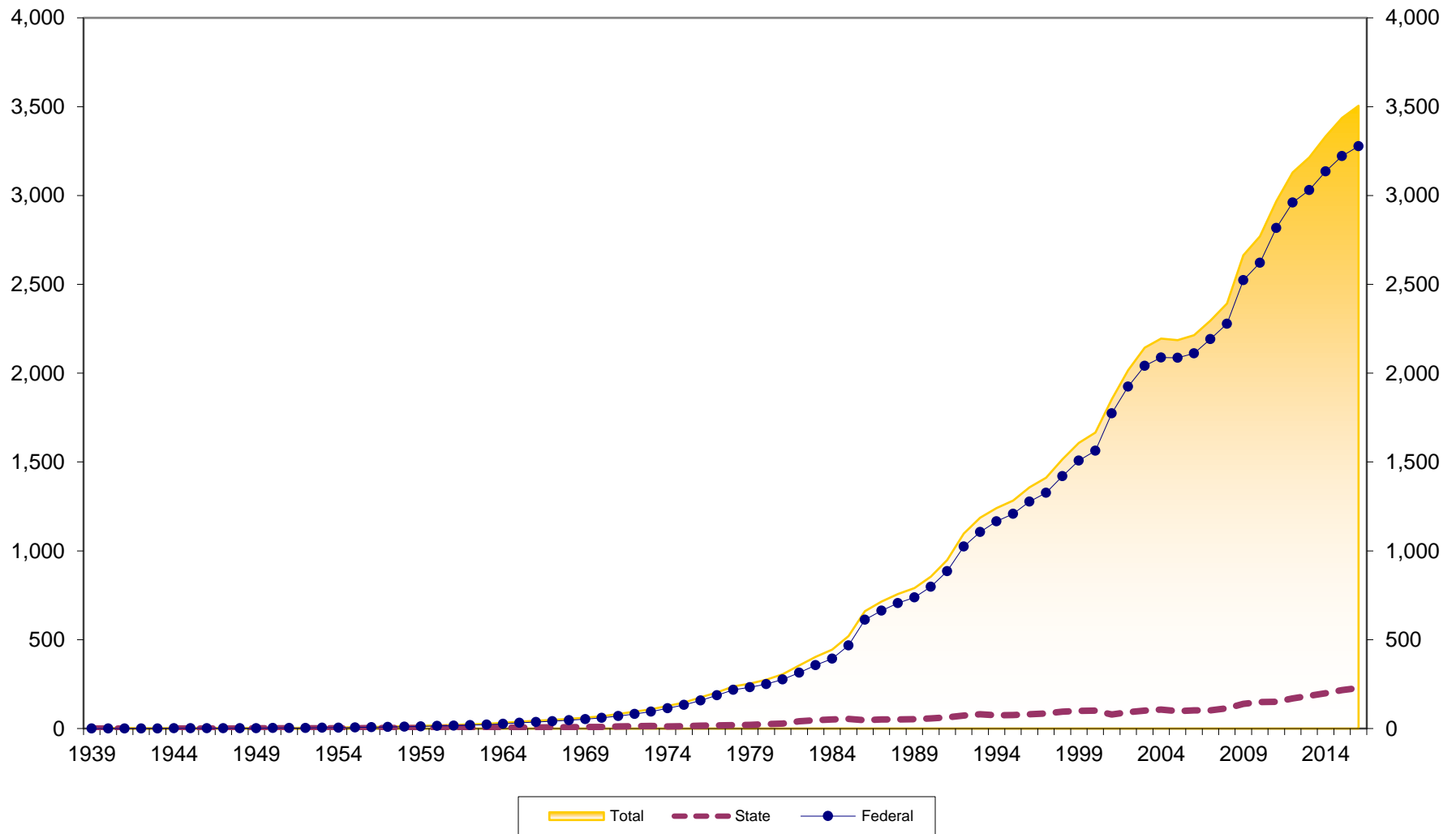
Membership Growth at West Virginia Credit Unions 1940-2016



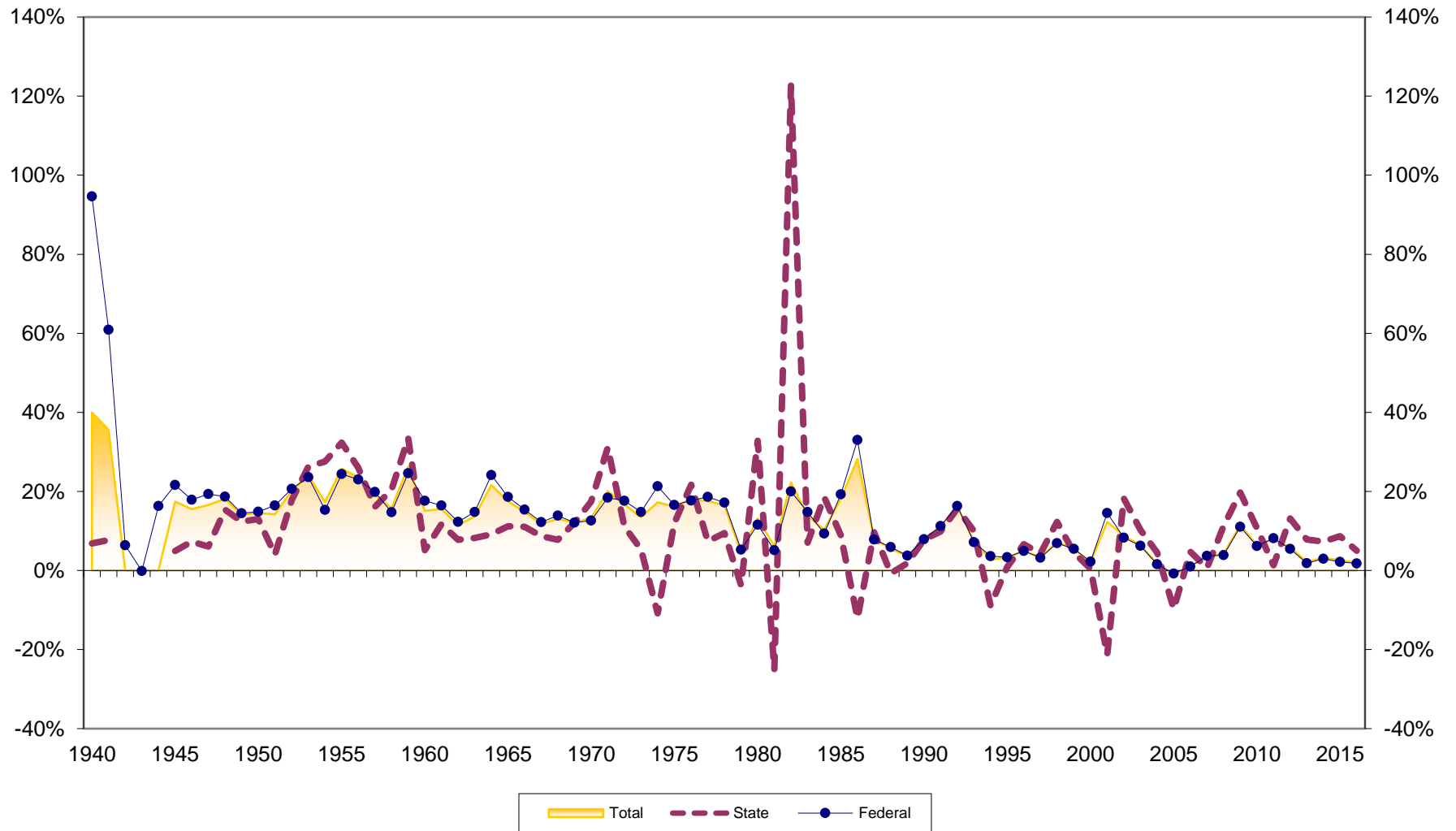
Asset Growth at West Virginia Credit Unions 1940-2016



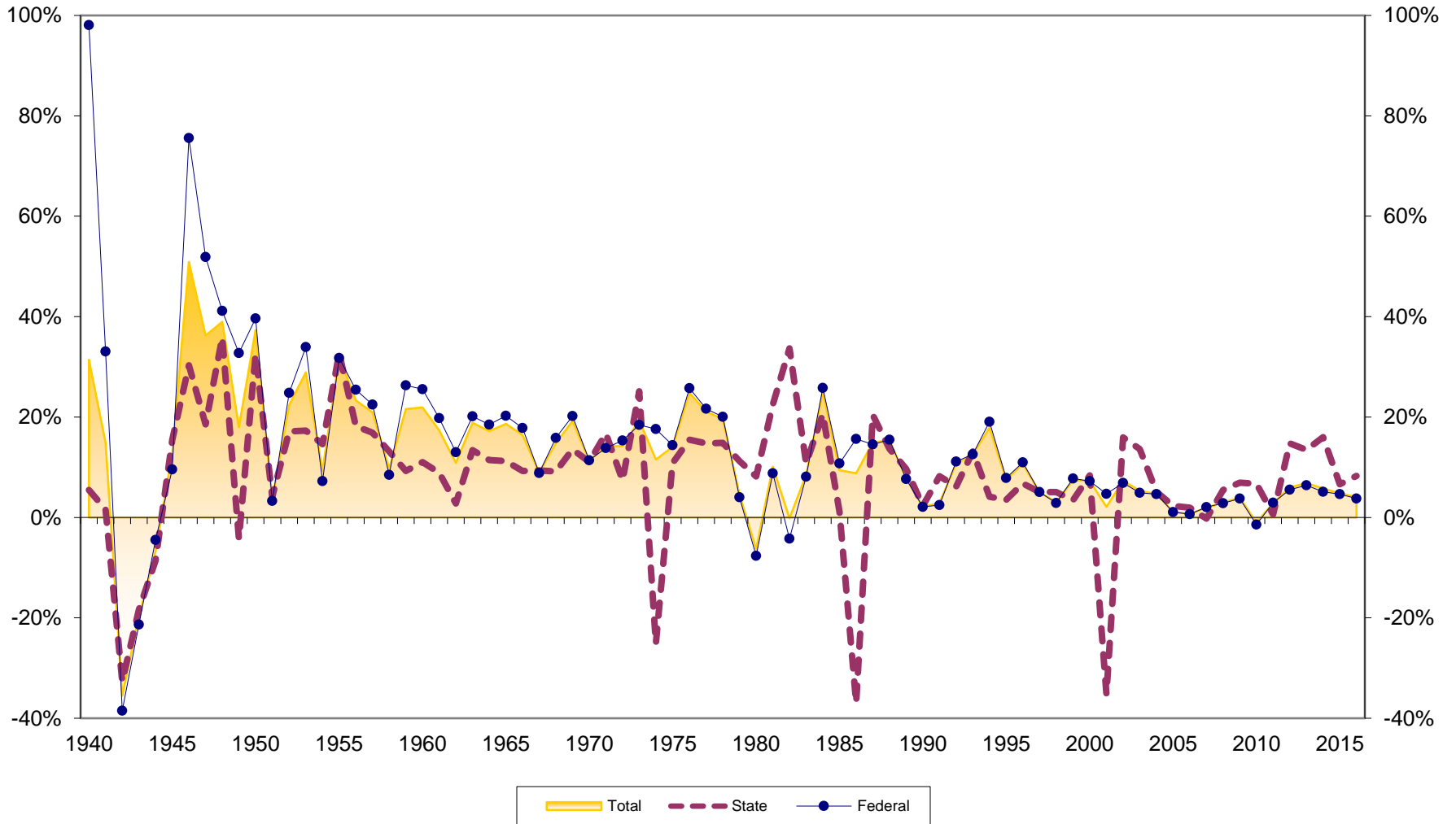
Assets at West Virginia Credit Unions (in \$Millions) 1939-2016



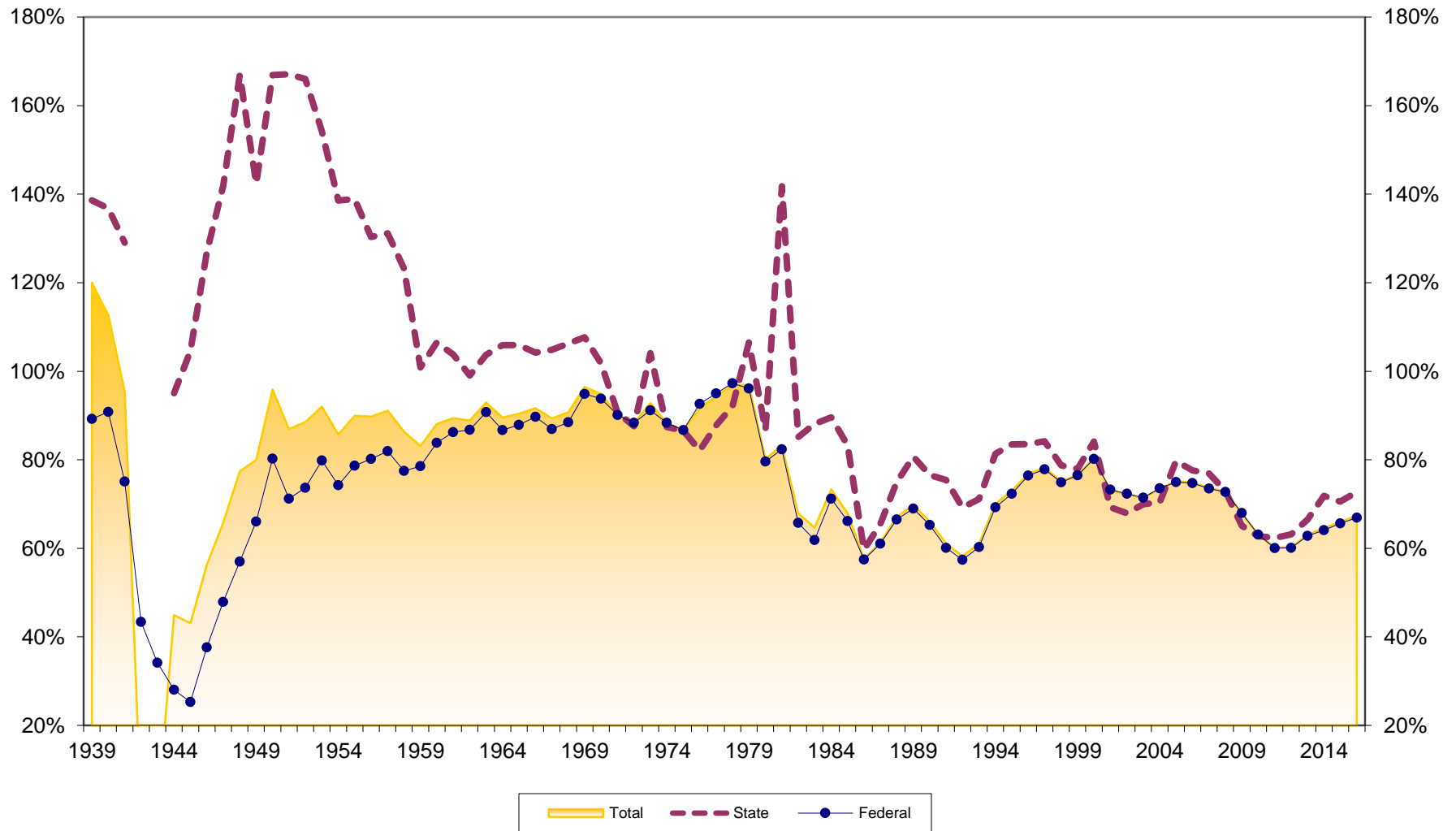
Savings Growth at West Virginia Credit Unions 1940-2016



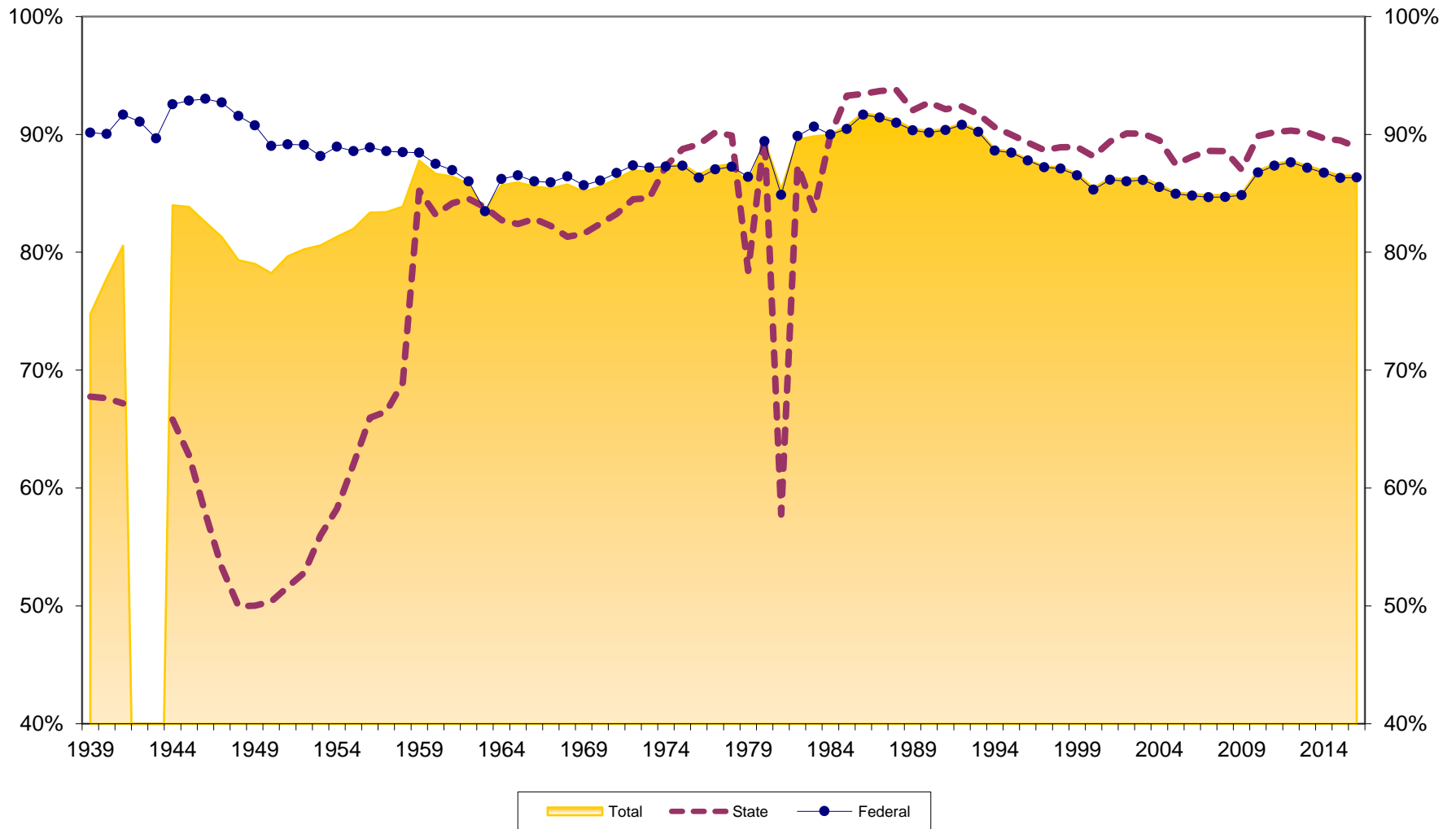
Loan Growth at West Virginia Credit Unions 1940-2016



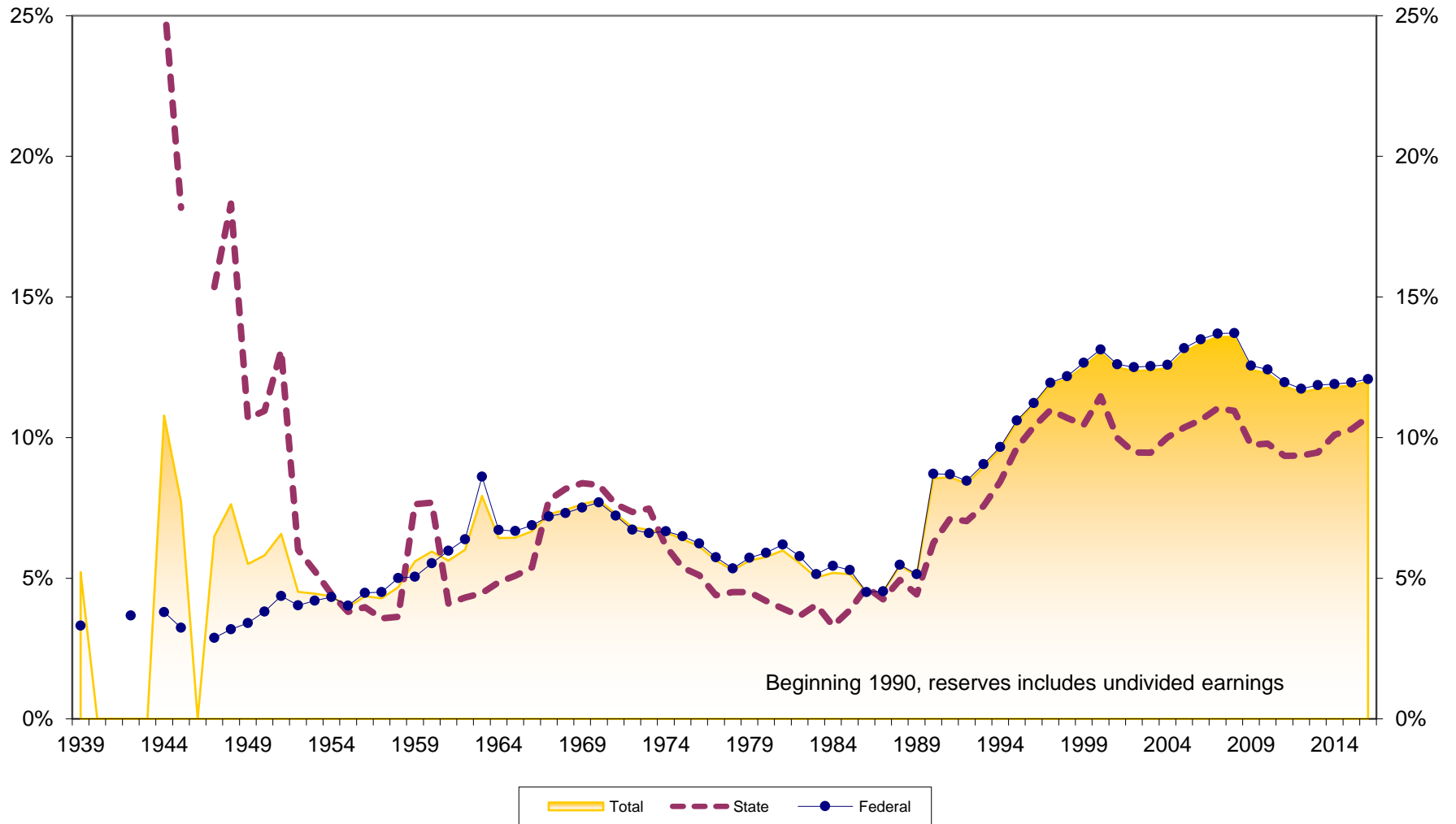
Loans to Savings Ratio at West Virginia Credit Unions 1939-2016



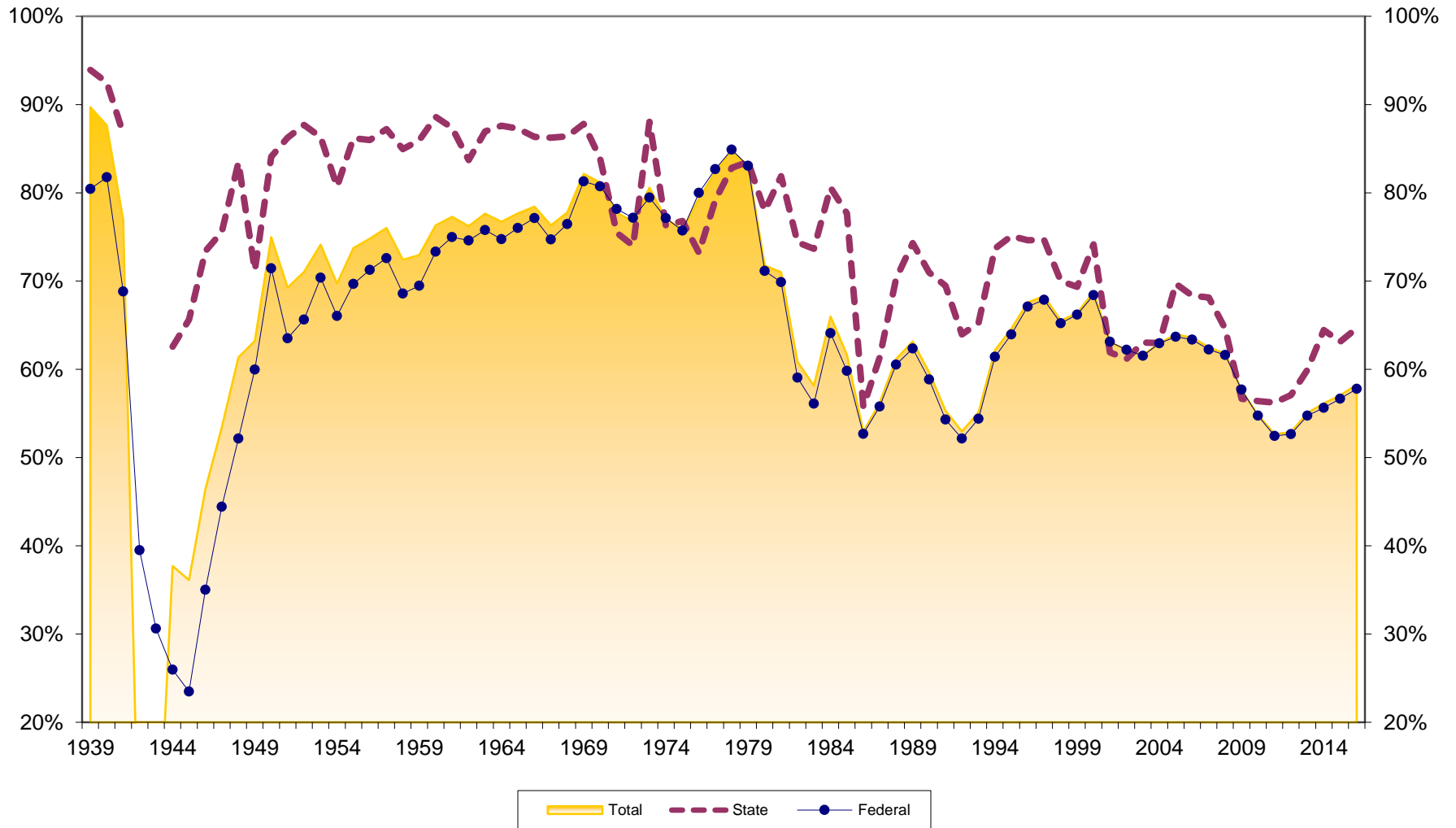
Savings to Assets at West Virginia Credit Unions 1939-2016



Reserves to Assets at West Virginia Credit Unions 1939-2016



Loans to Assets at West Virginia Credit Unions 1939-2016



Dollar Asset Growth at West Virginia Credit Unions (in \$Millions) 1940-2016

