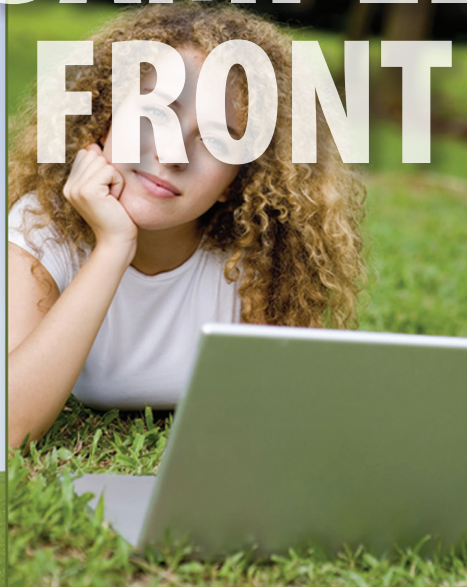


Make the Switch to Paperless

It feels good to go green. Plus it can give you a little more green of your own. When you help your credit union reduce expenses, it comes right back to you in better rates and lower fees.

GENERIC
SAMPLE
FRONT



Thank you for using the
credit union.

Go Paperless—

Switching is simple—take it one step at a time.

- 1) Enroll in online access—giving you control anywhere with Internet.
- 2) Request direct deposit—for paychecks, payments, and any investment dividends.
- 3) Switch to e-statements—for all your financial accounts and bills.
- 4) Set up automatic transfers to other accounts—retirement fund, college fund, holiday account, and vacation account.
- 5) Set up automatic payments—car payments, rent or mortgage, utilities, and phone.
- 6) Pay bills online—credit cards, subscriptions, medical, and taxes.

YOUR
CU LOGO
HERE

www.yourcreditunion.org • 123-456-0000



© Credit Union National Association Inc.

Your custom message on the flap for any of the drive-up envelopes. The yellow area indicates the 2.5" wide x .75" high imprint area for any of the drive-up envelopes.

The yellow area indicates the 2.5" wide x 1" high imprint area for any of the drive-up envelopes.